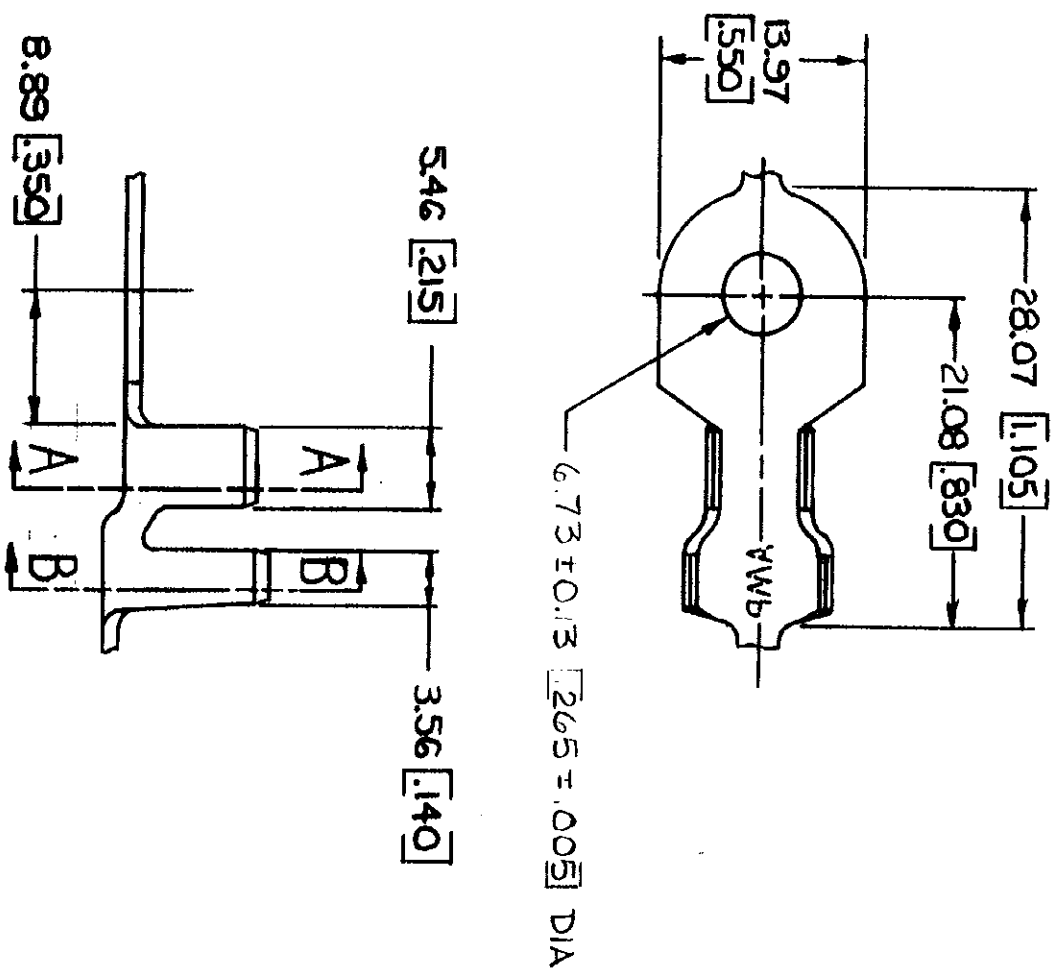
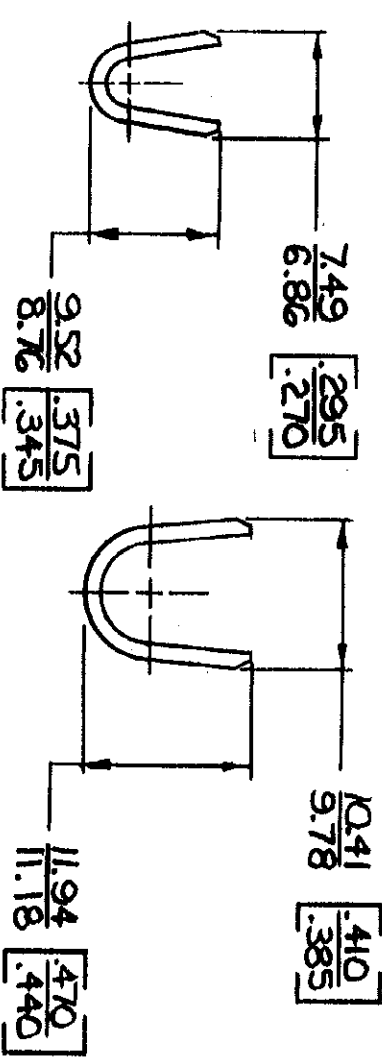


© COPYRIGHT 1964 BY AMP INCORPORATED, HARRISBURG, PA.
 ALL INTERNATIONAL RIGHTS RESERVED. AMP INCORPORATED PRODUCTS
 COVERED BY U. S. AND FOREIGN PATENTS AND/OR PATENTS PENDING.



1. CONTINUOUS STRIP ON REELS.
 2. DIMENSIONS IN BRACKETS ARE IN INCHES.

REVISIONS		DATE	APPROVED
P	ZONE		
F	LTR		
J	REDRAWN & REVISED	A-3943	4/22/78 DC 55



MATERIAL	SEE TABLE	CONTRACT NO.		NAME	AMP INCORPORATED Harrisburg, Pa.
STUD SIZE	M ₆ 4	INSULATION RANGE	5.59 - 8.00 [.220 - .315]	FINISH	TIN
WIRE RANGE			5.0 - 8.5 mm ² [10 - 8]	MATERIAL	1.27 [0.050] COPPER
FINISH	SEE TABLE			PART NO.	41809
UNLESS OTHERWISE SPECIFIED DIMENSIONS ARE IN MILLIMETERS TOLERANCES ON DECIMALS ±0.38 [0.015] ANGLES 90°		DR David D. Wood 4/22/78		SIZE	B
		CHK J. J. P. 7/19/78		CODE IDENT NO.	00779
		APPD P. F. 8-1-78		DRAWING NO.	41809
		APPD G. Kelly 8-1-78		SCALE	1:1
				SHEET	

METRIC

CUSTOMER DRAWING

单击下面可查看定价，库存，交付和生命周期等信息

[>>TE Connectivity\(泰科\)](#)