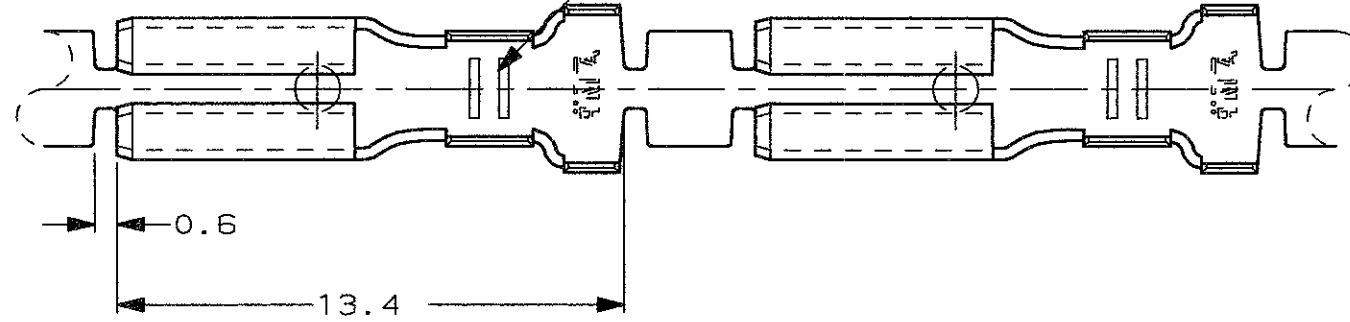


SCALA NON IMPEGNATIVA  
(DO NOT SCALE)  
DIMENSIONI IN mm  
(DIMENSIONS IN)

**METRIC**

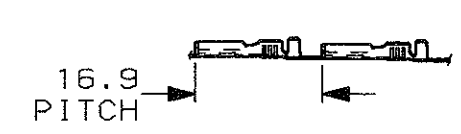
THIRD ANGLE  
PROJECTION

115-11-6, 2 SERRATIONS  
TOOLMARKS BESIDES SERRATIONS PERMISSIBLE.



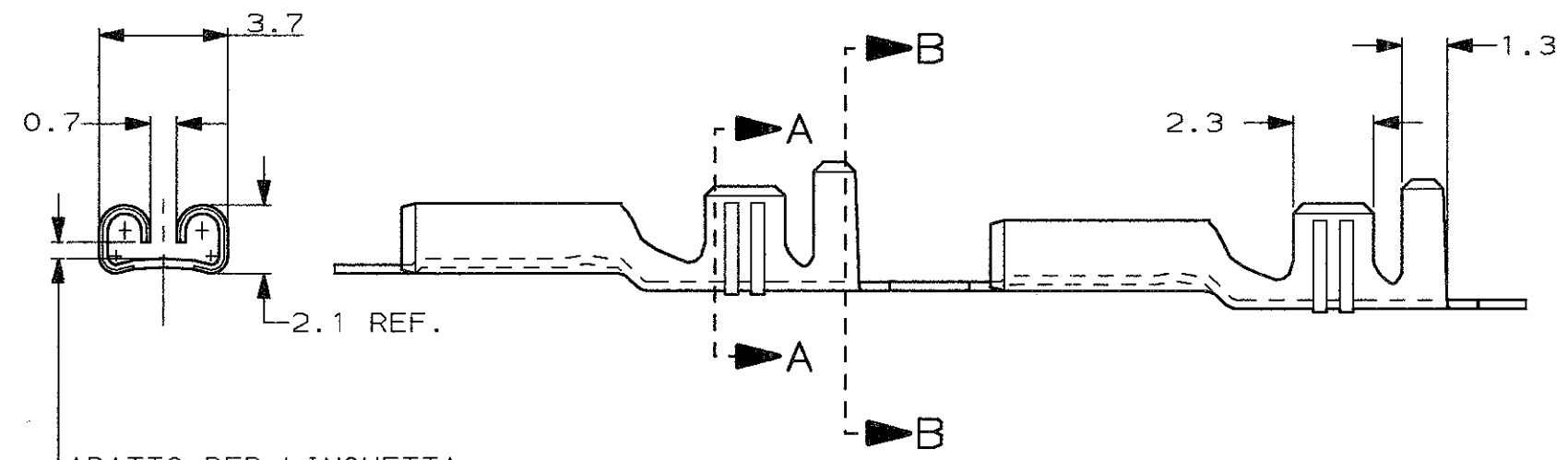
1) STATO DI FORNITURA - SCALA 1:1  
(SUPPLY CONDITION - SCALE 1:1)

SENSO DI USCITA  
DEL TERMINALE  
DALLA BOBINA  
(DIRECTION OFF  
TOP OF REEL)



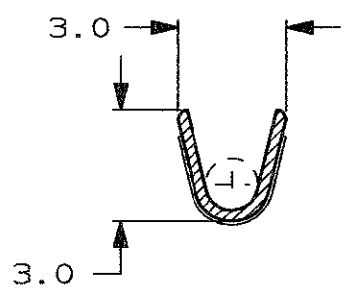
2) SPECIFICA DI PRODOTTO 108-20019  
(PRODUCT SPEC. 108-20019)

3) PER LE VERSIONI IN PEZZI SCIOLTI  
VEDERE DISEGNO 180441  
(FOR LOOSE PIECE VERSION SEE DRAWING 180441).

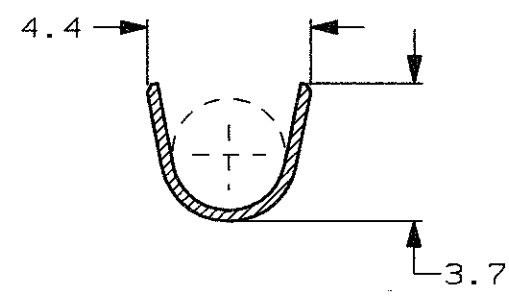


ADATTO PER LINGUETTA  
DI 0.5 mm.  
(TO FIT TAB 0.5 mm.)

**SEZIONE A-A**  
(SECTION A-A)



**SEZIONE B-B**  
(SECTION B-B)



	PRE-STAGNATO (PRE-TIN PLATED)	OTTONE (BRASS)	180437-2	AG
	NUDO (UNPLATED)	OTTONE (BRASS)	180437-1	AE
NOTE	FINITURA / COLORE (FINISH / COLOUR)	MATERIALE (MATERIAL)	NUMERO (CAMP P/N)	REV.

**CUSTOMER DWG. FOR REFERENCE ONLY**      **DISEGNO PER CLIENTE SOLO PER RIFERIMENTO**

THIS DRAWING IS UNPUBLISHED      RELEASE FOR PUBLICATION      19  
© COPYRIGHT 19 BY AMP INCORPORATED, HARRISBURG, PA. ALL INTERNATIONAL RIGHT RESERVED. AMP PRODUCTS MAY BE COVERED BY U.S. AND FOREIGN PATENT AND/OR PATENT PENDING

TOLLERANZE, SE NON DIVERSAMENTE SPECIFICATO (TOLERANCES, UNLESS OTHERWISE SPECIFIED)	DIAM. ISOLANTE (INS. DIA. RANGE)	RANGO FILO (WIRE RANGE) mm <sup>2</sup>	SCALA (SCALE)
± 0.4	1.5-2.8	0.5-1.5	5:1

ANGOLI (ANGLES) ± 2°

**AMP** AMP ITALIA S.p.A.  
Corso F.lli Cervi, 15  
COLLEGNO (TORINO)

DIS. H. YAALI (DR.) 18 DEC 2000

DESCRIZIONE (DESCRIPTION) FASTON® Connector  
.110" sr. REC. CONTACT

AG	REVISED ECR05-8370	AV	22 MAY 2006	CONT. C. TARTARI (CHK)
AE	REVISED & REDRAWN ET00-0004-01	H. Y.	08 JAN 01	APP. -
REV. (REV. LTR.)	REVISIONI (REVISION RECORD)	DIS. DATA (DR) (DATE)		
LOC. SIZE NUMERO (DWG NO)				REV. FOGLIO (SHEET)
I A3 C-180437				AG 1 DI (OF) 1

DISTRIBUZIONE (PRINT/DIST.)

单击下面可查看定价，库存，交付和生命周期等信息

[>>TE Connectivity\(泰科\)](#)