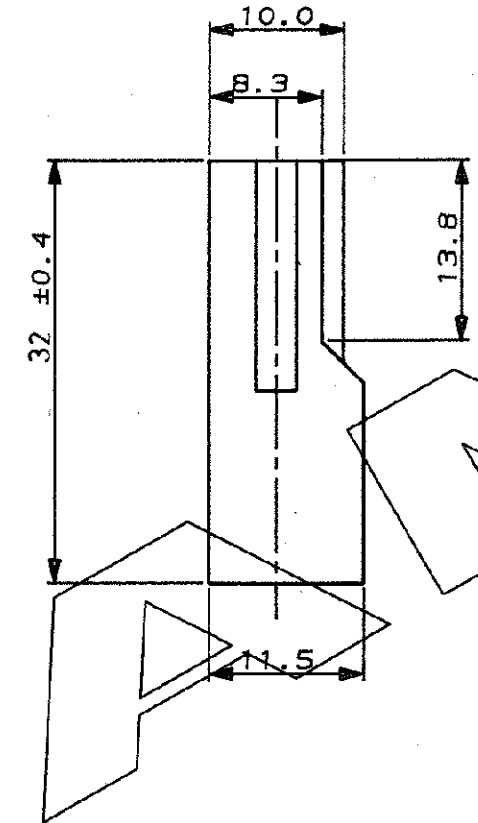
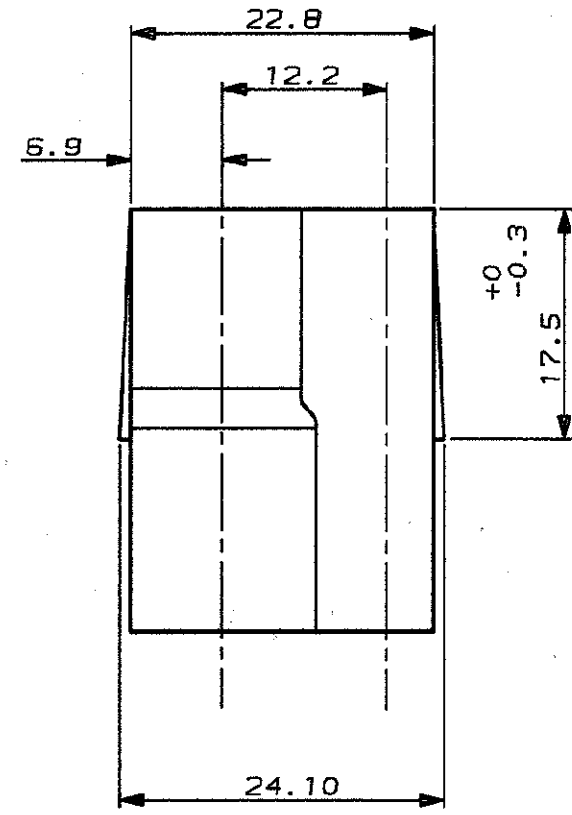


SCALA NON IMPEGNATIVA  
(DO NOT SCALE)  
DIMENSIONI IN mm  
(DIMENSIONS IN mm)

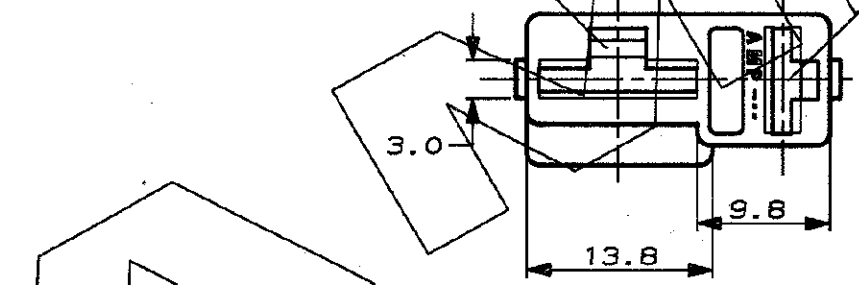
**METRIC**

PROIEZIONE EUROPEA  
(EUROPEAN PROJECTION)



CAVITY SUITABLE FOR  
.375 SRS.FASTIN-ON

CAVITY SUITABLE FOR  
.250 SRS.FASTIN-ON



1 OBSOLETE PARTS: OBSOLETE CIS STREAMLINING PER D.RENAUD/D.SINISI

OBSOLETE	BLACK	281993-3
	RED	281993-2
	CLEAR	281993-1
FINITURA / COLORE (FINISH / COLOUR)		NUMERO (PART NUMBER)
CUSTOMER DWG. FOR REFERENCE ONLY		DISEGNO PER CLIENTE SOLO PER RIFERIMENTO
THIS DRAWING IS UNPUBLISHED		RELEASE FOR PUBLICATION 19
© COPYRIGHT 19 BY AMP INCORPORATED, HARRISBURG, PA. ALL INTERNATIONAL RIGHTS RESERVED. AMP PRODUCTS MAY BE COVERED BY U.S. AND FOREIGN PATENT AND/OR PATENT PENDING		
TOLLERANZE, SE NON DIVERSAMENTE SPECIFICATO (TOLERANCES, UNLESS OTHERWISE SPECIFIED)	DIAM. ISOLANTE (INS. DIA. RANGE)	RANGO FILI (WIRE RANGE)
± 0.3	-	-
ANGOLI (ANGLES)	SCALA (SCALE)	
± 2°	2:1	
DIS. 15 JUNE 89 (DR.) VERGANO P.	AMP ITALIA S.p.A. Corso P.lli Cerri, 15 COLLEGGIO (TORINO)	
A1 REVISED PER ECO-09-026346	DESCRIZIONE (DESCRIPTION) 2 WAY FASTIN-ON REC.HOUSING (.250-.375 SRS.)	
A IN PRODUCTION	LOC. SIZE NUMERO (CDS NO)	REV. FOGLIO (SHEET)
	A3 C-281993	A1 1 DI COR 1

DISTRIBUZIONE  
(PRINT DIST.)

单击下面可查看定价，库存，交付和生命周期等信息

[>>TE Connectivity\(泰科\)](#)