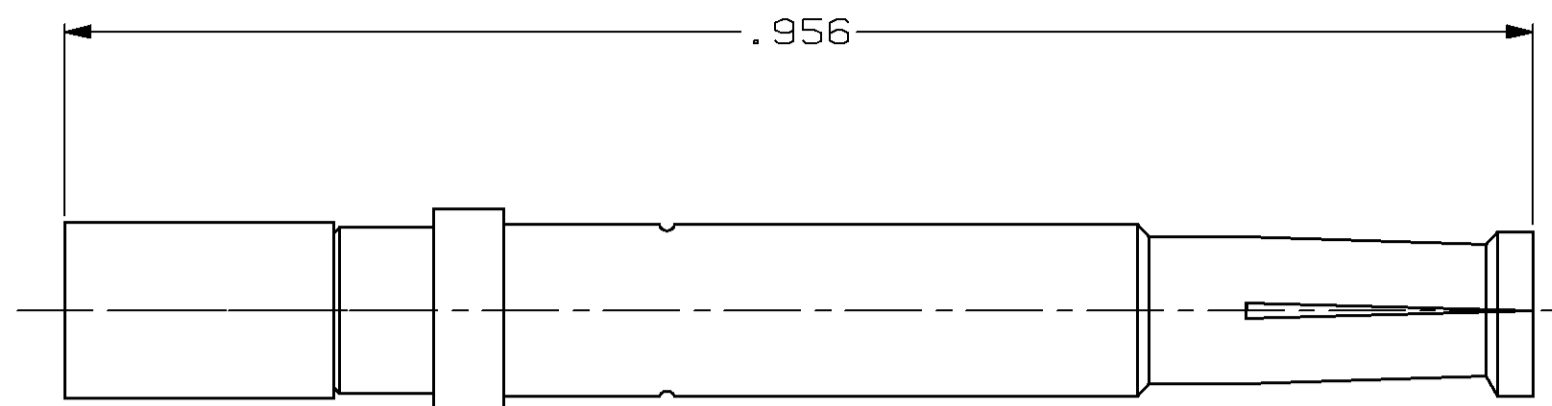
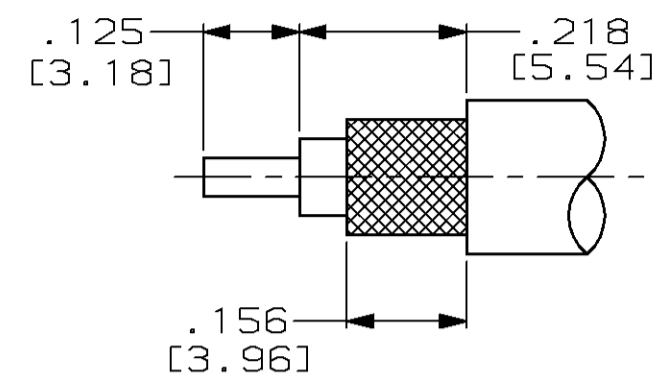


THIS DRAWING IS UNPUBLISHED. RELEASED FOR PUBLICATION
 © COPYRIGHT 19 BY AMP INCORPORATED. ALL RIGHTS RESERVED.

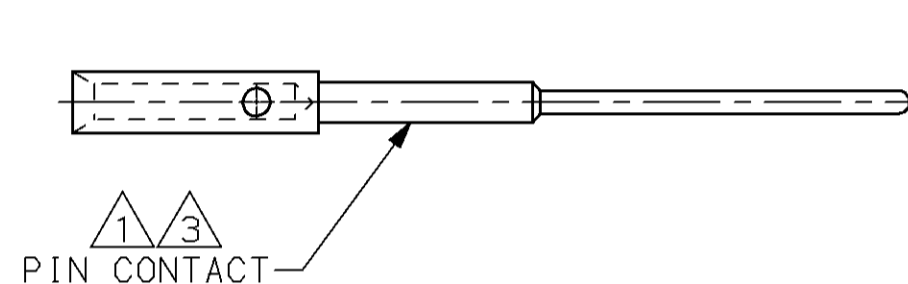
LOC		DIST		REVISIONS			
P	LTR	DESCRIPTION	DATE	DWN	APVD		
DF	AO	B	REV & REDRAWN; 0600-5680-96	3-97	CT	JW	



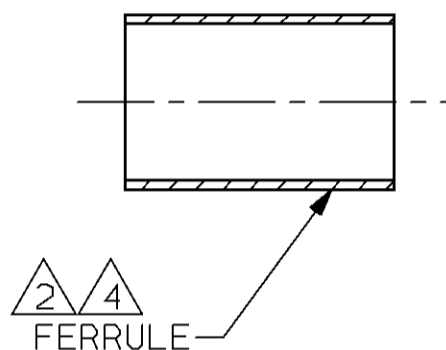
ASSEMBLED VIEW



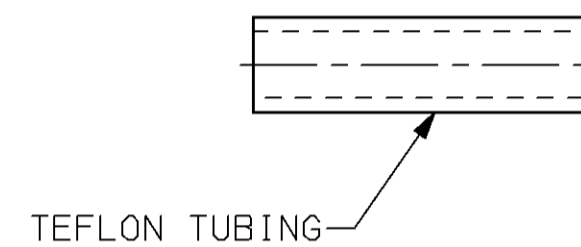
RECOMMENDED STRIP LENGTH SCALE: NTS



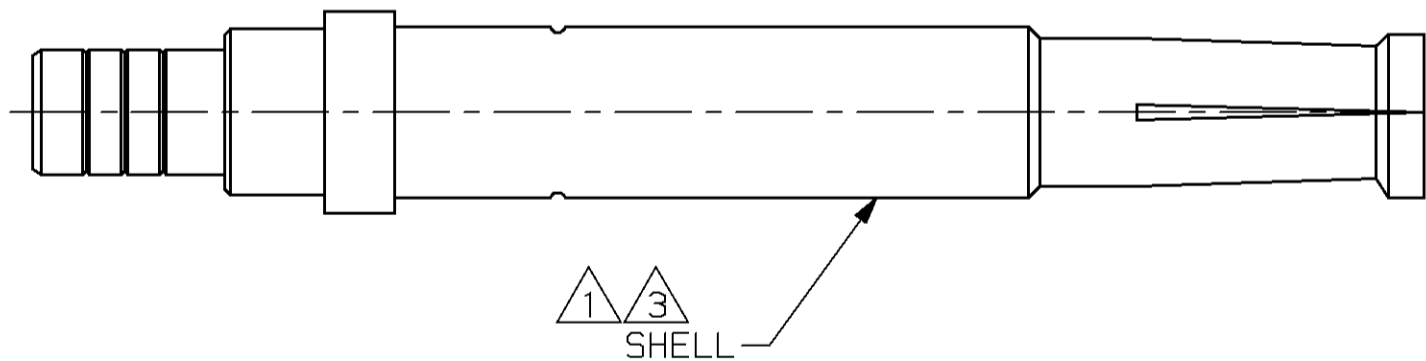
PIN CONTACT



FERRULE



TEFLON TUBING



SHELL

- 1 MAT'L: BERYLLIUM COPPER PER ASTM-B-196
- 2 MAT'L: COPPER PER ASTM-B-152
- 3 FINISH: GOLD PER MIL-G-45204 OVER NICKEL PER QQ-N-290.
- 4 FINISH: TIN-LEAD PLATE
- 5. FOR USE WITH RG-178/U AND 196/U CABLE.
- 6. FOR ASSEMBLY AND CRIMPING INSTRUCTIONS SEE I.S. 2348-4.

226781-3
 PART NO.

THIS DRAWING IS A CONTROLLED DOCUMENT.		DWN	C.C. THOMAS	3-4-97	AMP Incorporated Harrisburg, PA 17105-3608	
DIMENSIONS: INCHES [mm]		CHK	J. WEAVER	3-4-97		
TOLERANCES UNLESS OTHERWISE SPECIFIED:		APVD	J. WEAVER	3-4-97		
0 PLC ±- 1 PLC ±- 2 PLC ±- 3 PLC ±.015 [0.38] 4 PLC ±- ANGLES ±- FINISH -		NAME	CONNECTION, COAXIAL, RF ARINC, SIZE 15, SOCKET			
MATERIAL	-	PRODUCT SPEC	-		SIZE	A2
CUSTOMER DRAWING		APPLICATION SPEC	-		CAGE CODE	00779
		WEIGHT	-		DRAWING NO	C=226781-3
		SCALE	8:1		RESTRICTED TO	-
		SHEET	1 OF 1		REV	B

226781-3

单击下面可查看定价，库存，交付和生命周期等信息

[>>TE Connectivity\(泰科\)](#)