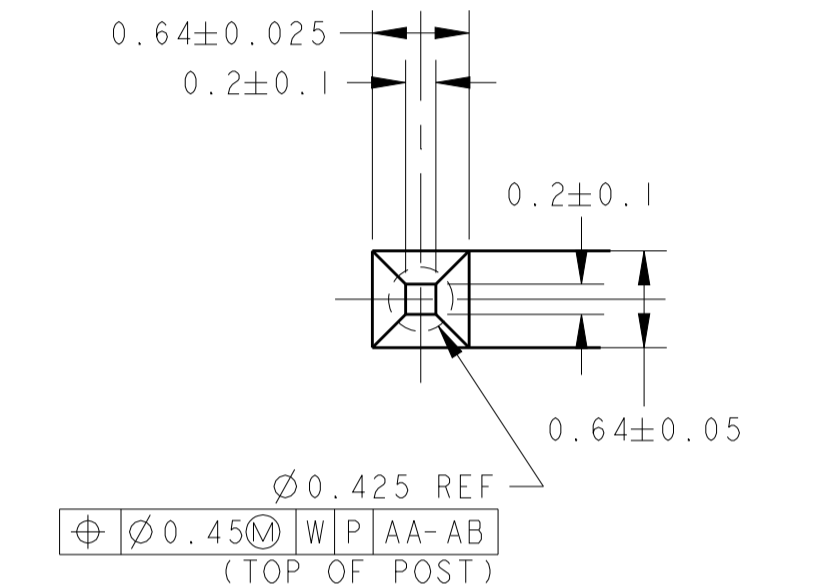
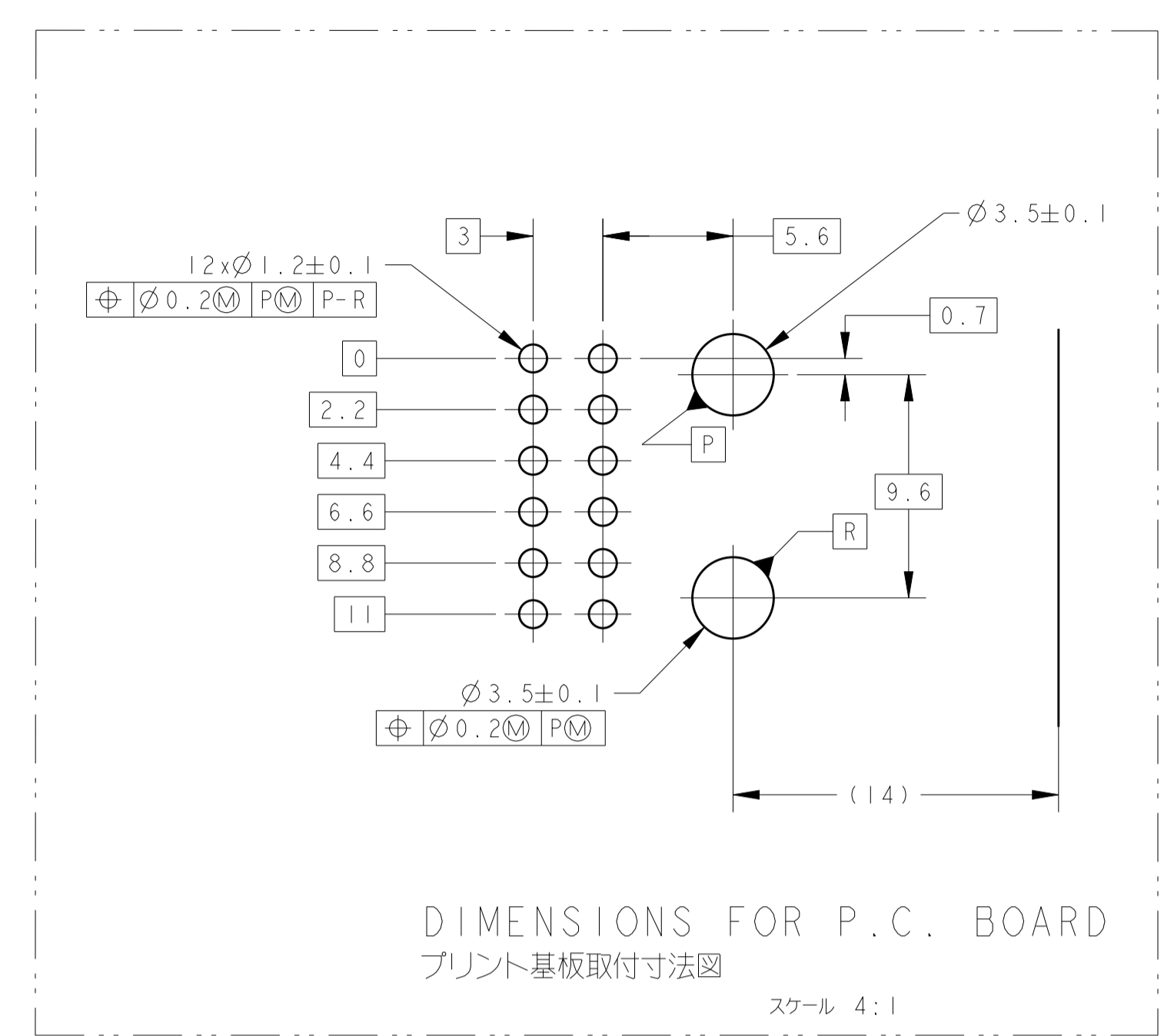
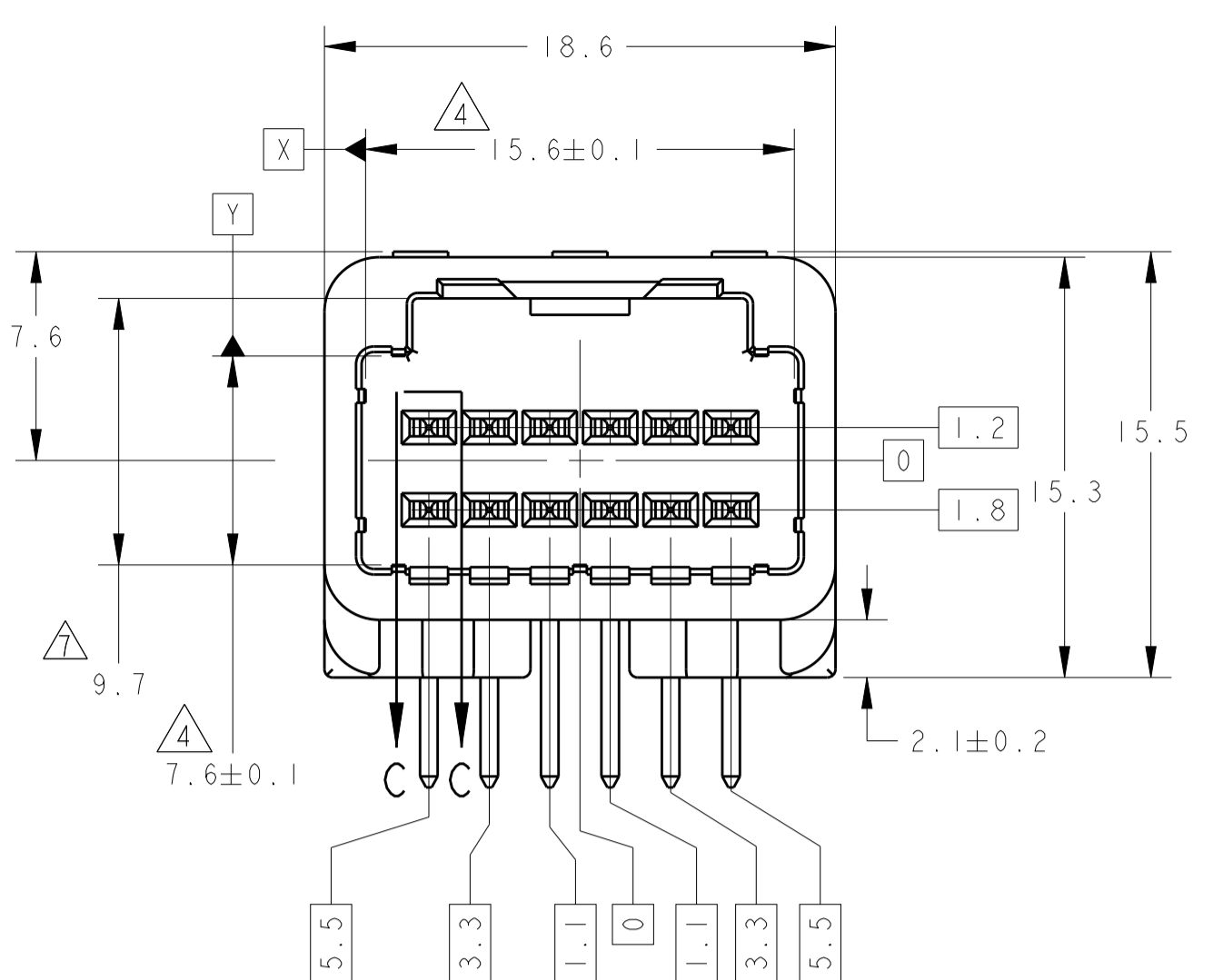
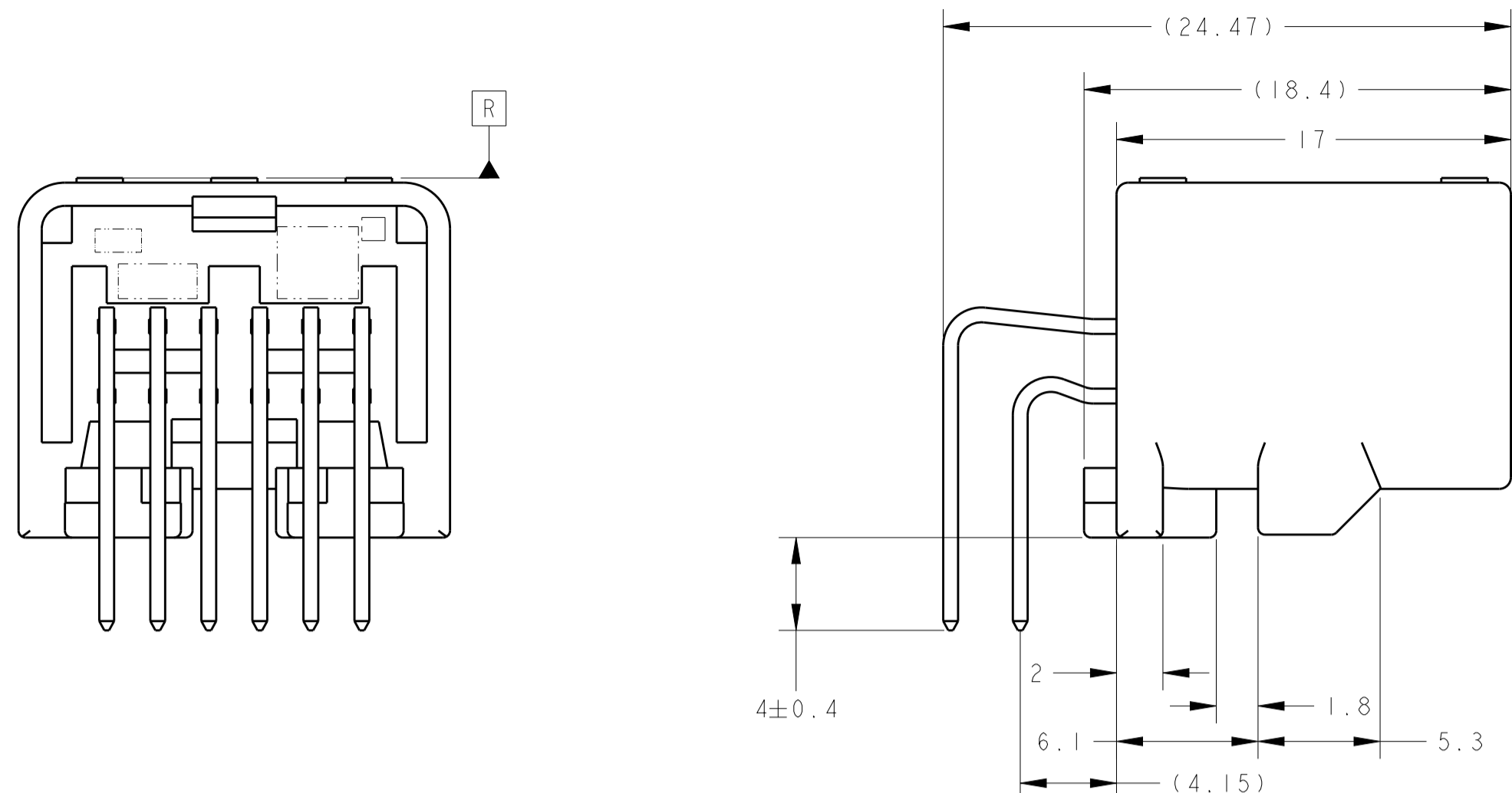
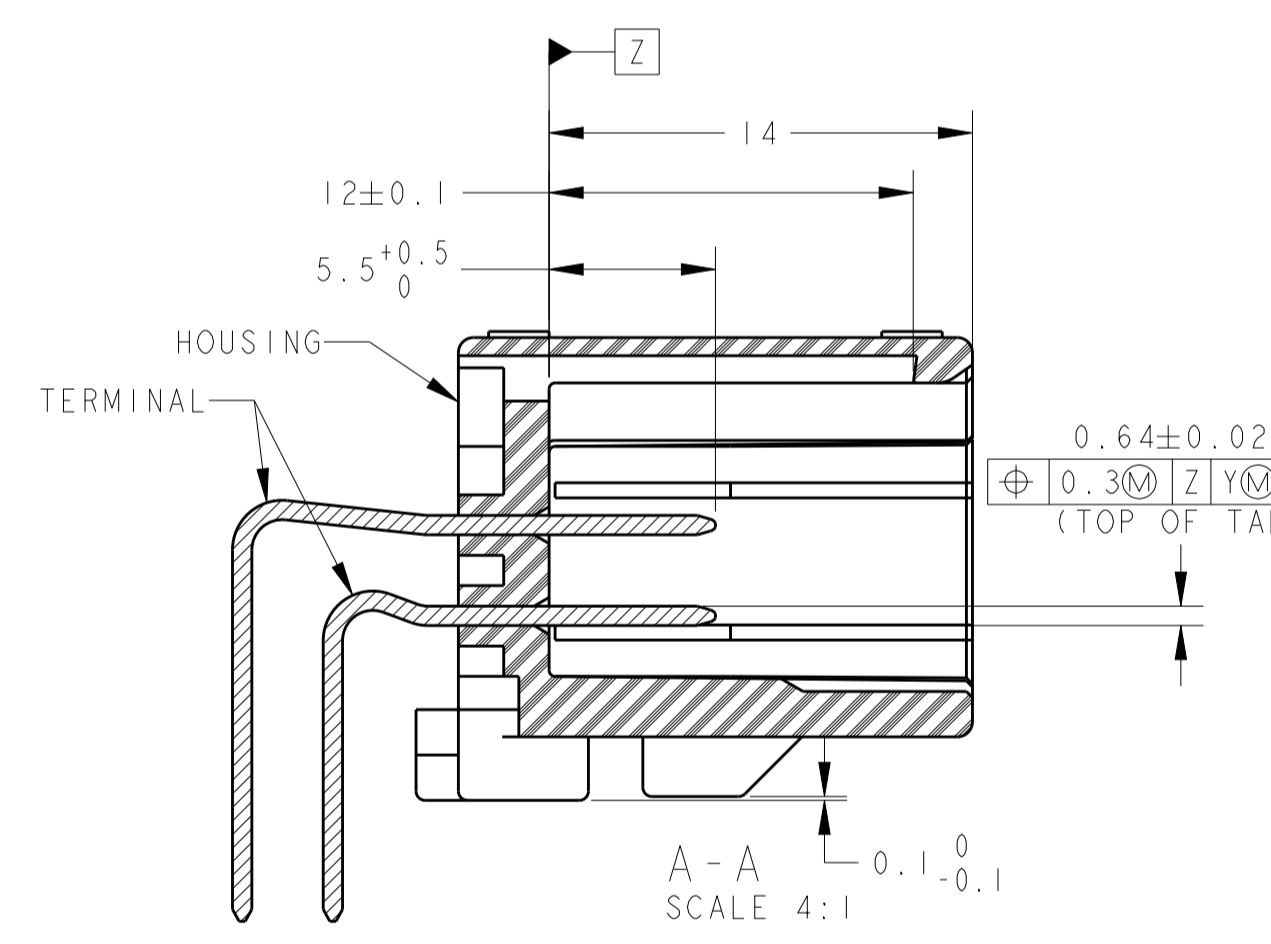
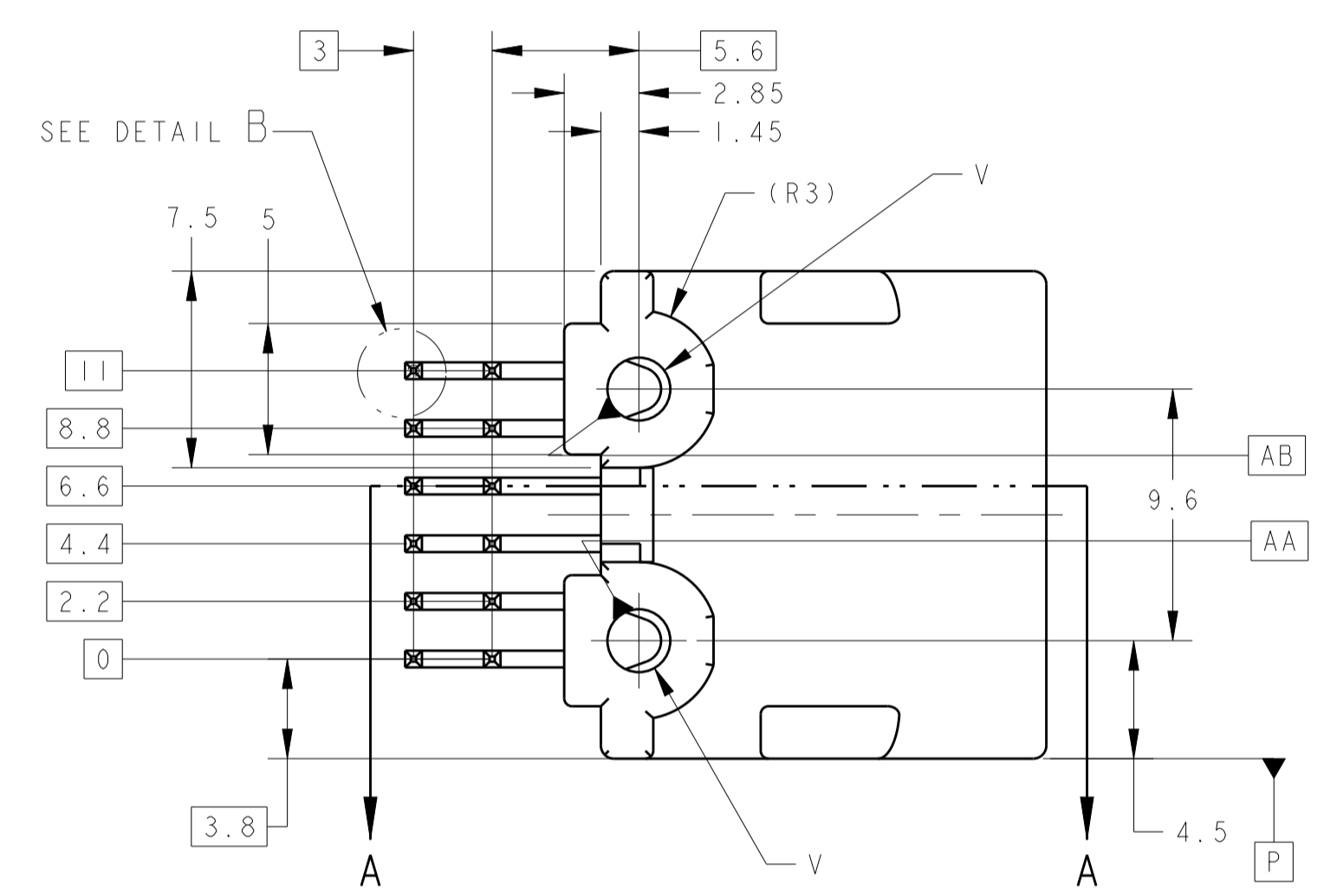


REVISONS					
REV.	DATE	DESCRIPTION	ECN	BY	CHK
H1	21APR11	REVISED PER ECO-11-005140		RK	HMR
H2	09APR15	REVISED	ECR-15-005364	KF	RK
H3	16MAR2017	REVISED	ECR-16-003439	KF	TK
H4	23OCT2017	REVISED	ECR-16-007071	DM	TK



DETAIL B SCALE 20:1



A-A SCALE 4:1

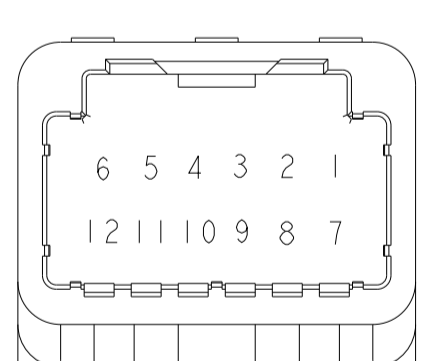
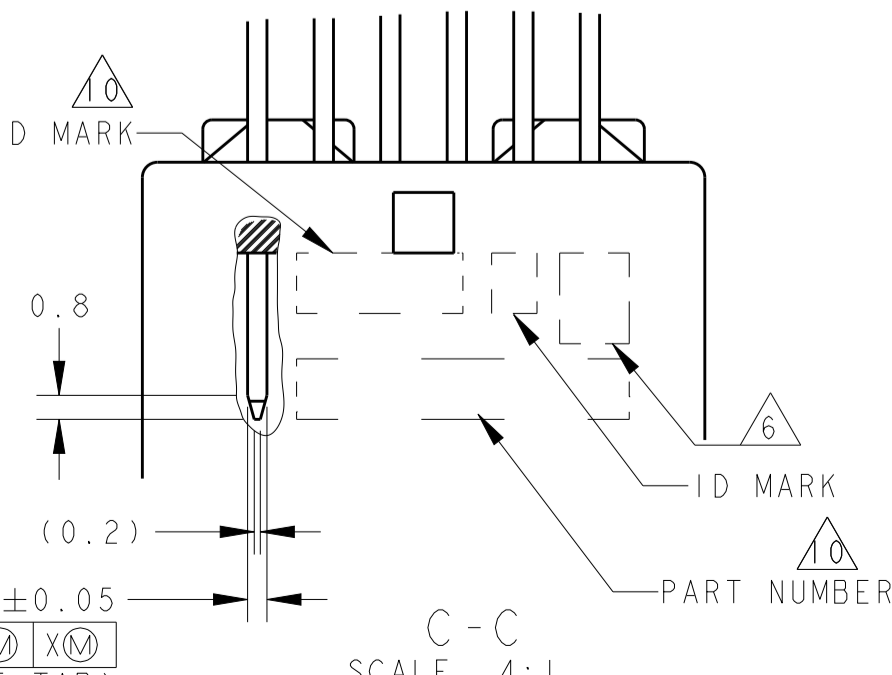


TABLE -1

POS 種数	PLUG HOUSING PART NO	プラグハウジング 型番
12	1318774	
	1376675	
	1717106	
	1746872	

FIG.1 回路図 CIRCUIT NUMBER



C-C SCALE 4:1

CIRCUIT NO.	POS	DIA	CARTON BOX	PLASTIC TUBE	CONTACT FINISH		MATERIAL	COLOR	PART NUMBER	
					SELECTIVE TIN (MATTE)	SELECTIVE TIN (BRIGHT)				
14	3.7	Ø2.4	CARTON BOX	PLASTIC TUBE	1~5, 7~11	SELECTIVE TIN (MATTE)	PBT GF15	NATURAL	2-1318772-9	
					6, 12	SELECTIVE TIN (MATTE)				SELECTIVE GOLD
62	3.7	Ø2.4	CARTON BOX	PLASTIC TUBE	1~12	SELECTIVE TIN (MATTE)	PBT GF15	NATURAL	6318772-6	
△12	3.2	Ø2.63	CARTON BOX	PLASTIC TUBE	1~12	SELECTIVE TIN (MATTE)	SPS GF17	BLACK	2-1318772-4	
11	3.7	Ø2.4	PLASTIC BOX	PLASTIC TUBE	1~9, 11, 12	SELECTIVE TIN (MATTE)	PBT GF15	BLACK	△9 2-1318772-3	
10	3.7	Ø2.4	CARTON BOX	PLASTIC TUBE	1~12	SELECTIVE TIN (MATTE)	PBT GF15	NATURAL	2-1318772-2	
62	3.7	Ø2.4	CARTON BOX	PLASTIC TUBE	1~12	SELECTIVE TIN (MATTE)	PBT GF15	BLACK	6318772-5	
62	3.7	Ø2.4	PLASTIC BOX	PLASTIC TUBE	1~12	SELECTIVE TIN (MATTE)	PBT GF15	BLACK	6318772-4	
62	3.7	Ø2.4	PLASTIC BOX	PLASTIC TUBE	1~12	SELECTIVE TIN (MATTE)	PBT GF15	NATURAL	6318772-3	
10	3.7	Ø2.4	CARTON BOX	PLASTIC TUBE	1~12	SELECTIVE TIN (MATTE)	PBT GF15	BLACK	2-1318772-1	
10	3.7	Ø2.4	PLASTIC BOX	PLASTIC TUBE	1~12	SELECTIVE TIN (MATTE)	PBT GF15	BLACK	2-1318772-0	
△8	3.2	Ø2.63	CARTON BOX	PLASTIC TUBE	1~12	SELECTIVE TIN (MATTE)	SPS GF17	NATURAL	1-1318772-9	
△6	3.2	Ø2.63	CARTON BOX	PLASTIC TUBE	1~12	SELECTIVE TIN (MATTE)	SPS GF17	BLACK	1-1318772-8	
△6	3.2	Ø2.63	PLASTIC BOX	PLASTIC TUBE	1~12	SELECTIVE TIN (MATTE)	SPS GF17	BLACK	1-1318772-7	
△6	3.2	Ø2.63	PLASTIC BOX	PLASTIC TUBE	1~12	SELECTIVE TIN (MATTE)	SPS GF17	NATURAL	1-1318772-6	
△9	3.2	Ø2.63	PLASTIC BOX	PLASTIC TUBE	1~9, 11, 12	SELECTIVE TIN (MATTE)	SPS GF17	BLACK	△9 1-1318772-5	
△8	3.2	Ø2.63	PLASTIC BOX	PLASTIC TUBE	1~12	SELECTIVE TIN (MATTE)	SPS GF17	NATURAL	1-1318772-4	
△6	3.2	Ø2.63	CARTON BOX	PLASTIC TUBE	1~12	SELECTIVE TIN (MATTE)	SPS GF17	NATURAL	1-1318772-3	
5	3.7	Ø2.4	PLASTIC BOX	PLASTIC TUBE	1~9, 11, 12	SELECTIVE TIN	PBT GF15	BLACK	△9 1-1318772-2	
4	3.7	Ø2.4	CARTON BOX	PLASTIC TUBE	1~12	SELECTIVE TIN	PBT GF15	BLACK	1-1318772-0	
4	3.7	Ø2.4	CARTON BOX	PLASTIC TUBE	1~12	SELECTIVE TIN	PBT GF15	NATURAL	1318772-9	
1	3.7	Ø2.4	PLASTIC BOX	PLASTIC TUBE	1~12	SELECTIVE TIN	PBT GF15	BLACK	1318772-7	
2	3.7	Ø2.4	CARTON BOX	PLASTIC TUBE	1~12	TIN-LEAD	PBT GF15	NATURAL	△1318772-6	
2	3.7	Ø2.4	PLASTIC BOX	PLASTIC TUBE	1~12	TIN-LEAD	PBT GF15	NATURAL	1318772-3	
1	3.7	Ø2.4	CARTON BOX	PLASTIC TUBE	1~12	PRE-TIN	PBT GF15	NATURAL	1318772-2	
1	3.7	Ø2.4	PLASTIC BOX	PLASTIC TUBE	1~12	PRE-TIN	PBT GF15	NATURAL	1318772-1	
6 MARKING	WEIGHT (g)	v	OUTER 外装	INNER 内装	1~12	SOLDERING SIDE 半田付け側	CONTACT SIDE 接点側	MATERIAL 材料	COLOR 色	PART NUMBER 部品番号
			PACKING STYLE 梱包形態		CIRCUIT NO. 回路番号	CONTACT FINISH 接触面仕上げ		HOUSING ハウジング		

1. 嵌合相手ハウジングは TABLE -1 参照。プラグハウジングアクセソリアリと支障なく嵌合すること。
2. 推奨取付ねじ: JIS B1115, B1122タッピングねじ。ねじの種類、呼び径、長さは TABLE-2 参照。
3. ねじ締め付トルク (参考値): 0.392N・m REF。

1. PART NUMBER OF HOUSING TO BE MATE: SEE TABLE -1 TO BE MATED SMOOTHLY WITH THE PLUG HOUSING ASSEMBLY
2. RECOMMENDED SCREW: PAN-HEADED TYPE 2 TAPPING SCREW, NOMINAL DIAMETER 3mm LENGTH; SEE TABLE-2 (JIS B1115, B1122)
3. FASTENING TORQUE FOR SCREW (FOR REFERENCE): 0.392N・m REF

- △ Z: 番から6mmの位置で測定
5. 取扱い説明書 NO: 411-5928
- △ 6: コンタクト仕上識別記号; 表参照
- △ Z: 番から2mmの位置で測定
- △ 8: 試作の角量産されていない
- △ 9: ビン抜きアイテム。回路番号は FIG.1 参照
- △ 10: ID MARK, PART NUMBER を表示

- △ 4: MEASURED AT 6 mm FROM Z
5. INSTRUCTION SHEET NO: 411-5928
- △ 6: IDENTIFICATION MARK FOR THE CONTACT FINISH; SEE TABLE
- △ 2: MEASURED AT 2 mm FROM Z
- △ 8: PRELIMINARY - NOT RELEASED FOR PRODUCTION.
- △ 9: SEE FIG.1 FOR AVAILABLE CIRCUIT
- △ 10: ID MARK, PART NUMBER INDICATED

TABLE-2

プリント基板板厚 (mm)	THICKNESS OF PCB (mm)	1.2	1.6
固定用ねじ着下長さ (mm) <td>NOMINAL LENGTH OF SCREW (mm)</td> <td>5</td> <td>6</td>	NOMINAL LENGTH OF SCREW (mm)	5	6

THIS DRAWING IS A CONTROLLED DOCUMENT.

DIMENSIONS: 単位: mm

TOLERANCES UNLESS OTHERWISE SPECIFIED: 公差: ±0.3

9-PLC ±0.5
10-PLC ±0.5
11-PLC ±0.5
12-PLC ±0.5

MATERIAL: CONTACT: BRASS HOUSING: SEE TABLE

FINISH: SEE TABLE

WEIGHT: SEE TABLE

DATE: 2017.04.14

DRW: T. NOGUCHI 07FEB00
CHK: S. SHINDOU 07FEB00
APPV: N. SAI 07FEB00

NAME: 025 SERIES 12 POSITION (PCB H-TYPE) CAP HOUSING ASSEMBLY

SIZE: A1

CAGE CODE: 00779

DRAWING NO: 114-5250

REVISION: 1

SHEET: 1 OF 2

REV: H4

TE Connectivity

4

3

2

1

THIS DRAWING IS UNPUBLISHED.

RELEASED FOR PUBLICATION

© COPYRIGHT 2000

ALL RIGHTS RESERVED.

REVISIONS

変更

P	LTR	DESCRIPTION	ECN	DATE	DWN	APVD
		SEE 1 OF 2				

Technical drawing of a plug housing assembly. It shows a side view of a rectangular component with several pins on the left side. Two vertical dimension lines are shown on the right side, with values (15.4) and (18.6) indicating specific measurements.

CAP HOUSING ASSEMBLY

PLUG HOUSING ASSEMBLY

Technical drawing of a cap housing assembly. It shows a side view of a rectangular component with several pins on the left side. Three dimension lines are shown: a horizontal one at the top with value (24.5), and two vertical ones on the right with values (15.8) and (17.2). Arrows point from the labels 'CAP HOUSING ASSEMBLY' and 'PLUG HOUSING ASSEMBLY' to the respective parts of the drawing.

CAP ASSEMBLY & PLUG ASSEMBLY ENGAGEMENT DRAWING
 キャップアッセンブリ & プラグアッセンブリ 嵌合図

THIS DRAWING IS A CONTROLLED DOCUMENT.

DWN Y. NOGUCHI 07FEB00

CHK S. SHINDOU 07FEB00

APVD N. SAI 07FEB00

PRODUCT SPEC

SEE 1 OF 2

APPLICATION SPEC

SEE 1 OF 2

WEIGHT SEE 1 OF 2

CUSTOMER DRAWING

TE Connectivity

NAME
 名称 025 SERIES 12 POSITION (PCB H-TYPE)
 MATING LAYOUT

DIMENSIONS:
 単位: 耗
 mm

TOLERANCES UNLESS
 OTHERWISE SPECIFIED:

一般公差

0 PLC ±

1 PLC ±

2 PLC ±

3 PLC ±

4 PLC ±

ANGLES ±

MATERIAL

SEE 1 OF 2

FINISH

SEE 1 OF 2

SIZE

A3

CAGE CODE

00779

DRAWING NO

番号

G-1318772

RESTRICTED TO

-

SCALE

尺度 2:1

SHEET

2

OF

2

REV

H4

1470-19 (3/13)

Downloaded From Onevac.com

单击下面可查看定价，库存，交付和生命周期等信息

[>>TE Connectivity\(泰科\)](#)