

THIS DRAWING IS UNPUBLISHED.

RELEASED FOR PUBLICATION

ALL RIGHTS RESERVED.

© COPYRIGHT - By -

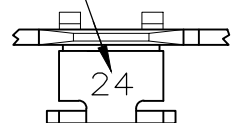
LOC AF DIST 50

REVISIONS

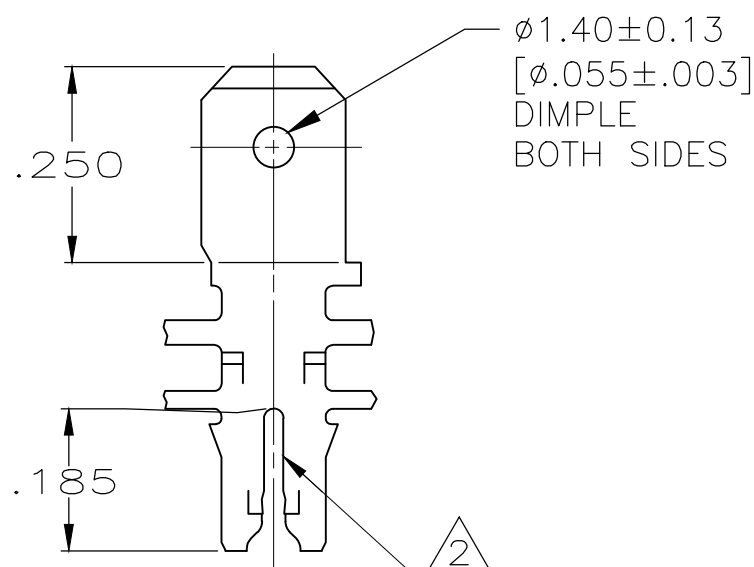
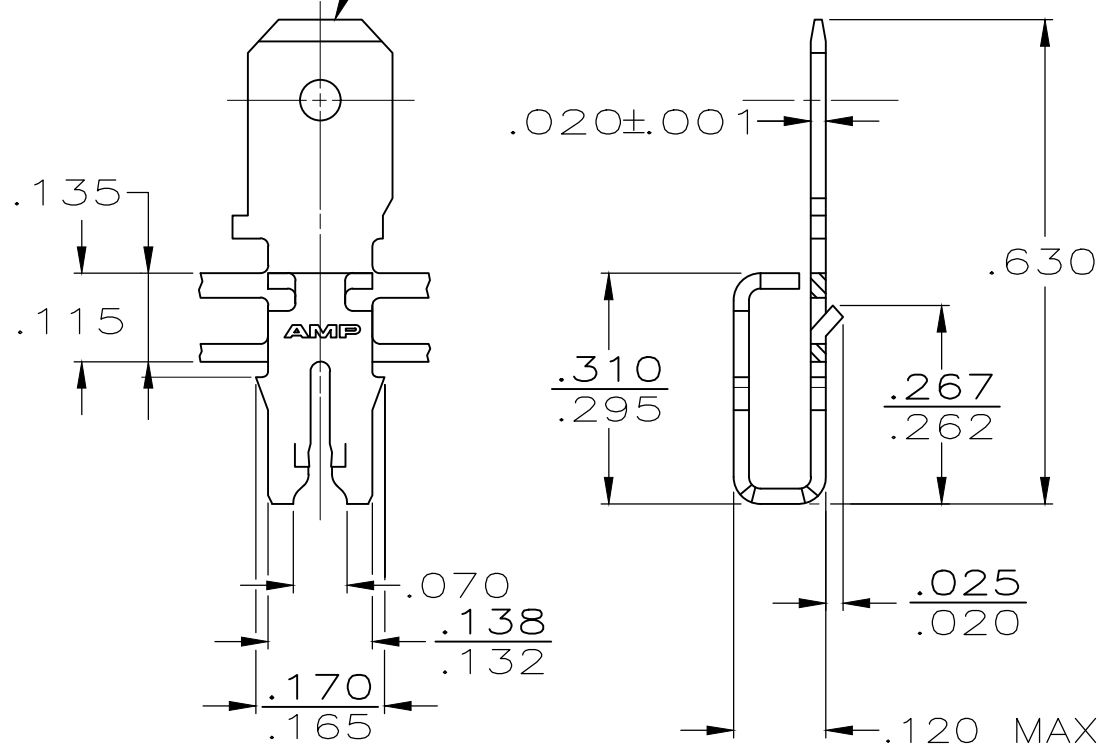
P	LTR	DESCRIPTION	DATE	DWN	APVD
	S3	REVISED PER ECR-18-014081	21SEP2018	BDA	SV

- 1 CONTINUOUS STRIP ON REELS WITH TERMINALS LOCATED ON .220 CENTERS.
- 2 SLOT ACCEPTS SINGLE #19-#17 AWG COPPER MAGNET WIRE. OR SLOT ACCEPTS SINGLE #18.5-#17 AWG ALUMINUM MAGNET WIRE. ALUMINUM WIRE RANGE APPLIES FOR POST-TIN PLATED VERSIONS ONLY.
- 3 AFTER INSERTION INTO PLASTIC HOLDER TAB PORTION MUST BE BENT OVER 45° TO 90° OR POTTED TO PREVENT PULL-OUT WHEN MATING RECEPTACLE IS DISCONNECTED.

IDENTIFICATION NUMBER 24 FOR MAGNET WIRE RANGE.



FITS .187 SERIES FASTON RECEPTACLE



SPLICE FREE	62888-2
-	62888-1
REELING	PART NUMBER

THIS DRAWING IS A CONTROLLED DOCUMENT.		DWN 11/7/88 MICHAEL S. FEHER	STE TE Connectivity		
DIMENSIONS: INCHES		CHK 11/9/88 JEFF R. RUTH			
TOLERANCES UNLESS OTHERWISE SPECIFIED:		APVD -	NAME TAB, 187 FASTON, MAG-MATE		
0 PLC ± -		PRODUCT SPEC	108-2012		
1 PLC ± -		APPLICATION SPEC	114-2067		
2 PLC ± -		SIZE	CAGE CODE	DRAWING NO	RESTRICTED TO
3 PLC ± .010		114-2067	A3	00779	C-62888
4 PLC ± -		WEIGHT	CUSTOMER DRAWING		
ANGLES ± 1°		-	SCALE	SHEET	REV
MATERIAL BRASS	FINISH TIN PLATE	4:1			1 OF 1
		S3			

单击下面可查看定价，库存，交付和生命周期等信息

[>>TE Connectivity\(泰科\)](#)