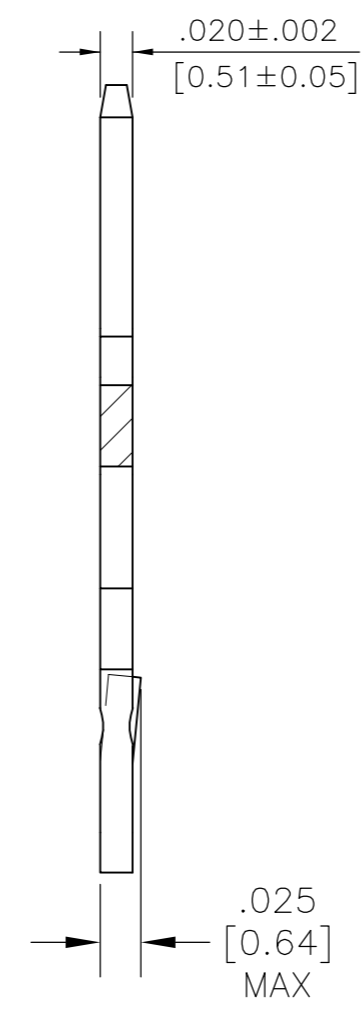
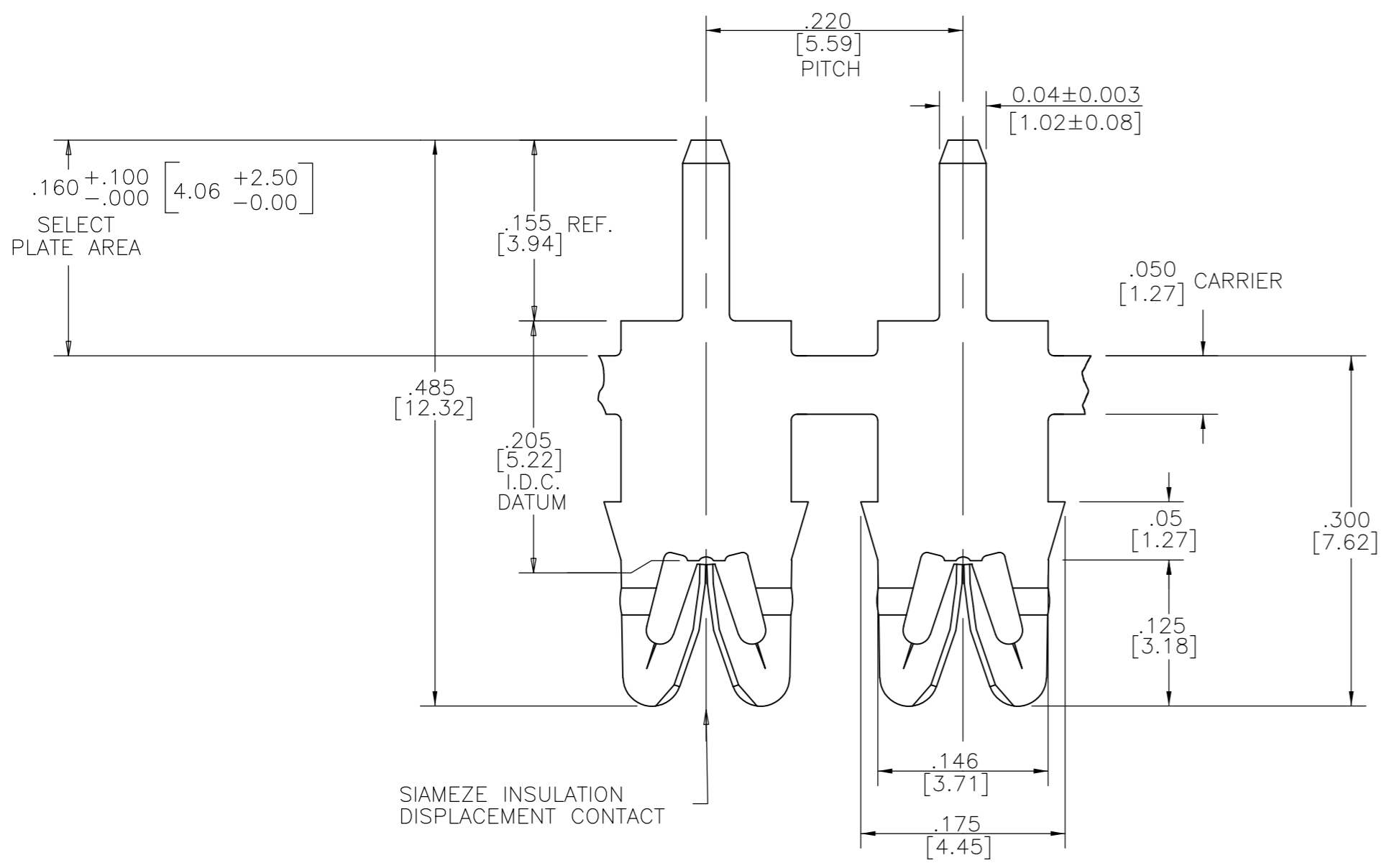
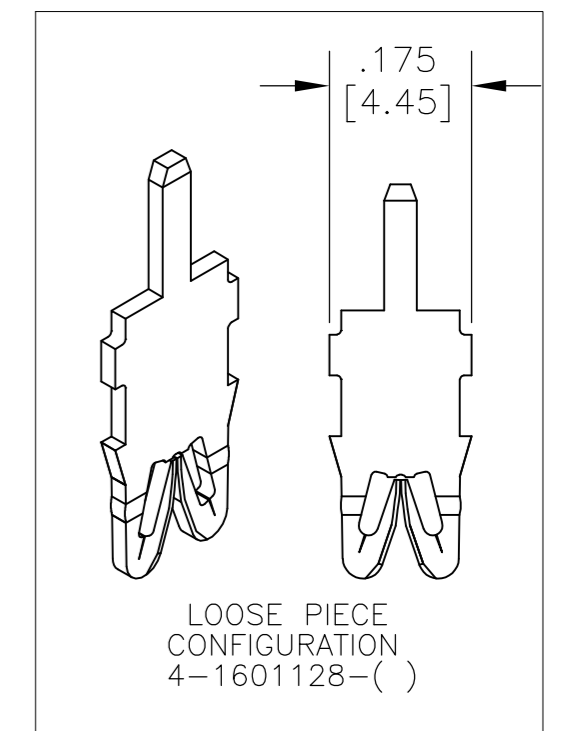


THIS DRAWING IS UNPUBLISHED. RELEASED FOR PUBLICATION  
 © COPYRIGHT - By - ALL RIGHTS RESERVED.

LOC	DIST	REVISIONS					
		P	LTR	DESCRIPTION	DATE	DWN	APVD
AF	50		D3	REVISED PER ECR-13-003857	09MAR13	KH	GJ

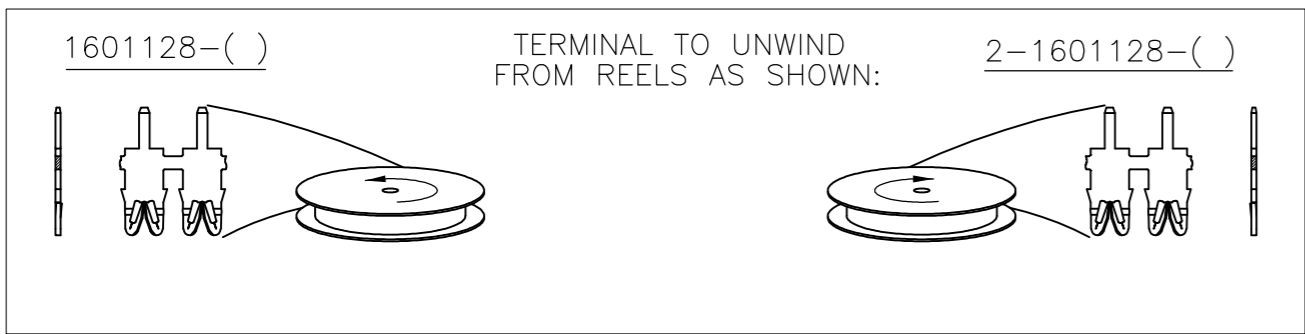


- 1 SPECIFICATIONS:  
MAGNET WIRE #27 - #36 AWG,  
0.38mm (.015") - 0.13mm (.005") DIA, COPPER.
- 2 POCKET RECOMMENDATION: #1601425
- 3 TERMINAL APPLICATION TO COMPLY WITH TYCO ELECTRONICS SPECIFICATION 114-13166 FIGURE 7.
- 4 TERMINALS SUPPLIED ON REELS, CAN BE SUPPLIED LOOSE PIECE,
- 5 TWO (2) TERMINALS SHOWN FOR ILLUSTRATION PURPOSES ONLY
- 6 PRE-PRODUCTION - FASR REQUIRED.



SUPERSEDED BY 2-1601128-3

SUPERSEDED BY 1601128-3



SELECTIVE TIN PLATE OVER NICKEL	-	2-1601128-3
SELECTIVE POST TIN-LEAD PLATE OVER NICKEL	150-026-119	2-1601128-2
UNPLATED	150-026-000	2-1601128-1
PRE-PLATED TIN OVER NICKEL	-	1601128-4
SELECTIVE TIN PLATE OVER NICKEL	-	1601128-3
SELECTIVE POST TIN-LEAD PLATE OVER NICKEL	150-025-119	1601128-2
UNPLATED	150-025-000	1601128-1
FINISH	REFERENCE PART NUMBER	TYCO PART NUMBER
THIS DRAWING IS A CONTROLLED DOCUMENT.		DWN J.WELLER 11JAN2002
DIMENSIONS: INCHES [mm]		CHK M.FEHER 11JAN2002
TOLERANCES UNLESS OTHERWISE SPECIFIED:		APVD K.RANDOLPH 11JAN2002
0 PLC ± -	1 PLC ± -	NAME
2 PLC ± .01[0.25]	3 PLC ± .005[0.13]	PRODUCT SPEC
4 PLC ± -	ANGLES ± 2°	108-2244
MATERIAL BRASS, SPRING HARD	FINISH SEE TABLE	APPLICATION SPEC
WEIGHT -		3
CUSTOMER DRAWING		SIZE A2
SCALE 1:3		CAGE CODE 00779
SHEET 1 OF 1		DRAWING NO C-1601128
REV D3		RESTRICTED TO -



FINE RANGE WIRE TO .040 X .020 P.C.B. SIAMEZE TERMINAL

单击下面可查看定价，库存，交付和生命周期等信息

[>>TE Connectivity\(泰科\)](#)