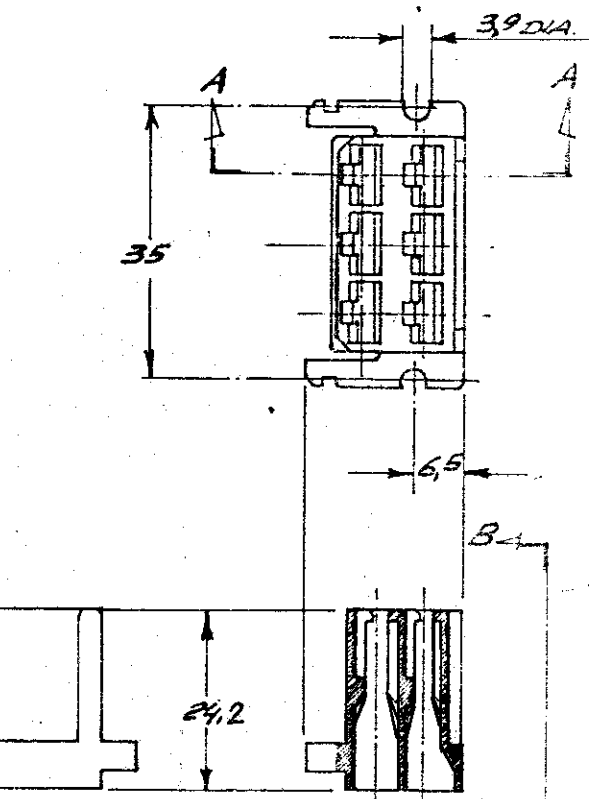
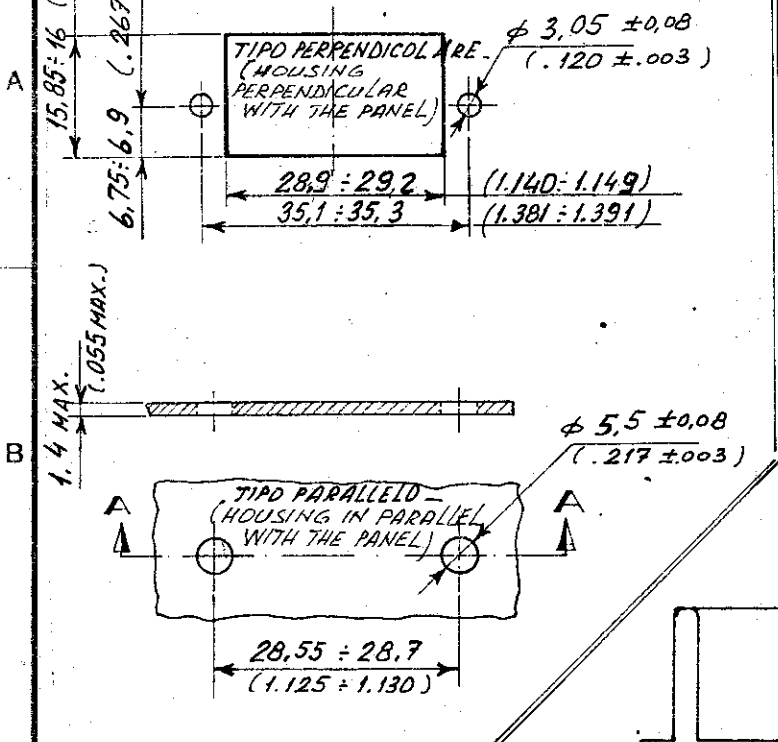


**DIME DI FORATURA**  
(RECOMMENDED PANEL CUTOUT)

SCALA NON IMPEGNATIVA  
(DO NOT SCALE)  
DIMENSIONI IN mm  
DIMENSIONS IN mm

**METRIC**

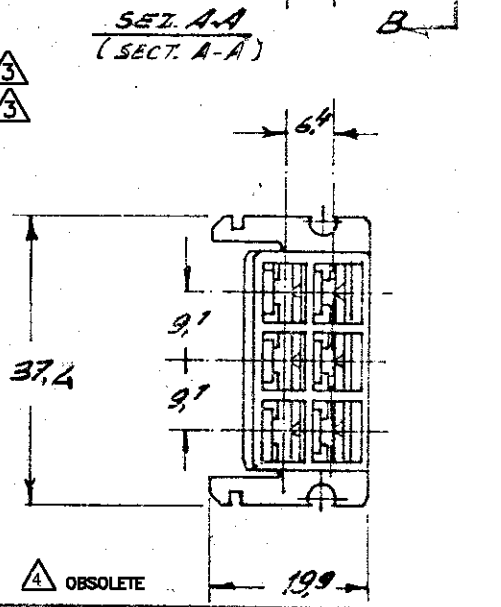
PROIEZIONE EUROPEA  
(EUROPEAN PROJECTION)



NOTE:  $\Delta$  NON PRODOTTO DALL' TE ITALIA; SOLO PER PRODUZIONE TE GERMANY. (NOT PRODUCED BY TE ITALY; FOR TE GERMANY PRODUCT ONLY)

$\Delta$  OBSOLETE PARTS: OBSOLETE CIS STREAMLINING PER D.RENAUD/D.SINISI

NOTE (NOTES)	COLORE (COLOUR)	MATERIALE (MATERIAL)	NUMERO (PART NUMBER)
	CLEAR	180904-0	3-180904-0
	NEUTRO (CLEAR)	POLIAMMIDE 6.6 ULTRAV. (PA 6.6 F.R. 94V-0)	3-180904-0
	ARANCIO (ORANGE)		$\Delta$ 180904-1
	VIOLETTA (VIOLET)		$\Delta$ 180904-2
	GRIGIO (GRAY)		$\Delta$ 180904-3
	MARRONE (BROWN)		$\Delta$ 180904-4
	NERO (BLACK)		$\Delta$ 180904-5
	GIALLO (YELLOW)		$\Delta$ 180904-6
	BLU (BLUE)		$\Delta$ 180904-7
	VERDE (GREEN)		$\Delta$ 180904-8
	ROSSO (RED)		$\Delta$ 180904-9
	NEUTRO (CLEAR)		180904-0



$\Delta$  SAME AS 180904-0 EXCEPT PACKAGING: TWO PLASTIC BAG WITH 10 PIECES ON CARTON BOX / 400

FINITURA / COLORE (FINISH / COLOUR)	MATERIALE (MATERIAL)	NUMERO (PART NUMBER)

**CUSTOMER DWG. FOR REFERENCE ONLY**      **DISEGNO PER CLIENTE SOLO PER RIFERIMENTO**

THIS DRAWING IS UNPUBLISHED - RELEASE FOR PUBLICATION  
 © COPYRIGHT 19 BY TE INCORPORATED, HARRISBURG, PA ALL INTERNATIONAL RIGHT RESERVED TE PRODUCTS MAY BE COVERED BY U.S. AND FOREIGN PATENT AND/OR PATENT PENDING

REV.	REVISIONI (REVISION RECORD)	DIS. DATA (DATE)
AP2	ECR-10-022530	KK 11FEB11
AP1	REV PER ECO-10-000445	KK JAN10
AP	Revised by ES-005V-0V	U PROV
AN	Revised by ES00-011-97	AP EN 77
AM	Revised by ES00-0052-97	AP OCT 77
AL	Revised for ET00-0005-97	EN 01
N	RIVISTO E RIDISEGNATO; ELIMINATI I PINS CON NUMERAZ. SERIE RATA (REVISED & REDRAWN, OBSOLETE PINS WITH EXTRA NUMBERING)	24-6-86

TOLLERANZE: SE NON DIVERSAMENTE SPECIFICATO (TOLERANCES UNLESS OTHERWISE SPECIFIED)	DIAM. ISOLANTE (INS. DIA. RANGE)	RANGO FILO (WIRE RANGE)	SCALA (SCALE)
$\pm 0,4$	$\pm 0,4$	$\pm 0,4$	$\pm 0,4$
ANGOLI (ANGLES) $\pm 2^\circ$	TE Connectivity		
DIS. (DR.)	DESCRIZIONE (DESCRIPTION): <b>6 WAY FASTIN-FASTON REC. HOUSING - .250" SER.</b>		
APP. (APP.)	LOC. SIZE (DWG. NO.)	NUMERO (DWG. NO.)	REV. (REV.)
	ALA	C-180904	AP2

DISTRIBUZIONE (PRINT DIST.)

单击下面可查看定价，库存，交付和生命周期等信息

[>>TE Connectivity\(泰科\)](#)