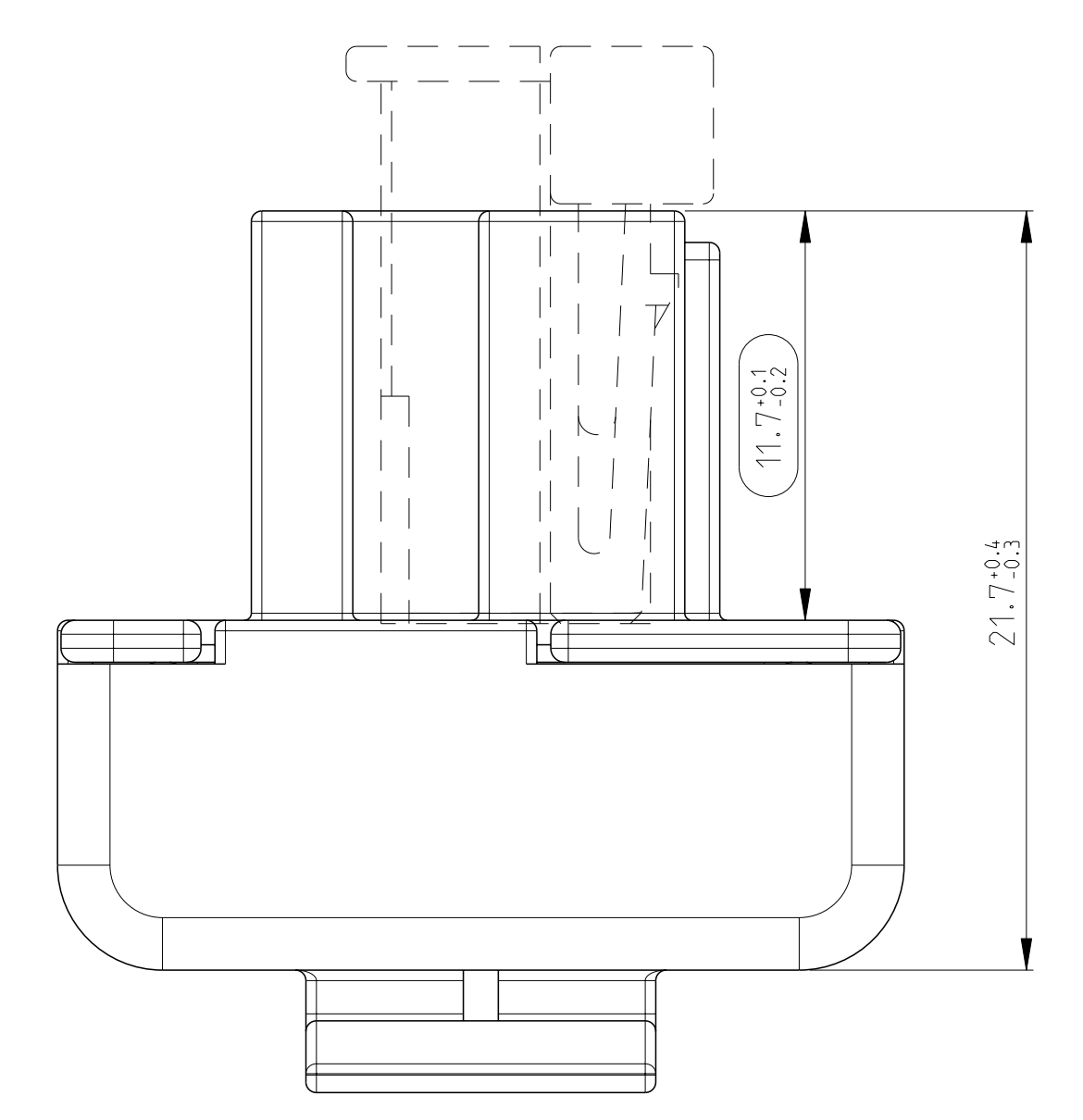
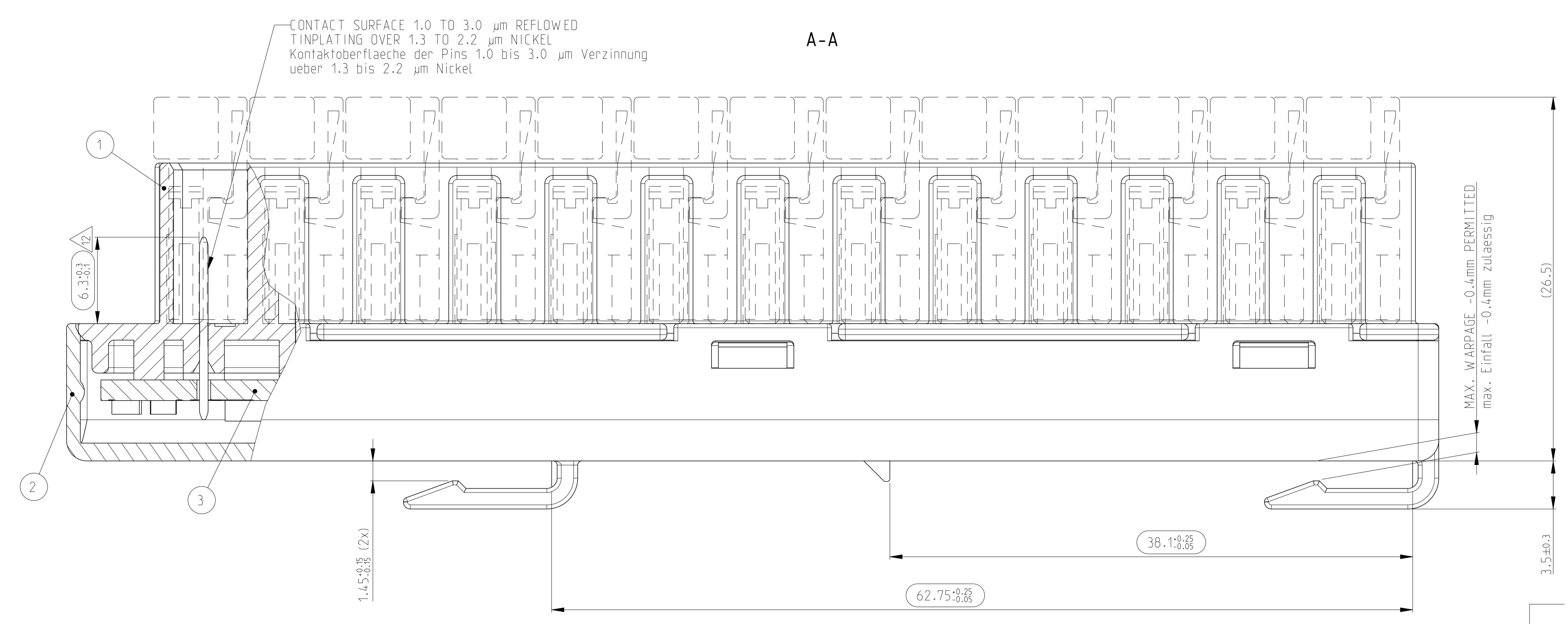
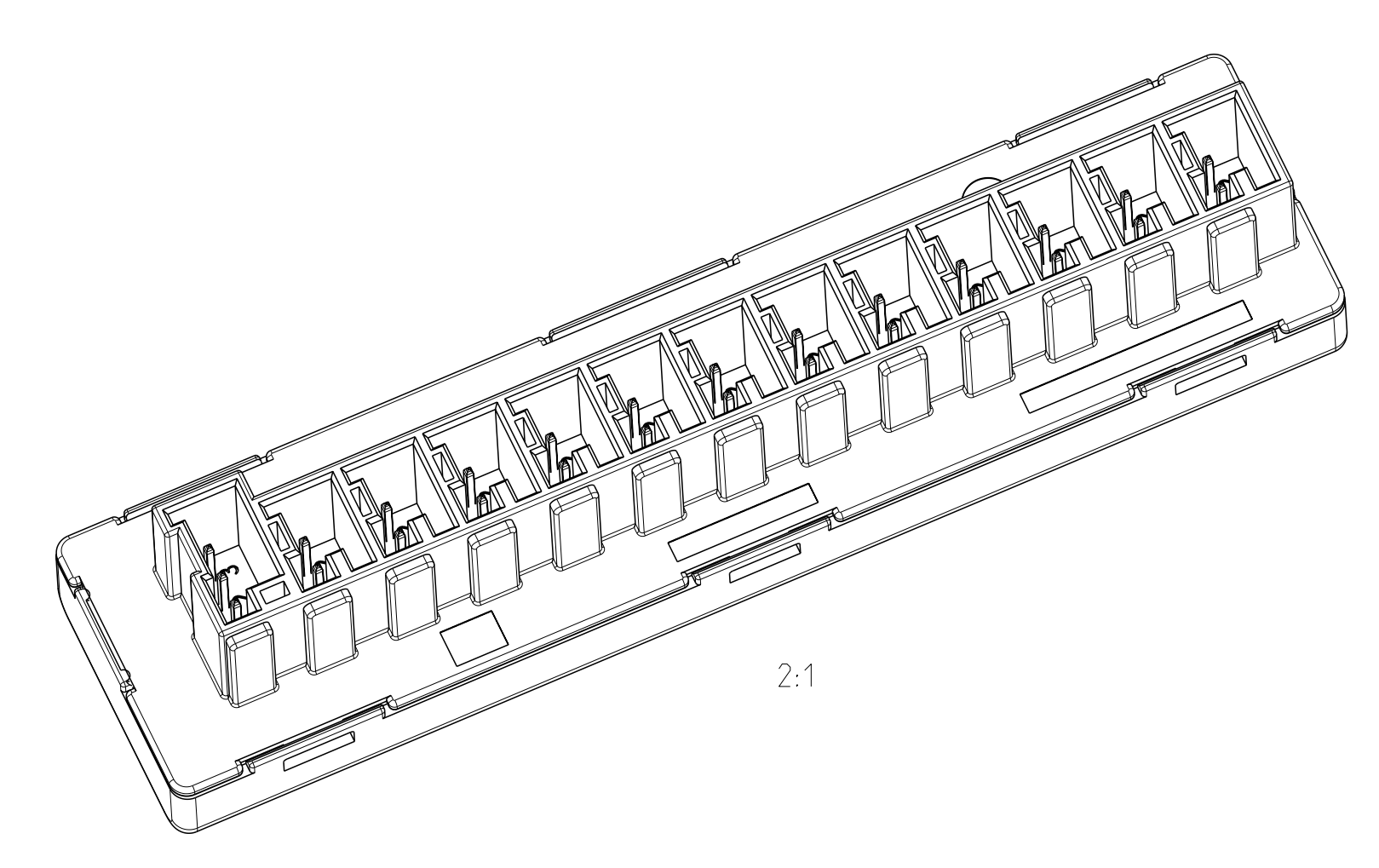
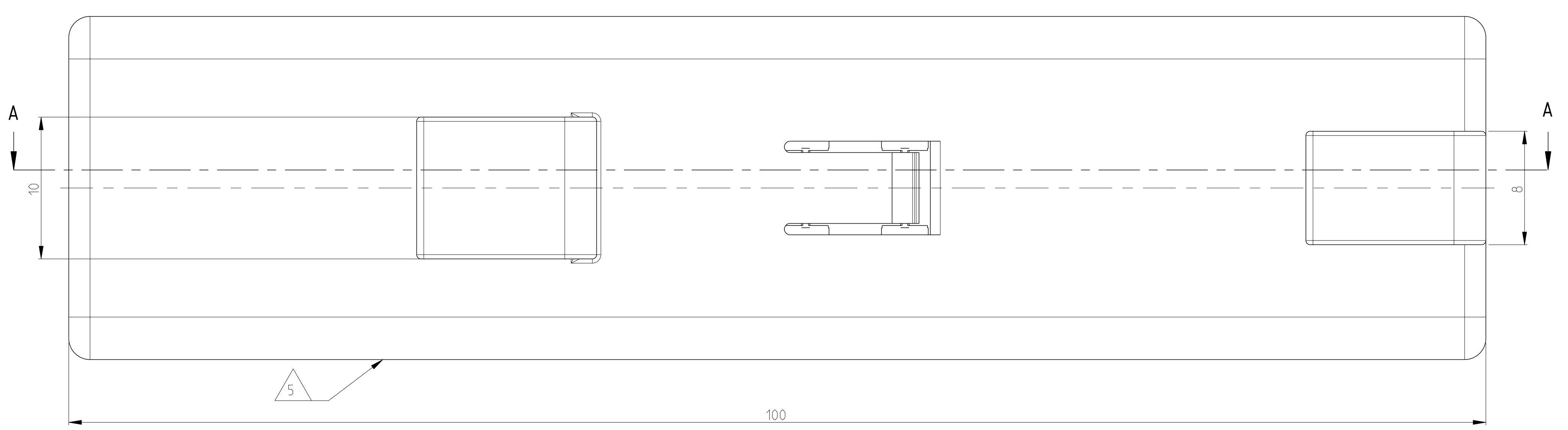
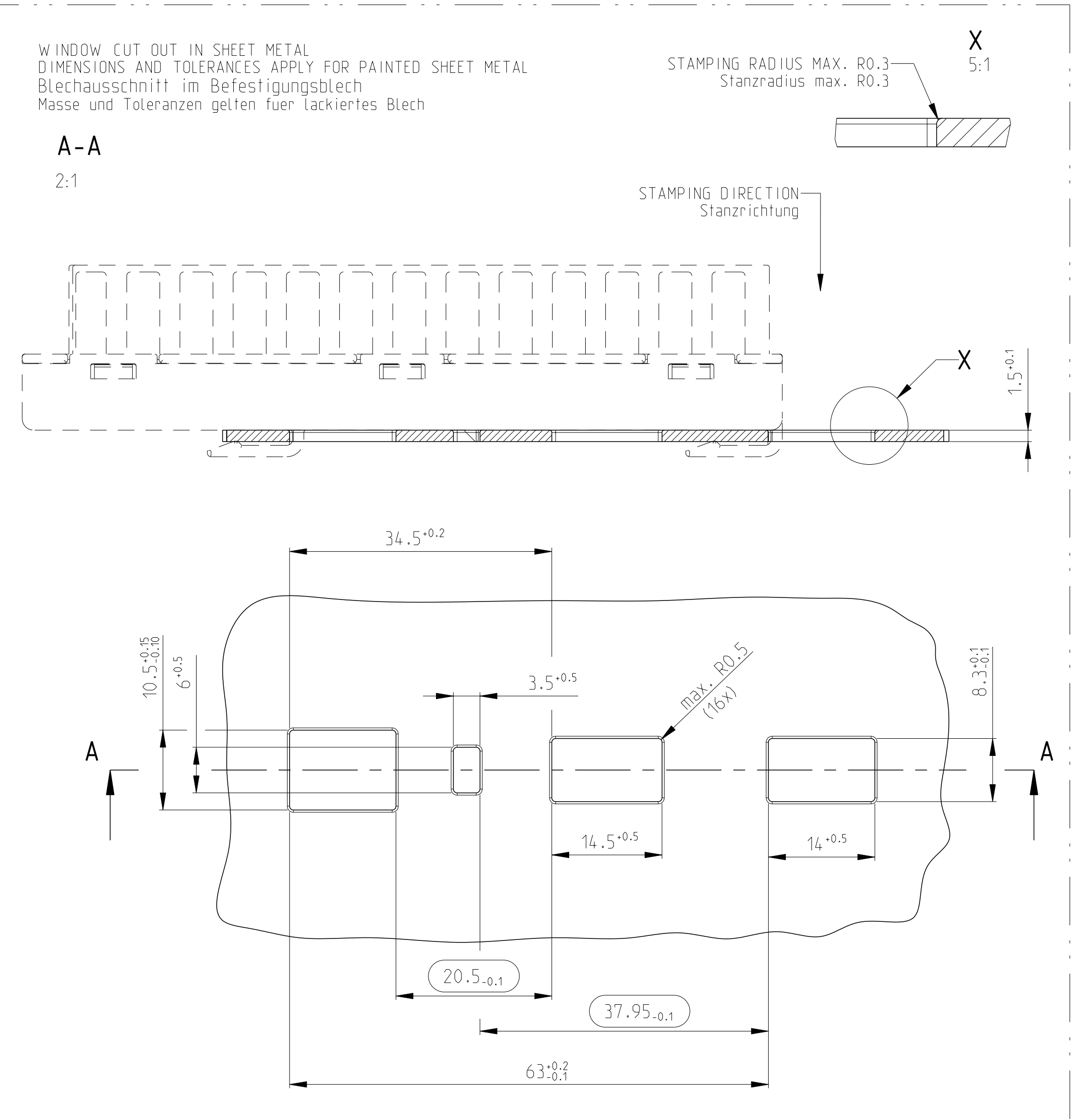
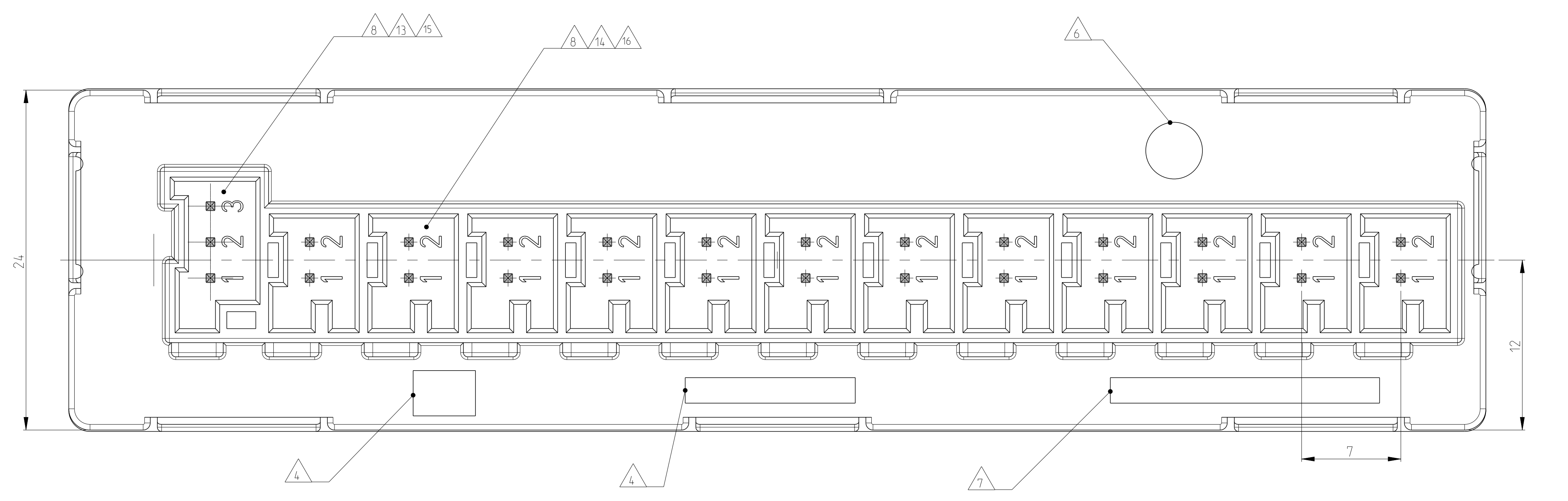
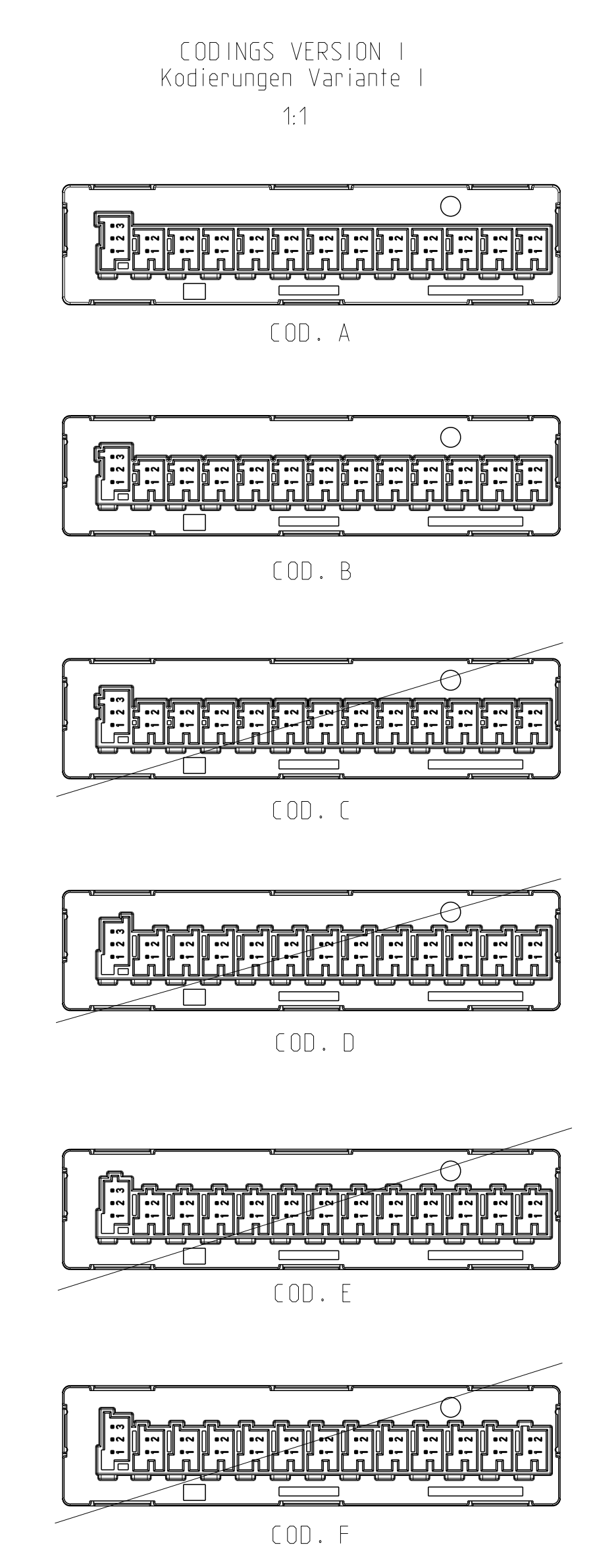


REV.	DATE	DESCRIPTION	BY	CHK	APPV
A1	13JAN2010	add version 5-1418647-5	CG	HHC	
A2	02SEP2011	deleted vers. 5-1418647-5	CR		

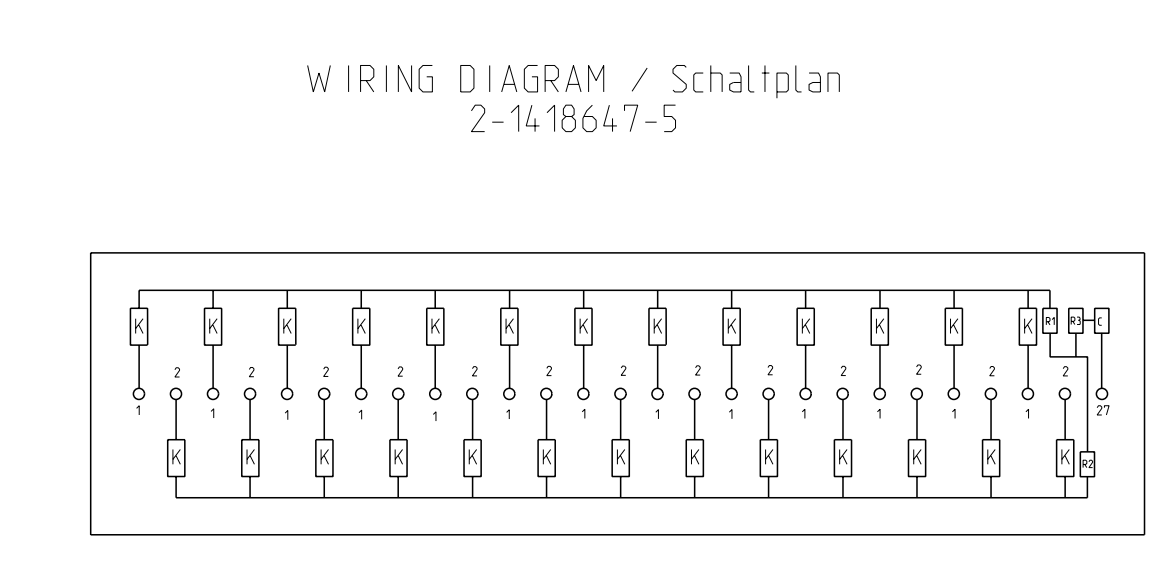
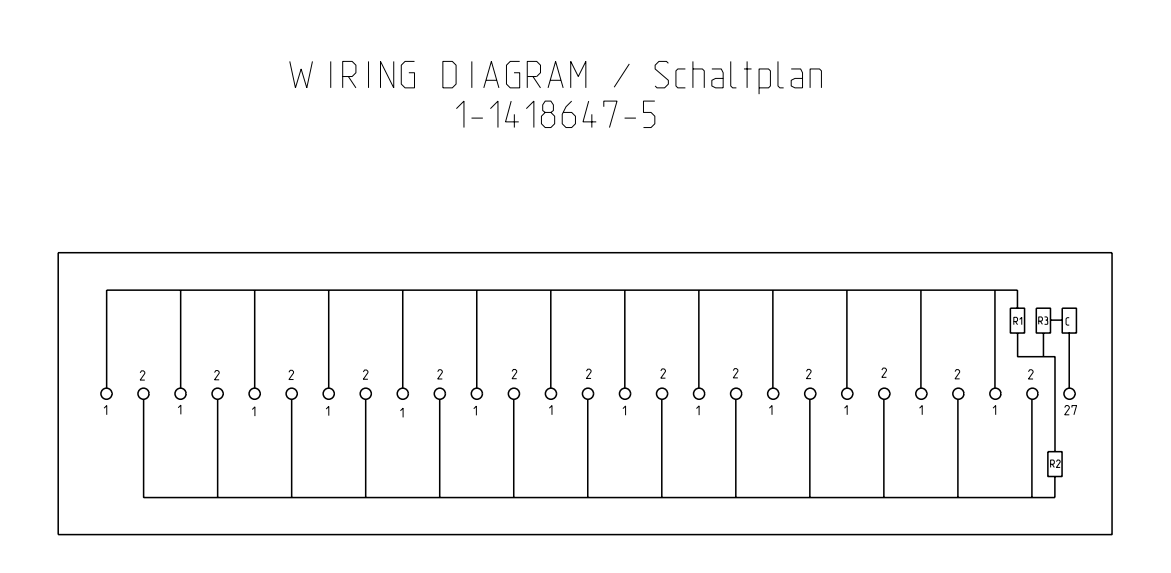
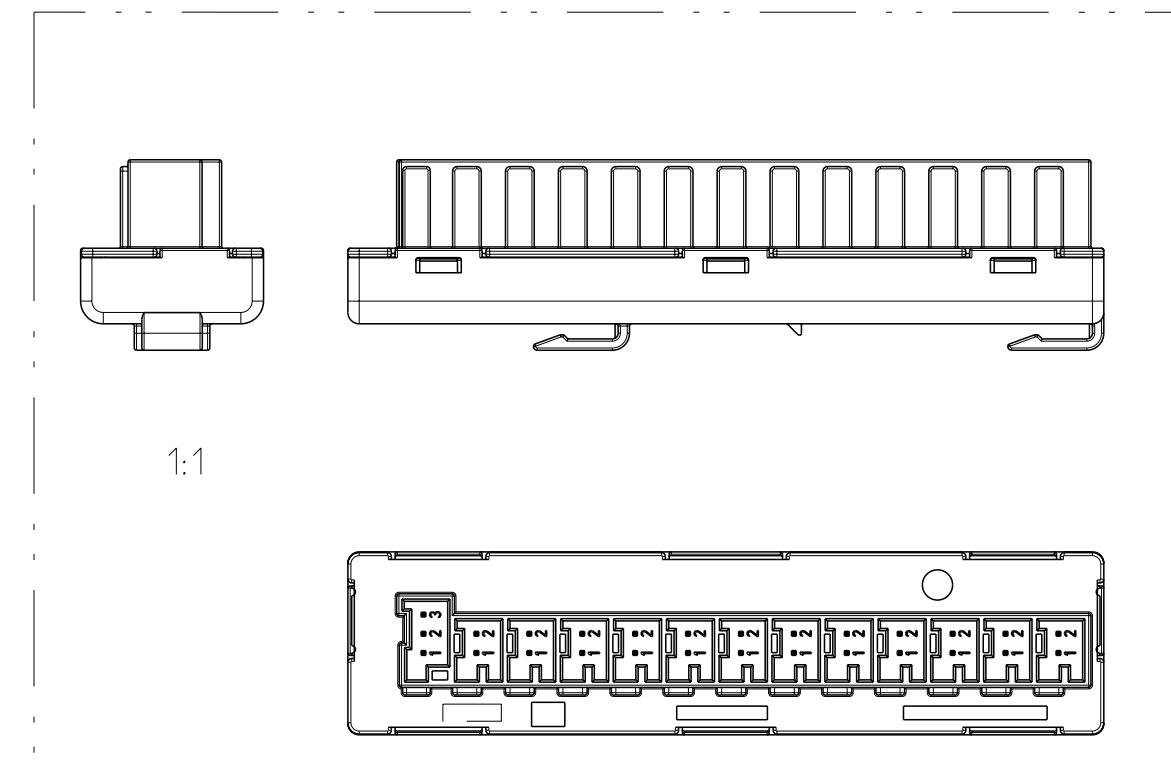


- NOTES:
 Bemerkungen:
- ONLY THE GERMAN LANGUAGE SHALL BE BINDING
 Massgebend ist der deutsche Text
 - 1- -1 AS SHOWN
 wie gezeichnet
 - FUNCTIONALLY MEASUREMENTS MARKED WITH Funktionsbestimmende Masse, sind mit gekennzeichnet
 - SUPPLIER MARK
 Lieferantenkennzeichnung
 - MANUFACTURING IDENTIFIER
 Herstellungskennung
 - DATE INSERT
 Datumstempel
 - MATERIAL IDENTIFICATION
 Materialkennzeichnung
 - CODINGS ACCORDING TO THE CODING DESIGNATION OF THE SPECIFICATION AND THE SUITABLE SOCKET HOUSINGS.
 Kodierungen entsprechen den Kodierungsbezeichnungen der AV und der zugehörigen Buchsengehäuse.
 - SMD-PARTS ON PRINTED CIRCUIT BOARD:
 RESISTORS:
 R1 AND R2 = 56-64 Ω ±1%, 250 mW; R3 = 10 Ω ±5% 200 mW
 CONDENSER: C1 = 47 nF
 FERRITE CHIPS: K = TDK HF70ACB322513
 SMD-Bauteile auf der Leiterplatte:
 Widerstände:
 R1 und R2 = 56-64 Ω ±1%, 250 mW; R3 = 10 Ω ±5% 200 mW
 Kondensator: C1 = 47 nF
 Ferritkerne: K = TDK HF70ACB322513
 - SMD-PARTS ON PRINTED CIRCUIT BOARD:
 RESISTORS:
 R1 AND R2 = 28-32 Ω ±1%, 250 mW; R3 = 10 Ω ±5% 200 mW
 CONDENSER: C1 = 47 nF
 SMD-Bauteile auf der Leiterplatte:
 Widerstände:
 R1 und R2 = 28-32 Ω ±1%, 250 mW; R3 = 10 Ω ±5% 200 mW
 Kondensator: C1 = 47 nF
 - SMD-PARTS ON PRINTED CIRCUIT BOARD:
 RESISTORS:
 R1 AND R2 = 56-64 Ω ±1%, 250 mW; R3 = 10 Ω ±5% 200 mW
 CONDENSER: C1 = 47 nF
 SMD-Bauteile auf der Leiterplatte:
 Widerstände:
 R1 und R2 = 56-64 Ω ±1%, 250 mW; R3 = 10 Ω ±5% 200 mW
 Kondensator: C1 = 47 nF
 - DIMENSION WAS DETERMINATED DIFFERENT FROM SPECIFICATION 114-18562 AND 114-18563
 Masse abweichend von Ausführungsvorschrift 114-18562 und 114-18563 festgelegt



NOTE	FEATURE	TE Connectivity - No.
13	AV - INTERFACE AV - Schnittstelle	114-18563
14	AV - INTERFACE AV - Schnittstelle	114-18562
15	USEABLE SOCKET HSG passende Kupplung	1418640
16	USEABLE SOCKET HSG passende Kupplung	1418639
17	PRODUCT SPEC. Product Spec.	108-18861

TITLE	MASS [kg]	COD	TE-ORDER-NO.	REV	QTY	ITEM
Energieverteiler CAN 12x2pol./1x3pol.	0,021	B	2-1418647-5	C	1	1
Energieverteiler CAN 12x2pol./1x3pol.	0,021	A	1-1418647-5	C	1	1



THIS DRAWING IS A CONTROLLED DOCUMENT
 THIS DOCUMENT IS THE PROPERTY OF STC
 ALL RIGHTS RESERVED

DATE: 12JAN2010
 BY: C. Reck
 CHECKED: 22FEB2010
 BY: C. Geiger

DATE: 22FEB2010
 BY: H. Holland-Cubiz
 CHECKED: 22FEB2010
 BY: H. Holland-Cubiz

APPLICATION SPEC.
 VERIFICATION SPEC.
 DRAWING NO.
 00779

SCALE: 1:1
 SHEET: 1 OF 1

RESTRICTED TO
 NEW RELEASE

STE TE Connectivity
 POTENTIAL DISTRIBUTION 27POS.
 Potentialverteiler 27pol.
 Micro QuadDock System

单击下面可查看定价，库存，交付和生命周期等信息

[>>TE Connectivity\(泰科\)](#)