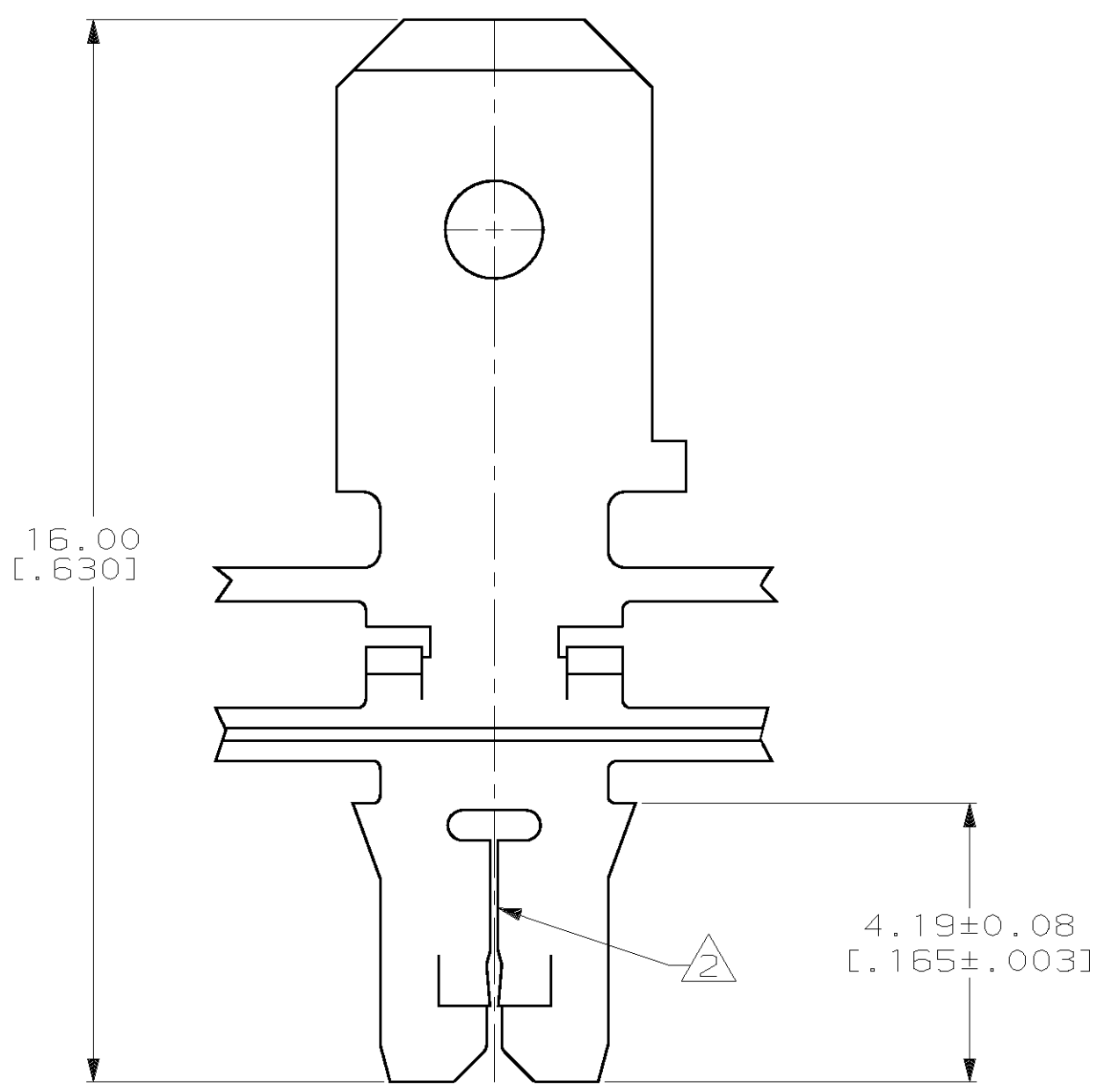
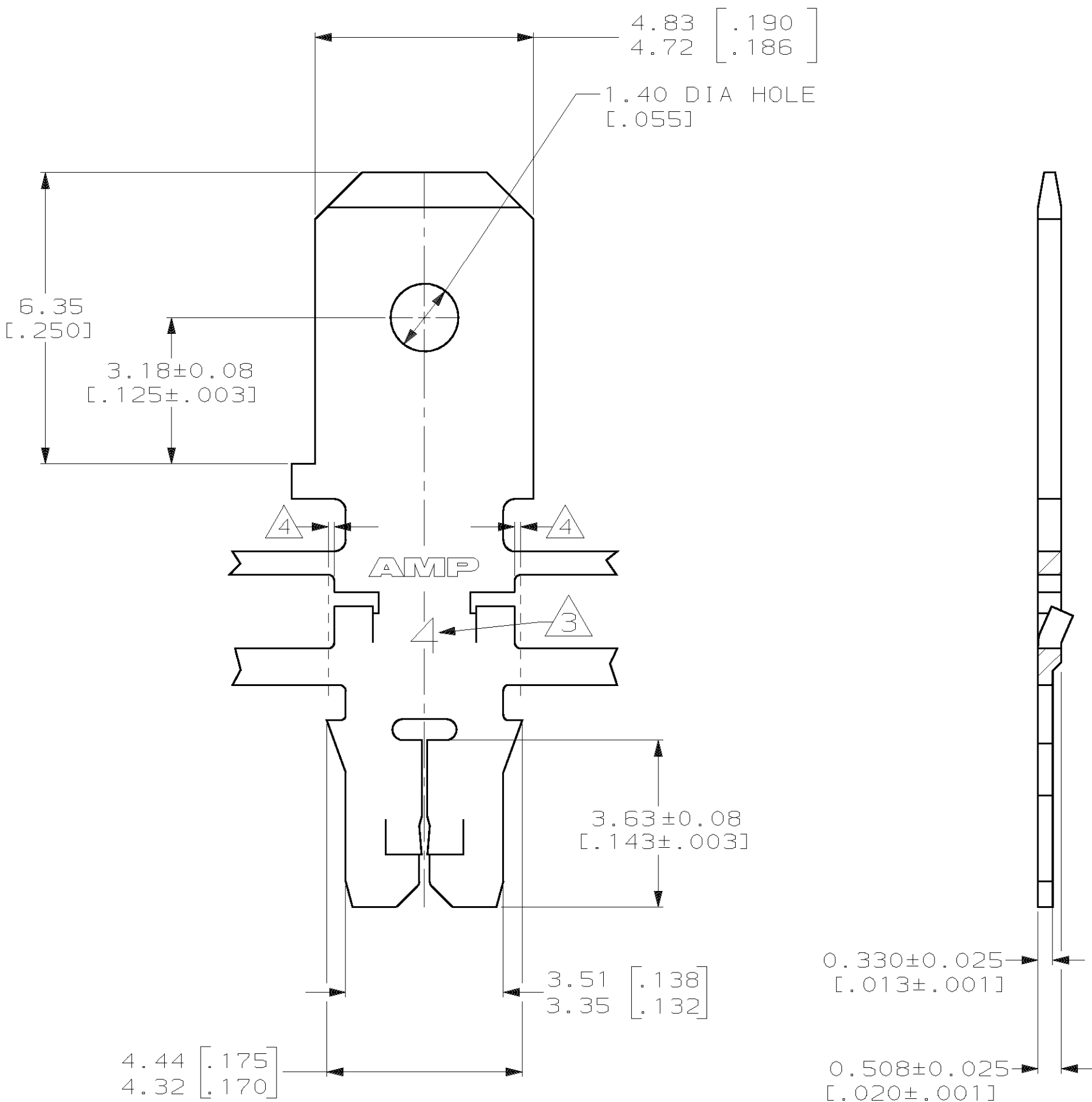


| LOC | DIST | P | F | ZONE | LTR | DESCRIPTION | DATE | APPD |
|-----|------|---|---|------|-----|--------------------------|---------|-------|
| AF | 50 | | | | F | REVISED PER 063A-0034-01 | 09FEB01 | MF-KR |

- 1 CONTINUOUS STRIP ON REELS WITH TERMINALS LOCATED ON 6.86±0.08 [.270±.003] CENTERS
- △2 SLOT ACCEPTS 0.18-0.23mm [#33-#31] AWG COPPER MAGNET WIRE. TWO WIRES OF THE SAME SIZE MAX PER SLOT
- △3 IDENTIFICATION NUMBER 4 FOR THE MAGNET WIRE SLOT SIZE
- △4 0.25[.010] MAX CARRIER CUT-OFF



| | | | | | |
|--|--|-----------------------------|---|-----------------|--------------------|
| DO NOT SCALE PRINT. UNLESS SPECIFIED DIMENSIONS IN mm [INCHES] TOLERANCES ON : 2 PLC DEC ± 0.13 [.005] 3 PLC DEC ± - ANGLES ± - | | DR 9-27-93 L.A.MAYER | 082 PRE-MILLED BRASS | | 63710-2 |
| MATERIAL SEE TABLE | | CHK 9-27-93 M.S. FEHER | 4M PRE-MILLED BRASS | | 63710-1 |
| FINISH 0.002032 [.000080] MIN TIN | | APPD 9-27-93 A.HUNT III | MATERIAL | | PART NO |
| APPLICATION SPEC 114-2140 | | APPD 9-27-93 T.L.SHUTTER | AMP AMP Incorporated Harrisburg, PA 17105-3608 | | |
| WEIGHT - | | PRODUCT SPEC 108-1484 | NAME TAB, 4.75 [.187] FASTON™ MAG-MATE™ Slim Line | | |
| SCALE 10:1 | | APPLICATION SPEC 114-2140 | SIZE C | CAGE CODE 00779 | DRAWING NO C=63710 |
| SHEET 1 OF 1 | | CUSTOMER DRAWING | | | |

THIS DRAWING IS A CONTROLLED DOCUMENT FOR AMP INCORPORATED. IT IS SUBJECT TO CHANGE AND THE CONTROLLING ENGINEERING ORGANIZATION SHOULD BE CONTACTED FOR THE LATEST REVISION.

单击下面可查看定价，库存，交付和生命周期等信息

[>>TE Connectivity\(泰科\)](#)