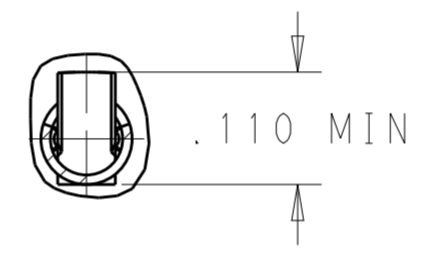
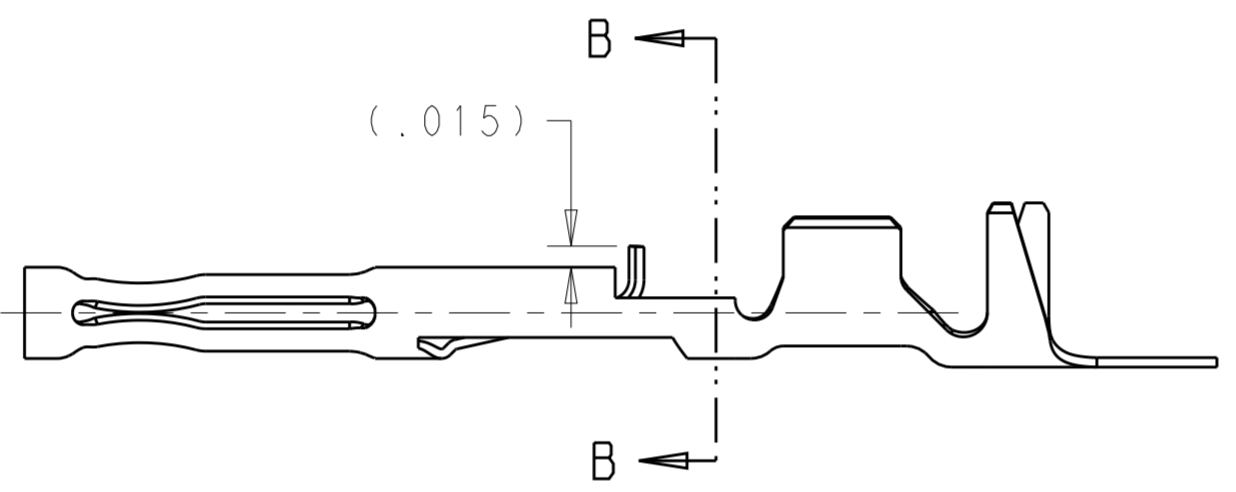
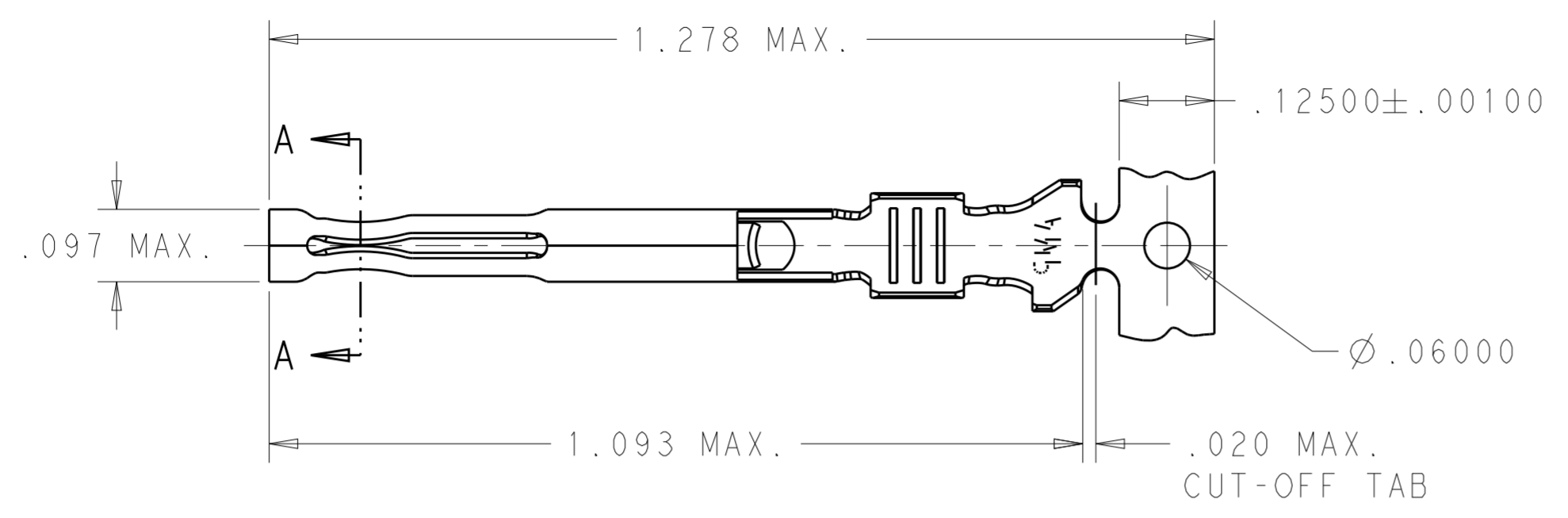
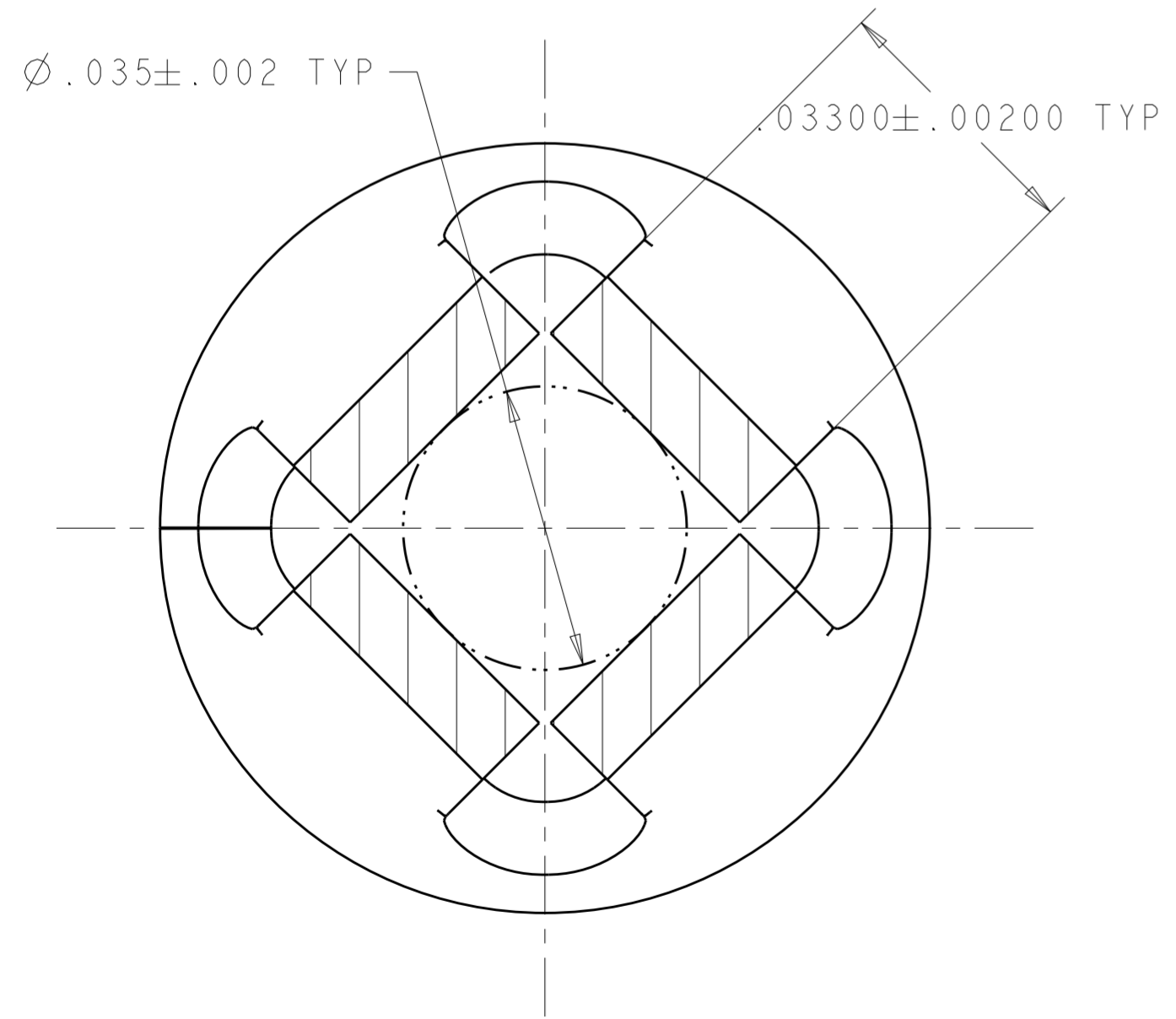


THIS DRAWING IS UNPUBLISHED. RELEASED FOR PUBLICATION 2012
 © COPYRIGHT 2012 BY TE CONNECTIVITY ALL RIGHTS RESERVED.

LOC	DIST	REVISIONS					
GE	00	P	LTR	DESCRIPTION	DATE	DWN	APVD
		S		REV PER ECO-12-013239	07JUL2012	RGV	DCS
		T		REV PER ECO-17-005979	27APR2017	JM	DS



SECTION B-B



SECTION A-A
SCALE 50:1

1. PLATE OVER ALL WITH .000050 MIN NICKEL, THEN STRIPE MATING AREA WITH .000030 MIN GOLD, THEN GOLD FLASH OVERALL.
2. WIRE RANGE: 18-16 AWG.
3. INSULATION RANGE: .098-.120 DIA.
4. DIE FEED: .450 ± .003.
5. CONTACT SUPPLIED ON REELS FOR MINI-APPLICATOR.
6. CUMMINS ELECTRONICS MUST BE INFORMED BY WAY OF A PRODUCT CHANGED IDENTIFICATION OF ALL CHANGES TO THE TE CUSTOMER DRAWINGS.
7. RECOMMENDED MATING PIN DIAMETER IS .040 ± .001 AS USED ON 212241 ASSEMBLY.

LOOSE PIECE OF 66773-2	66773-3
AS SHOWN	66773-2
MATERIAL	PART NO

THIS DRAWING IS A CONTROLLED DOCUMENT.		DWN R. VESTAL 29 JUN 2012	TE Connectivity NAME: SOCKET CONTACT, ECMSC SIZE: A2 CAGE CODE: 00779 DRAWING NO: 66773 RESTRICTED TO: -	
DIMENSIONS: inch		CHK D. STRAUSSER 29 JUN 2012		
TOLERANCES UNLESS OTHERWISE SPECIFIED:		APVD D. STRAUSSER 29 JUN 2012		
0 PLC ± 1 PLC ± 2 PLC ± 3 PLC ±.005 4 PLC ± ANGLES ± FINISH		PRODUCT SPEC - APPLICATION SPEC 114-2125 WEIGHT -		
MATERIAL COPPER ALLOY	FINISH 1	CUSTOMER DRAWING	SCALE 5:1	SHEET 1 OF 1

单击下面可查看定价，库存，交付和生命周期等信息

[>>TE Connectivity\(泰科\)](#)