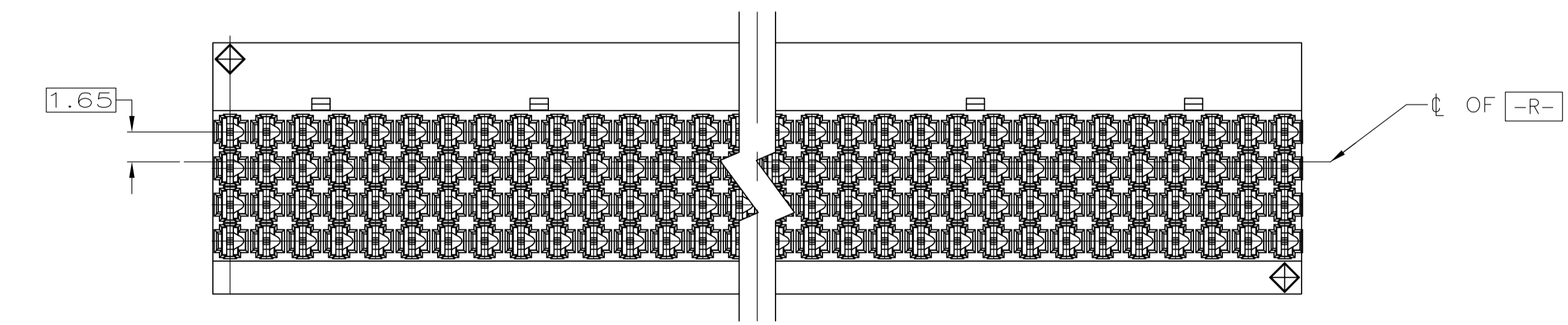
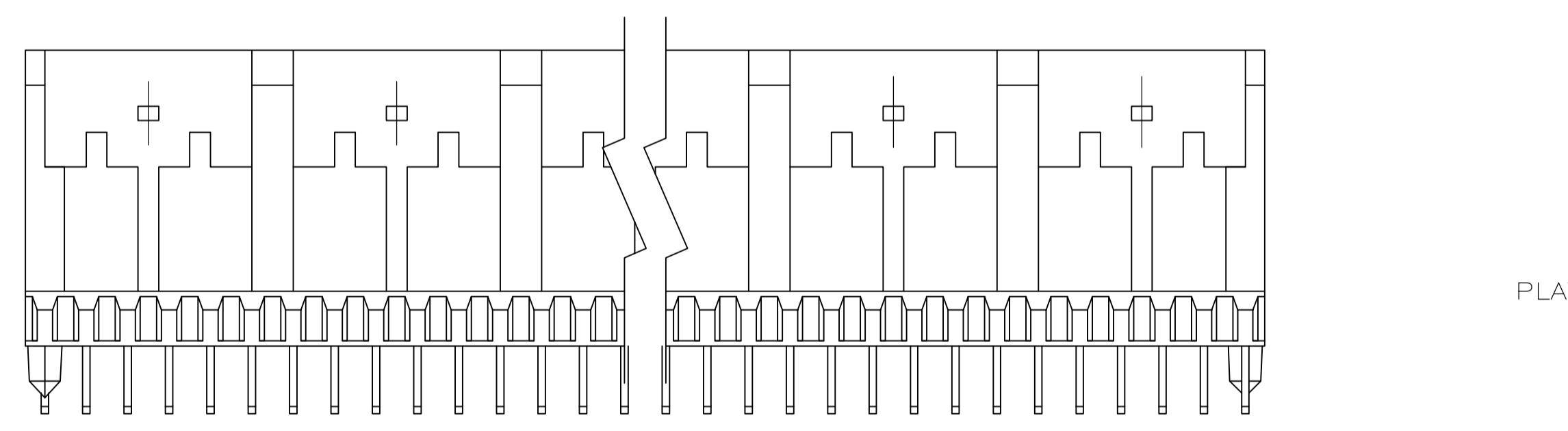
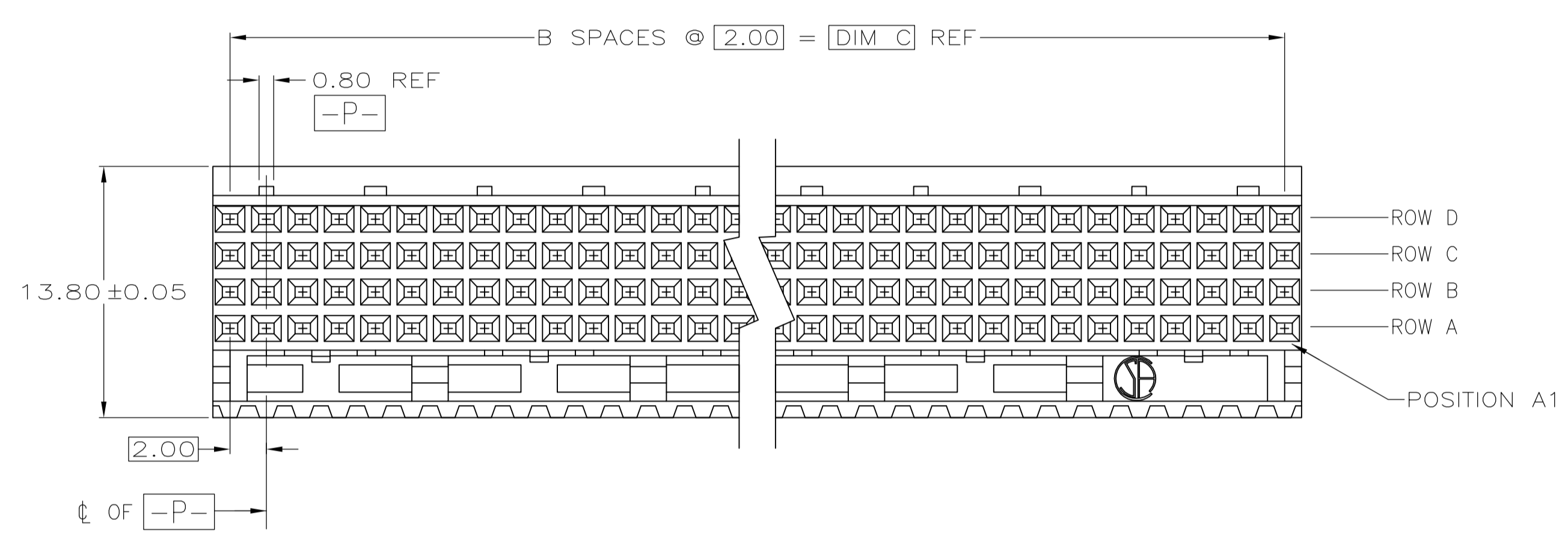
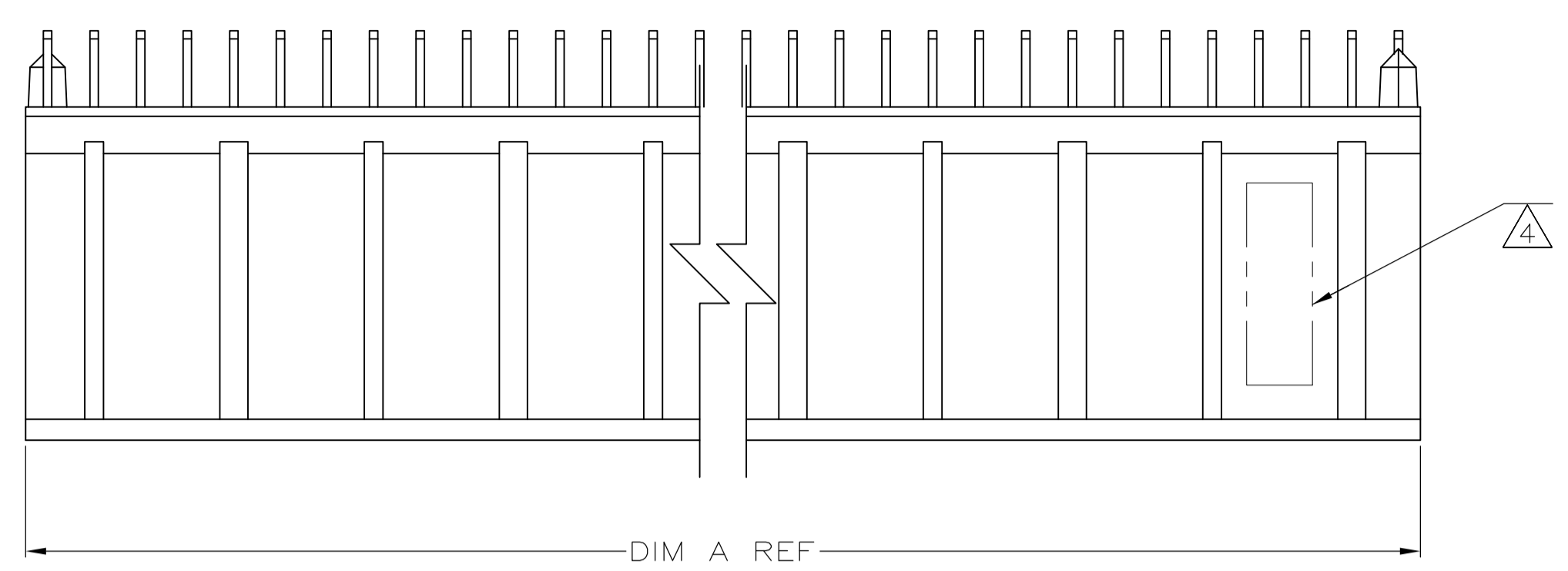
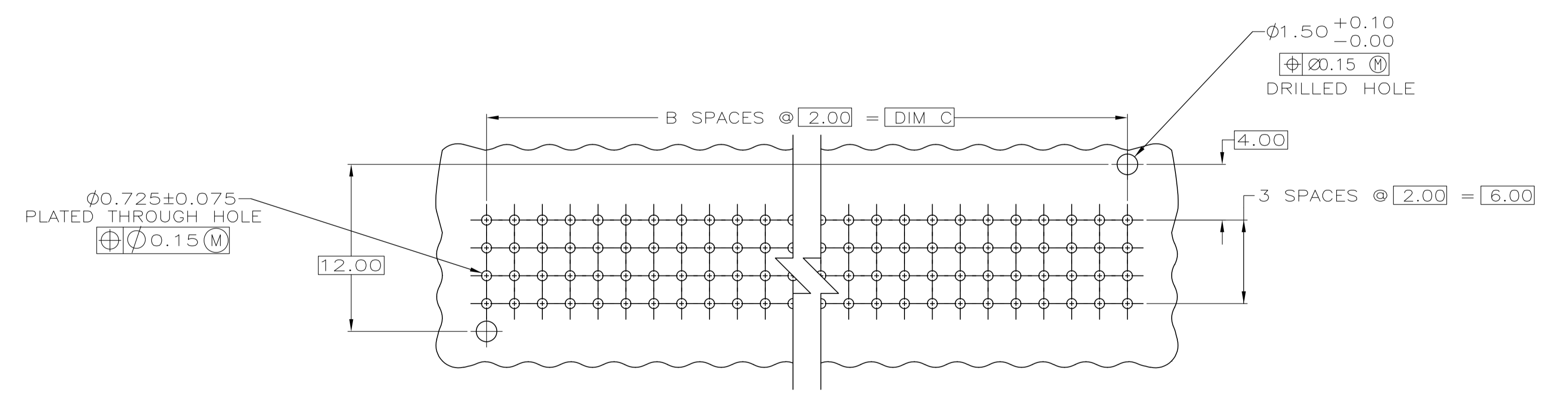
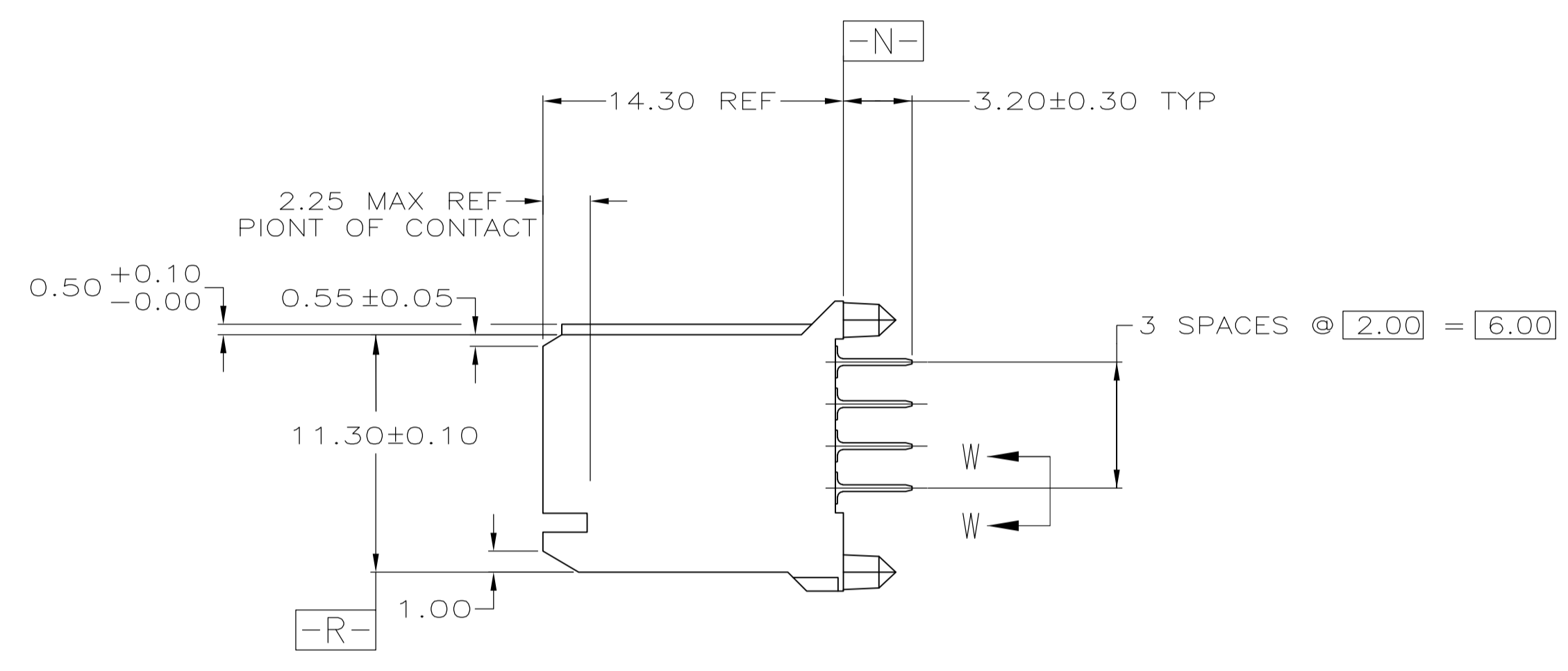


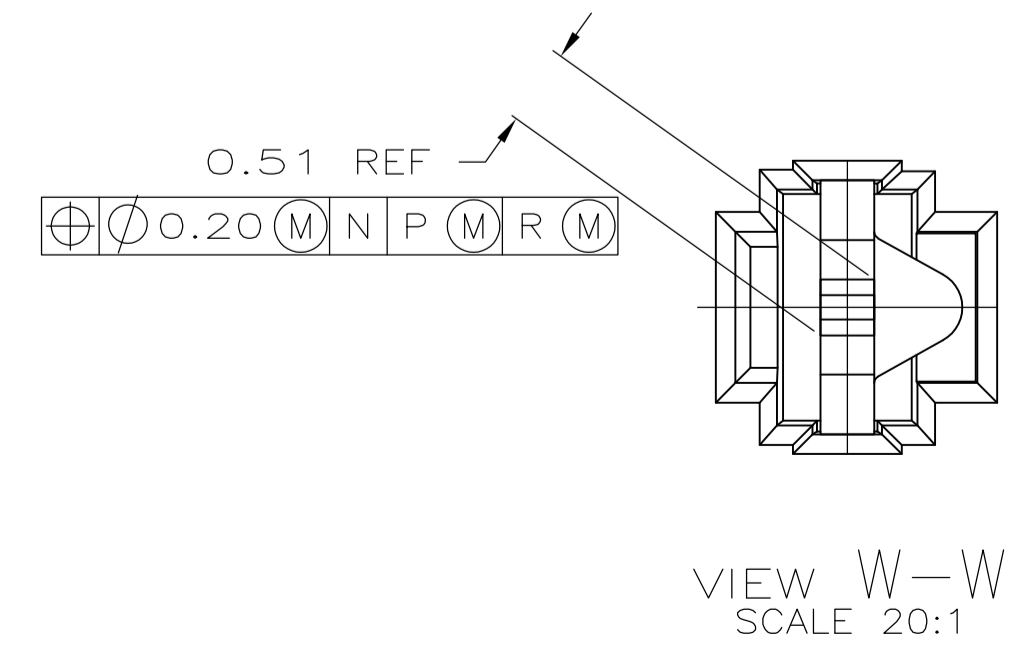
| LOC | | DIST | | REVISIONS | | | |
|-----|----|---------------------------|---------|-----------|------|------|--|
| AD | 00 | REV | DATE | BY | CHKD | APVD | |
| 01 | | REVISED PER ECO-06-006293 | 16MAR06 | JDP | RW | | |
| 02 | | REVISED PER ECO-09-024606 | 31OCT09 | KK | AEG | | |



- △ HOUSING MATERIAL: LIQUID CRYSTAL POLYMER. COLOR: NATURAL
- △ CONTACT MATERIAL: PHOSPHOR-BRONZE
- △ CONTACT FINISH:(A)
 UNDERPLATE (ENTIRE CONTACT):
 0.00127 MIN NICKEL PER SAE-AMS-QQ-N-290
 ON MATING SURFACES:
 CONFORMS TO ALL TESTING SPECIFIED FOR TELCORDIA UNCONTROLLED ENVIRONMENT.
 ON LEADS:
 0.00381 MIN MATTE TIN PER ASTM B 545 OVER UNDERPLATE.
 LUBRICATION (MIN MATING SURFACES):
 SURFACE CONDITIONER AFTER PLATING.
- △ PART MARKING, LOCATED APPROXIMATELY AS SHOWN.
- △ OBSOLETE PARTS: OBSOLETE CIS STREAMLINING PER D.RENAUD/D.SINISI



RECOMMENDED CIRCUIT PATTERN (COMPONENT SIDE)



| | DIM C | B | DIM A | NUMBER OF SIGNAL POSITIONS | PART NUMBER |
|--------------|-------|----|-------|----------------------------|-------------|
| △ 5 OBSOLETE | 94.00 | 47 | 95.88 | 192 | 5223660-8 |
| | 82.00 | 41 | 83.88 | 168 | 5223660-7 |
| | 70.00 | 35 | 71.88 | 144 | 5223660-6 |
| △ 5 OBSOLETE | 58.00 | 29 | 59.88 | 120 | 5223660-5 |
| | 46.00 | 23 | 47.88 | 96 | 5223660-4 |
| | 34.00 | 17 | 35.88 | 72 | 5223660-3 |
| △ 5 OBSOLETE | 22.00 | 11 | 23.88 | 48 | 5223660-2 |
| | 10.00 | 5 | 11.88 | 24 | 5223660-1 |

THIS DRAWING IS A CONTROLLED DOCUMENT.

| | |
|-------------------------|--------------------------------------------------------------------------------------|
| DIN B MCMMASTER 16DEC04 | Tyco Electronics Corporation |
| CHK R WERTZ 16DEC04 | Harrisburg, PA 17105-3608 |
| APVD R WERTZ 16DEC04 | NAME ASSEMBLY, RECEPTACLE, SIGNAL, VERTICAL, 4 ROW, Z-PACK 2mm FB, WITH SOLDER LEADS |
| PRODUCT SPEC | APPLICATION SPEC |
| SIZE A1 | CAGE CODE 00779 |
| WEIGHT | DRAWING NO. 5223660 |
| CUSTOMER DRAWING | SCALE 4:1 SHEET 1 OF 1 REV 02 |

单击下面可查看定价，库存，交付和生命周期等信息

[>>TE Connectivity\(泰科\)](#)