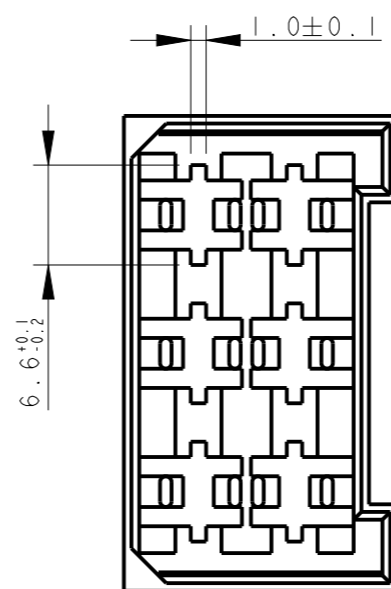
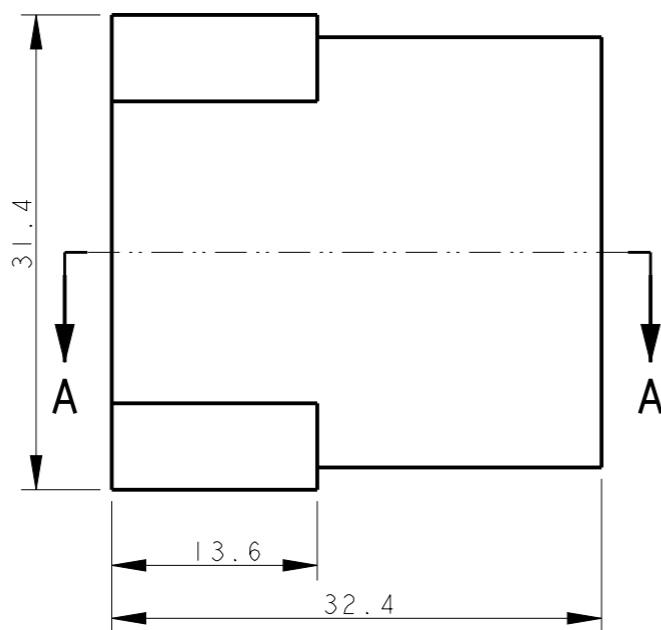
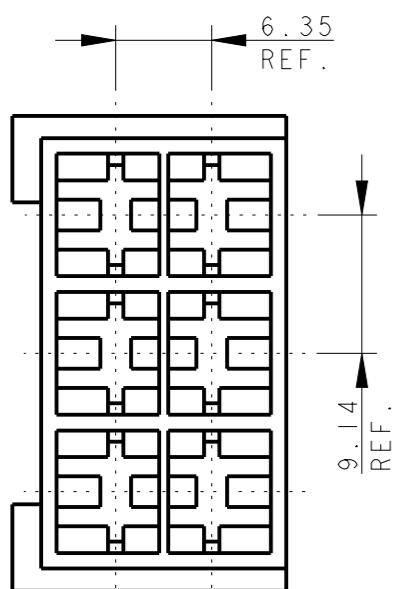


LOC IR DIST -

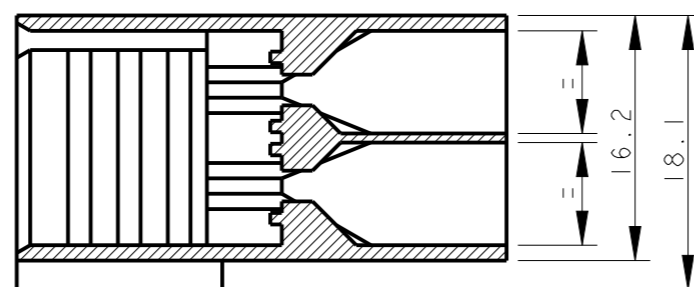
REVISIONS

P	LTR	DESCRIPTION	DATE	DWN	APVD
	AL1	REVISED PER ECO-09-026346	26NOV09	KK	AEG
	AL2	ECR-10-022530	14JUN11	KK	HMR
	AL3	PN 2-180906-0 RE-ACTIVATED	05MAR2012	PKS	RRP
	AL4	REVISED PER ECR-21-101990	19APR2021	SS	EW

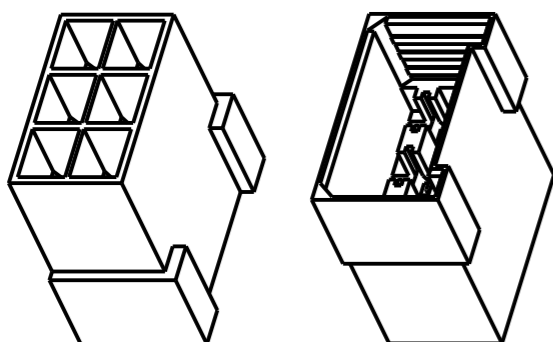


- ① PA 6.6 UNFILLED, UL 94-V2
- ② PA 6.6 UNFILLED UL 94 V0 & ACCORDING TO IEC 60335-1 NORM.
- ③ PA 6.6 20% GLASS FIBER FILLED, TECHNYL A 216 V20.
- ④ OBSOLETE PARTS: OBSOLETE CIS STREAMLINING PER D.RENAUD/D.SINISI
- 5 INTERNAL FLASH INSIDE CAVITY (THIN AND FLEXIBLE THAT DO NOT COME OFF) ACCEPTABLE UP TO 0.15 mm. EXTERNAL FLASH ACCEPTABLE UP TO 0.4 mm

SECTION A - A

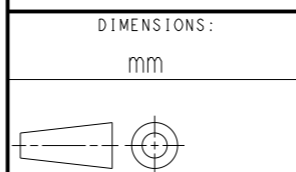


NOTE	COLOUR	MATERIAL	TE P/N	REV
④ OBSOLETE	NATURAL	①	4-180906-0	AK
	NATURAL	③	3-180906-0	AK
	NATURAL	②	2-180906-0	AL
④ OBSOLETE	ORANGE		0-180906-9	AK
	VIOLET		0-180906-8	AK
	BROWN		0-180906-6	AK
	BLACK		0-180906-5	AK
④ OBSOLETE	YELLOW	①	0-180906-4	AK
	BLUE		0-180906-3	AK
	GREEN		0-180906-2	AK
	RED		0-180906-1	AK
	NATURAL		0-180906-0	AK



SCALE 1:1

THIS DRAWING IS A CONTROLLED DOCUMENT.



MATERIAL SEE TABLE FINISH -

DIMENSIONS:	TOLERANCES UNLESS OTHERWISE SPECIFIED:
mm	
0 PLC	±-
1 PLC	±0.3
2 PLC	±-
3 PLC	±-
4 PLC	±-
ANGLES	±2°

DWN H. YAALI 18APR2006
 CHK H. YAALI
 APVD G. TURCO
 PRODUCT SPEC 108-20020
 APPLICATION SPEC -
 WEIGHT -



NAME FASTIN-FASTON Connector, 6.3 mm series TAB HOUSING 6 WAY
 SIZE A3 CAGE CODE - DRAWING NO C-180906 RESTRICTED TO -

CUSTOMER DRAWING SCALE 2:1 SHEET 1 OF 1 REV AL4

单击下面可查看定价，库存，交付和生命周期等信息

[>>TE Connectivity\(泰科\)](#)