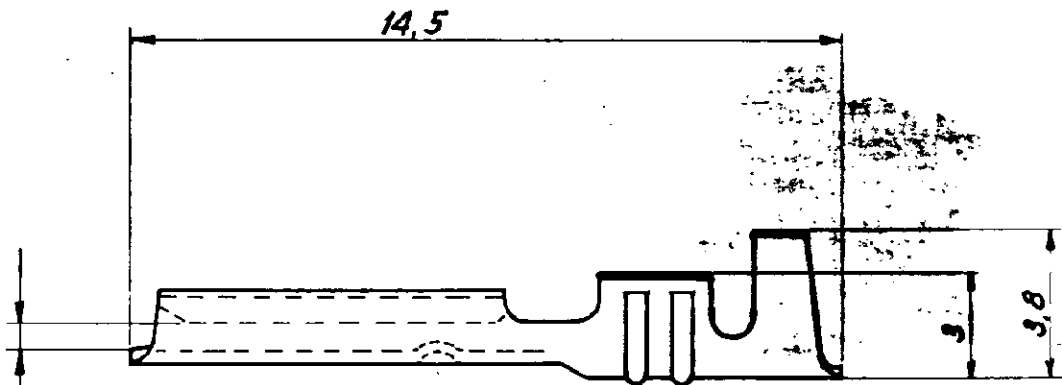
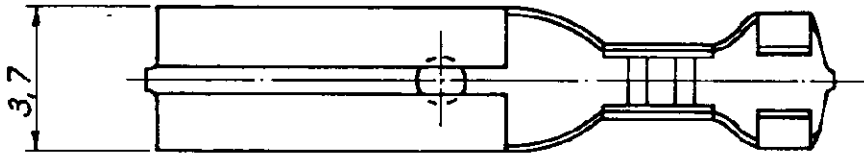


NUMBER
C-180439-441



ADATTO PER LINGUETTA DI SPESORE "A"
(VEDI TABELLA)



	DORATO	OTTONE	0,8	180439-3
	STAGNATO	OTTONE	0,5	180441-2
OBSOLETE →	NUOVO	OTTONE	0,5	180441-1
	STAGNATO	OTTONE	0,8	180439-2
OBSOLETED →	NUOVO	OTTONE	0,5	180439-1
	FINITURA	MATERIALE	"A"	AMP P/N

DIMENSIONS IN MM. DO NOT SCALE PRINT

PRINT DIST

© 1973 BY AMP INCORPORATED, ALL RIGHTS RESERVED. AMP PRODUCTS COVERED BY PATENTS AND OR PATENTS PENDING.

CUSTOMER COPY
REFERENCE ONLY

MATERIAL AND FINISH

VEDI TABELLA



AMP ITALIA
VIA CERVI 15
COLLENO (TORINO)

B OBSOLETED FOR ECR 0489-96 G.V. 4-11-96

A REVISED PER 0101-96 A.C. 2/11/73

LTR REVISION RECORD DR CHK DATE

DE 8-11-73 DE

CHK APP

WIRE RANGE INSULATION TYPE
0,5 - 1,5 mm² 1,5 - 2,8 mm

TOLERANCE EXCEPT AS NOTED
± 0,4 - 1° 0'

SCALE
1

LOC
7

NO
A

C-180439-441

REV
B

.110 SERIES FASTON RECEPTACLE

单击下面可查看定价，库存，交付和生命周期等信息

[>>TE Connectivity\(泰科\)](#)