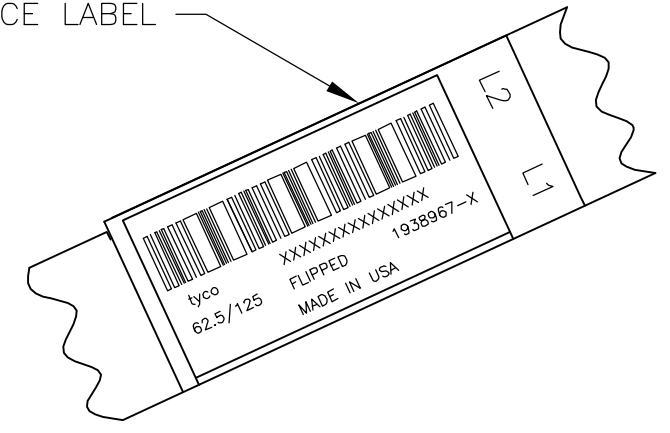
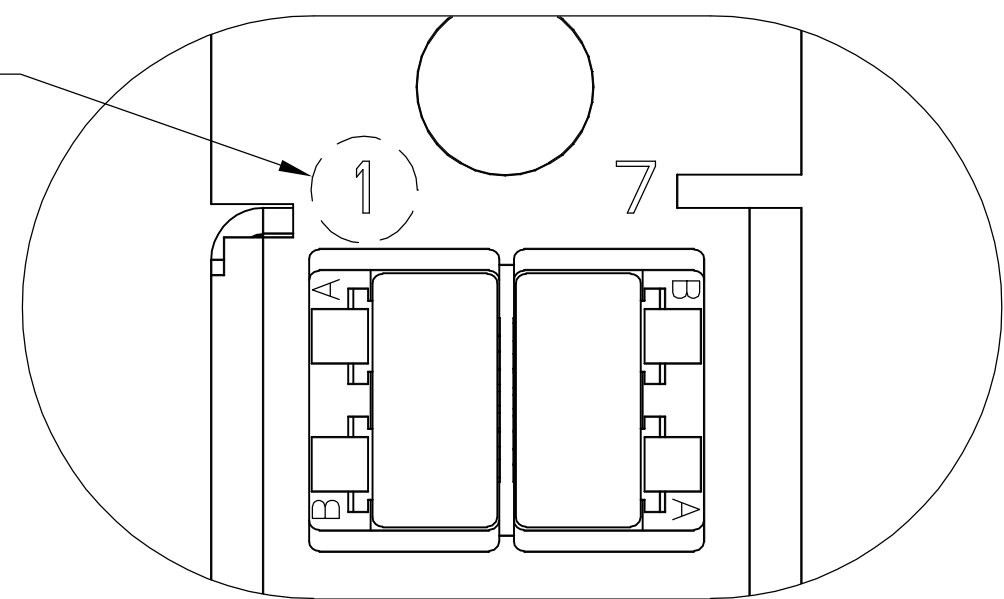
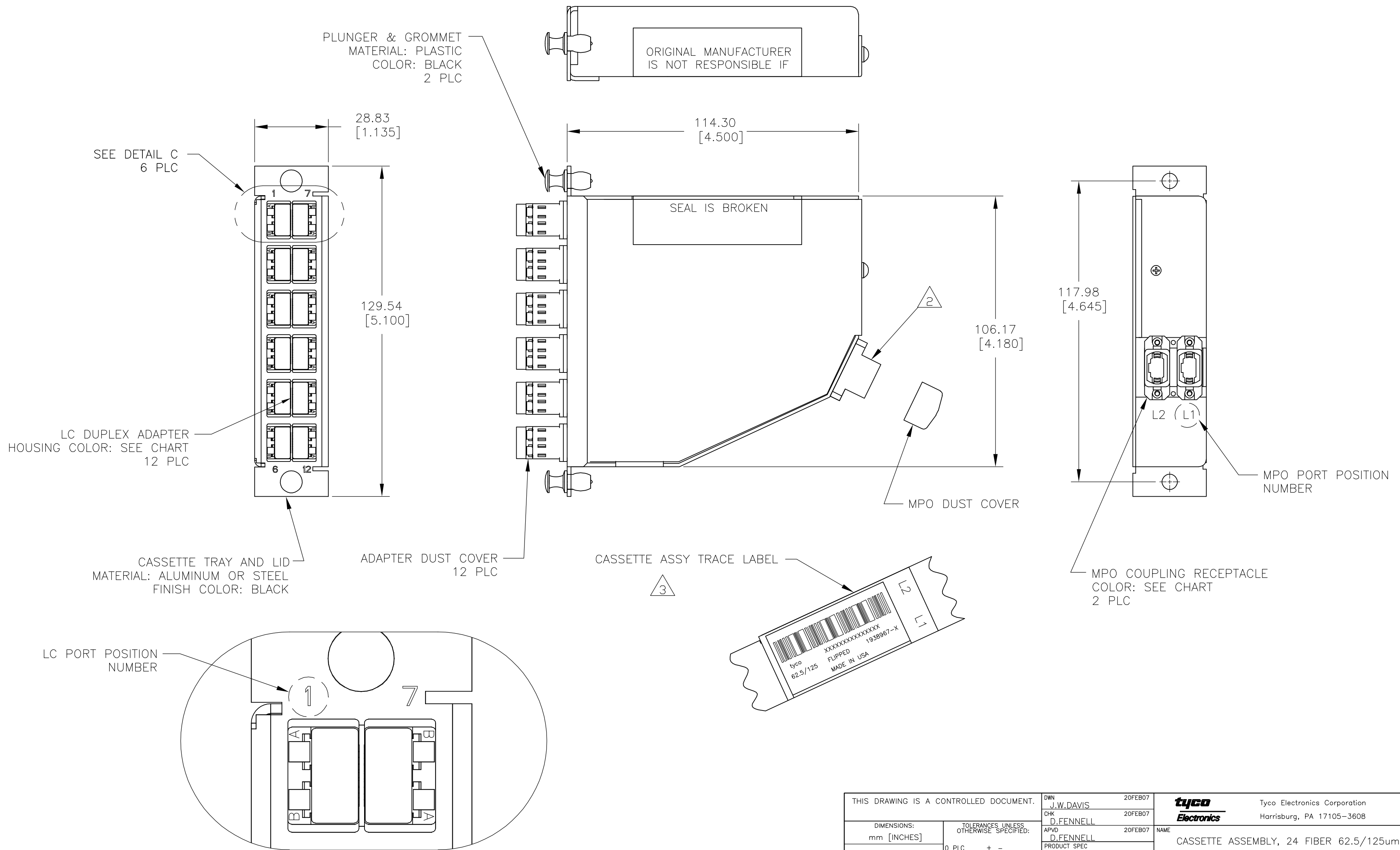


LOC	DIST	REVISIONS					
CE	16	P	LTR	DESCRIPTION	DATE	DWN	APVD
		A		RELEASED	20FEB07	JWD	DLF

D
C
B
A

D
C
B
A



THIS DRAWING IS A CONTROLLED DOCUMENT.		DWN	J.W.DAVIS	20FEB07	tyco Electronics	Tyco Electronics Corporation Harrisburg, PA 17105-3608									
DIMENSIONS: mm [INCHES]		CHK	D.FENNELL	20FEB07		NAME	CASSETTE ASSEMBLY, 24 FIBER 62.5/125um MPO - LC PAIRS FLIPPED								
TOLERANCES UNLESS OTHERWISE SPECIFIED:		APVD	D.FENNELL	20FEB07	PRODUCT SPEC	SIZE	A2	CAGE CODE	00779	DRAWING NO	C=1938967	RESTRICTED TO	-		
0 PLC ± -		APPLICATION SPEC			WEIGHT					SCALE	NTS	SHEET	1 of 2	REV	A
1 PLC ± -															
2 PLC ± -															
3 PLC ± -															
4 PLC ± -															
ANGLES ± -															
FINISH -															
		CUSTOMER DRAWING													

THIS DRAWING IS UNPUBLISHED. RELEASED FOR PUBLICATION
 © COPYRIGHT BY TYCO ELECTRONICS CORPORATION. ALL RIGHTS RESERVED.

LOC	DIST	REVISIONS			
P	LTR	DESCRIPTION	DATE	DWN	APVD
CE	16	SEE SHEET 1	-	-	-

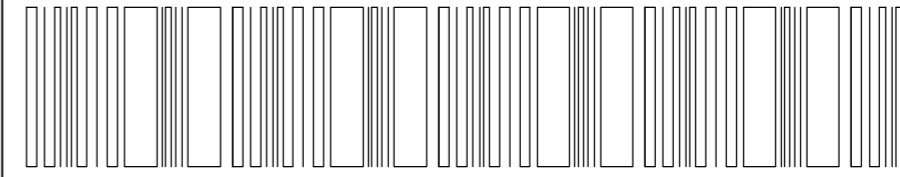
1. MAXIMUM CASSETTE ASSEMBLY LOSS: 1.25dB.

2. WHITE MARKING ON MPO TO BE FACING TOWARD TOP OF CONNECTOR MODULE. WHITE MARK INDICATES FIBER 1 SIDE

3. SEE TRACE LABEL DETAIL

4. A COPY OF CASSETTE ASSEMBLY LOSS TEST DATA WILL BE PLACED INSIDE OR WITH THE UNIT PACKAGE. CASSETTES WILL BE TESTED AT 1300nm WAVELENGTH.

5. PRODUCT AND PROCESSING MUST MEET REQUIREMENTS OF TYCO ELECTRONICS STANDARD 230-702

tyco XXXXXXXXXXXXXXXX
 62.5/125um FLIPPED 1938967-X
 MADE IN USA

FIBER PATH – PAIRS FLIPPED

MPO L1 PORT POSITION NO	MPO L2 PORT POSITION NO	LC PORT POSITION NO
1	-	1A
2	-	1B
3	-	2A
4	-	2B
5	-	3A
6	-	3B
7	-	4A
8	-	4B
9	-	5A
10	-	5B
11	-	6A
12	-	6B
-	1	7A
-	2	7B
-	3	8A
-	4	8B
-	5	9A
-	6	9B
-	7	10A
-	8	10B
-	9	11A
-	10	11B
-	11	12A
-	12	12B

BLACK STANDARD	AQUA SECURE	1-1938967-1
BLACK STANDARD	SLATE SECURE	1-1938967-0
BLACK STANDARD	ROSE SECURE	1938967-9
BLACK STANDARD	VIOLET SECURE	1938967-8
BLACK STANDARD	BROWN SECURE	1938967-7
BLACK STANDARD	ORANGE SECURE	1938967-6
BLACK STANDARD	YELLOW SECURE	1938967-5
BLACK STANDARD	BLUE SECURE	1938967-4
BLACK STANDARD	GREEN SECURE	1938967-3
BLACK STANDARD	RED SECURE	1938967-2
MPO COUPLING BUSHING COLOR & TYPE	LC ADAPTER COLOR & TYPE	PART NUMBER

THIS DRAWING IS A CONTROLLED DOCUMENT.		DWN J.W.DAVIS 20FEB07	tyco Tyco Electronics Corporation	
DIMENSIONS: mm [INCHES]		CHK D.FENNELL 20FEB07	Harrisburg, PA 17105-3608	
TOLERANCES UNLESS OTHERWISE SPECIFIED:		APVD D.FENNELL 20FEB07	NAME CASSETTE ASSEMBLY, 24 FIBER 62.5/125um	
0 PLC ± -		PRODUCT SPEC	MPO - LC PAIRS FLIPPED	
1 PLC ± -		APPLICATION SPEC	SIZE A2	CAGE CODE 00779
2 PLC ± -		WEIGHT -	DRAWING NO C=1938967	RESTRICTED TO -
3 PLC ± -		CUSTOMER DRAWING	SCALE NTS	SHEET 2 of 2
4 PLC ± -				REV A
ANGLES ± -				
FINISH -				

单击下面可查看定价，库存，交付和生命周期等信息

[>>TE Connectivity\(泰科\)](#)