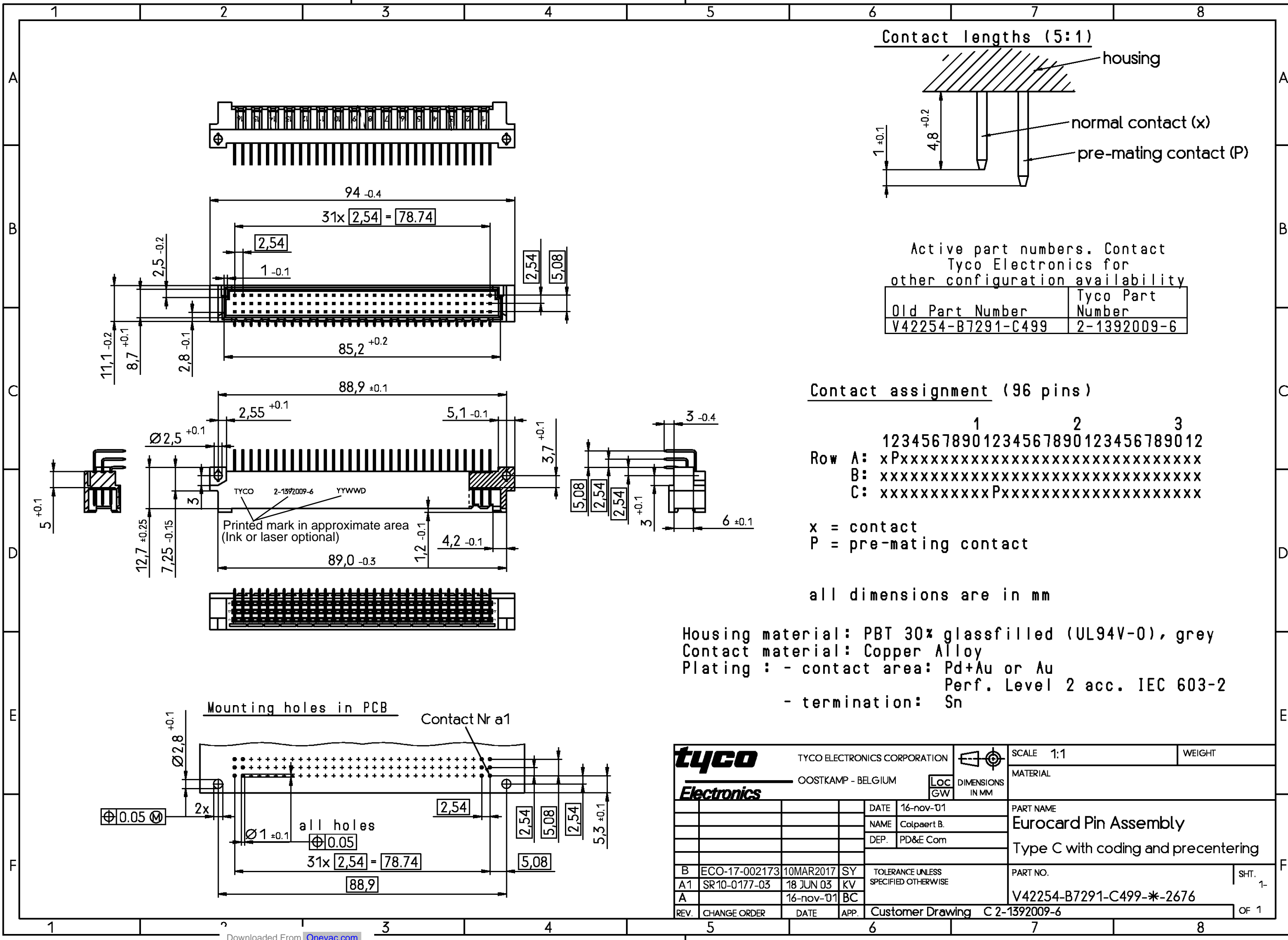


THIS INFORMATION IS CONFIDENTIAL AND PROPRIETARY TO TYCO ELECTRONICS CORPORATION AND ITS WORLDWIDE SUBSIDIARIES AND AFFILIATES. IT MAY NOT BE DISCLOSED TO ANYONE, OTHER THAN TYCO ELECTRONICS PERSONNEL, WITHOUT WRITTEN AUTHORIZATION FROM TYCO ELECTRONICS CORPORATION, HARRISBURG PENNSYLVANIA USA

PROPRIETARY:



Active part numbers. Contact Tyco Electronics for other configuration availability

Old Part Number	Tyco Part Number
V42254-B7291-C499	2-1392009-6

all dimensions are in mm

Housing material: PBT 30% glassfilled (UL94V-0), grey
 Contact material: Copper Alloy
 Plating : - contact area: Pd+Au or Au
 Perf. Level 2 acc. IEC 603-2
 - termination: Sn

tyco TYCO ELECTRONICS CORPORATION		SCALE 1:1		WEIGHT	
OOSTKAMP - BELGIUM		DIMENSIONS IN MM		MATERIAL	
DATE 16-nov-01		PART NAME		Eurocard Pin Assembly	
NAME Colpaert B.		Type C with coding and precentering		PART NO.	
DEP. PD&E Com		PART NO.		V42254-B7291-C499-*2676	
REV. CHANGE ORDER		DATE 16-nov-01		APP. BC	
Customer Drawing		C 2-1392009-6		SHT. 1- OF 1	

单击下面可查看定价，库存，交付和生命周期等信息

[>>TE Connectivity\(泰科\)](#)