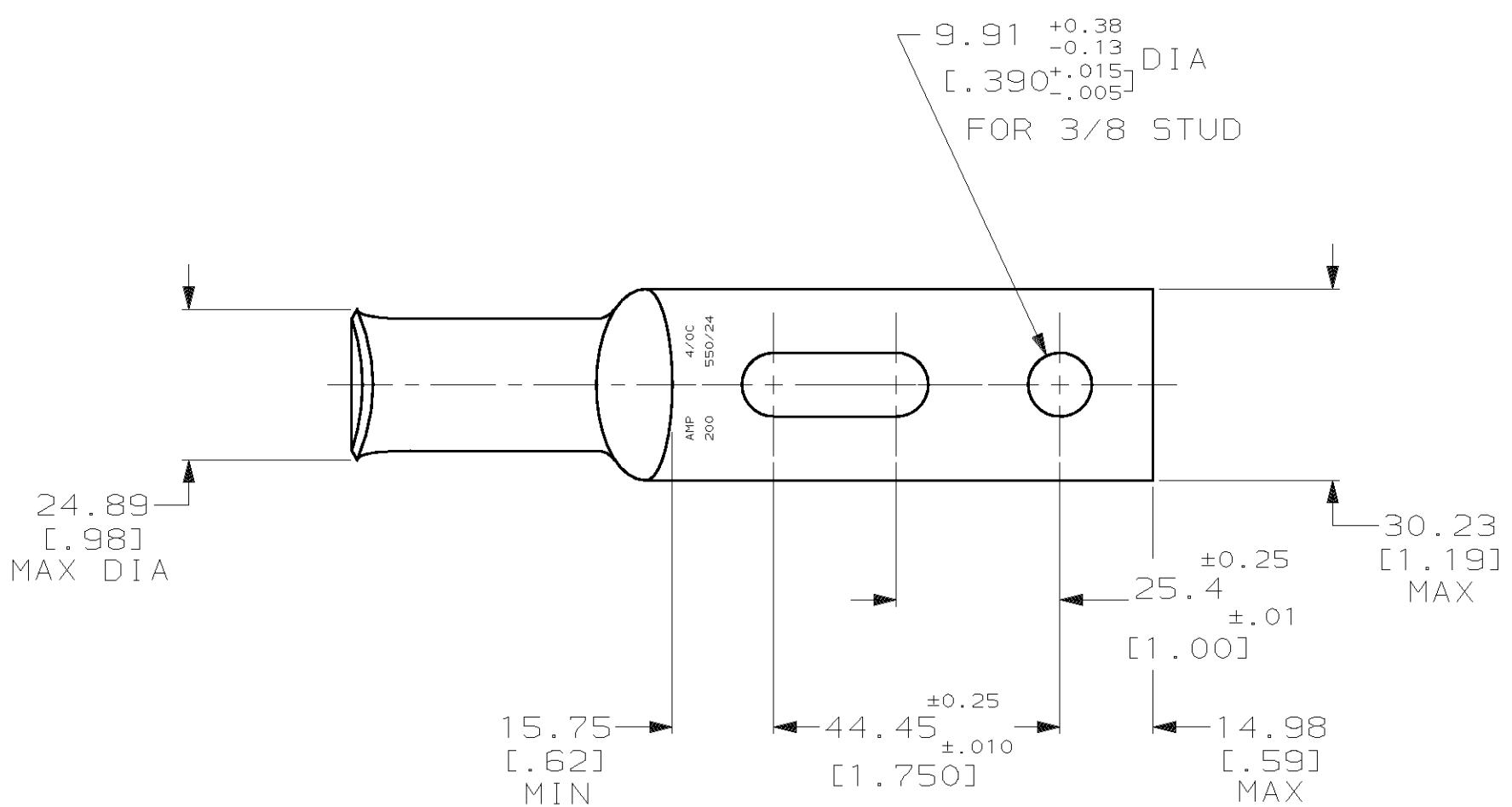
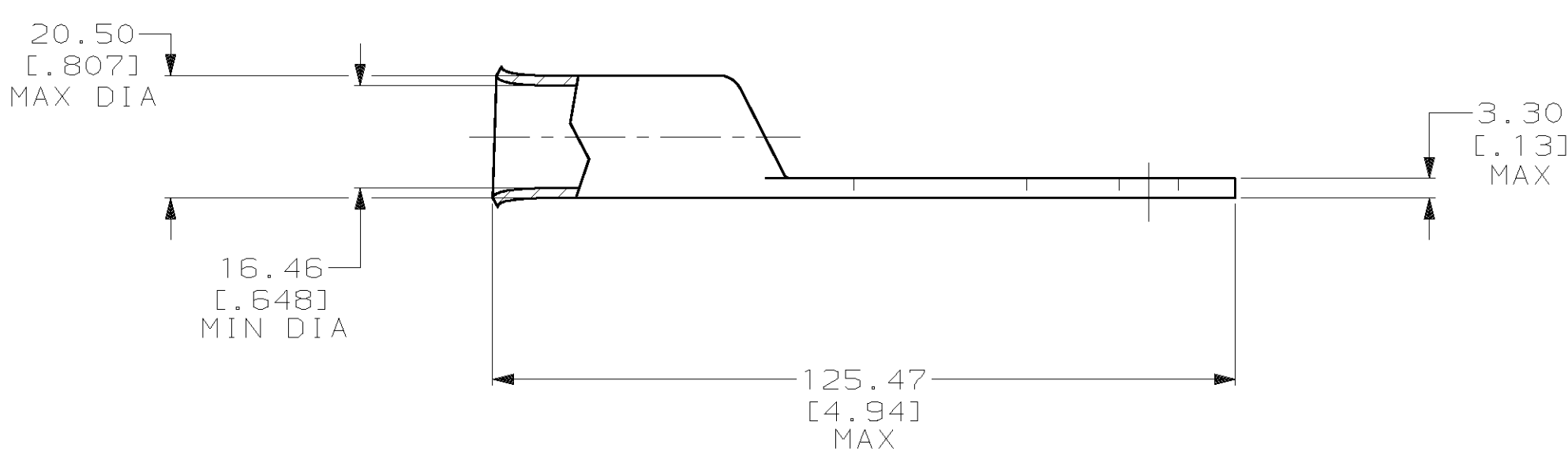


THIS DRAWING IS UNPUBLISHED. RELEASED FOR PUBLICATION, 19 .  
 © COPYRIGHT 19 BY AMP INCORPORATED. ALL INTERNATIONAL RIGHTS RESERVED.

| LOC | DIST | P | F | REVISIONS |     | DATE                 | APPD          |
|-----|------|---|---|-----------|-----|----------------------|---------------|
| G   | 86   |   |   | ZONE      | LTR | DESCRIPTION          |               |
|     |      |   |   | A         |     | REL PER 063A-0649-02 | 28OCT02 JS MS |



1 CIRCULAR MIL RANGE: 190,000-231,000 CM



THIS DRAWING IS A CONTROLLED DOCUMENT FOR AMP INCORPORATED. IT IS SUBJECT TO CHANGE AND THE CONTROLLING ENGINEERING ORGANIZATION SHOULD BE CONTACTED FOR THE LATEST REVISION.

|   |  |                           |   |                        |
|---|--|---------------------------|---|------------------------|
| DO NOT SCALE PRINT. UNLESS SPECIFIED DIMENSIONS IN mm [INCHES] TOLERANCES ON :<br>2 PLC DEC ± 0.51 [.020]<br>3 PLC DEC ± -<br>ANGLES ± -                                      |  | DR 07JUL02<br>JR RUTH     | AMP Incorporated<br>Harrisburg, PA 17105-3608 |                        |
| MATERIAL<br>COPPER ASTM B-188<br>ANNEALED   |  | CHK 07JUL02<br>MS FEHER   |   |                        |
| FINISH<br>TIN PLATE<br>0.00381 [.000150] MIN<br>THK PER MIL-T-10727   |  | APPD 07JUL02<br>MJ SPICER | APPD 07JUL02<br>MJ SPICER                     | PRODUCT SPEC<br>-      |
| THIS DRAWING IS A CONTROLLED DOCUMENT FOR AMP INCORPORATED. IT IS SUBJECT TO CHANGE AND THE CONTROLLING ENGINEERING ORGANIZATION SHOULD BE CONTACTED FOR THE LATEST REVISION. |  | APPLICATION SPEC<br>-     | WEIGHT<br>-                                   | SIZE<br>C 00779        |
|   |  |                           |   | DRAWING NO<br>C-696460 |
|   |  |                           |   | SCALE 1:1              |
|   |  |                           |   | SHEET 1 OF 1           |

单击下面可查看定价，库存，交付和生命周期等信息

[>>TE Connectivity\(泰科\)](#)