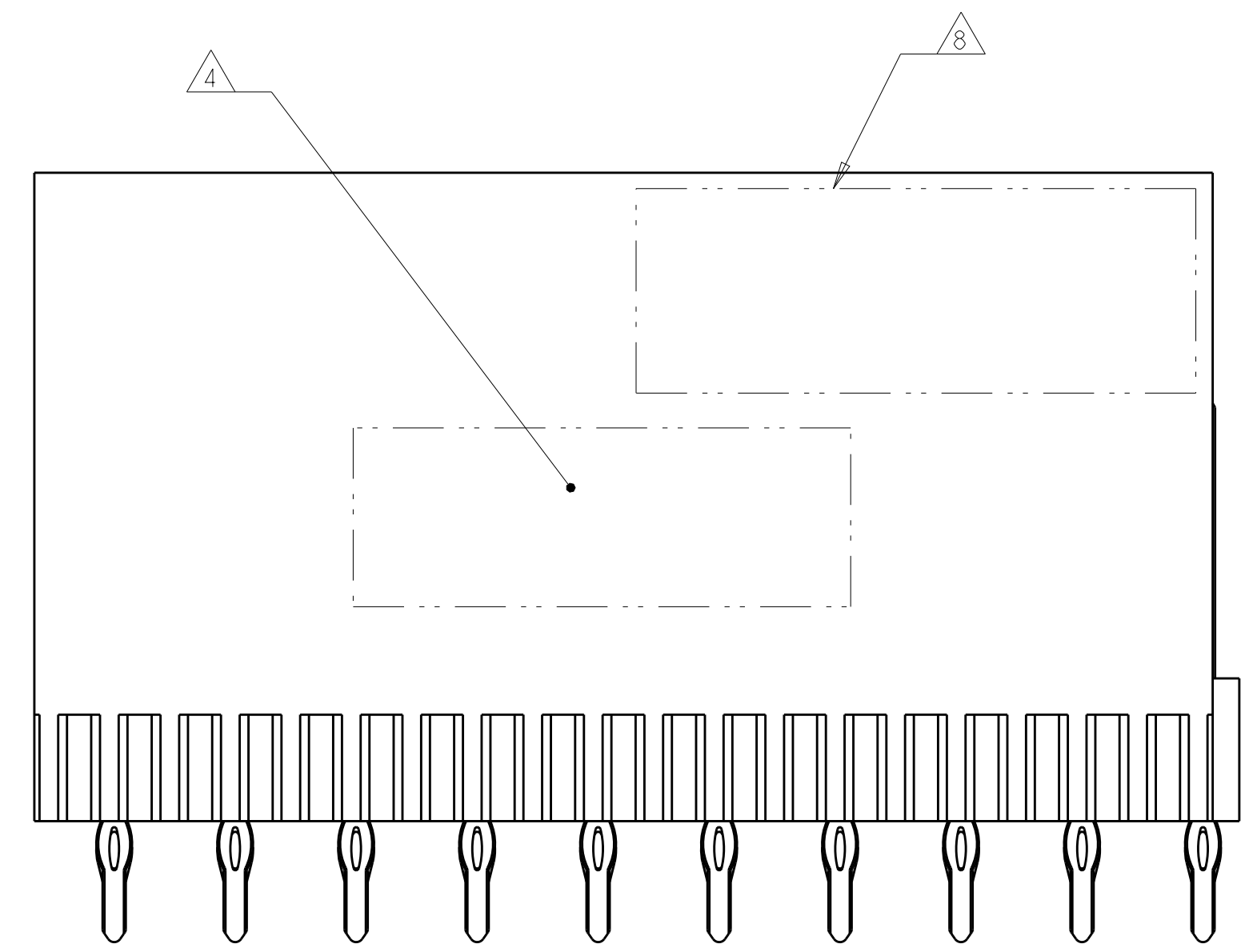
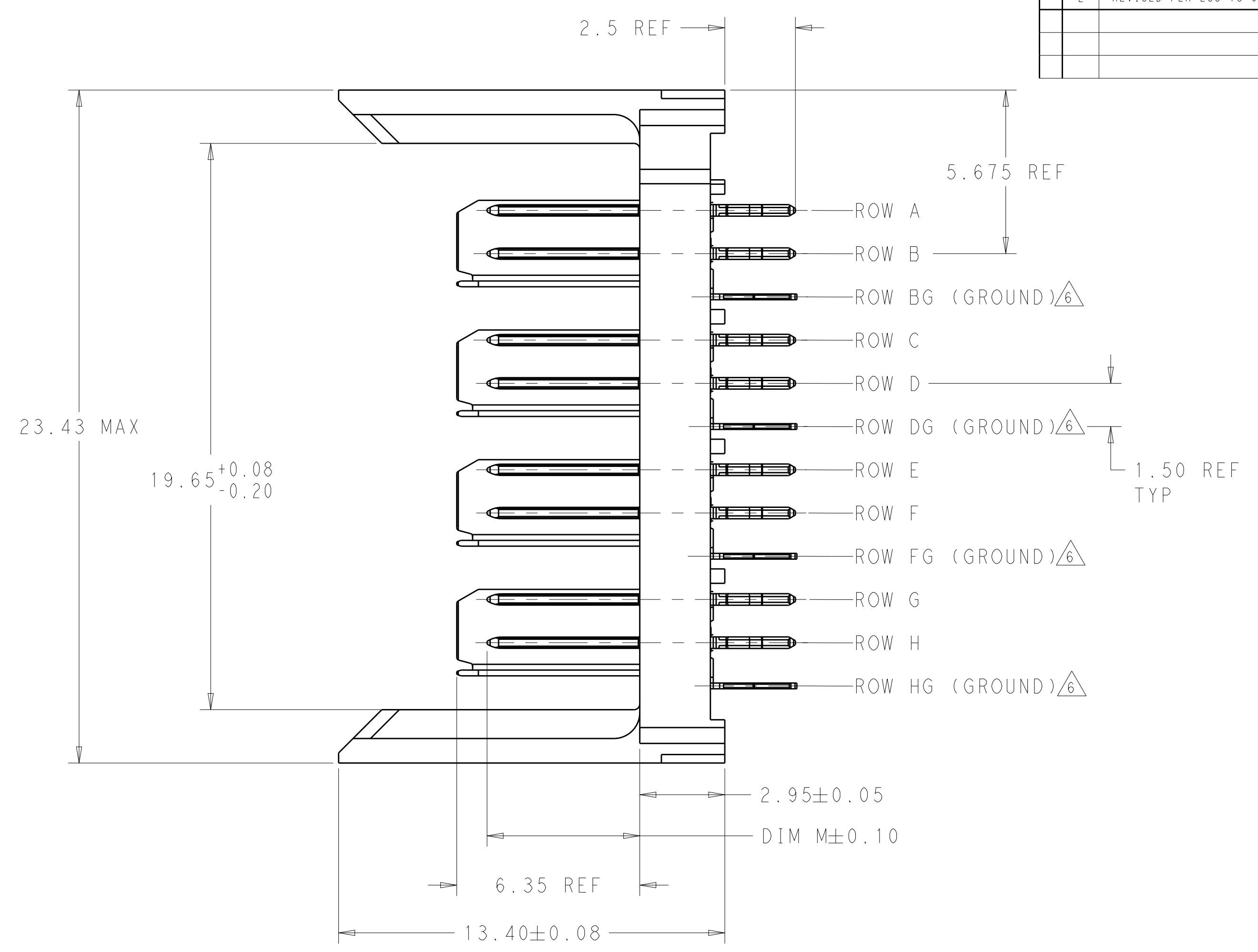
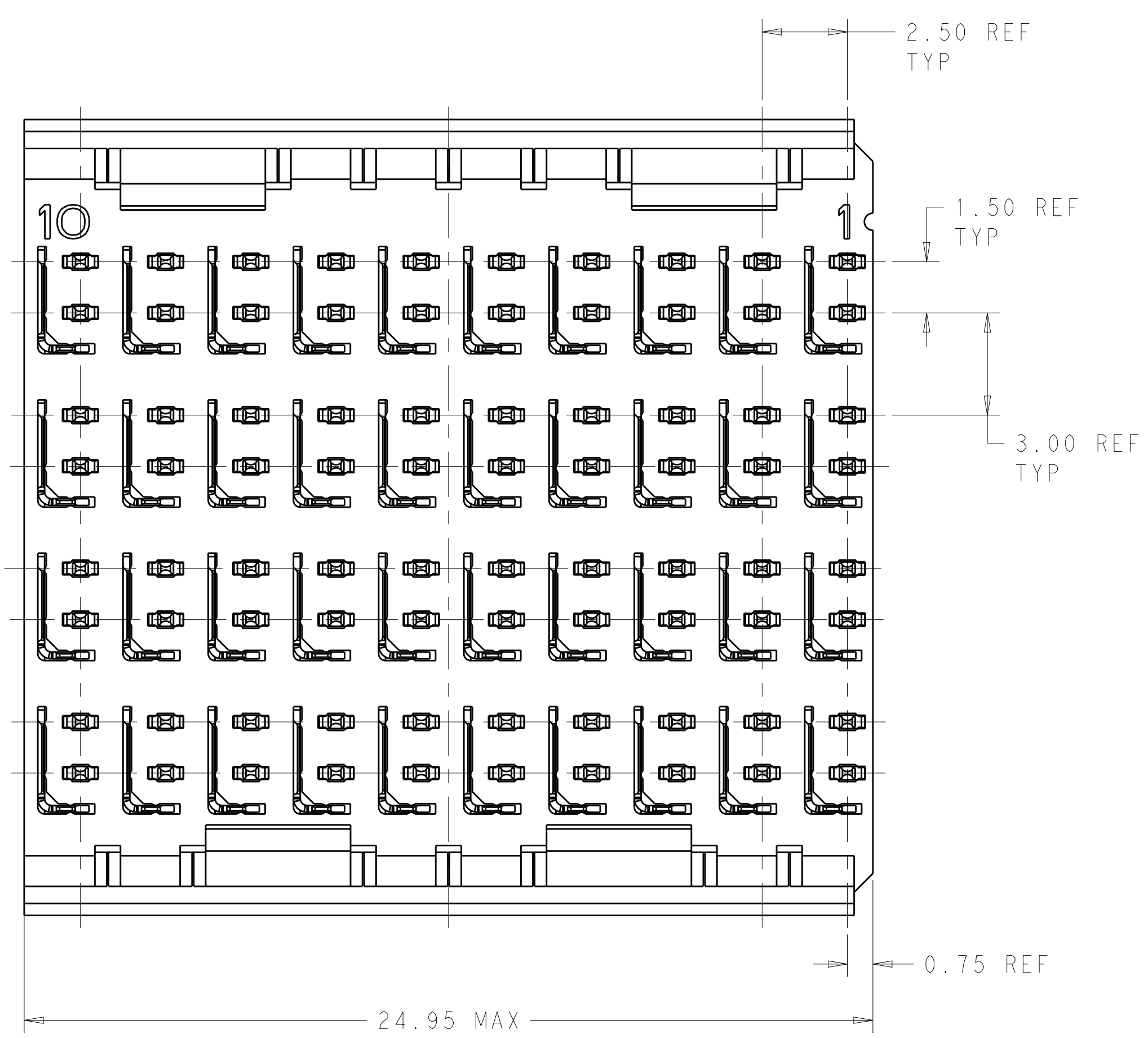


REVISIONS				
P.	LTN.	DESCRIPTION	DATE	APVD.
E		REVISED PER ECO-18-018129	09OCT2019	AP DS



⊕ ∅ 0.05 X Y
ALL PLATED THRU HOLES

RECOMMENDED PC BOARD LAYOUT, BACKPLANE, COMPONENT SIDE SHOWN
SCALE 4:1

- 1 REFERENCE APPLICATION SPEC 114-13059 FOR RECOMMENDED PLATED THRU HOLE DIAMETER AND PLATING THICKNESSES.
- 2 MATERIAL:
CONTACT AND SHIELD - PHOSPHOR BRONZE
HOUSING - GLASS FILLED POLYESTER, UL 94V-0.
- 3 FINISH: CONTACT AND SHIELD
MATING AREA-1.27 μm MIN GOLD OVER 1.27 μm MIN NICKEL
COMPLIANT PIN AREA-0.5 μm MIN TIN OVER 1.27 μm MIN NICKEL.
- 4 CONNECTOR MARKED WITH PART NUMBER AND DATE CODE.
- 5 DATUMS AND BASIC DIMENSIONS ESTABLISHED BY CUSTOMER.
- 6 THE FOUR GROUNDS IN EACH COLUMN ARE COMMONED.
- 7. CONTACT AREA LUBRICATED WITH BELLCORE APPROVED LUBRICANT. TECHNICAL REFERENCE: GR-1217-CORE, ISSUE 1, NOVEMBER 1995.
- 8 TE OR TE CONNECTIVITY LOGO IS LOCATED.

5.30	6469628-1
DIM M	PART NUMBER

THIS DRAWING IS A CONTROLLED DOCUMENT.		OWN: D. HUMBERT 30MAR2010	
DIMENSIONS: mm		CHK: J. EARY	
TOLERANCES UNLESS OTHERWISE SPECIFIED:		APVD: -	NAME: HEADER ASSEMBLY, 4 PAIR, 2.5mm TAIL, 25mm HMZd
0 PLC	±	PRODUCT SPEC	APPLICATION SPEC
1 PLC	±0.1	SIZE	CAGE CODE DRAWING NO
2 PLC	±0.01	WEIGHT	RESTRICTED TO
3 PLC	±0.001	A 00779 C=6469628	
4 PLC	±0.0001	CUSTOMER DRAWING	
ANGLES	±	SCALE 8:1 SHEET 1 OF 1 REV E	

单击下面可查看定价，库存，交付和生命周期等信息

[>>TE Connectivity\(泰科\)](#)