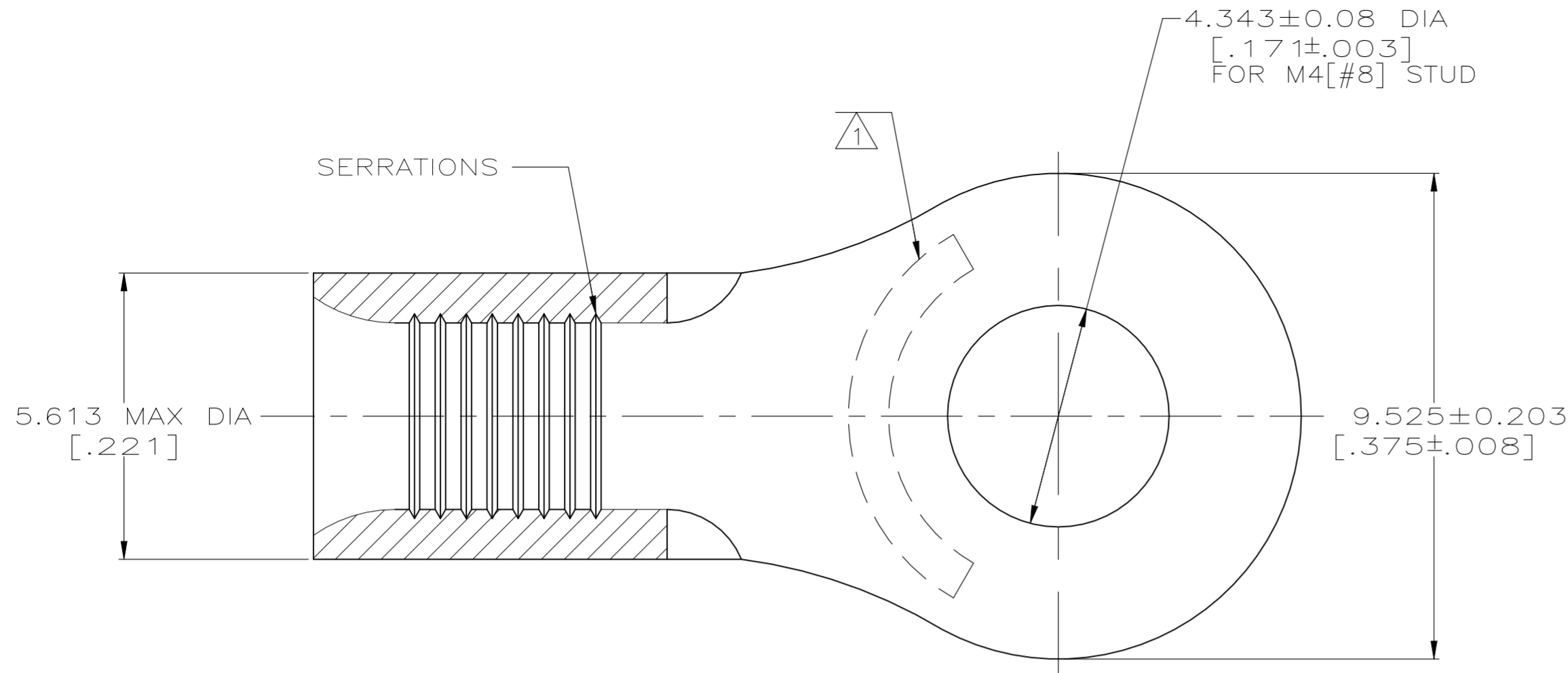
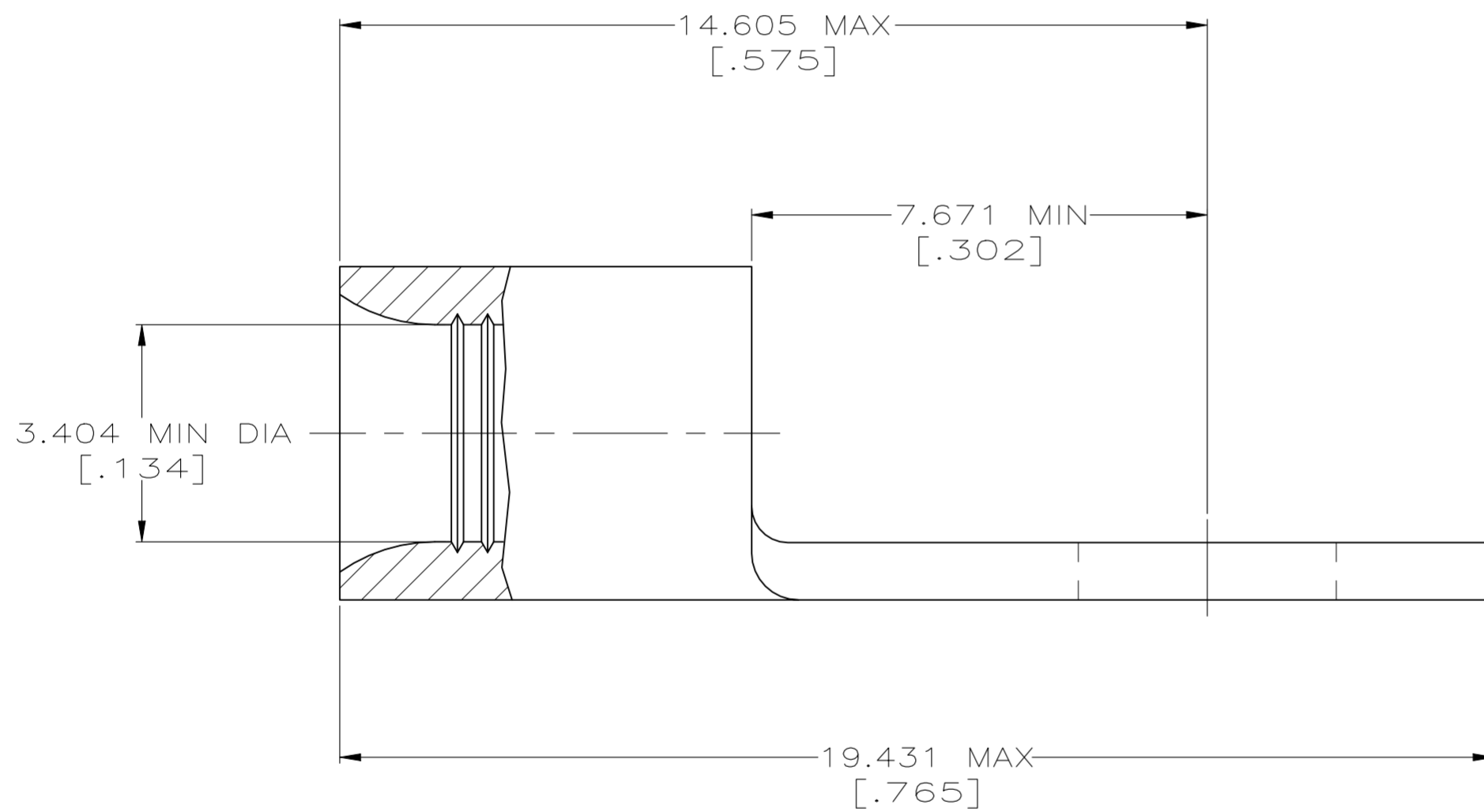


REVISIONS					
P	LTR	DESCRIPTION	DAP	DATE	APVD
	H1	ECO-21-005853		18MAY2021	RK DR



<b>AMP</b> WIRE RANGE	E13288 Listed
12-10 AWG STRANDED	12-10 AWG STRANDED

- 1 STAMP AMP 12-10\* APPROX AS SHOWN
- 2 MATERIAL THICKNESS: 0.991±0.051 [.039±.002]
- 3 MATERIAL: COPPER PER ASTM B152
- 4 FINISH: TIN PLATE 0.00254 [.000100] MIN EXT THK PER ASTM B545



<b>AMP INCORPORATED</b> CUSTOMER SERVICE SYSTEMS		MAX RECOMMENDED OPERATING TEMPERATURE: 170° C [338° F] MAX
FOR ADDITIONAL PRODUCT INFORMATION OR COPIES OF DRAWINGS AND TECHNICAL DOCUMENTS	PRODUCT INFORMATION CENTER 1-800-522-6752	VOLTAGE RATING: NOT APPLICABLE
FOR APPLICATION TOOLING INFORMATION	TOOLING ASSISTANCE CENTER 1-800-722-1111	WIRE CROSS SECTIONAL AREA RANGE: 2.62-6.64mm <sup>2</sup> [5,180-13,100] CIR MILS STRANDED
FOR ORDER ENTRY	1-800-526-5142	THIS DRAWING IS A CONTROLLED DOCUMENT FOR AMP INCORPORATED. IT IS SUBJECT TO CHANGE AND THE CONTROLLING ENGINEERING ORGANIZATION SHOULD BE CONTACTED FOR THE LATEST REVISION.

2500	TAPE & REEL	3-31113-2
500	LOOSE PIECE	31113
QTY	PACKAGE TYPE	PART NUMBER

THIS DRAWING IS A CONTROLLED DOCUMENT.		DWN TA BRINKMAN 2-8-93	TE Connectivity	
DIMENSIONS: MM[INCHES]		CHK DA PATTERSON 2-8-93		
TOLERANCES UNLESS OTHERWISE SPECIFIED:		APVD -	NAME -	
0 PLC ± -		PRODUCT SPEC UL 486A-B		
1 PLC ± -		APPLICATION SPEC -		
2 PLC ± -		SIZE A2	CAGE CODE 00779	DRAWING NO C-31113
3 PLC ± 0.127[.005]		RESTRICTED TO -		
4 PLC ± -		WEIGHT -		
ANGLES ± -		CUSTOMER DRAWING		
MATERIAL 3		SCALE 10:1 SHEET 1 OF 1 REV H1		
FINISH 4				

单击下面可查看定价，库存，交付和生命周期等信息

[>>TE Connectivity\(泰科\)](#)