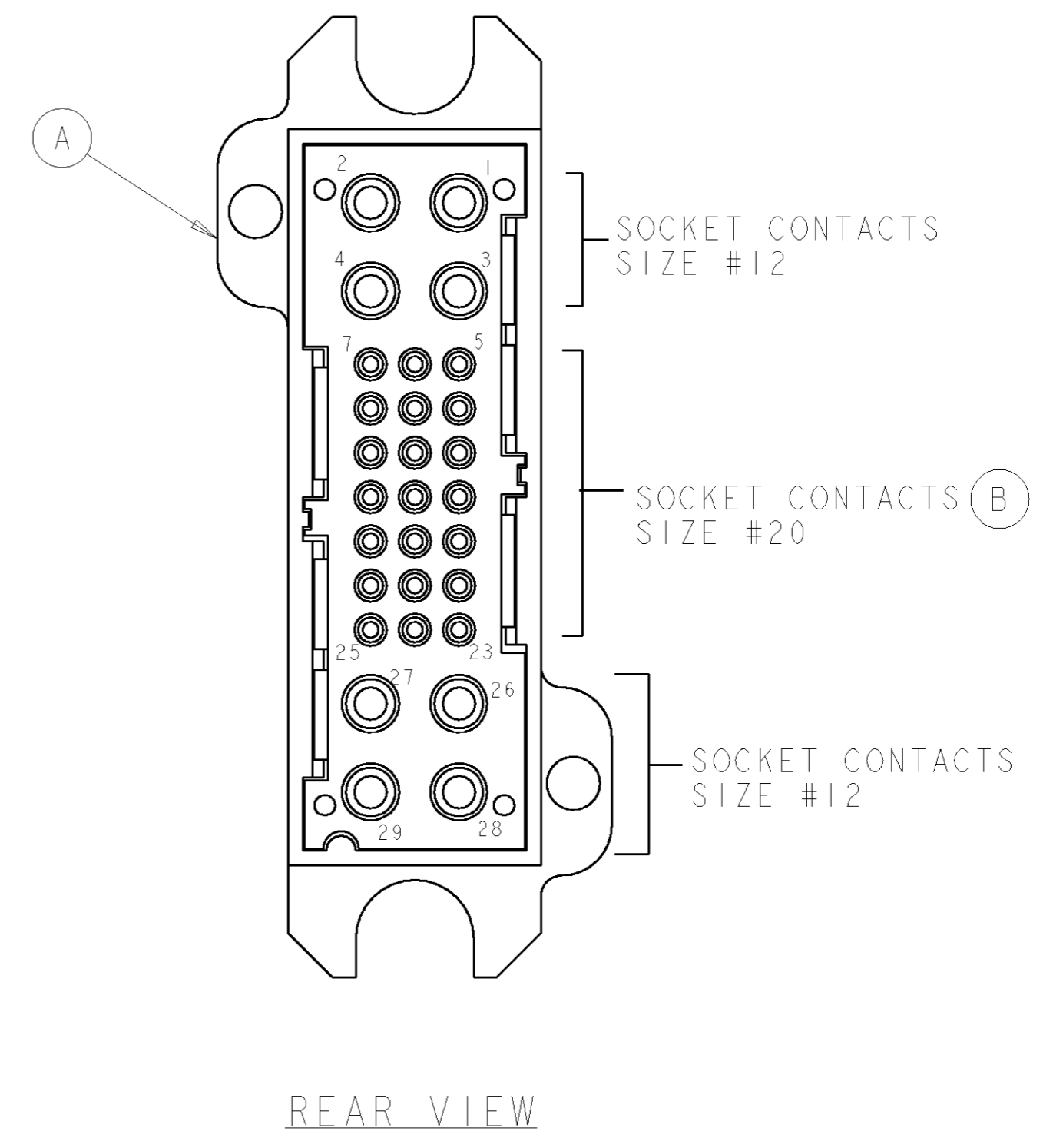
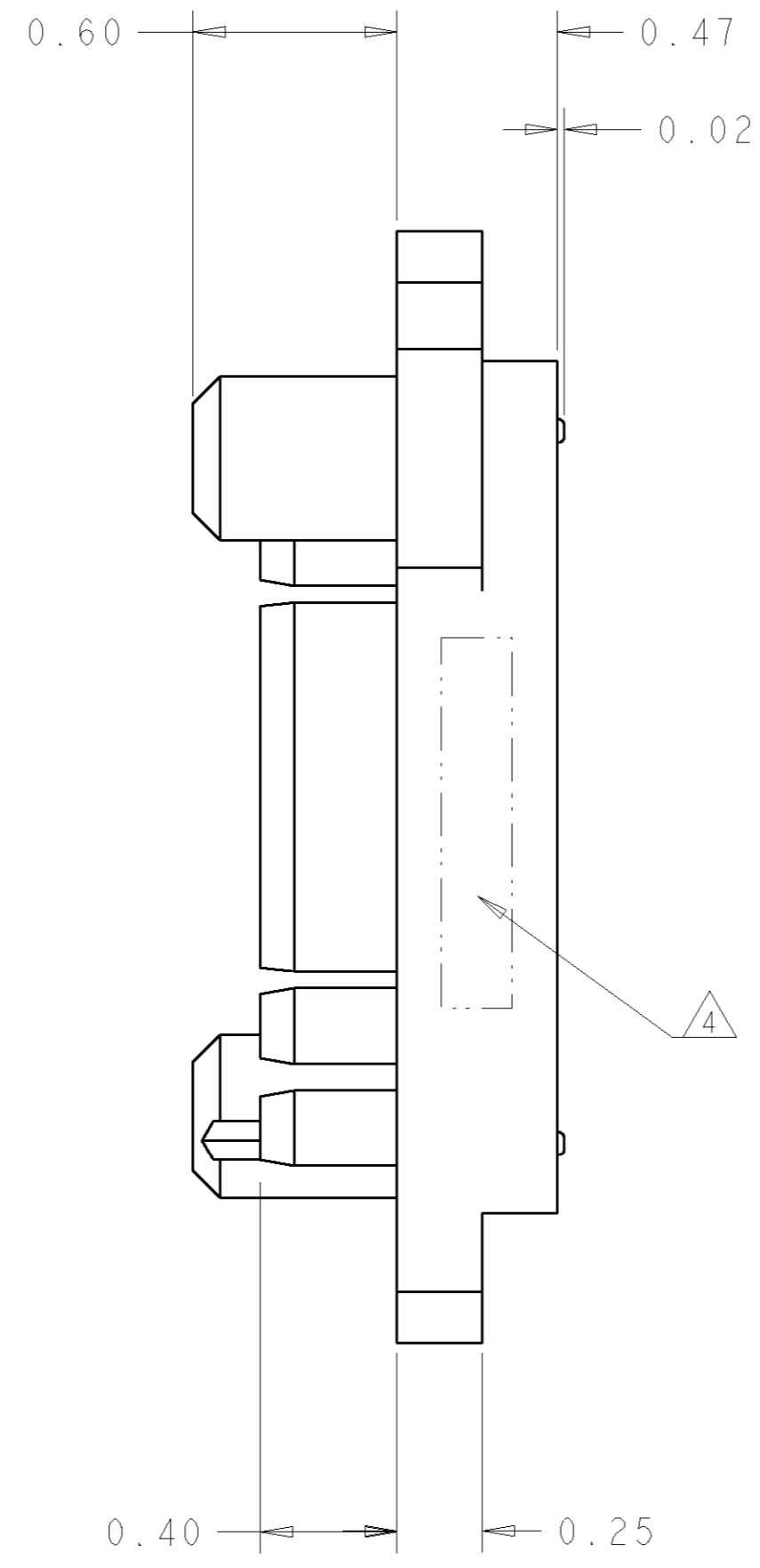
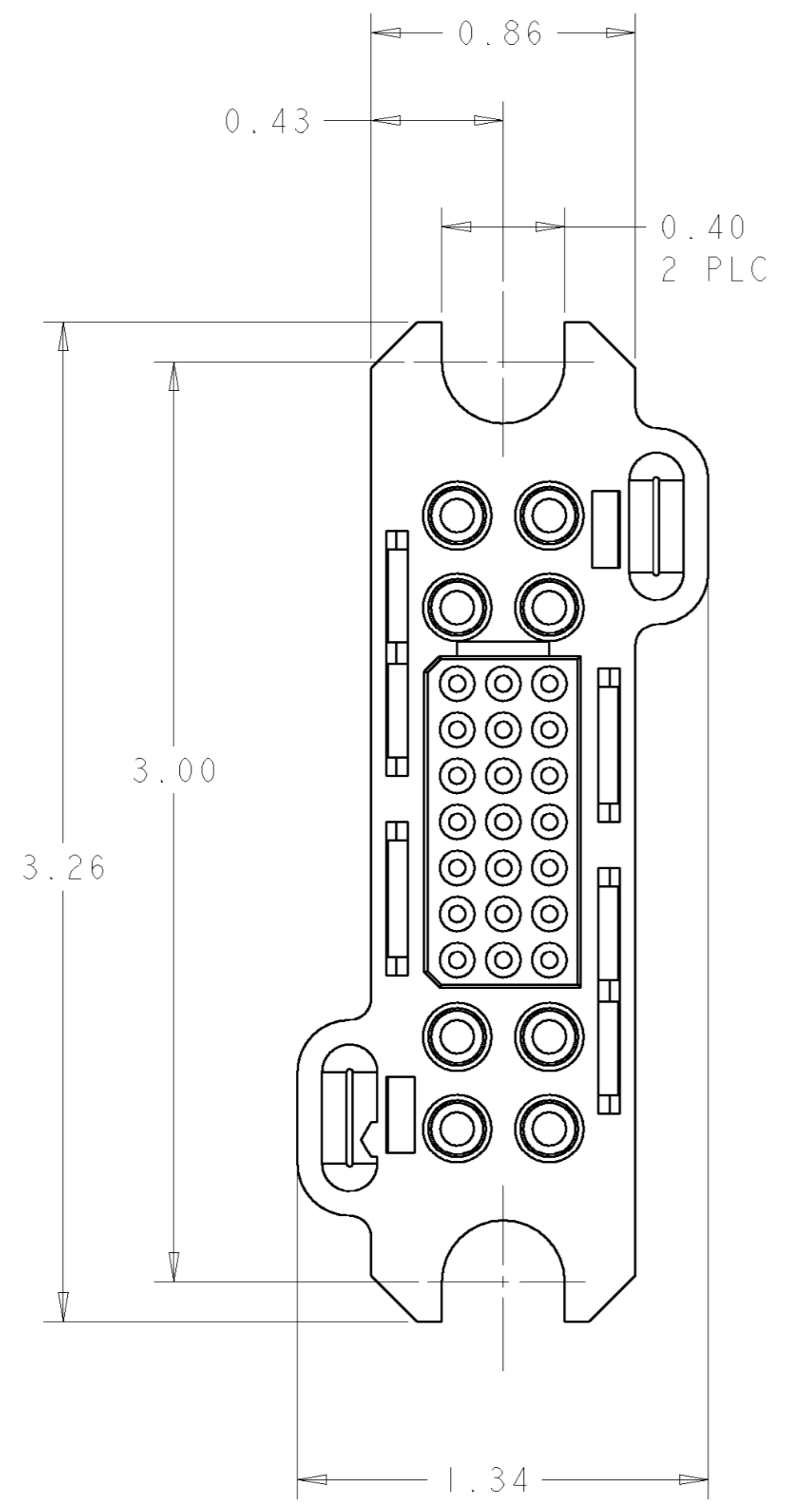


THIS DRAWING IS UNPUBLISHED. RELEASED FOR PUBLICATION 20  
 © COPYRIGHT 20 BY TYCO ELECTRONICS CORPORATION. ALL RIGHTS RESERVED.

LOC	DIST	REVISIONS			
P	LTR	DESCRIPTION	DATE	DWN	APVD
GP	00	A	RELEASED	09OCT2006	RG SF
		B	REV PER ECO-07-002066	29JAN2007	RG SF



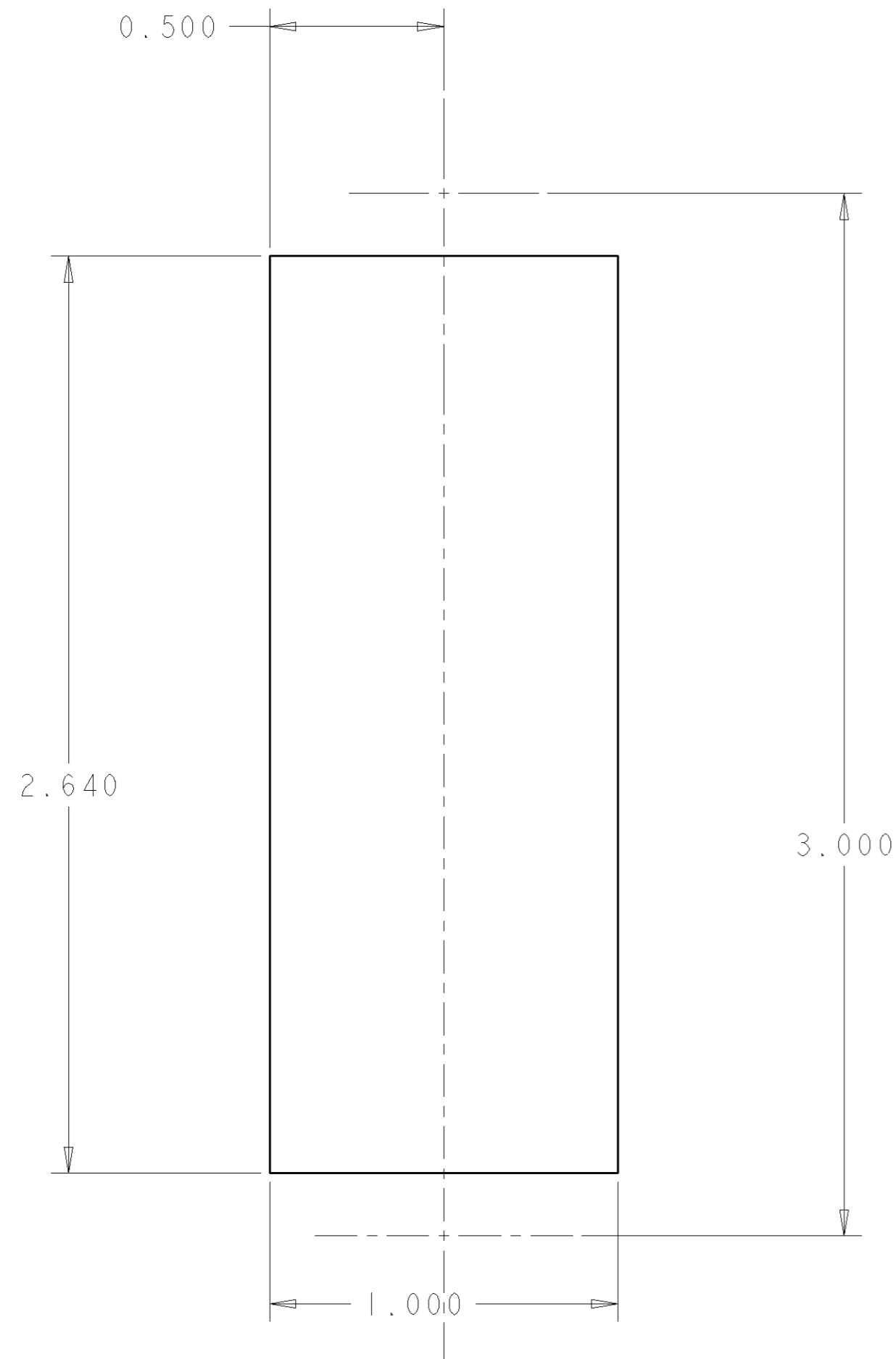
AS SHOWN	1926245-1
DESCRIPTION	PART NUMBER

THIS DRAWING IS A CONTROLLED DOCUMENT FOR TYCO ELECTRONICS CORPORATION. IT IS SUBJECT TO CHANGE AND THE CONTROLLING ENGINEERING ORGANIZATION SHOULD BE CONTACTED FOR THE LATEST REVISION.		DWN R. GRZYBOWSKI 04OCT06	Tyco Electronics Harrisburg, PA 17105-3608														
DIMENSIONS: INCHES		CHK S. FLICKINGER 04OCT06															
TOLERANCES UNLESS OTHERWISE SPECIFIED:		APVD S. FLICKINGER 04OCT06	NAME CONNECTOR ASSEMBLY SOCKET, CRIMP 75 AMP, LOWER DRAWER														
<table border="1"> <tr><td>0 PLC</td><td>±</td></tr> <tr><td>1 PLC</td><td>±</td></tr> <tr><td>2 PLC</td><td>±.02</td></tr> <tr><td>3 PLC</td><td>±.010</td></tr> <tr><td>4 PLC</td><td>±</td></tr> <tr><td>ANGLES</td><td>±.5</td></tr> <tr><td>FINISH</td><td></td></tr> </table>		0 PLC	±	1 PLC	±	2 PLC	±.02	3 PLC	±.010	4 PLC	±	ANGLES	±.5	FINISH		PRODUCT SPEC -	SIZE A2
0 PLC	±																
1 PLC	±																
2 PLC	±.02																
3 PLC	±.010																
4 PLC	±																
ANGLES	±.5																
FINISH																	
MATERIAL		APPLICATION SPEC -	CAGE CODE 00779														
		WEIGHT -	DRAWING NO 1926245														
		CUSTOMER DRAWING	RESTRICTED TO -														
		SCALE 3:1	SHEET 1 OF 2														
			REV B														

**ELCON LOWER DRAWER**

THIS DRAWING IS UNPUBLISHED. RELEASED FOR PUBLICATION 20  
 © COPYRIGHT 20 BY TYCO ELECTRONICS CORPORATION. ALL RIGHTS RESERVED.

LOC	DIST	REVISIONS			
P	LTR	DESCRIPTION	DATE	DWN	APVD
GP	00	-	SEE SHEET 1	-	-



- PART NUMBER CHANGES AND OR DESIGN CHANGES AFFECTING THE INTERCHANGEABILITY REQUIRE PRIOR TYCO APPROVAL AND AUTHORIZATION BY REVISION TO THIS DRAWING.
- MATERIAL:  
 INSULATOR: THERMOPLASTIC, GLASS REINFORCED, UL 94V-0  
 FLAMMABILITY RATED, COLOR: BLACK  
 CONTACT: COPPER ALLOY  
 CROWN BAND: COPPER ALLOY  
 RETENTION CLIP: BERYLLIUM COPPER OR STAINLESS STEEL  
 SHOULDER SCREWS: STAINLESS STEEL
- FINISH:  
 CONTACTS SIZE #20 BODY : GOLD .000010 MIN THK.  
 OVER NICKEL .00040 MIN THK.  
 CROWN BAND CONTACT: GOLD .000030 MIN THK.  
 OVER NICKEL .00040 MIN THK.

△4 ITEMS PROVIDED TO THIS SPECIFICATION TO BE PERMANENTLY IDENTIFIED PER THE FOLLOWING IDENTIFIER:

YEAR    WEEK   

TYCO PART NUMBER XXXXXXXX-X      DATE CODE (e.g. 0216) XXXX

△5 CRIMP CONTACTS AND SHOULDER SCREWS (ITEMS B AND C) SHALL BE PACKAGED SEPARATELY AND PLACED IN THE BOX WITH THE CONNECTOR ASSEMBLY.

SUGGESTED PANEL CUTOUT  
 VIEW FROM CONNECTOR MOUNTING SIDE

△5	C	2	1650589-1	FLOAT MOUNT SHOULDER SCREW, M4 X 0.7
△5	B	15	1648325-1	CONTACT, SOCKET, #20, CRIMP
	A	1	1648206-2	HOUSING, SOCKET, FLOAT MOUNT
	ITEM	-1	PART NUMBER	DESCRIPTION

**ELCON LOWER DRAWER**

<small>THIS DRAWING IS A CONTROLLED DOCUMENT FOR TYCO ELECTRONICS CORPORATION. IT IS SUBJECT TO CHANGE AND THE CONTROLLING ENGINEERING ORGANIZATION SHOULD BE CONTACTED FOR THE LATEST REVISION.</small>		DWN R.GRZYBOWSKI 04OCT06 CHK S.FLICKINGER 04OCT06 APVD S.FLICKINGER 04OCT06	Tyco Electronics Harrisburg, PA 17105-3608
DIMENSIONS: INCHES 	TOLERANCES UNLESS OTHERWISE SPECIFIED: 0 PLC ± 1 PLC ± 2 PLC ±.02 3 PLC ±.010 4 PLC ± ANGLES ±.5 FINISH	NAME S.FLICKINGER PRODUCT SPEC APPLICATION SPEC WEIGHT	NAME CONNECTOR ASSEMBLY SOCKET, CRIMP 75 AMP, LOWER DRAWER SIZE A2 CAGE CODE 00779 DRAWING NO G-1926245 RESTRICTED TO
MATERIAL		CUSTOMER DRAWING	SCALE 3:1 SHEET 2 OF 2 REV B

单击下面可查看定价，库存，交付和生命周期等信息

[>>TE Connectivity\(泰科\)](#)