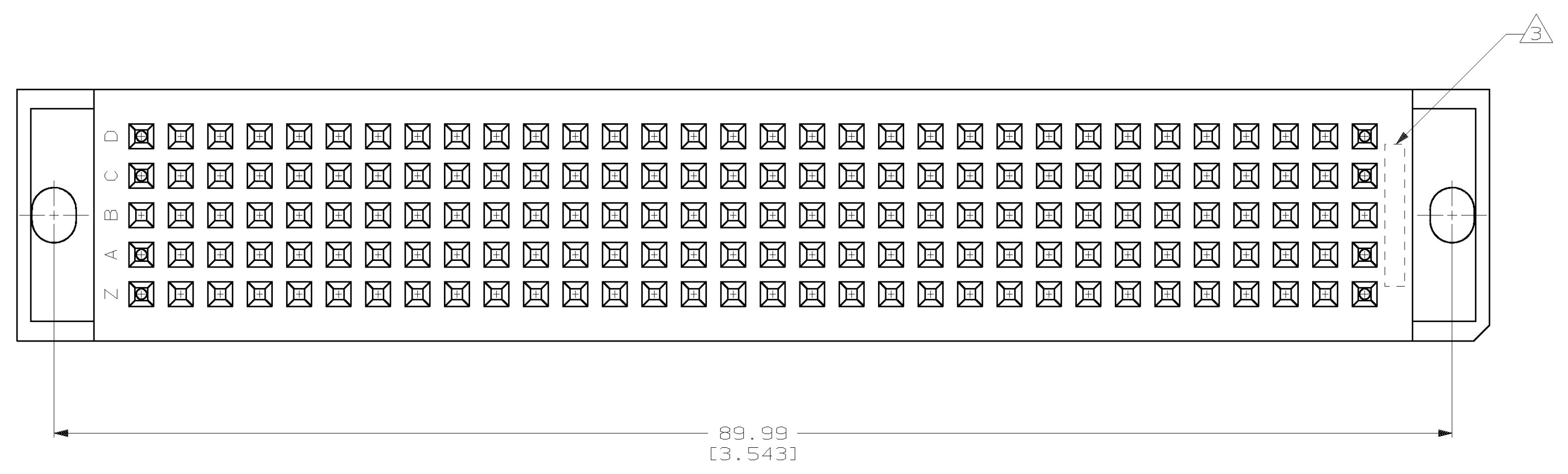
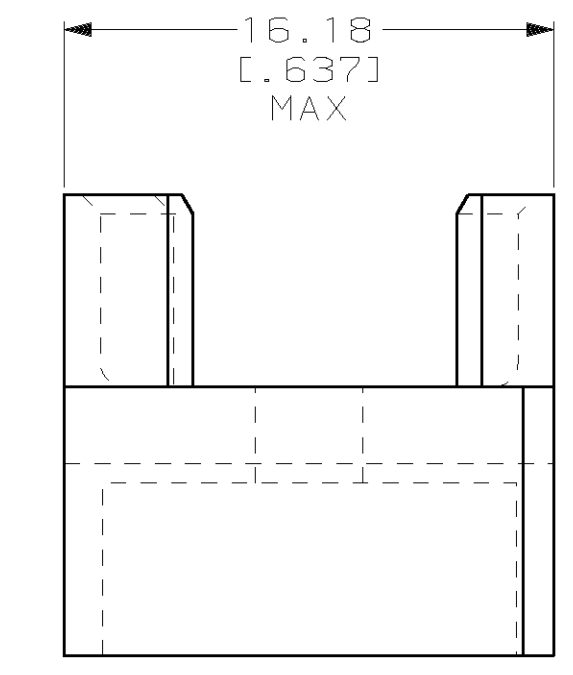
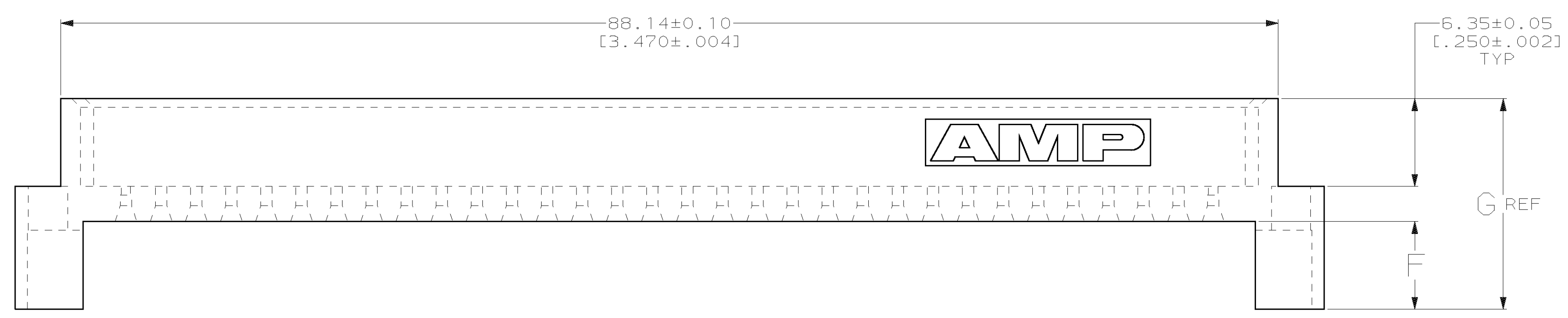


- 1. HOUSING: GLASS-FILLED POLYESTER, GRAY.
- 2. INTERFERENCE CAVITES LOCATED AT POSITIONS 1,32 IN ROWS "A", "C", "D" & "Z".
- 3. AMP PART NUMBER MOLDED IN THIS APPROXIMATE AREA.
- 4. CONNECTOR TAIL LENGTH: 16.99 [0.669].



3.81 [0.150]	14.61 [0.575]	5.72 [0.225]	148527-2
3.18 [0.125]	15.24 [0.600]	6.35 [0.250]	148527-1
PC BOARD THICKNESS	G	F	PART NUMBER

THIS DRAWING IS A CONTROLLED DOCUMENT.		DWN D. CARRO 09 APR 99	AMP Incorporated Harrisburg, PA 17105-3608	
DIMENSIONS mm (INCHES)		CHK C. RICHARD 09 APR 99	NAME 5 ROW SHROUD, EUROCARD, WITH MOUNTING HOLES	
TOLERANCES UNLESS OTHERWISE SPECIFIED:		APPROV C. RICHARD 09 APR 99	RESTRICTED TO	
0 PLC ±	1 PLC ±	PRODUCT SPEC	SIZE CAGE CODE DRAWING NO	
2 PLC ±0.13 (0.005)	3 PLC ±	APPLICATION SPEC	A1 00779 148527	
4 PLC ±	ANGLES ±	WEIGHT	SCALE 4:1 SHEET 1 OF 1 REV 0	
MATERIAL	FINISH	CUSTOMER DRAWING		

单击下面可查看定价，库存，交付和生命周期等信息

[>>TE Connectivity\(泰科\)](#)