

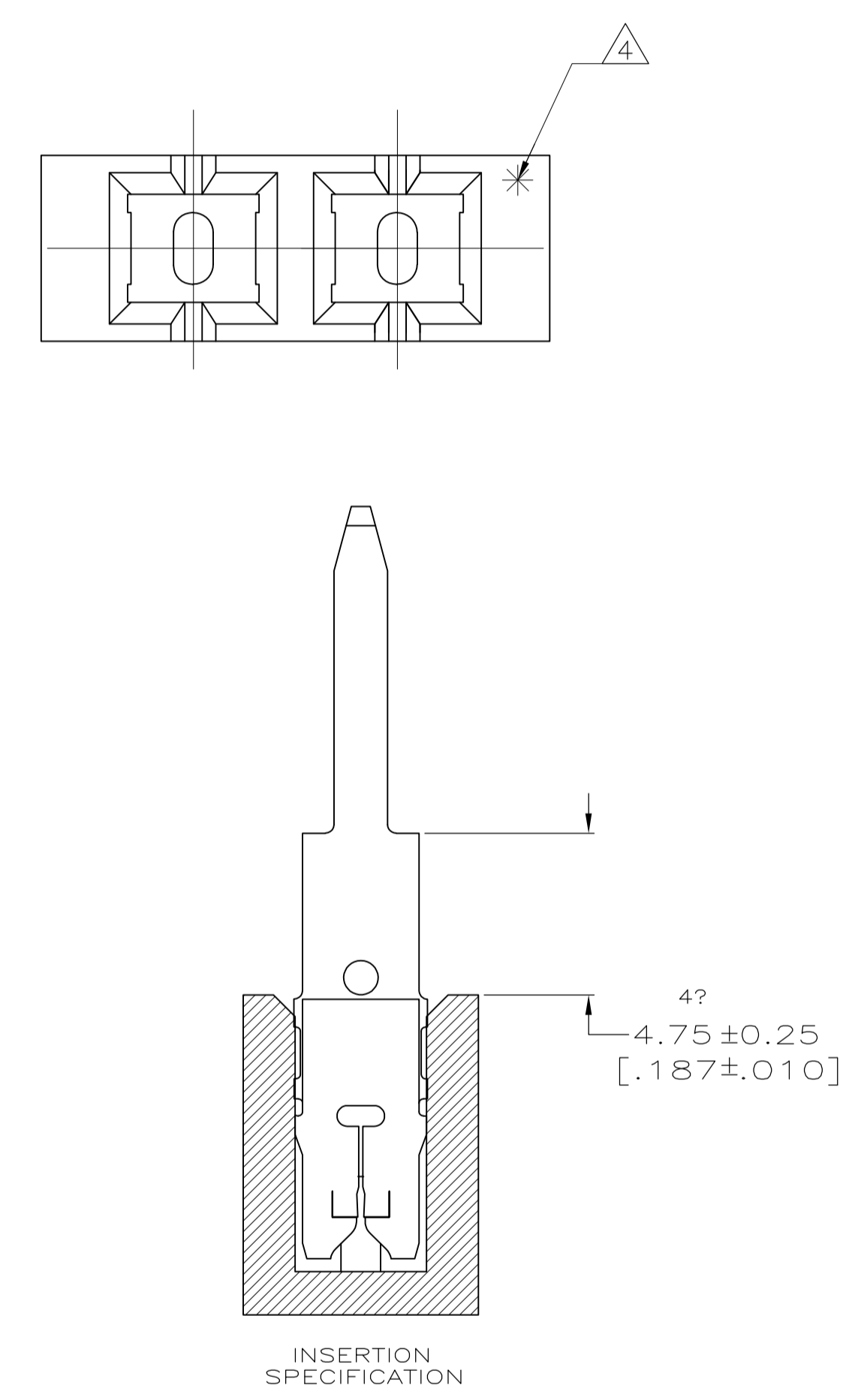
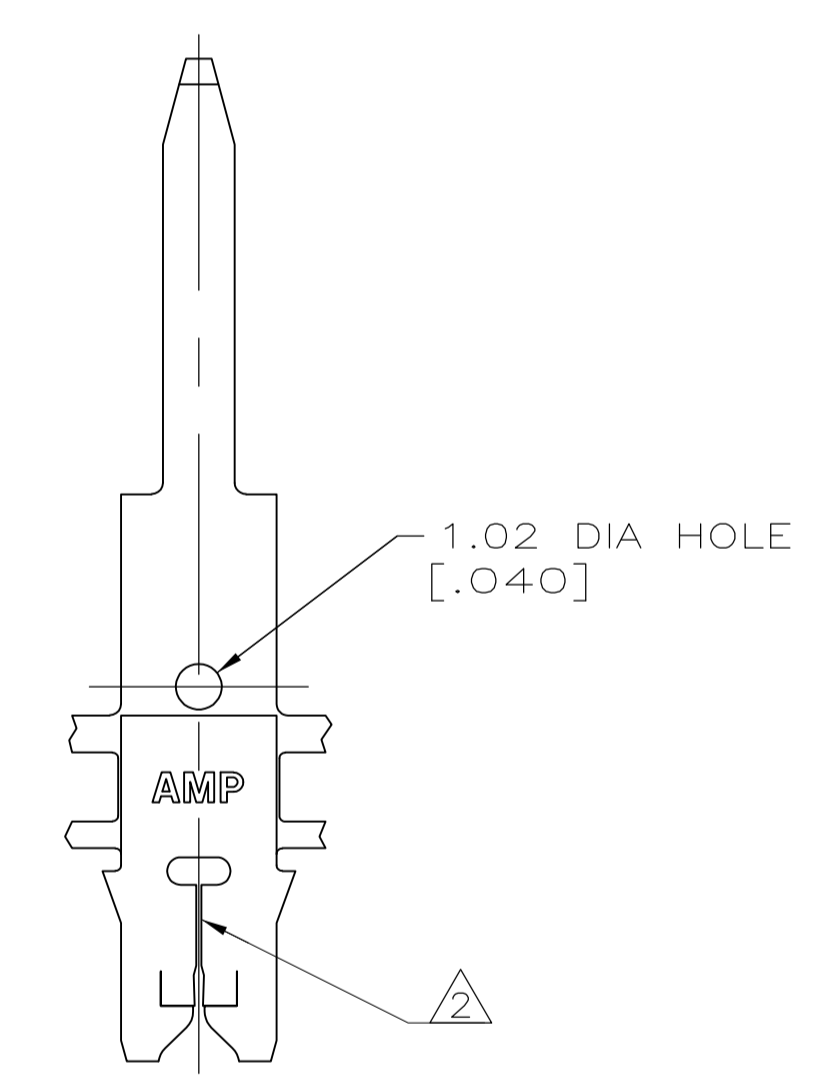
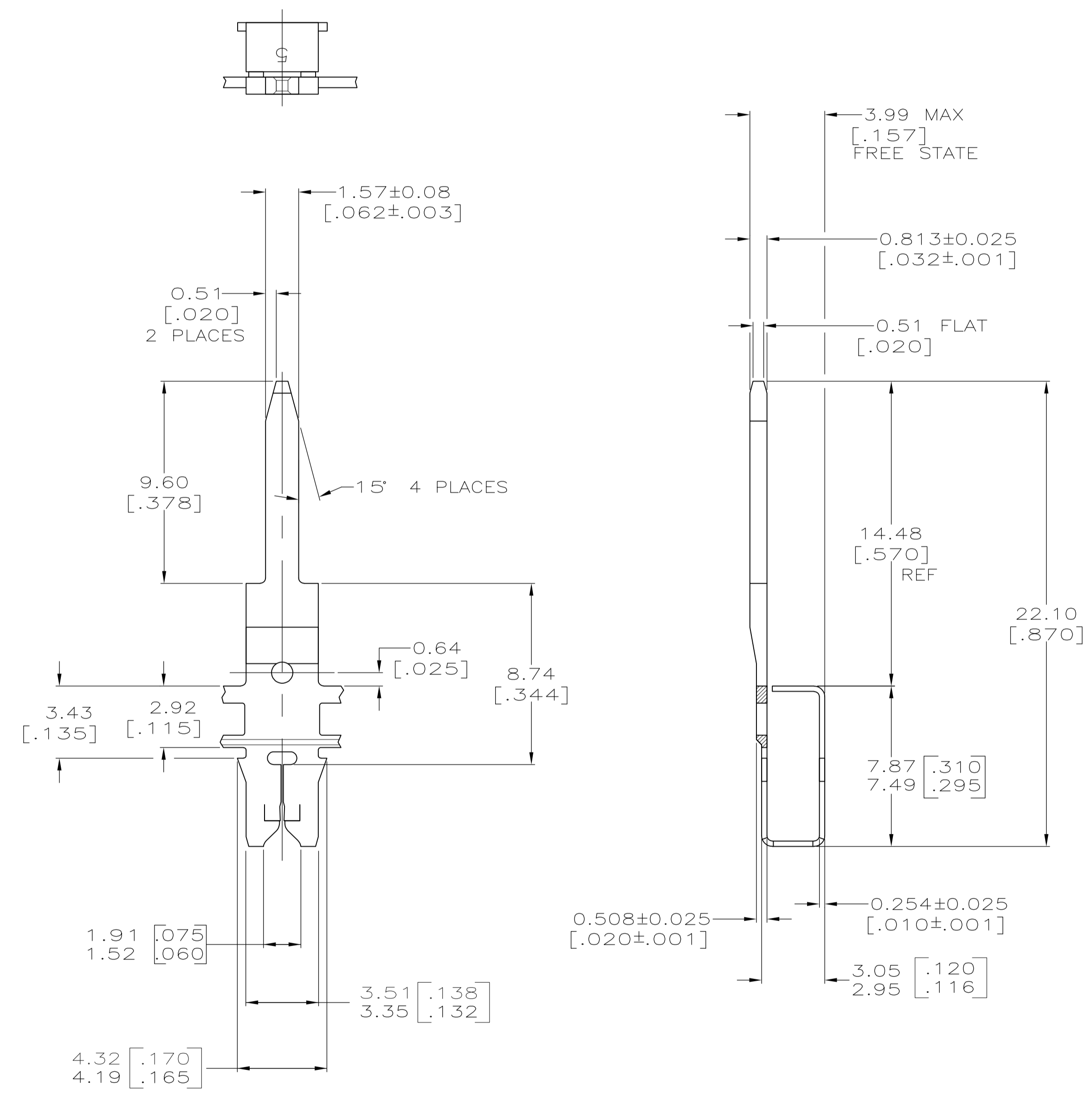



- 1 CONTINUOUS STRIP ON REELS WITH TERMINALS LOCATED ON 6.00±0.08 [.236±.003] CENTERS.
- 2  SLOT TERMINATES EITHER A SINGLE OR DOUBLE MAGNET WIRE OF THE SAME TYPE AND SIZE, COPPER 0.23mm [#31] AWG.
- 3 AFTER INSERTION INTO PLASTIC HOLDER, TAB PORTION MUST BE BENT OVER 45° TO 90° OR POTTED-IN TO PREVENT PULL-OUT WHEN MATING RECEPTACLE IS DISCONNECTED.
- 4  POINT OF MEASUREMENT LOCATED APPROXIMATELY AS SHOWN



63810-1
PART NO.

THIS DRAWING IS A CONTROLLED DOCUMENT.		DIN R. GRZYBOWSKI 2/JAN/95	 TE Connectivity	
DIMENSIONS: INCHES		CHK M.S. FEHER 2/JAN/95		
TOLERANCES UNLESS OTHERWISE SPECIFIED:		APVD N.E. NEFF 2/JAN/95	NAME TAB, 1.57[.062], 300 SRS MAG-MATE	
0. PLC ± -		PRODUCT SPEC	108-2012	
1. PLC ± -		APPLICATION SPEC	114-2046	
2. PLC ± 0.15[.006]		SIZE	A1	00779
3. PLC ± -		WEIGHT	63810	
4. PLC ± -		MATERIAL	BRASS	
ANGLES ± -		FINISH	TIN PLATED	
CUSTOMER DRAWING		SCALE	6:1	SHEET 1 OF 1

单击下面可查看定价，库存，交付和生命周期等信息

[>>TE Connectivity\(泰科\)](#)