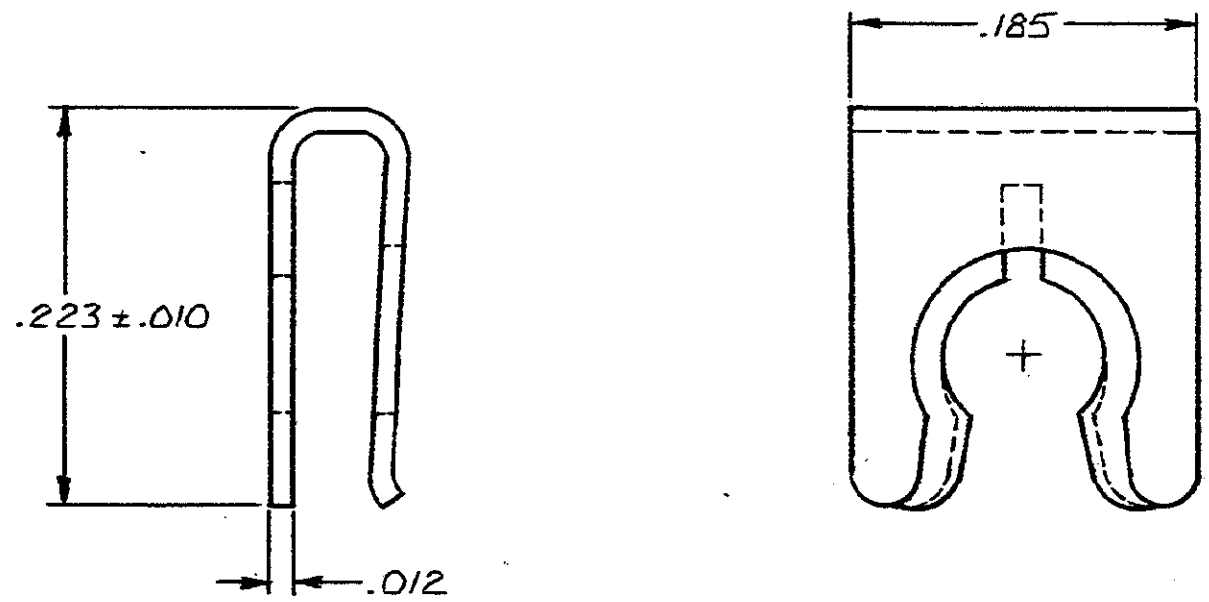


DRAWING MADE IN THIRD ANGLE PROJECTION

1 LOC *BD* DIST 39

THIS DRAWING IS UNPUBLISHED. RELEASED FOR PUBLICATION . 19 .
 © COPYRIGHT 19 BY AMP INCORPORATED, HARRISBURG, PA. ALL INTERNATIONAL RIGHTS RESERVED. AMP PRODUCTS MAY BE COVERED BY U.S. AND FOREIGN PATENTS AND/OR PATENTS PENDING.

REVISIONS						
P	F	ZONE	LTR	DESCRIPTION	DATE	APPROVED
	✓		A	REVISED PER ECO-13-012711	8/21/13	CWR



⚠ STAINLESS STEEL PER ASTM A666.

# 4-40	207386-1
THREAD	PART NO

UNLESS OTHERWISE SPECIFIED DIMENSIONS ARE IN INCHES. TOLERANCES ON: DECIMALS ± .005 ANGLES ±	CONTRACT NO		AMP AMP INCORPORATED Harrisburg, Pa.		
	DR <i>M. Eple</i> 1-7-88				
	MATERIAL		NAME		
	⚠		CLIP SCREW RETAINER AMPLIMITE®		
FINISH	APPR <i>R. T. K... 2-11-88</i>		SIZE	FSCM NO	DRAWING NO
	APPD <i>W. G. ... 1/11/85</i>		B	00779	207386
OTHER APPD		SCALE 10:1		SHEET 1 OF 1	

单击下面可查看定价，库存，交付和生命周期等信息

[>>TE Connectivity\(泰科\)](#)