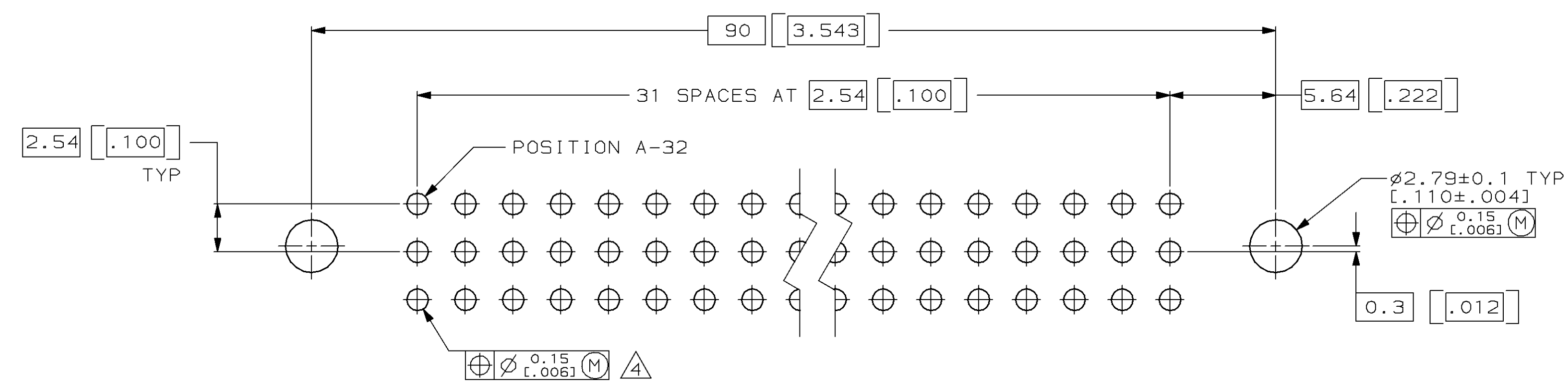
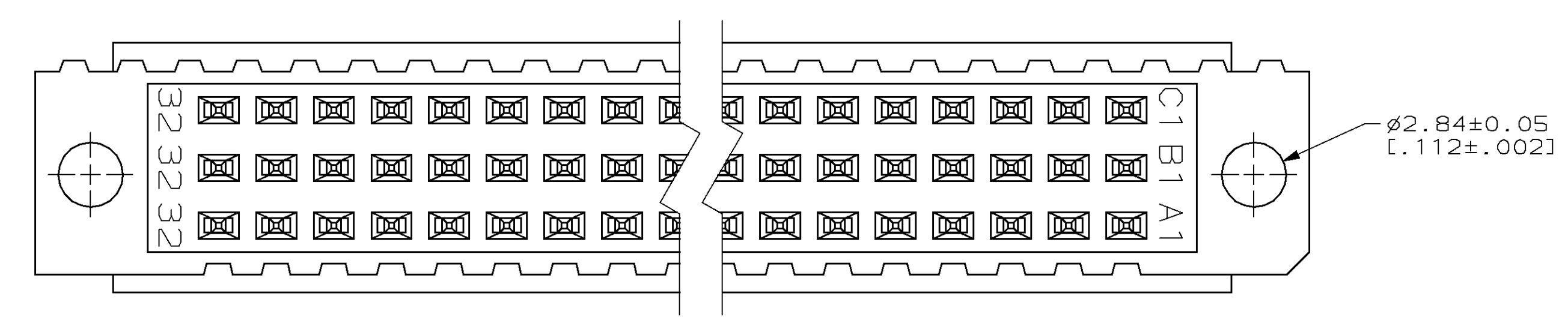
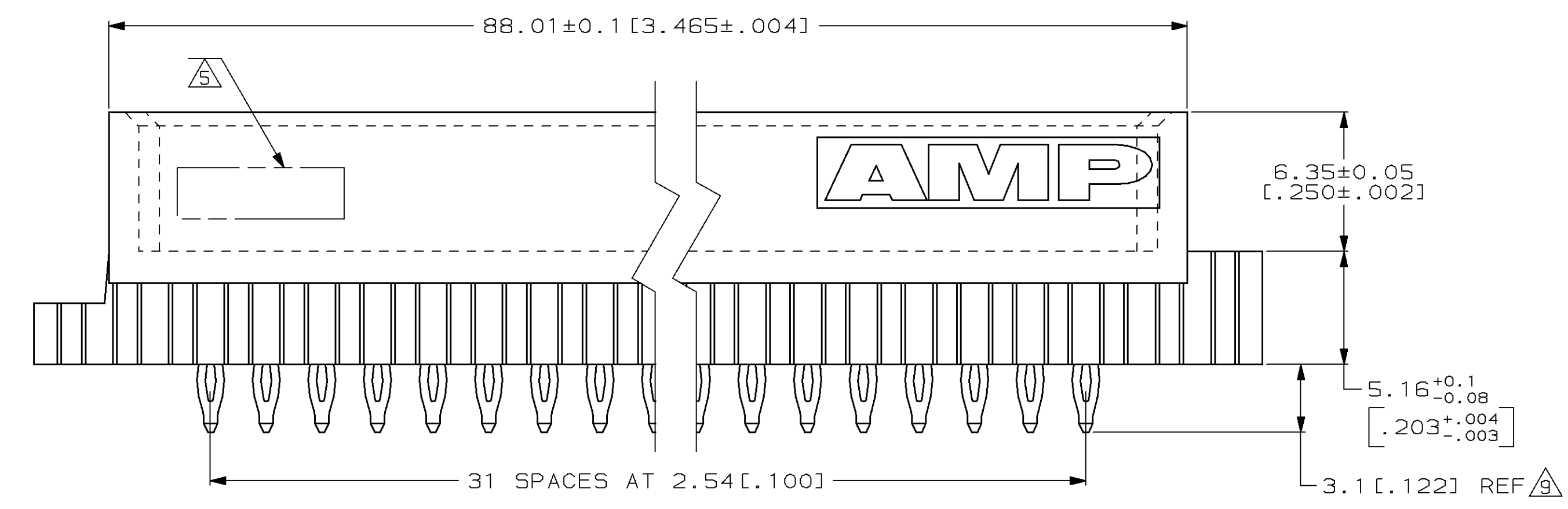
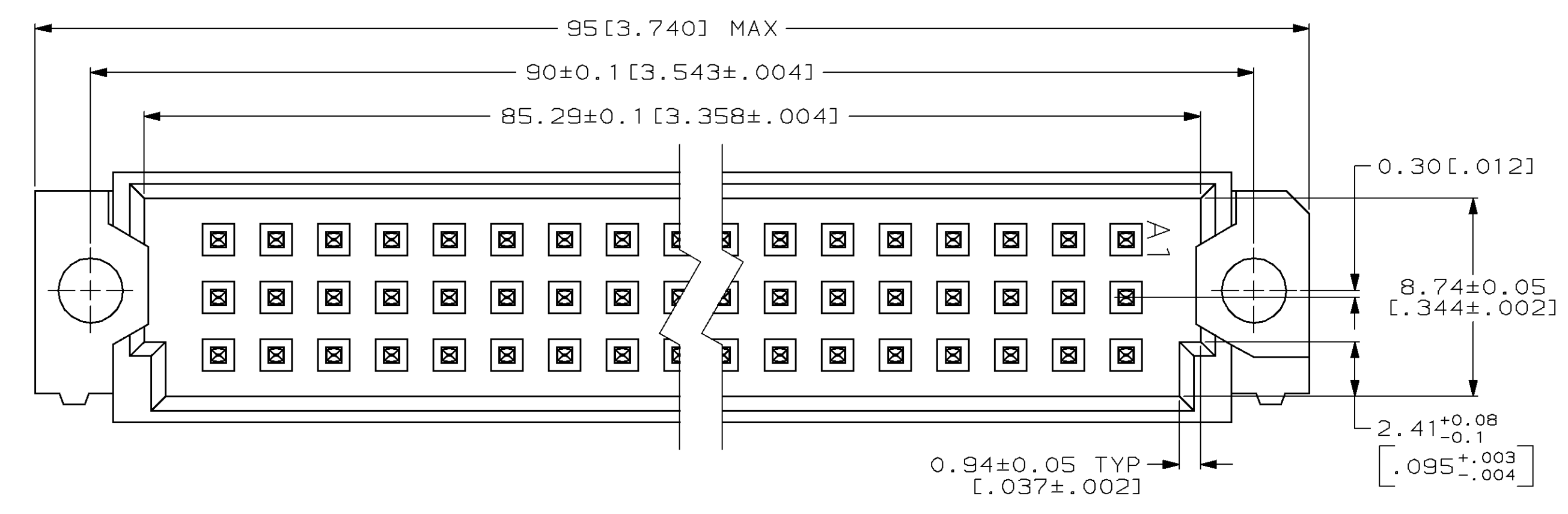
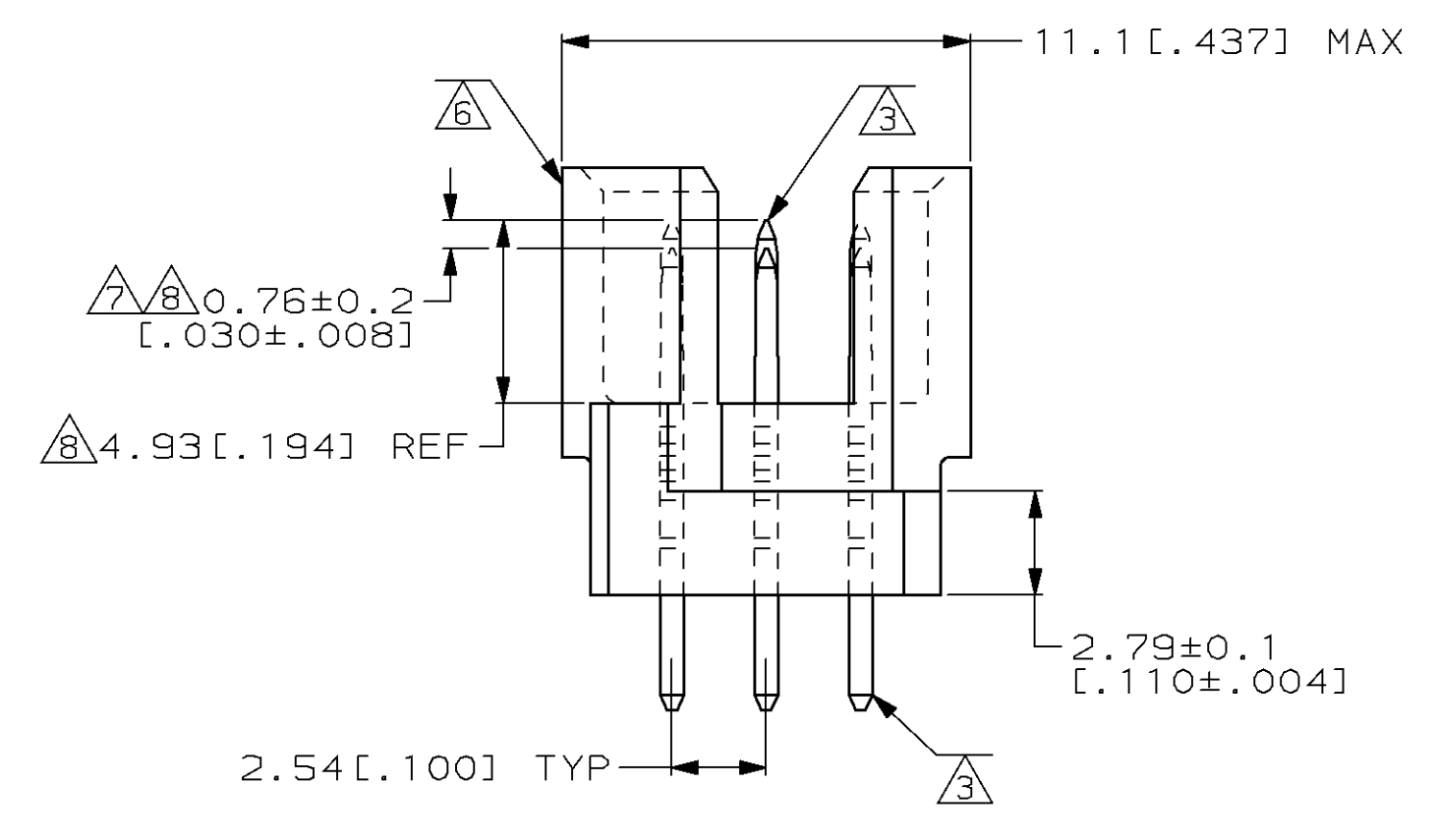


LOC		DIST		REVISIONS			
AD	25	P	LTR	DESCRIPTION	DATE	OWN	APVD
		0		DRAWN	-	-	-



- 1. HOUSING MATERIAL: GLASS-FILLED POLYESTER. COLOR: GRAY.
- 2. POST MATERIAL: PHOSPHOR BRONZE.
- 3. POST FINISH: 0.0076[.000030] GOLD IN CONTACT AREA. 0.00127[.000050] NICKEL UNDERPLATE ALL OVER. TIN-LEAD PLATE ON POSTS.
- 4. PC BOARD HOLES REQUIRED FOR ACTION PIN CONTACTS ARE Ø1.15[.0453] DRILL PLATED THROUGH WITH 0.02-0.08[.001-.003] COPPER AND 0.008[.0003] MINIMUM TIN-LEAD PLATING. FINISHED HOLE AFTER PLATING, Ø0.94-1.09[.037-.043].
- 5. [PART NUMBER, DATE CODE] MARKED THIS APPROXIMATE AREA.
- 6. MARKINGS ON THIS SIDE.
- 7. FOR MFBL APPLICATIONS, A 2.36[.093] MINIMUM THICK PC BOARD IS REQUIRED. PROGRAMMABLE SEATING TOOL 768216-2 MUST BE USED.
- 8. TO BE 4.16[.164] REF FOR LAST MAKE PINS AFTER SEATING. POST LENGTH DIFFERENCE BETWEEN SHORT AND LONG PINS TO BE 0.76±0.2[.030±.008] AFTER SEATING.
- 9. THIS DIMENSION WILL BE 4.06[.160] MAX AFTER SEATING FOR PINS WITH 4.17[.164] REF MATING POST.
- 10. FOR 1.57[.062] THICK PC BOARD APPLICATIONS, USE SEATING TOOL 768211-2. PROGRAMMABLE SEATING TOOL 768216-2 WITH PUSH PINS FOR MAKE FIRST CONTACTS ONLY, CAN ALSO BE USED.



148304-4  
PART NUMBER

THIS DRAWING IS A CONTROLLED DOCUMENT.		OWN L. BRINER 10/17/96	AMP Incorporated Harrisburg, PA 17105-3608	
DIMENSIONS: mm		CHK C. RICHARD 10/17/96	NAME C. RICHARD 10/17/96	
TOLERANCES UNLESS OTHERWISE SPECIFIED:		APPLD C. RICHARD 10/17/96	PRODUCT SPEC	
0 PLC ±		APPLICATION SPEC		
1 PLC ±		WEIGHT		
2 PLC ±0.13[.005]		SCALE 5:1		
3 PLC ±		SHEET 1 OF 1		
4 PLC ±		REV 0		
ANGLES ±		CUSTOMER DRAWING		
FINISH -		DRAWING NO A1 00779 C-148304		
MATERIAL HOUSING: 1		DATE		
POST: 2		DRAWN		

单击下面可查看定价，库存，交付和生命周期等信息

[>>TE Connectivity\(泰科\)](#)