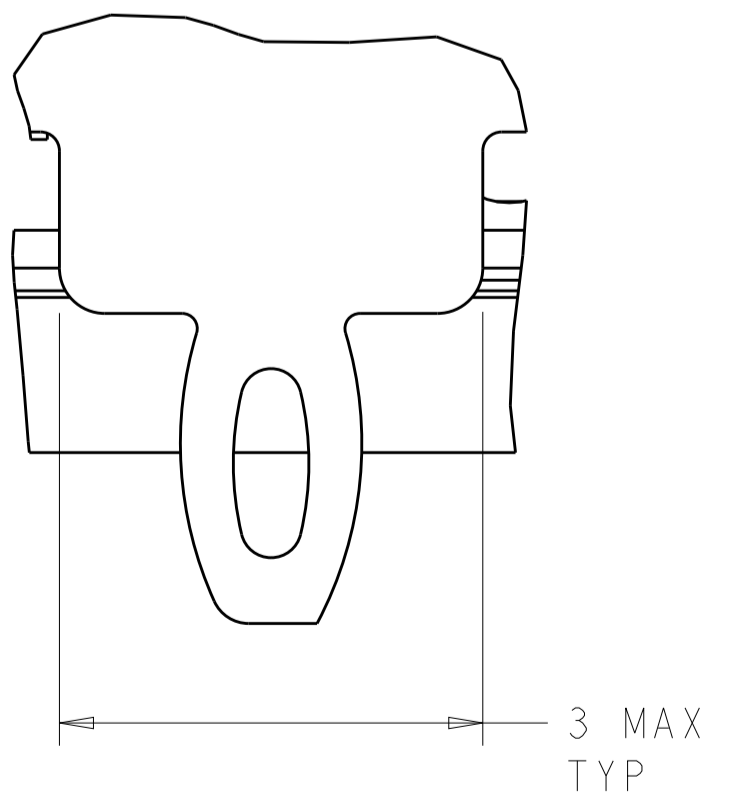
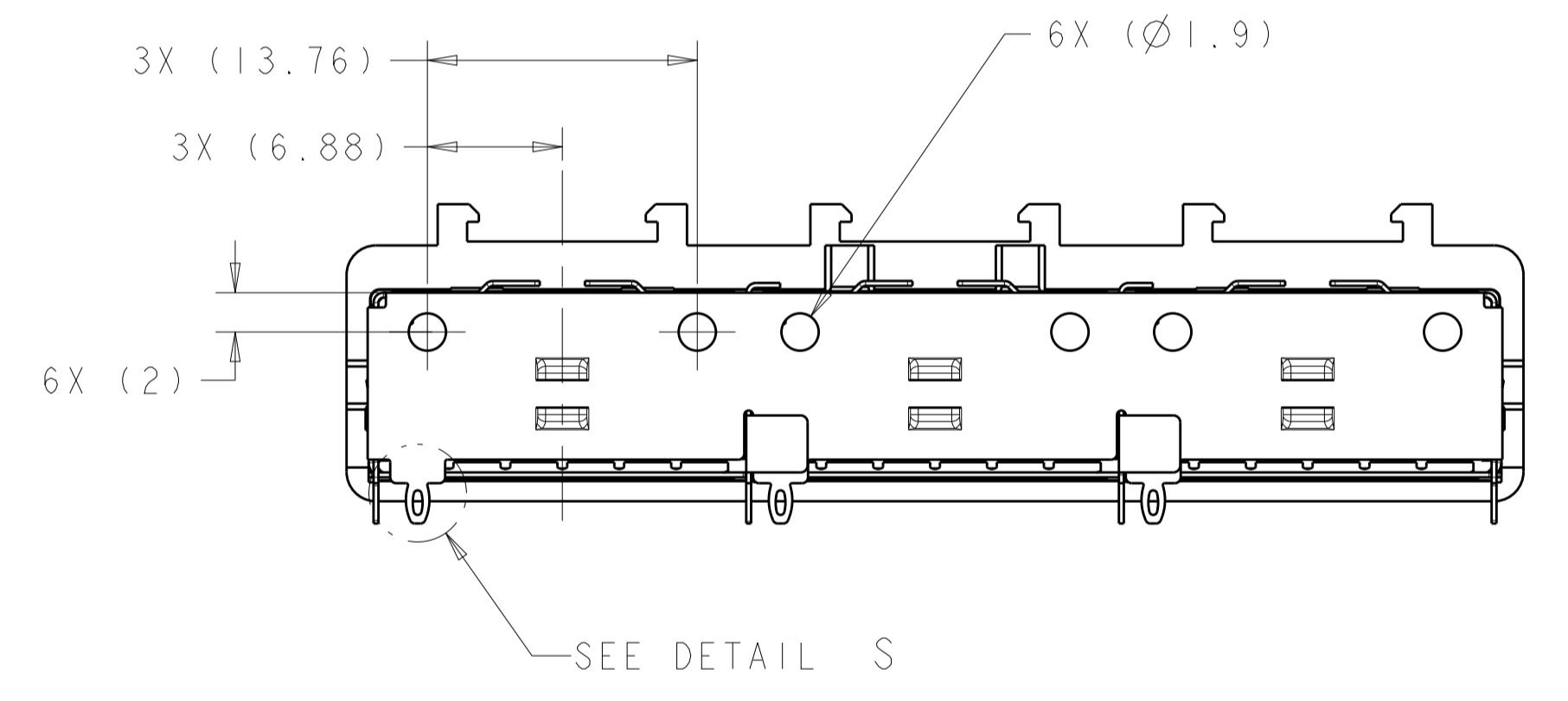
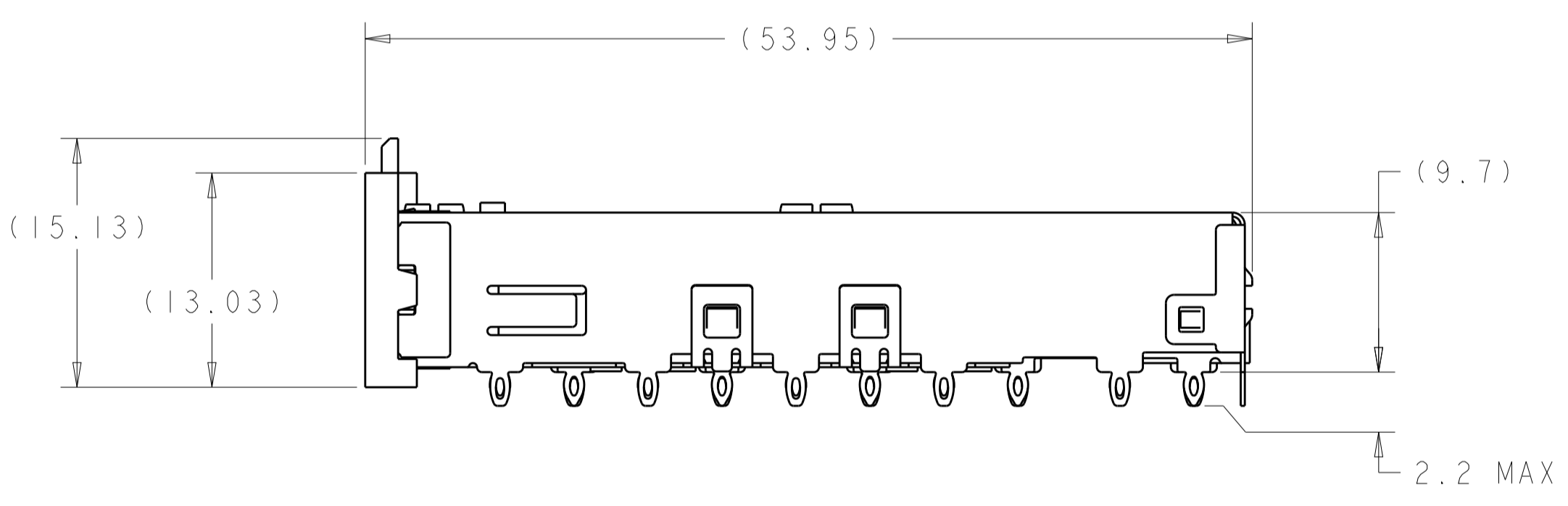
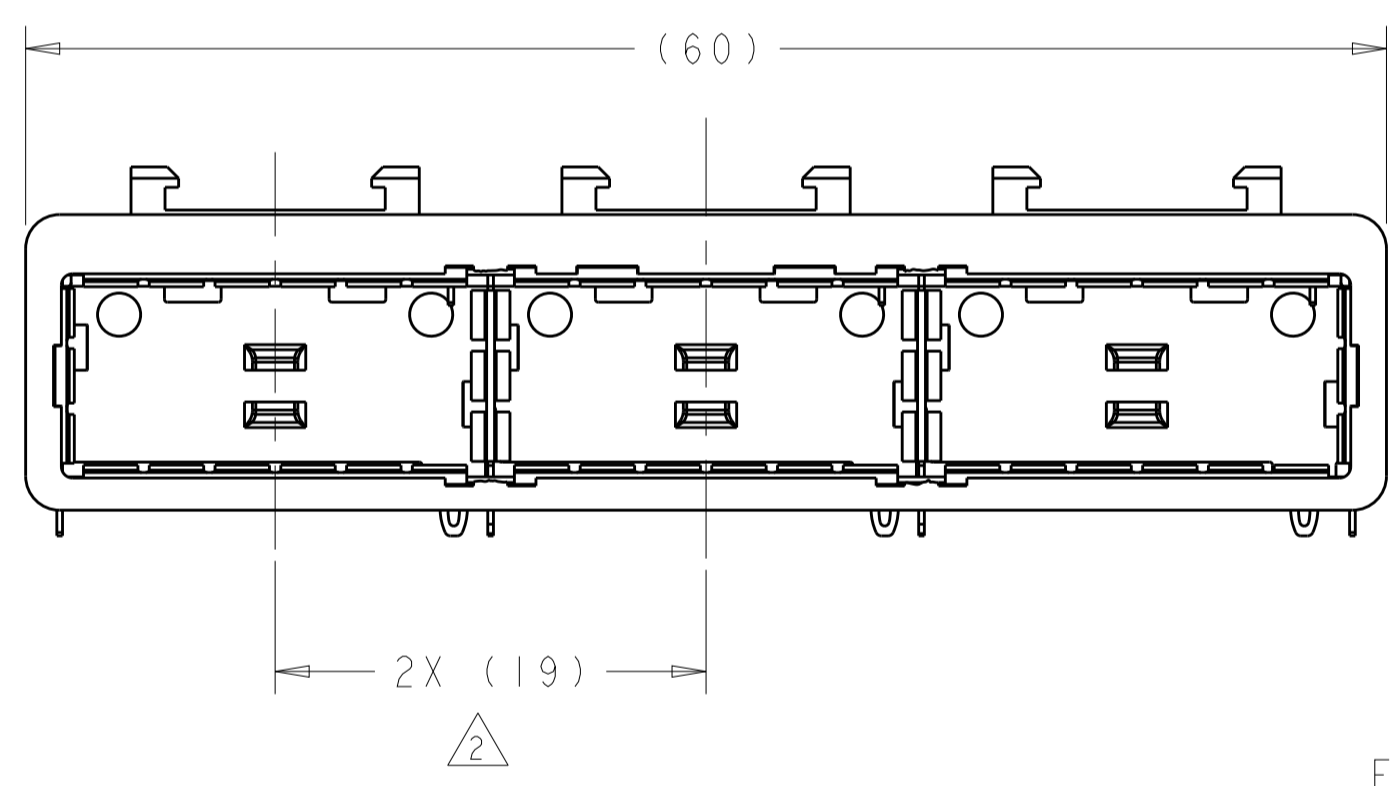
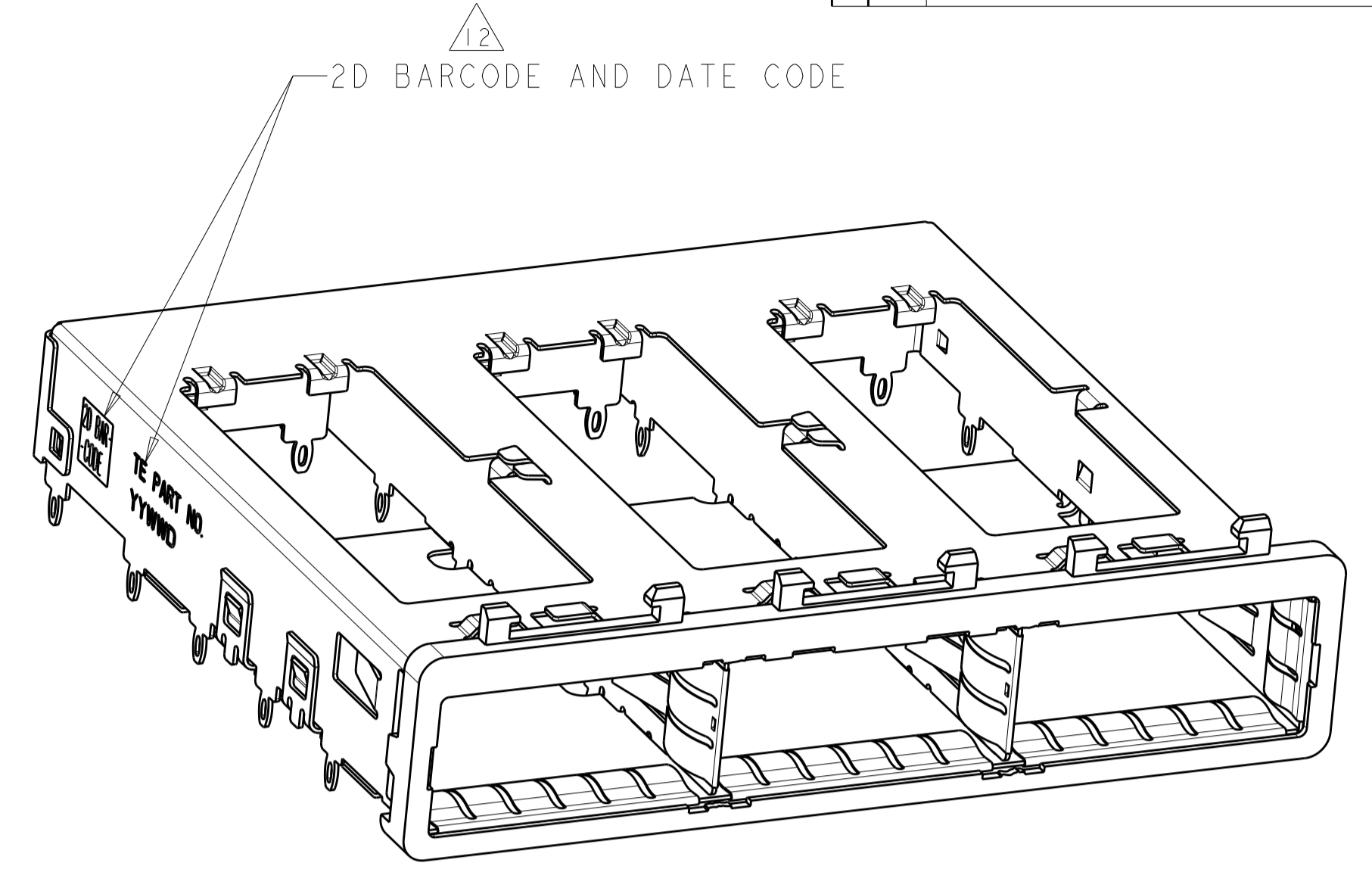
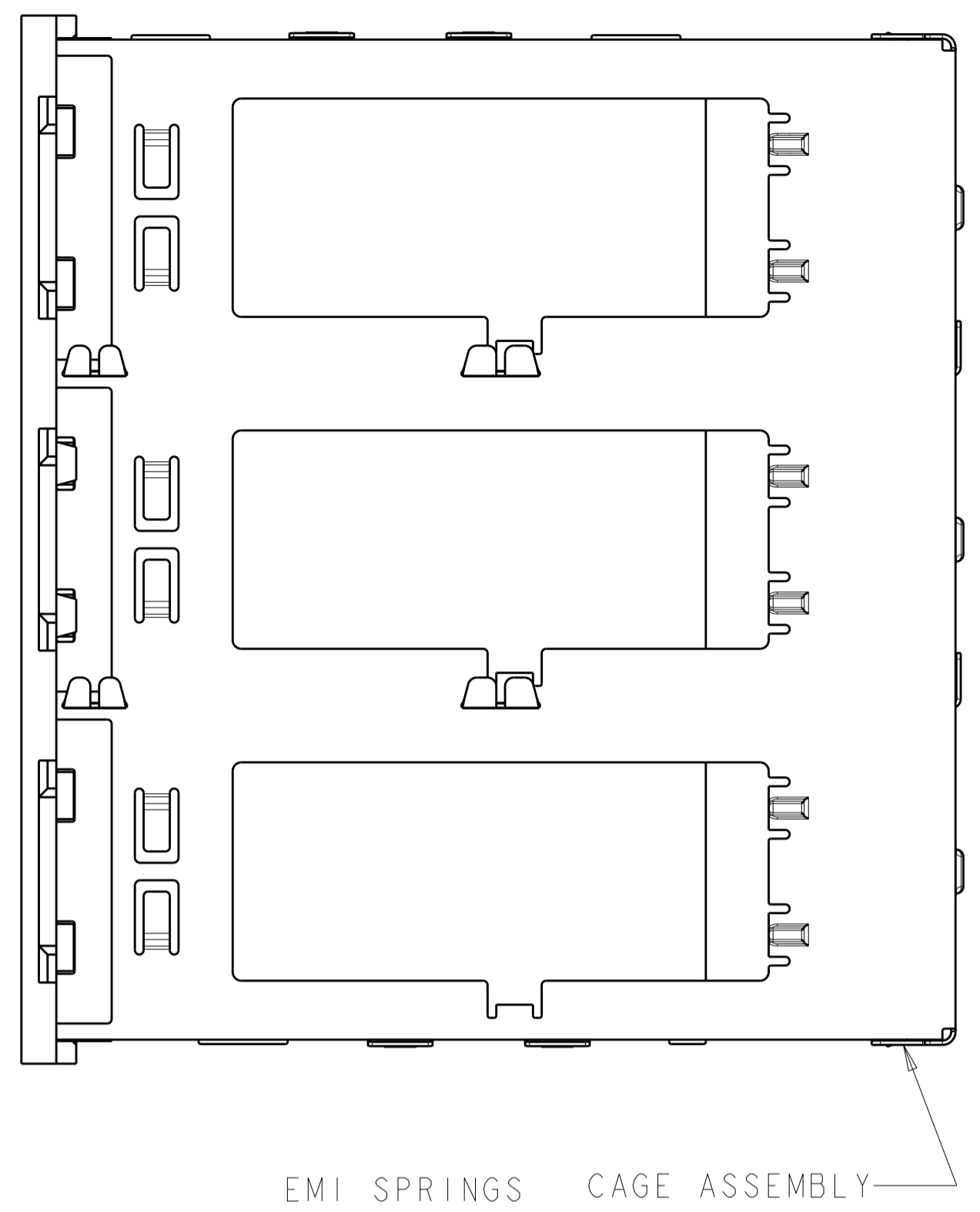
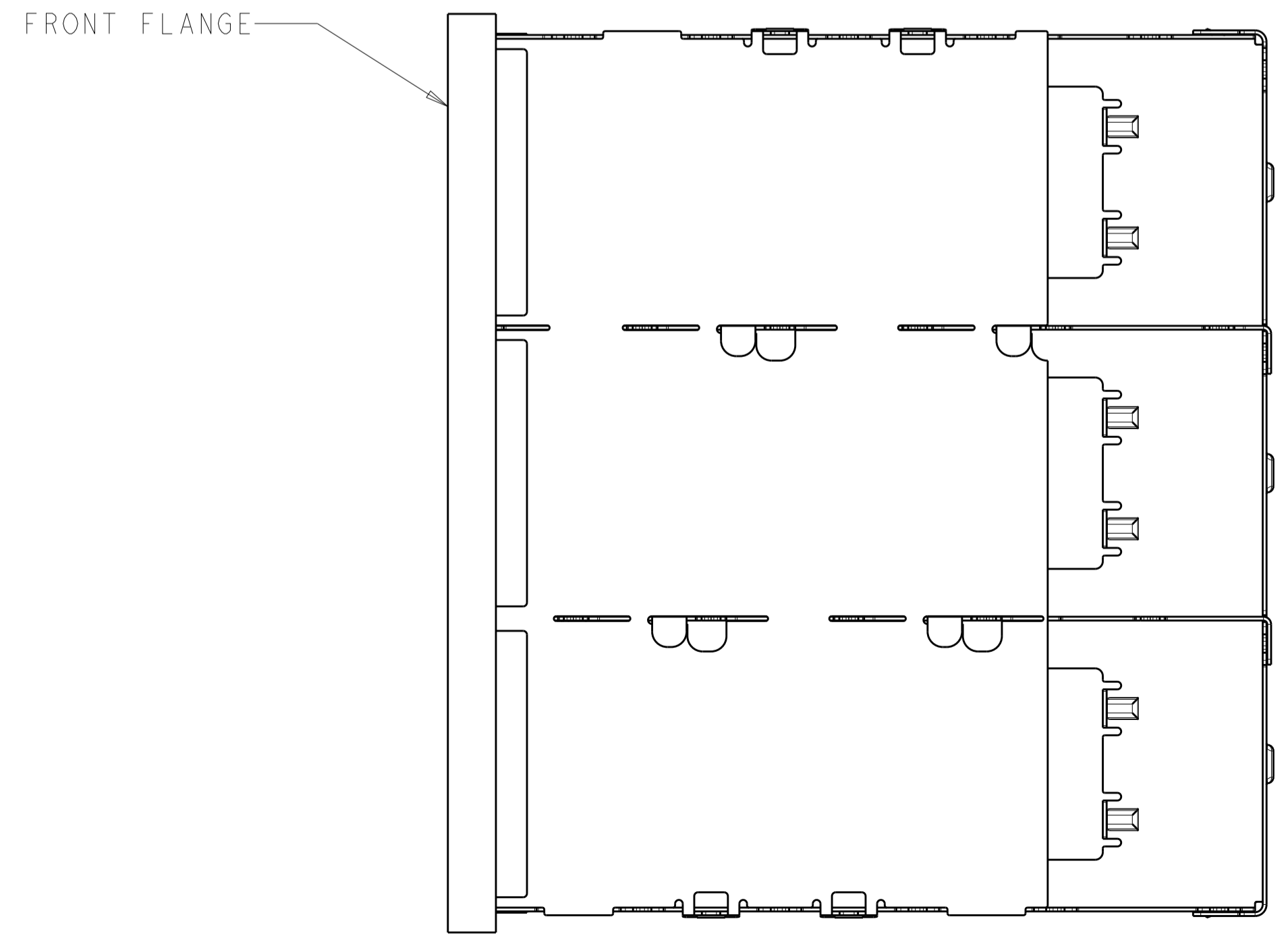


REVISIONS				
P.	LTN.	DESCRIPTION	DATE	APP'D.
D		REVISED PER ECO-15-000148	24FEB2015	RG MC

- 1 SURFACE TRACES PERMITTED WITHIN THIS AREA EXCEPT WHERE CAGE STANDOFFS, SHOWN IN DETAIL S, CONTACT PC BOARD.
- 2 PITCH BETWEEN PORTS OF ONE 1X3 CAGE ASSEMBLY.
- 3 SPACING BETWEEN CAGES ON THE SAME PC BOARD, TO BE SPECIFIED BY CUSTOMER, MUST COMPLY WITH MINIMUM DIMENSIONS SHOWN.
- 4 REFERENCE APPLICATION SPEC 114-13218 FOR RECOMMENDED DRILL HOLE DIAMETER AND PLATING THICKNESS.
- 5 UNPLATED THRU HOLE.
- 6 DATUMS AND BASIC DIMENSIONS ESTABLISHED BY CUSTOMER.
- 7 DATUM -A- IS TOP SURFACE OF PC BOARD.
- 8 DIMENSION C IS THE NOMINAL THICKNESS OF CUSTOMER SUPPLIED PC BOARD.
 MINIMUM PC BOARD THICKNESS:
 SINGLE SIDED = 1.45mm
 DOUBLE SIDED = 2.2mm PER QSFP
- 9. MATES WITH QSFP MSA COMPATIBLE TRANSCEIVER.
- 10 BASELINE FOR THESE DIMENSIONS IS THE CENTER OF COMPLIANT PIN HOLE.
- 11 LED ON HOST BOARD. QUANTITY, POSITION AND GEOMETRY DEPENDS ON CHOICE OF LIGHT PIPES.
- 12 2D BARCODE AND DATE CODE (YYWW) MARKED APPROXIMATELY AS SHOWN.
- 13 REFERENCE APP SPEC 114-13218 FOR GASKET THICKNESS CALCULATION.
- 14 MATERIAL:
 CAGE ASSEMBLY: NICKEL SILVER, 0.25 THICK
 EMI SPRINGS: COPPER ALLOY
 FRONT FLANGE: ZINC ALLOY.
- 15 FINISH:
 EMI SPRINGS: 2µm MINIMUM TIN
 FRONT FLANGE: 3µm MINIMUM TIN OVER 1.27µm MINIMUM NICKEL OVER 5.08µm MINIMUM COPPER.



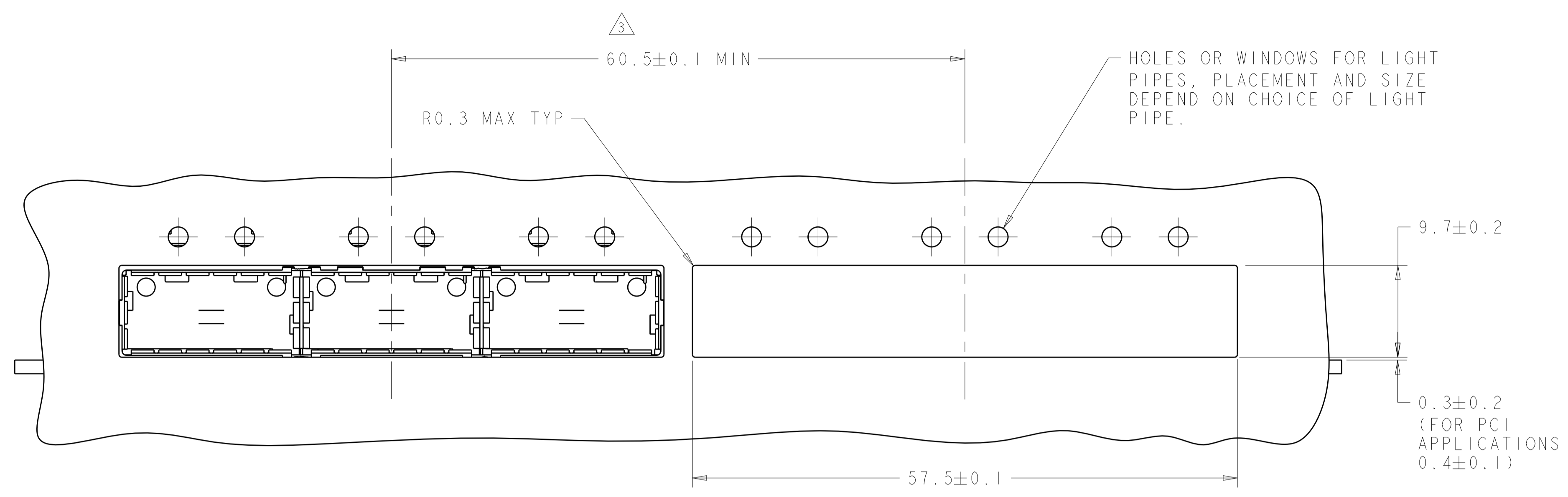
DETAIL S
SCALE 20:1



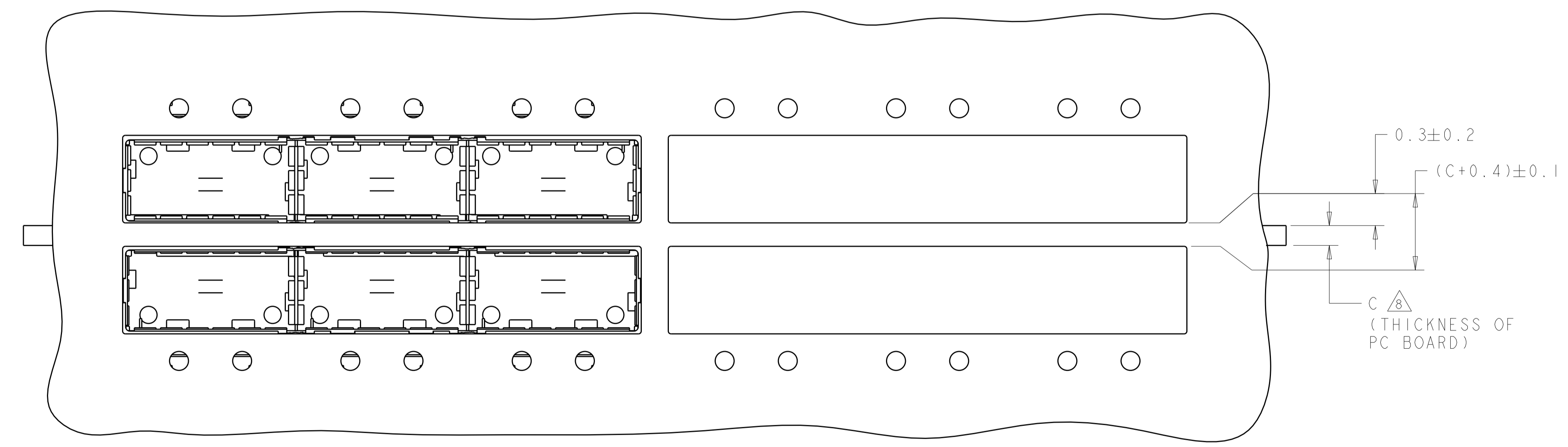
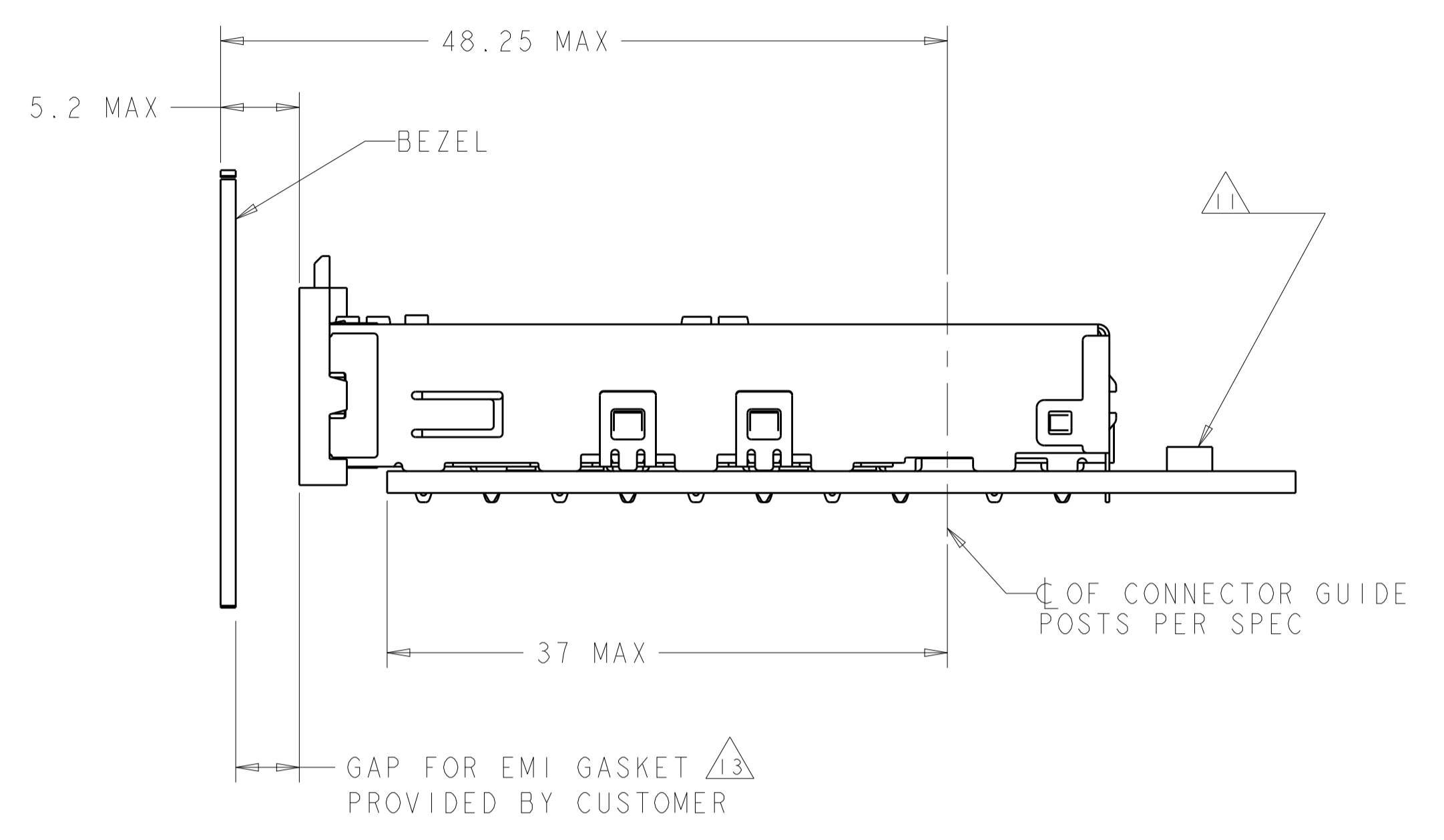
2007473-1
PART NUMBER

THIS DRAWING IS A CONTROLLED DOCUMENT.		DWN: C. VALENTINE CHK: E. BRIGHT APP'D: E. BRIGHT	Z1NOV2007 Z1NOV2007 Z1NOV2007	TE Connectivity NAME: 1X3 CAGE ASSEMBLY, W/ LIGHT PIPE BRACKET, BEHIND BEZEL, QSFP PRODUCT SPEC: 108-2286 APPLICATION SPEC: 114-13218	RESTRICTED TO
DIMENSIONS:	TOLERANCES UNLESS OTHERWISE SPECIFIED:	MATERIAL:	FINISH:		SIZE: A1 CAGE CODE: C=2007473 DRAWING NO: 00779
mm	0 PLC ±.1 2 PLC ±0.1 3 PLC ±0.13 4 PLC ±0.0001	14	15	CUSTOMER DRAWING	SCALE 3:1

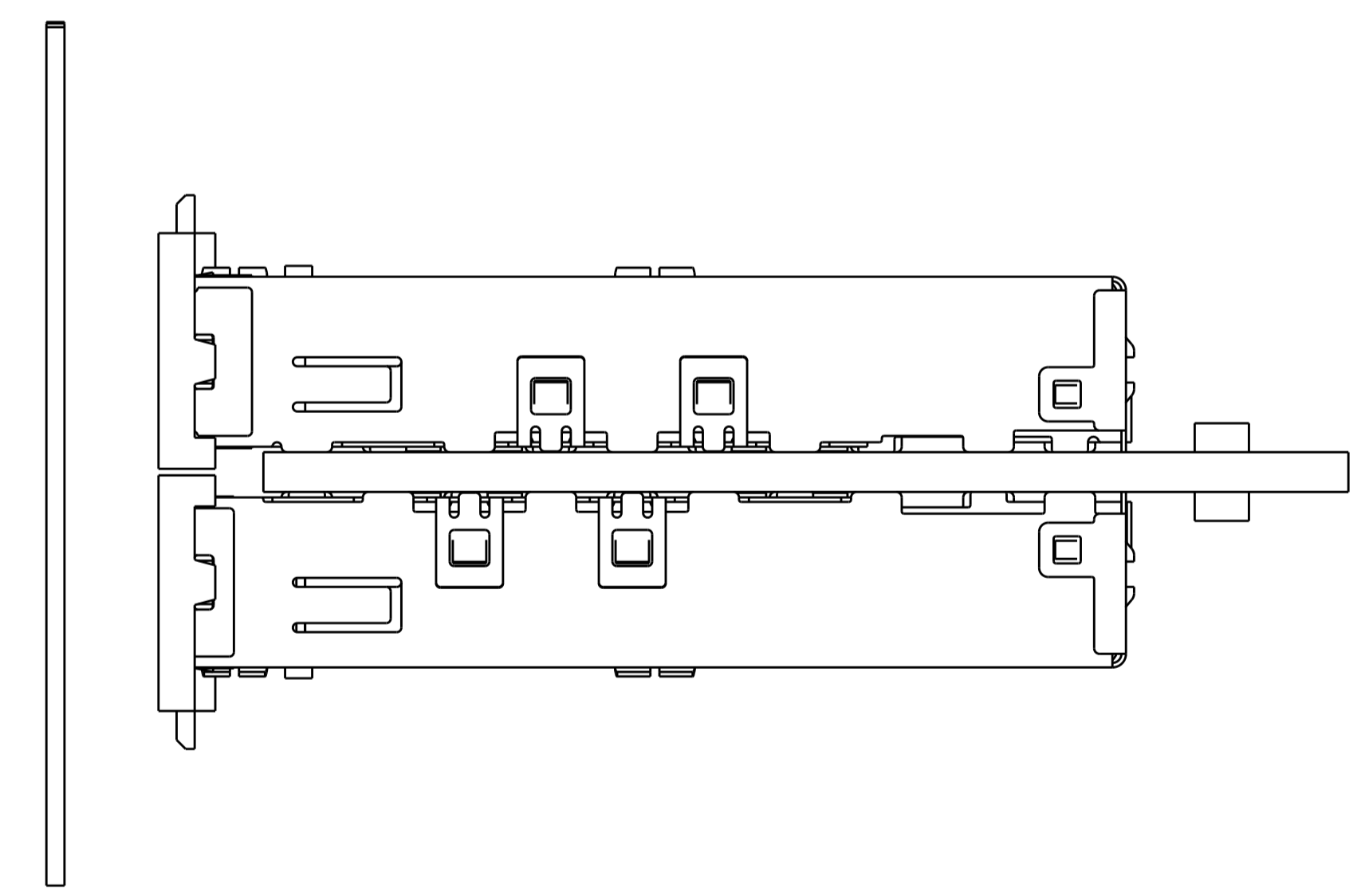
REVISIONS				
P.	LTH	DESCRIPTION	DATE	OWN APVD
-	-	SEE SHEET 1	-	-



ONE SIDED CONFIGURATION
 SCALE 3:1



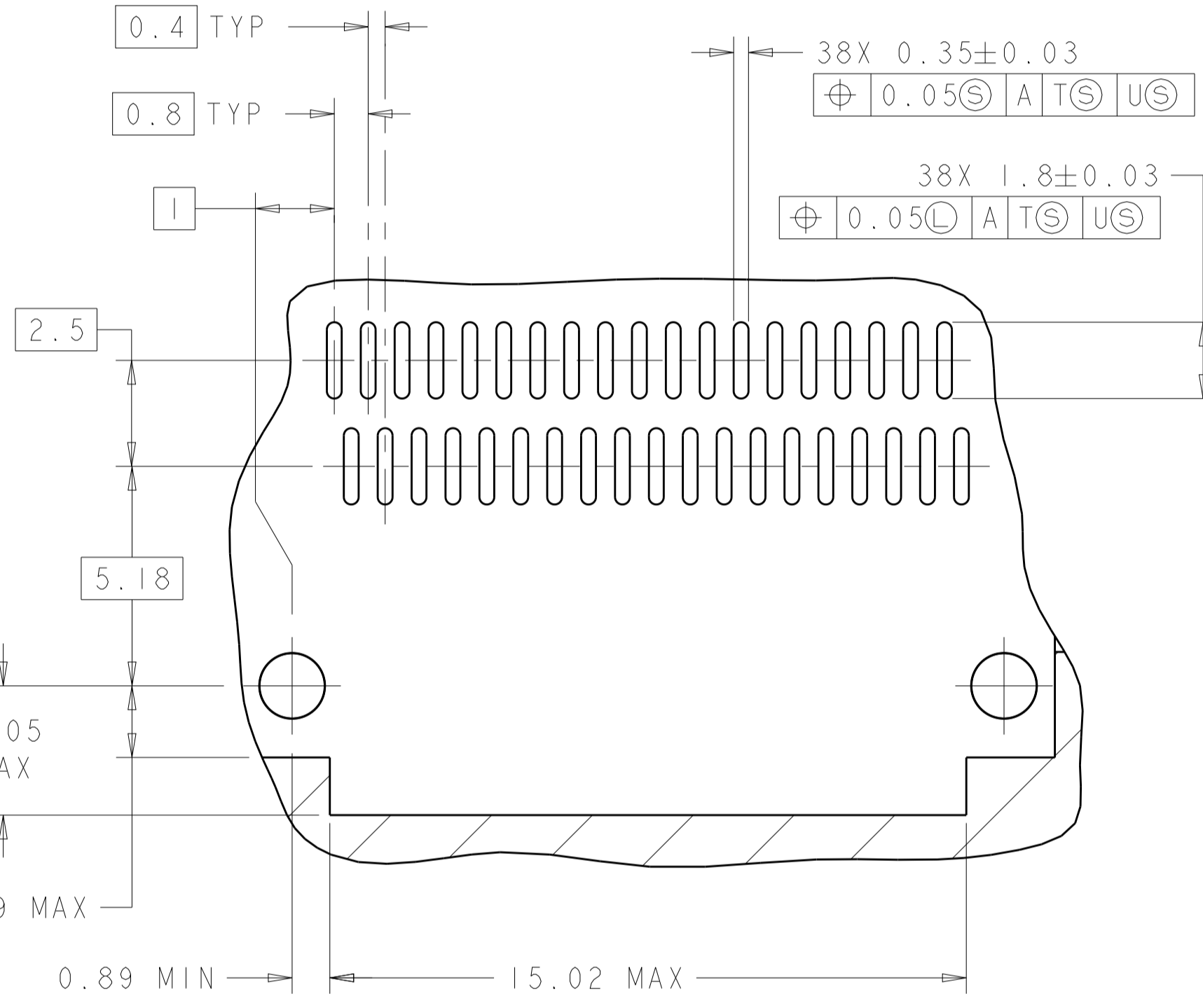
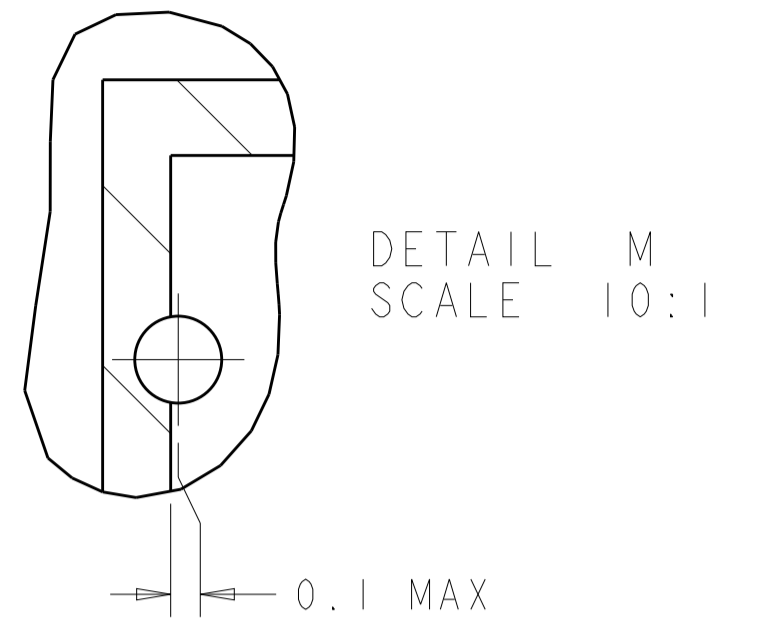
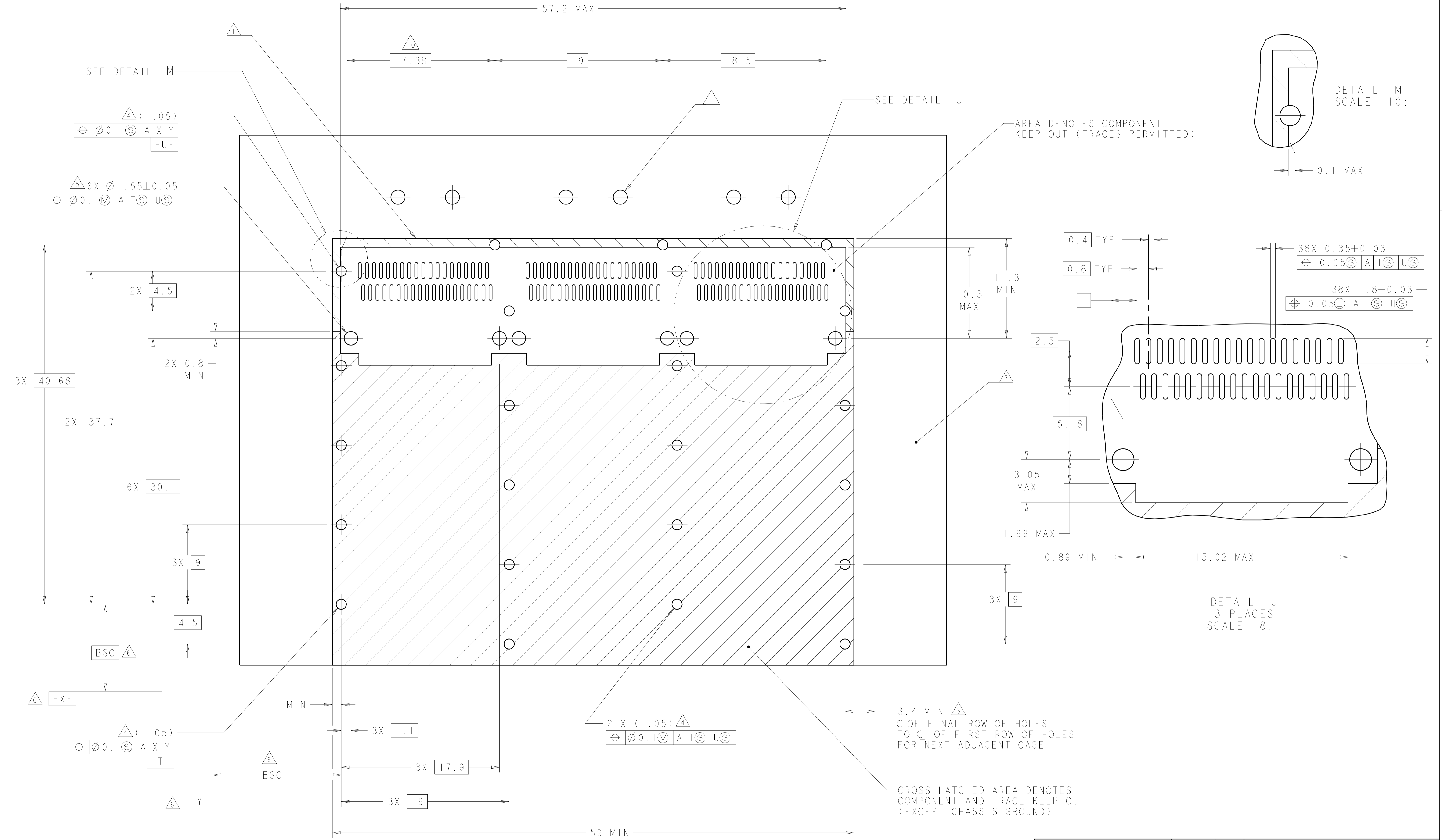
BELLY TO BELLY CONFIGURATION SIMILAR TO ONE SIDED EXCEPT WHERE NOTED
 SCALE 3:1



THIS PRODUCT HAS NOT COMPLETED VALIDATION/QUALIFICATION TESTING

THIS DRAWING IS A CONTROLLED DOCUMENT.		OWN: C. VALENTINE 21NOV2007	TE Connectivity
DIMENSIONS: mm		CHK: E. BRIGHT 21NOV2007	
		APVD: F. BRIGHT 21NOV2007	NAME: 1X3 CAGE ASSEMBLY, W/ LIGHT PIPE BRACKET, BEHIND BEZEL, QSFP
TOLERANCES UNLESS OTHERWISE SPECIFIED:		PRODUCT SPEC: 108-2286	SIZE: 114-13218
0 PLC ± 1 PLC ±0.1 2 PLC ±0.1 3 PLC ±0.013 4 PLC ±0.0001 ANGLES ±		APPLICATION SPEC: 114-13218	RESTRICTED TO: -
MATERIAL: TBD	FINISH: -	WEIGHT: -	A100779C=2007473
CUSTOMER DRAWING		SCALE: 3:1	SHEET 2 OF 4 REV D

REVISIONS				
P.	LTN	DESCRIPTION	DATE	APVD
-	-	SEE SHEET 1	-	-

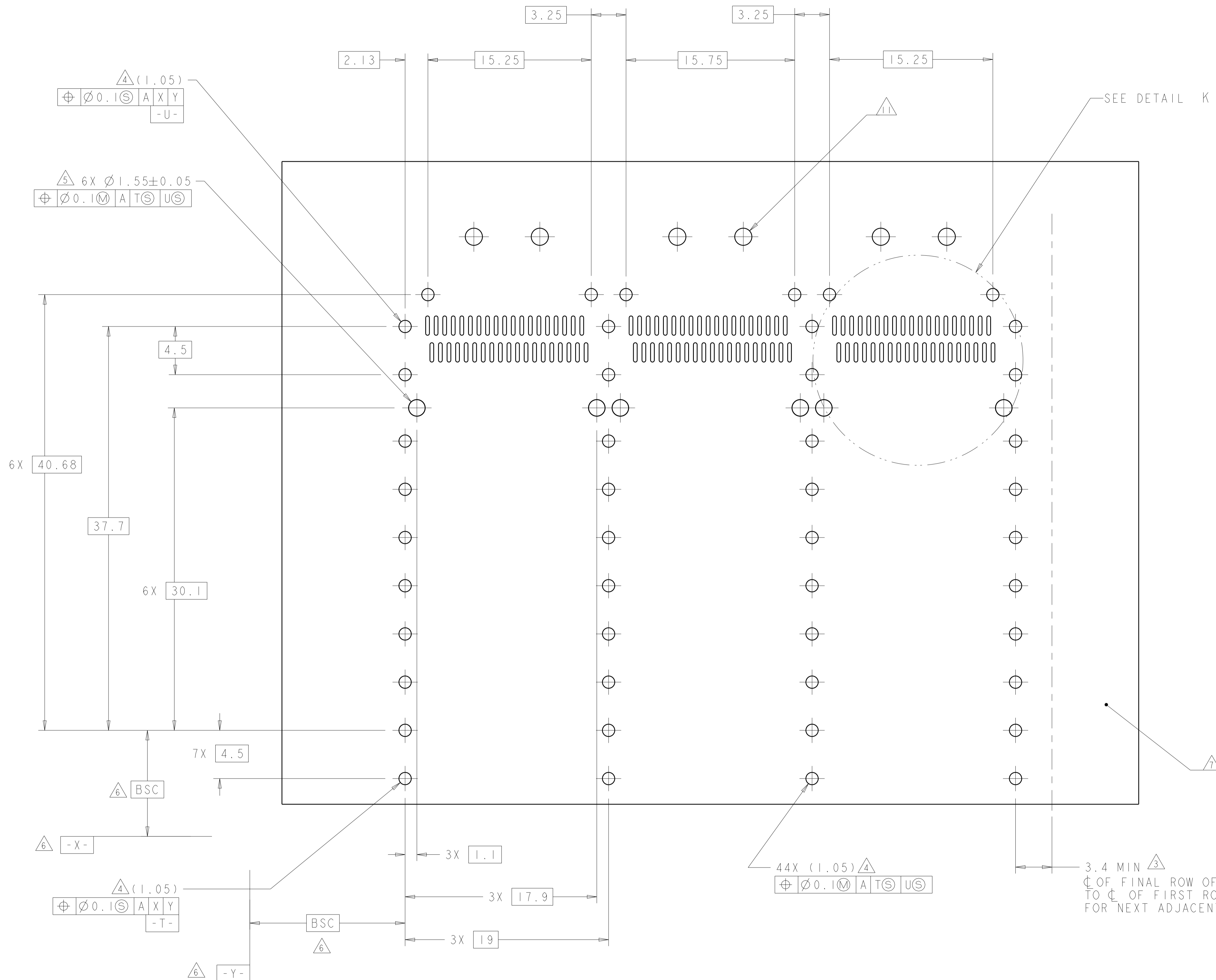


RECOMMENDED PC BOARD LAYOUT
 SINGLE SIDE MOUNT CONFIGURATION
 SCALE 5:1

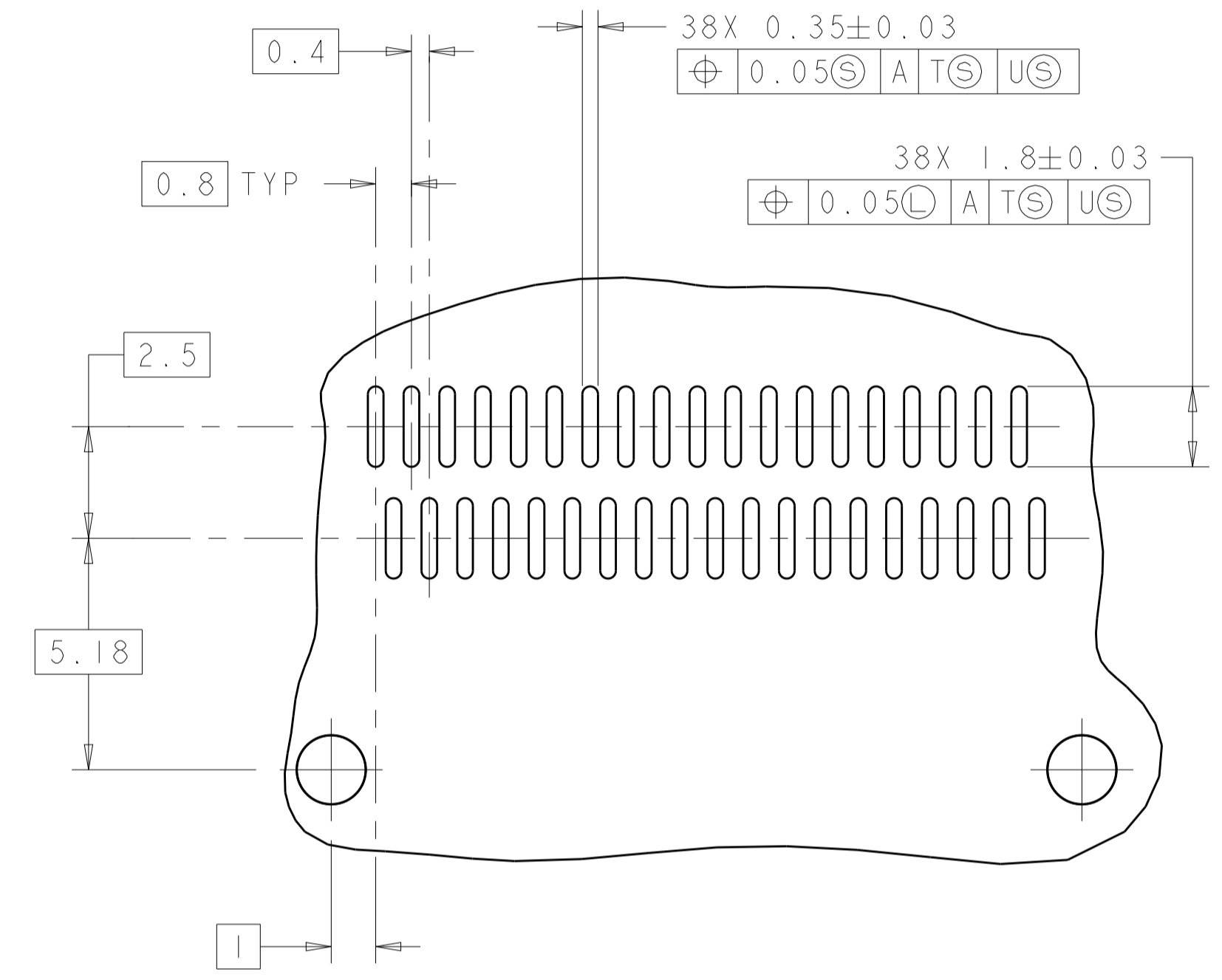
THIS PRODUCT HAS NOT COMPLETED VALIDATION/QUALIFICATION TESTING

THIS DRAWING IS A CONTROLLED DOCUMENT.		DWN C. VALENTIN	Z1NOV2007		TE Connectivity
DIMENSIONS: mm		CHK E. BRIGHT	Z1NOV2007		NAME 1X3 CAGE ASSEMBLY, W/ LIGHT PIPE BRACKET, BEHIND BEZEL, QSFP
TOLERANCES UNLESS OTHERWISE SPECIFIED:		APVD E. BRIGHT	Z1NOV2007	PRODUCT SPEC 108-2286	RESTRICTED TO
0 PLC ±0.1				APPLICATION SPEC 114-13218	SIZE A100779C=2007473
1 PLC ±0.1				WEIGHT	SCALE 3:1
2 PLC ±0.13				CUSTOMER DRAWING	SHEET 3 OF 4
3 PLC ±0.001					REV D
4 PLC ±0.001					
ANGLES					
MATERIAL TBD					
FINISH					

REVISIONS				
P.	LTN.	DESCRIPTION	DATE	APVD.
-	-	SEE SHEET 1	-	-



SEE DETAIL K



DETAIL K
 3 PLACE
 SCALE 8:1

RECOMMENDED PC BOARD LAYOUT
 BELLY TO BELLY CONFIGURATION
 SEE SHEET 3 FOR COMPONENT AND TRACE KEEP-OUTS
 SCALE 5:1

THIS PRODUCT HAS NOT COMPLETED VALIDATION/QUALIFICATION TESTING

THIS DRAWING IS A CONTROLLED DOCUMENT.		DWN C. VALENTINE CHK E. BRIGHT APVD E. BRIGHT	Z1NOV2007 Z1NOV2007 Z1NOV2007	TE Connectivity
DIMENSIONS:	TOLERANCES UNLESS OTHERWISE SPECIFIED:	PRODUCT SPEC 108-2286 APPLICATION SPEC 114-13218		
mm	0 PLC ±0.1 2 PLC ±0.1 3 PLC ±0.013 4 PLC ±0.0001	NAME 1X3 CAGE ASSEMBLY, W/ LIGHT PIPE BRACKET, BEHIND BEZEL, QSFP		RESTRICTED TO A100779C=2007473
MATERIAL	FINISH	SIZE CAGE CODE DRAWING NO WEIGHT CUSTOMER DRAWING		
TBD	-	SCALE 3:1 SHEET 4 OF 4 REV D		

单击下面可查看定价，库存，交付和生命周期等信息

[>>TE Connectivity\(泰科\)](#)