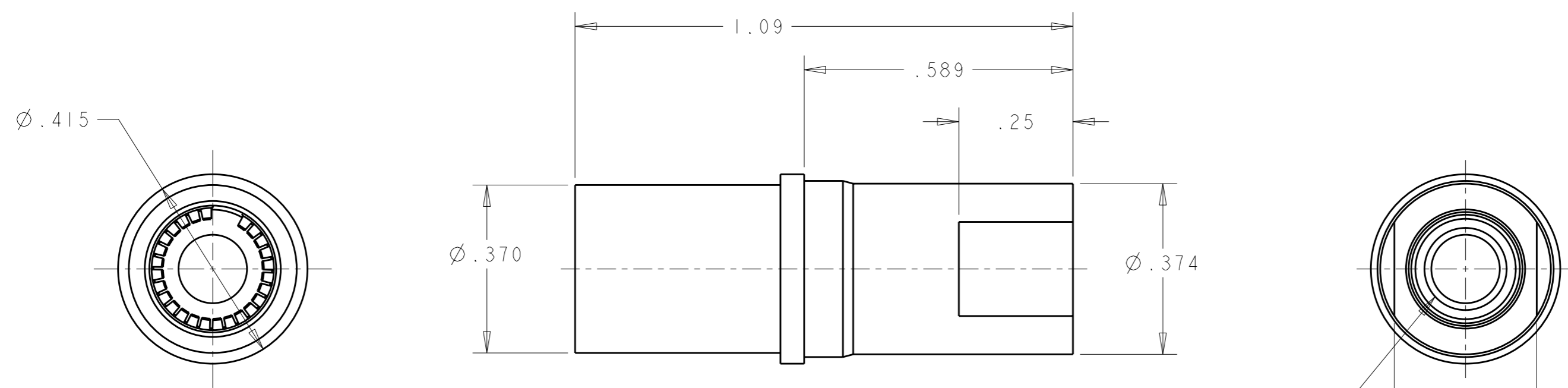


THIS DRAWING IS UNPUBLISHED. RELEASED FOR PUBLICATION 20  
 © COPYRIGHT 20 BY TYCO ELECTRONICS CORPORATION. ALL RIGHTS RESERVED.

LOC	DIST	REVISIONS			
P	LTR	DESCRIPTION	DATE	DWN	APVD
GP	00	A	RELEASED	30JAN2012	RG DO



1. PART NUMBER AND/OR DESIGN CHANGES AFFECTING ITEM INTERCHANGEABILITY REQUIRE PRIOR TYCO ELECTRONICS APPROVAL AND AUTHORIZATION BY REVISION TO THIS PART.

2 MATERIAL:  
 SOCKET BODY - COPPER ALLOY  
 CROWN BAND - BERYLLIUM COPPER

3 FINISH:  
 SOCKET BODY - SILVER PLATE .000100 MIN THK. OVER  
 NICKEL PLATE .000050 MIN THK.  
 CROWN BAND - GOLD PLATE .000030 MIN THK. OVER  
 NICKEL PLATE .000050 MIN THK.

4. ITEMS PROVIDED TO THIS SPECIFICATION TO BE PERMANENTLY IDENTIFIED ON THE CONTAINER PER THE FOLLOWING LABEL:  
 YEAR    WEEK   

TYCO ELECTRONICS P/N  
 XXXXXXXX-X

DATE CODE (e.g. 0106)  
 XXXX

AS SHOWN	2085991-1
DESCRIPTION	PART NO.

<small>THIS DRAWING IS A CONTROLLED DOCUMENT FOR TYCO ELECTRONICS CORPORATION IT IS SUBJECT TO CHANGE AND THE CONTROLLING ENGINEERING ORGANIZATION SHOULD BE CONTACTED FOR THE LATEST REVISION.</small>		DWN R.GRZYBOWSKI 30JAN2012 CHK D.ORRIS 30JAN2012 APVD D.ORRIS 30JAN2012		Tyco Electronics Harrisburg, PA 17105-3608	
DIMENSIONS: INCHES 		TOLERANCES UNLESS OTHERWISE SPECIFIED: 0 PLC ±. 1 PLC ±. 2 PLC ±.02 3 PLC ±.010 4 PLC ±. ANGLES ±.5		NAME: SOCKET CONNECTOR ASSEMBLY SIZE No.4, TAPPED M5, SINGLE CROWN DRAWER	
MATERIAL: <u>  </u> 2		FINISH: <u>  </u> 3		PRODUCT SPEC: 108-2285 APPLICATION SPEC: 114-13206 WEIGHT: -	
CUSTOMER DRAWING				SIZE: A3 CAGE CODE: 300779 DRAWING NO: C-2085991 RESTRICTED TO: -	
SCALE: 4:1				SHEET: 1 OF 1 REV: A	

单击下面可查看定价，库存，交付和生命周期等信息

[>>TE Connectivity\(泰科\)](#)