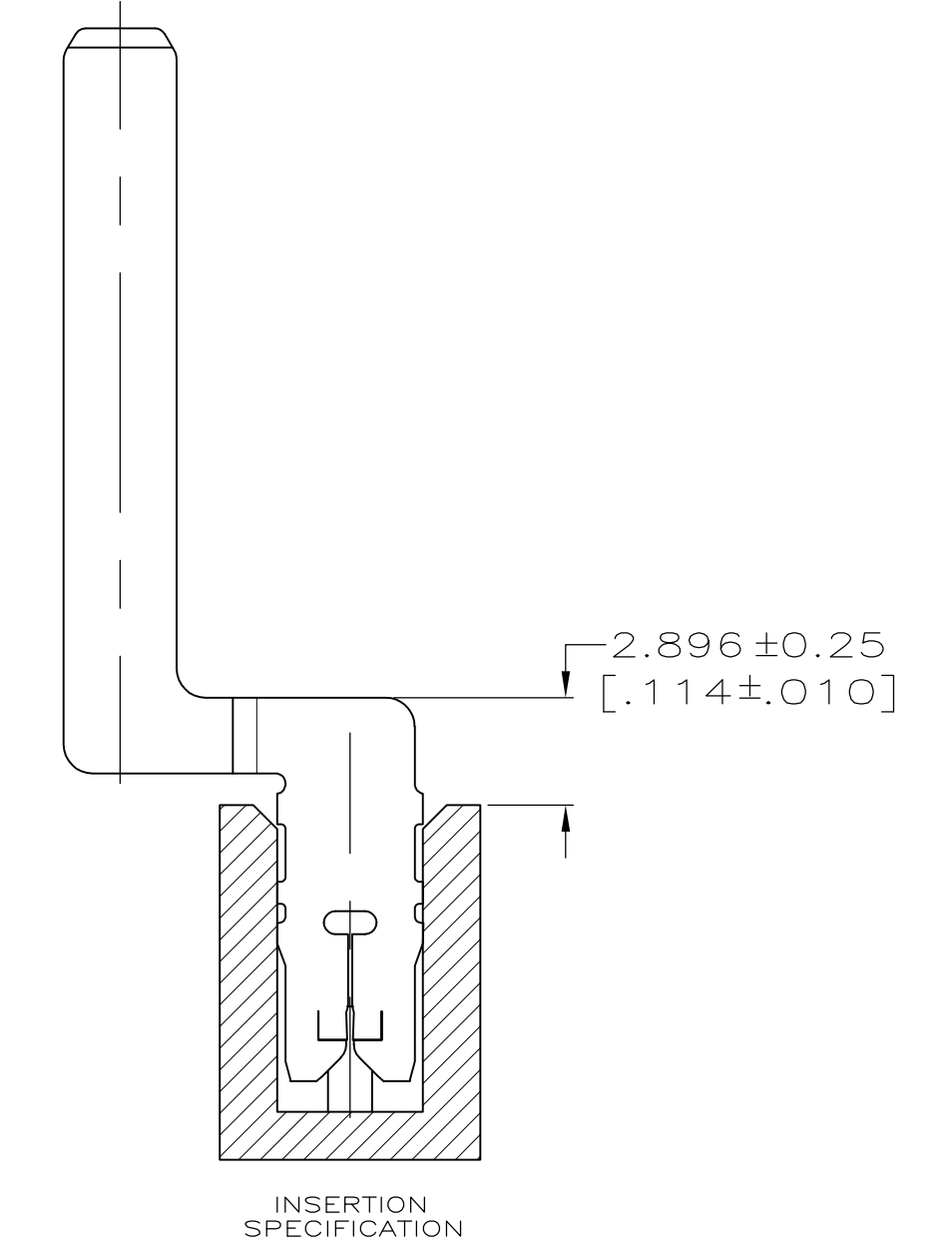
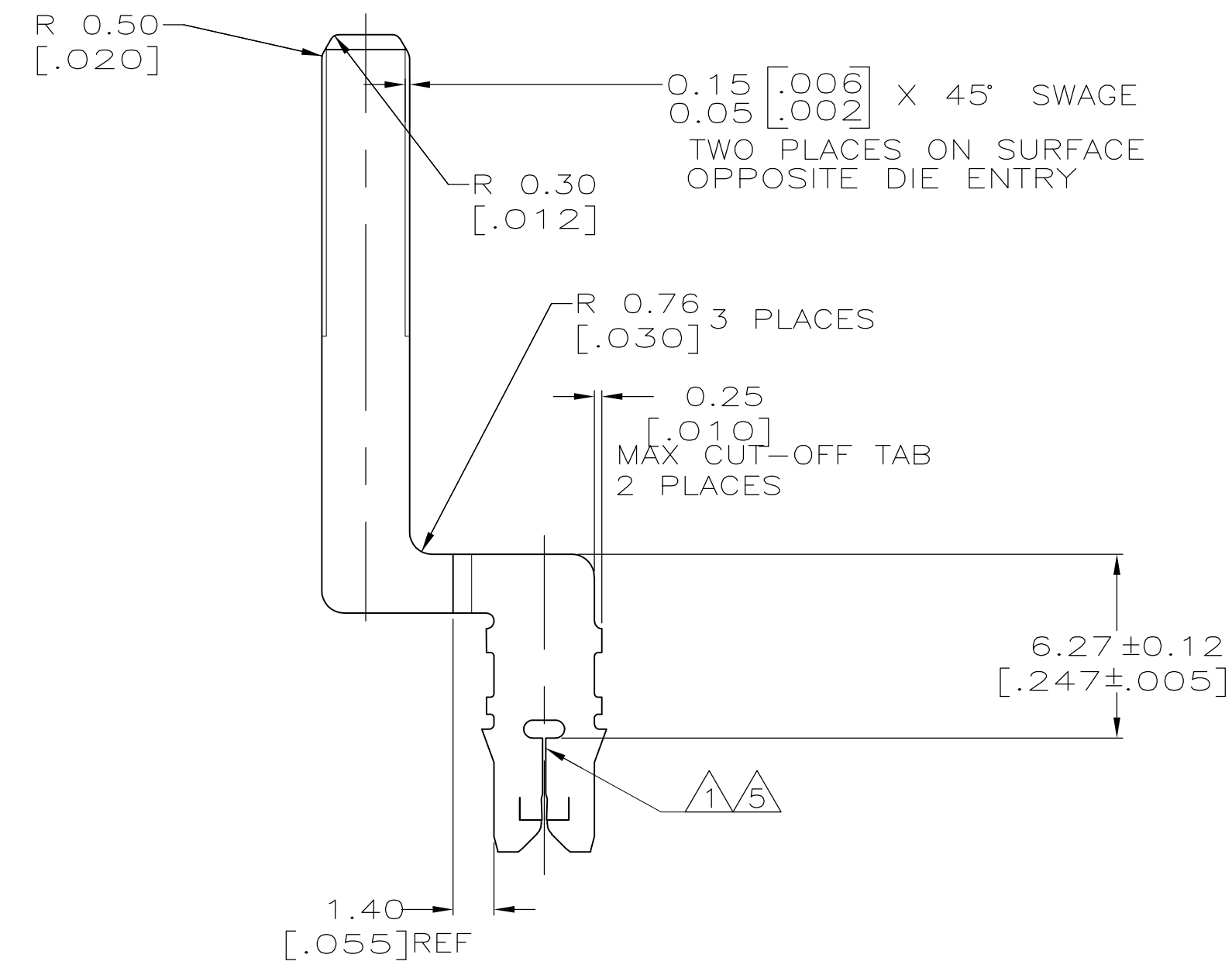
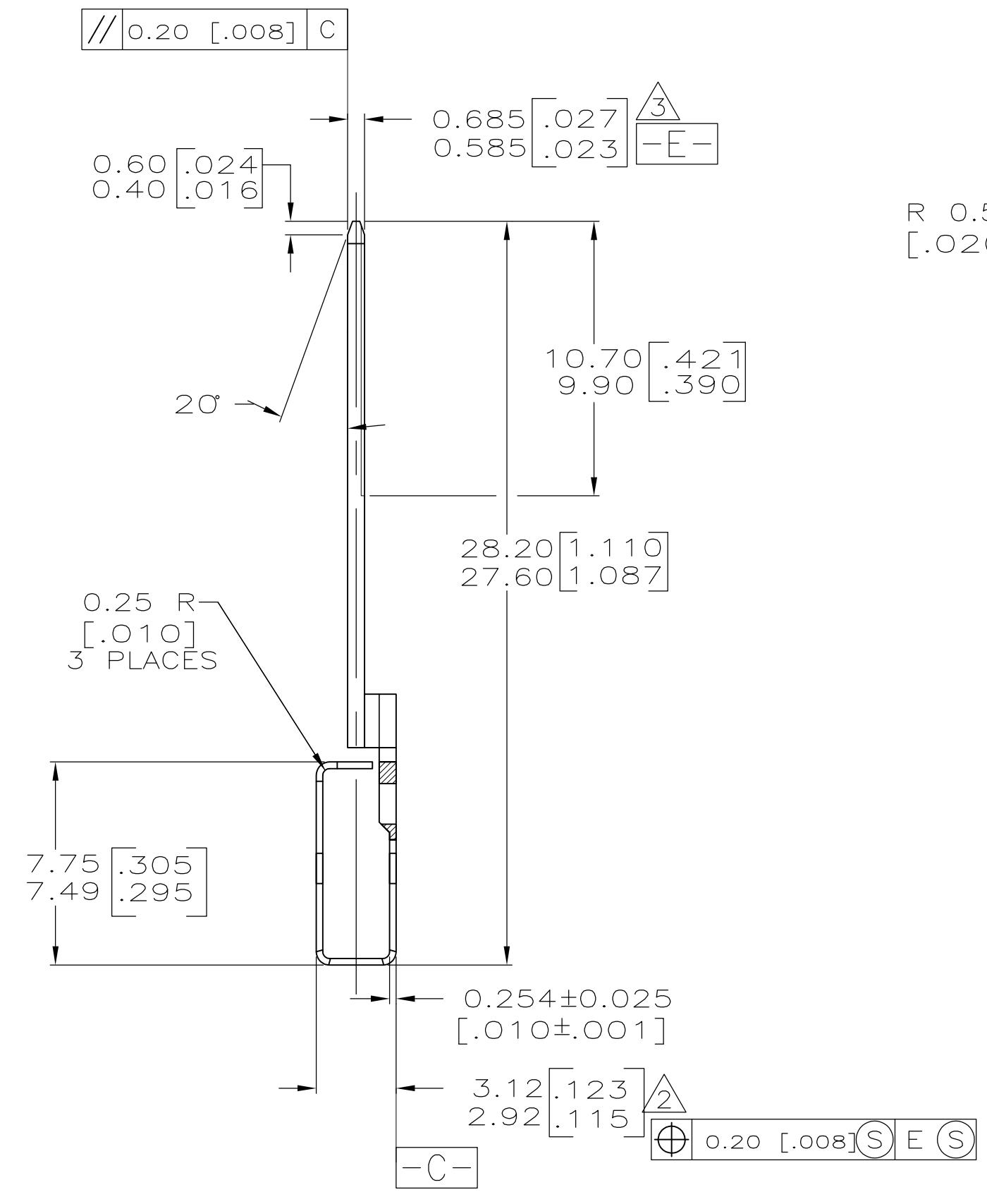
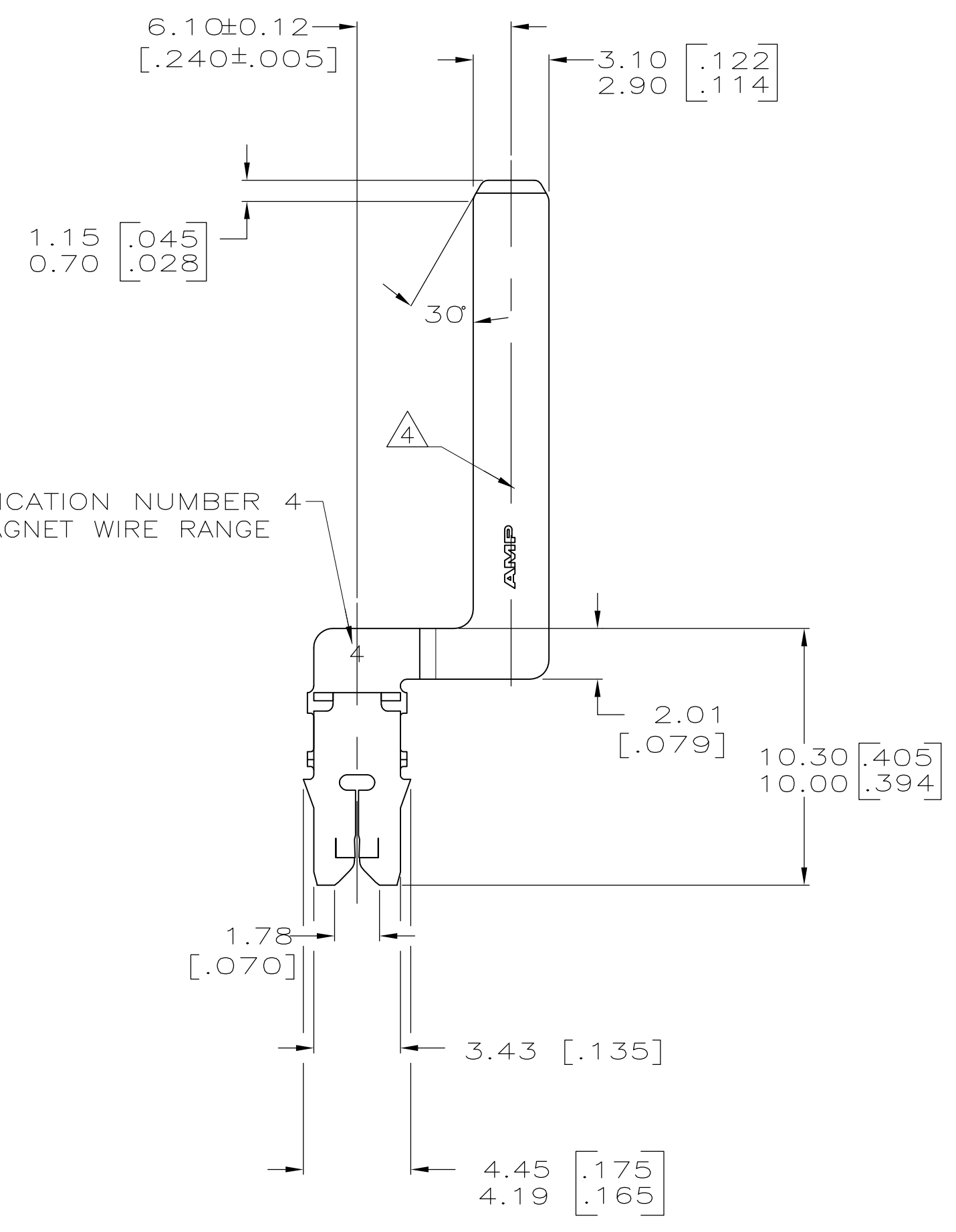
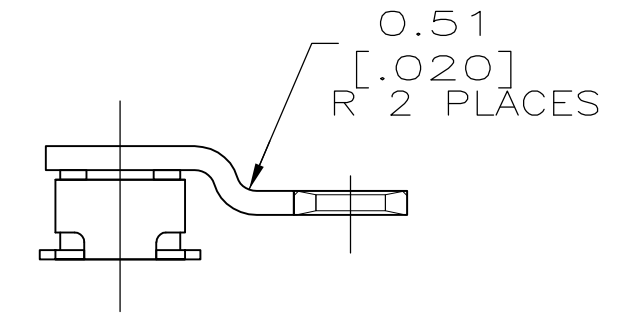
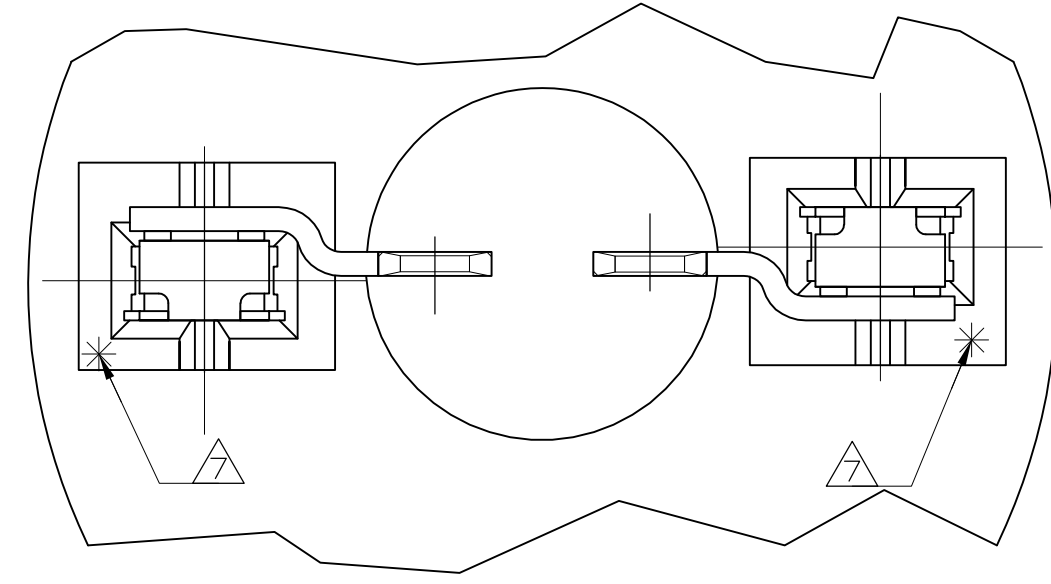


LOC		DIST		REVISONS			
AF	50	REV	DATE	BY	CHK	APPV	
A1	ECO-14-002653		24FEB14	PKS	RRP		

- 1 SLOT TERMINATES A SINGLE 0.20mm DIA [#32] AWG COPPER MAGNET WIRE.
- 2 BOX TO MEET THIS DIMENSION WHEN INSERTED INTO A CAVITY 3.12 [.123] DEEP.
- 3 SYMMETRY TO BE MEASURED AT THE "NOSE" OF THE BOX.
- 4 MEASURE PLATING THICKNESS ON THE TAB; FORMED SIDE OF THE TERMINAL.
- 5 SLOT MUST ACCEPT A 0.089 [.0035] DIA PIN GAGE; SLOT MUST NOT ACCEPT A 0.18 [.007] DIA PIN GAGE. MEASURE ONE BEAM AT A TIME.
- 6 0.001 [.000040] MIN. THICK TIN PLATE
- 7 POINT OF MEASUREMENT, LOCATED APPROXIMATELY AS SHOWN



1217032-1
PART NUMBER

THIS DRAWING IS A CONTROLLED DOCUMENT.		DIN R GRZYBOWSKI 24NOV97		TE Connectivity	
DIMENSIONS: INCHES		CHK M.S.FEHER 24NOV97		NAME NELSON E. NEFF	
TOLERANCES UNLESS OTHERWISE SPECIFIED:		APVD		PRODUCT SPEC	
0 PLC	± -	108-2012		APPLICATION SPEC	
1 PLC	± -	114-2046		RESTRICTED TO	
2 PLC	± 0.18 [.007]	SIZE A1		CAGE CODE 00779	
3 PLC	± -	DRAWING NO. 1217032		SCALE 5:1	
4 PLC	± -	WEIGHT		SHEET 1 OF 1	
ANGLES	± ± 3°	CUSTOMER DRAWING		REV A1	
MATERIAL BRASS	FINISH	CUSTOMER DRAWING		SCALE 5:1	

单击下面可查看定价，库存，交付和生命周期等信息

[>>TE Connectivity\(泰科\)](#)