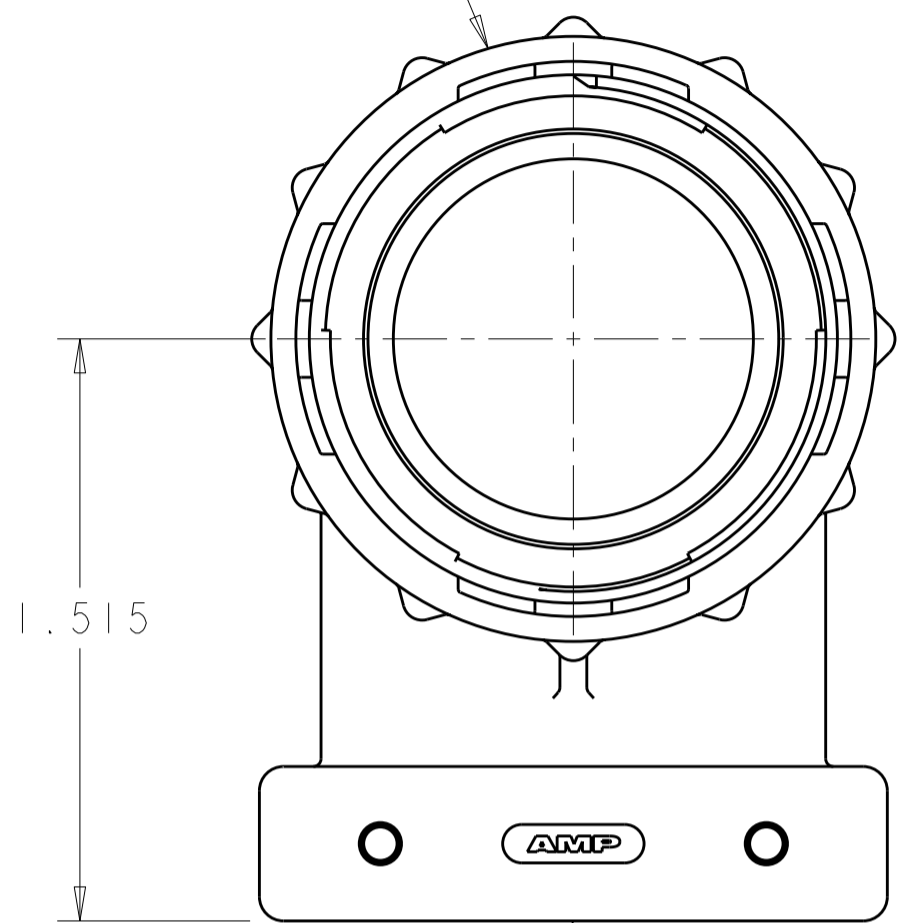


THIS DRAWING IS UNPUBLISHED. RELEASED FOR PUBLICATION  
 © COPYRIGHT 20 BY TYCO ELECTRONICS CORPORATION. ALL RIGHTS RESERVED.

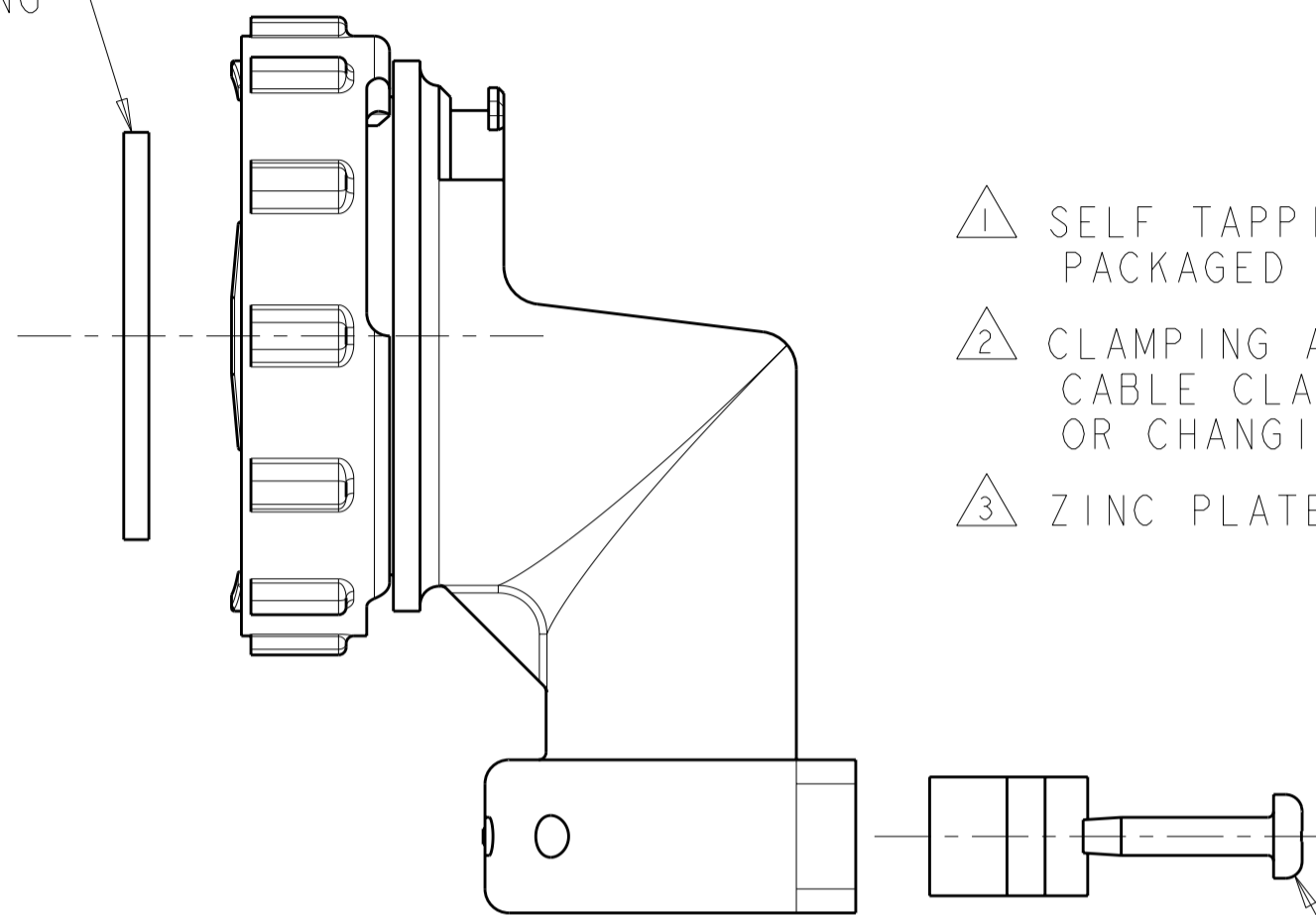
LOC		DIST		REVISIONS			
P	LTR	DESCRIPTION	DATE	DWN	APVD		
	D	REVISED PER ECO-10-012730	20SEP10	HMR	MG		

COUPLING RING  
 NYLON, COLOR:BLACK



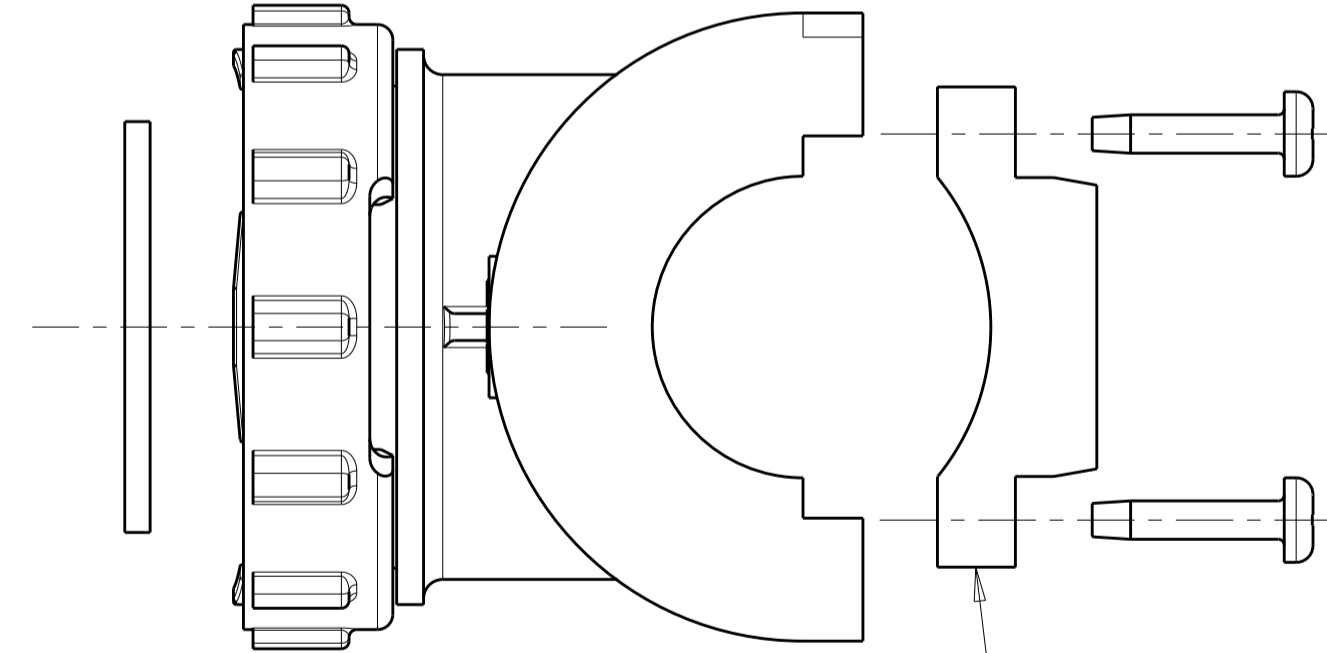
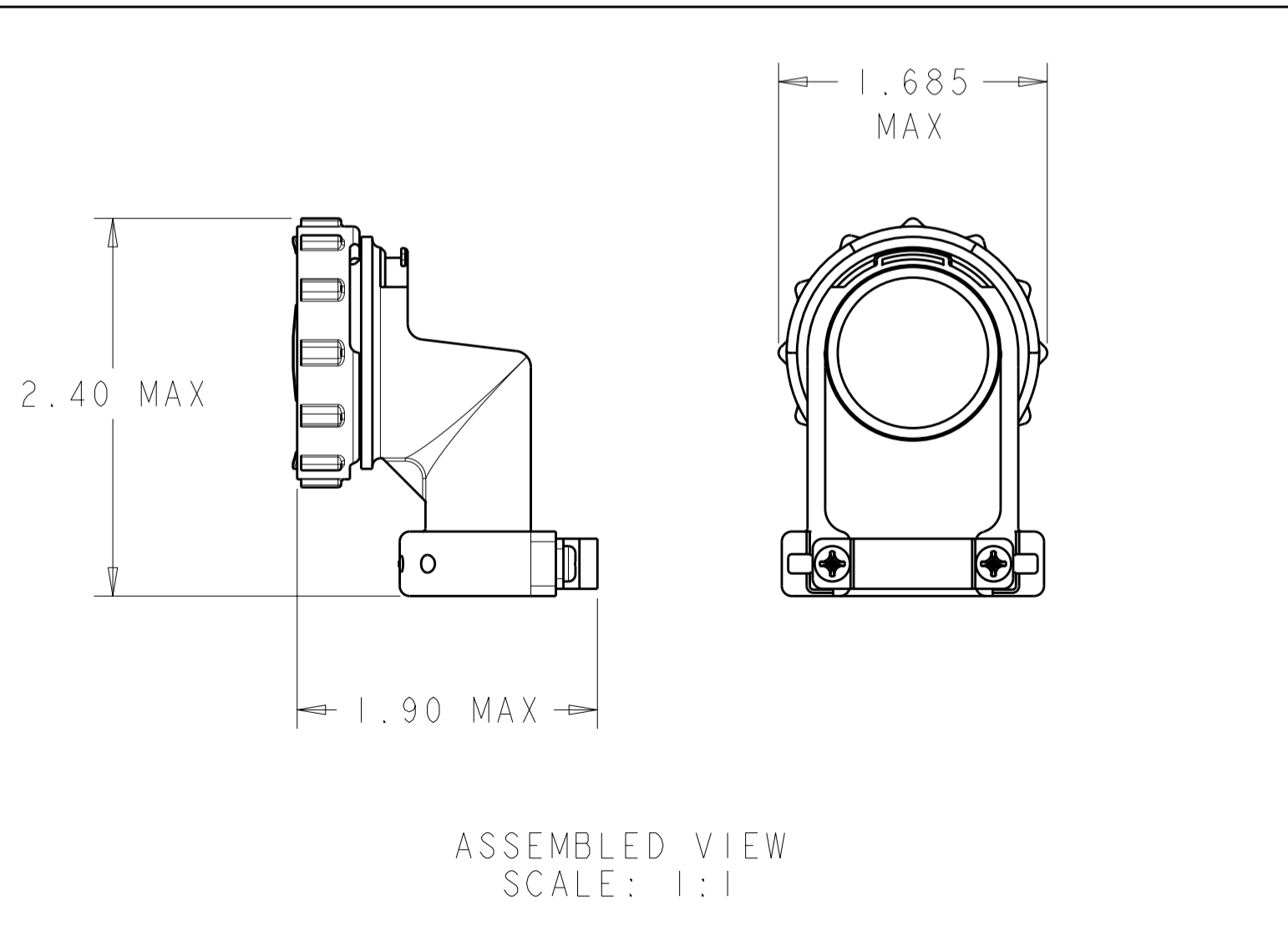
CABLE CLAMP BODY  
 NYLON, COLOR:BLACK

FLAT RING



- ① SELF TAPPING SCREWS AND CABLE CLAMP INSERTS PACKAGED UNASSEMBLED.
- ② CLAMPING AREA ADJUSTABLE TO .703 O.D. MAX CABLE. CABLE CLAMP INSERTS CAN BE ADJUSTED BY INVERTING OR CHANGING CABLE CLAMP INSERT.
- ③ ZINC PLATED NON-HEXAVALENT CHROMATE.

① 5-20 SELF TAPPING SCREW  
 MATERIAL: STEEL  
 FINISH: SEE TABLE  
 QTY: 2  
 LENGTH: .50<sup>+.00</sup><sub>-.05</sub>



CABLE CLAMP INSERT  
 NYLON, COLOR:BLACK  
 QTY: 2

③	796382-2
③	796382-1
SCREW FINISH	PART NUMBER

SUPERSEDED BY -2

<small>THIS DRAWING IS A CONTROLLED DOCUMENT FOR TYCO ELECTRONICS CORPORATION. IT IS SUBJECT TO CHANGE AND THE CONTROLLING ENGINEERING ORGANIZATION SHOULD BE CONTACTED FOR THE LATEST REVISION.</small>		DWN	S. WELDON	19JAN2000	AMP Incorporated Harrisburg, PA 17105-3608
DIMENSIONS: INCHES		CHK	M. CHACKO	19JAN2000	
TOLERANCES UNLESS OTHERWISE SPECIFIED: 0 PLC ±- 1 PLC ±- 2 PLC ±- 3 PLC ±0.005 4 PLC ±- ANGLES ±- FINISH ±-		APVD	M. CHACKO	19JAN2000	
MATERIAL: -		PRODUCT SPEC	-	-	
CUSTOMER DRAWING		APPLICATION SPEC	-	-	NAME
		WEIGHT	-	-	CABLE CLAMP KIT, UNASSEMBLED, RIGHT ANGLE, SIZE 23, CPC
		SCALE	2:1	SHEET	1 OF 1
		RESTRICTED TO	-	REV	D

单击下面可查看定价，库存，交付和生命周期等信息

[>>TE Connectivity\(泰科\)](#)