

SAFETY ORGANIZATION(S).
 THIS FILTER HAS BEEN FORMALLY RECOGNIZED, CERTIFIED OR APPROVED BY THE LISTED AGENCY. THEREFORE, ALL TEST/REQUIREMENTS SPECIFIED IN THE LATEST REVISION OF THE FOLLOWING AGENCY STANDARDS HAVE BEEN MET.

UL 1283
 CSA 22.2 NO. 0, 0.4, 8

OPERATING SPECIFICATIONS.

LINE VOLTAGE/CURRENT, 45 OR 60 AMP., 250VAC PHASE/NEUTRAL-GND
 45 OR 60 AMP., 440VAC PHASE/PHASE
 50-60HZ
 LINE FREQUENCY, 40°C
 MAX. CASE RISE RATED CURRENT, 1.4mA @ 120V 60HZ
 MAX. LEAKAGE CURRENT, EACH 3.4mA @ 250V 50HZ
 LINE TO GROUND
 OPERATING AMBIENT TEMP. RANGE, -10°C TO +40°C @ RATED CURRENT, I_r
 IN AN AMBIENT, T_a, HIGHER THAN 40°C, THE MAXIMUM OPERATING CURRENT, I_o, IS AS FOLLOWS:

$$I_o = I_r \sqrt{\frac{55 - T_a}{45}}$$

RELIABILITY SPECIFICATIONS.

STORAGE TEMPERATURE, -25°C TO +85°C
 HUMIDITY, 21 DAYS @ 40°C 95% RH

TEST SPECIFICATIONS.

INDUCTANCE, 45A = 1.1mH NOMINAL 60A = 0.74mH NOMINAL
 GROUND CHOKES, 45A = .267mH NOMINAL 60A = .242mH NOMINAL
 CAPACITANCE, (MEASURED @ 1 KHZ, 0.25 VAC MAX., 25°C ±1°C)
 PHASE/NEUTRAL TO GROUND, .026µF ±20%
 PHASE TO NEUTRAL, 2.0µF ±20%
 DISCHARGE RESISTOR, 165K OHMS
 LINE/GROUND AND LINE/LINE, 6000 Oh (MIN) AT 100 VDC
 INSULATION RESISTANCE (W/O DISCHARGE RESISTOR) 20°C AND 50% RH
RECOMMENDED RECEIVING INSPECTION HIPOT.
 PHASE/NEUTRAL TO GROUND, 1500 VAC FOR 1 MINUTE
 PHASE TO NEUTRAL, 1450 VDC FOR 1 MINUTE

FILTER APPROVAL.
 THE BEST WAY TO SELECT AND QUALIFY A FILTER IS FOR YOUR ENGINEERING TO TEST THE UNIT IN YOUR EQUIPMENT.

TOLERANCE EXCEPT AS NOTED
 DECIMAL, .XXX .XX .X ANGLES ±1°
 ENGLISH, ±.030
 METRIC, ±

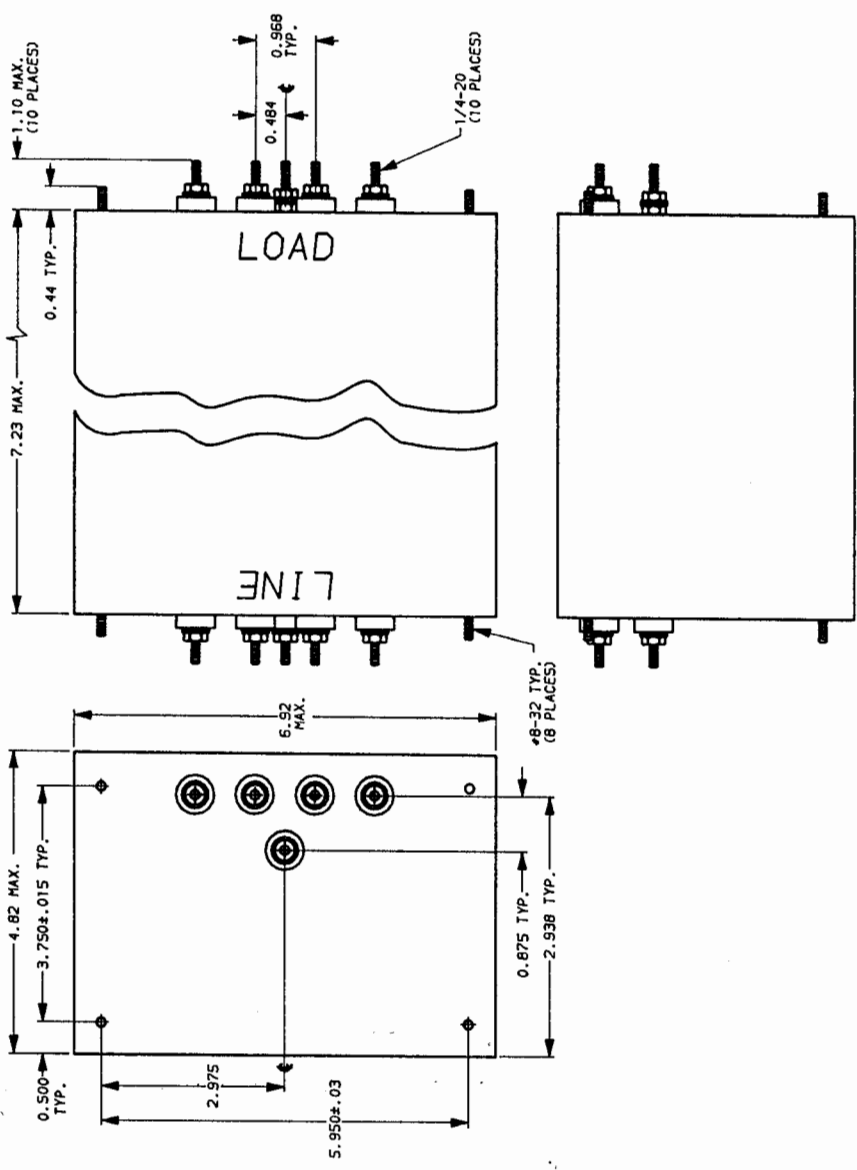
MATERIAL: AS SUPPLIED

FINISH:

SCALE	DATE	DRG. NO.	REV.
NTS	4-25-89	45AYP6C & 60AYP6C	2
DRW. BY	LJD	CFM	



POWER LINE FILTER

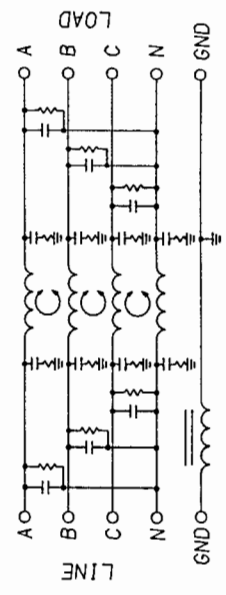


NOTE: COMMON MODE A-B-C & N SHORTED TOGETHER.
 DIFF. MODE MEASURED N TO A-B-C SHORTED TOGETHER.

FREQUENCY MHZ	.05	.15	.5	1.0	5.0	10.0	30.0
COMMON	45A	5	25	49	49	56	58
DIFF.	60A	5	22	50	50	54	54
	45A	8	27	60	65	65	65
	60A	20	27	60	65	65	65

This document is proprietary to CORCOM INC. and is not to be reproduced nor used for manufacturing purposes except on CORCOM's order or prior written consent.

NOTES:
 1.) LINE SIDE HAS INSULATED GROUND TERMINAL.



单击下面可查看定价，库存，交付和生命周期等信息

[>>TE Connectivity\(泰科\)](#)