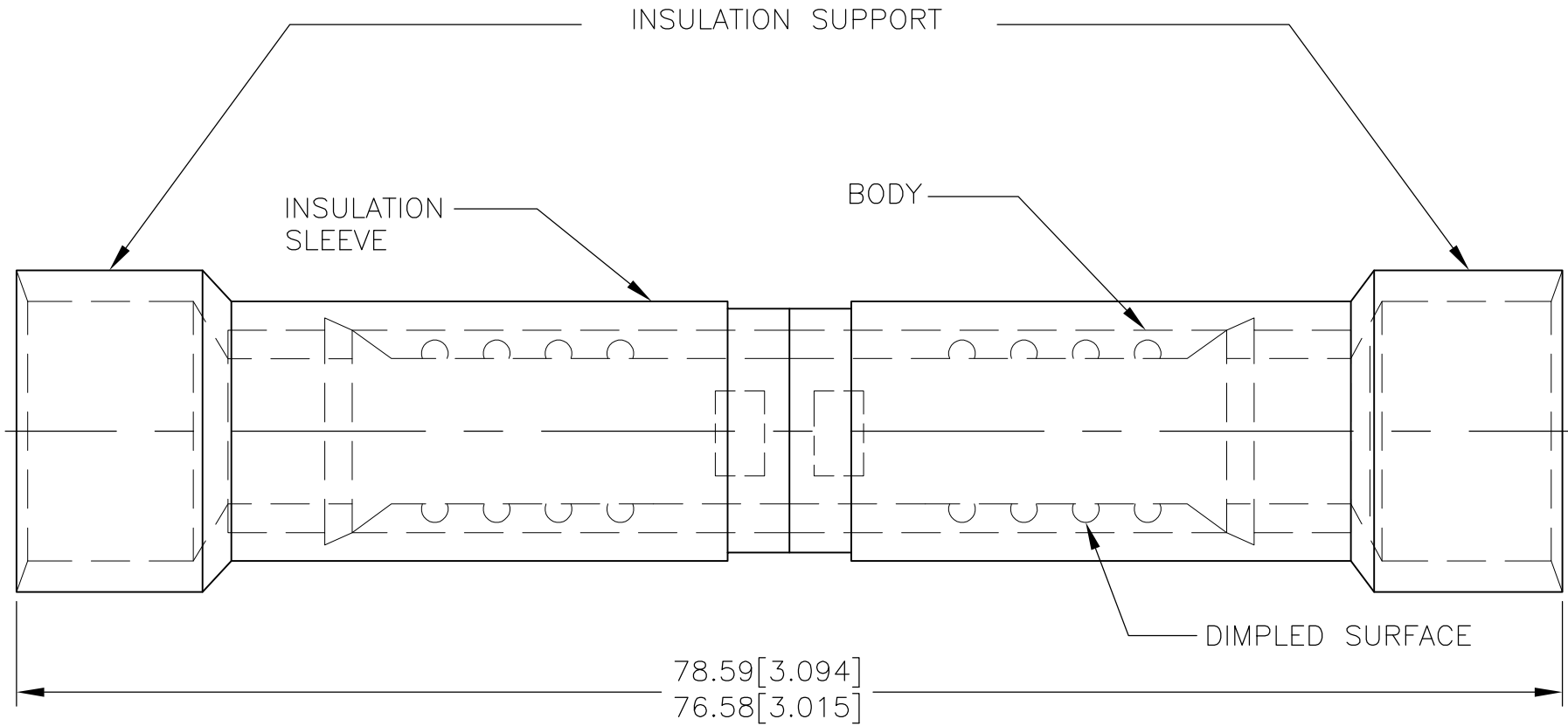


LOC	DIST	REVISIONS					
G	14	P	LTR	DESCRIPTION	DATE	DWN	APVD
		F		REVISED PER ECO-14-019230	04APR2015	NK	DR

AMP
 WIRE RANGE
 2 AWG
 STRANDED



1 WIRE INSULATION DIA 15.11 [.595] MAX.

OBSOLETE

AMP INCORPORATED
CUSTOMER SERVICE SYSTEMS

FOR ADDITIONAL PRODUCT INFORMATION OR COPIES OF DRAWINGS AND TECHNICAL DOCUMENTS	PRODUCT INFORMATION CENTER 1-800-522-6752
FOR APPLICATION TOOLING INFORMATION	TOOLING ASSISTANCE CENTER 1-800-722-1111
FOR ORDER ENTRY	1-800-526-5142

MAX RECOMMENDED OPERATING TEMPERATURE:
 105° C

VOLTAGE RATING:
 600 V MAX

CIRCULAR MIL AREA:
 26.65-42.41mm² [52,600-83,700] STRANDED

THIS DRAWING IS A CONTROLLED DOCUMENT.

DIMENSIONS: mm [INCHES]	TOLERANCES UNLESS OTHERWISE SPECIFIED:
	0 PLC ± -
	1 PLC ± -
	2 PLC ± 0.20 [.008]
	3 PLC ± -
	4 PLC ± -
	ANGLES ± -

MATERIAL: COPPER PER ASTM B-152 NYLON, COLOR:RED
 FINISH: TIN PLATE PER MIL-T-10727

DWN	S.S. GOULDEN	8-30-93
CHK	R. HERSEY	8-30-93
APVD	B. BARE	8-30-93
PRODUCT SPEC	-	
APPLICATION SPEC	-	
WEIGHT	-	

50	LOOSE PC	324663
QTY	PACKAGE TYPE	PART NO

TE TE Connectivity

NAME: SPLICE, BUTT, MULTIPLE TO MULTIPLE, TERMINYL, WIRE SIZE: 2 AWG

SIZE	CAGE CODE	DRAWING NO	RESTRICTED TO
A3	00779	C-324663	-

CUSTOMER DRAWING

SCALE	SHEET	REV
NTS	1 of 1	F

单击下面可查看定价，库存，交付和生命周期等信息

[>>TE Connectivity\(泰科\)](#)