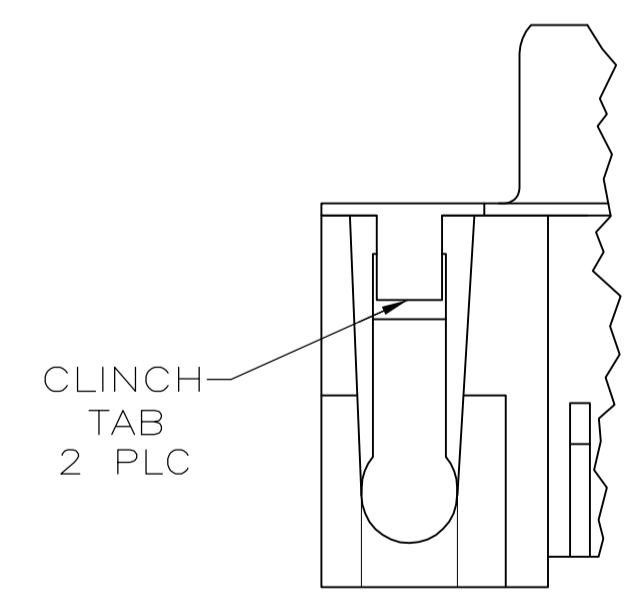
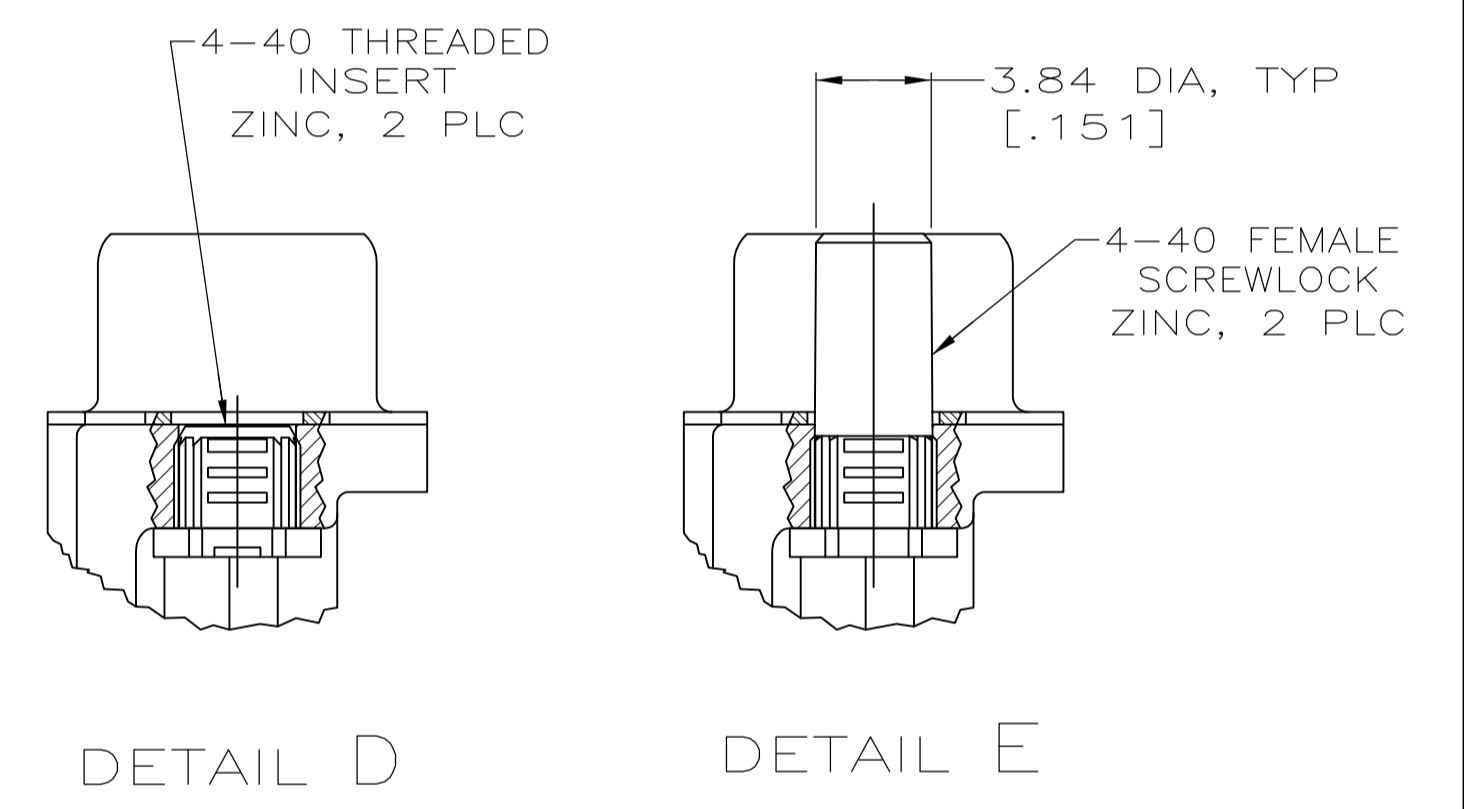
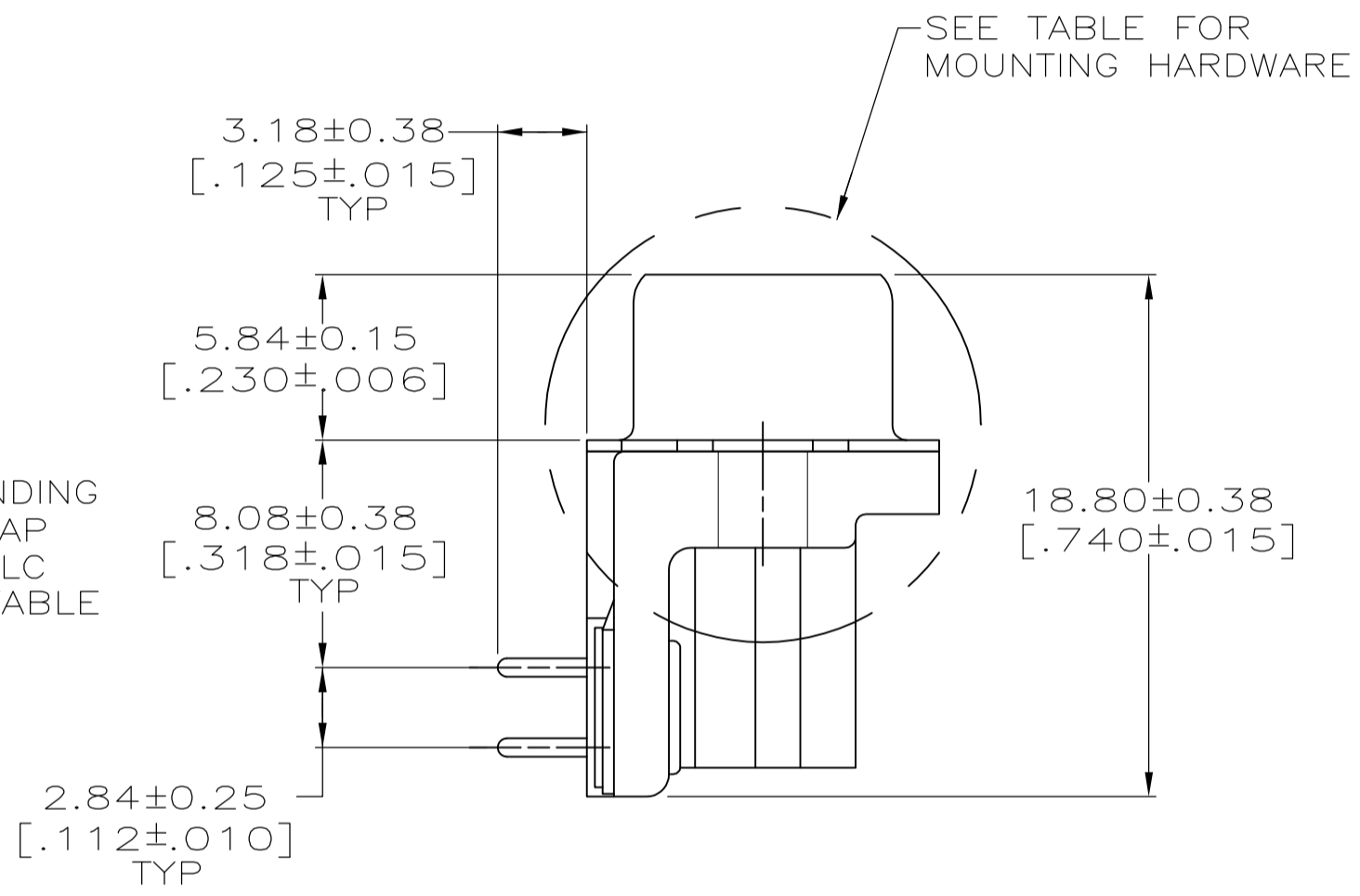
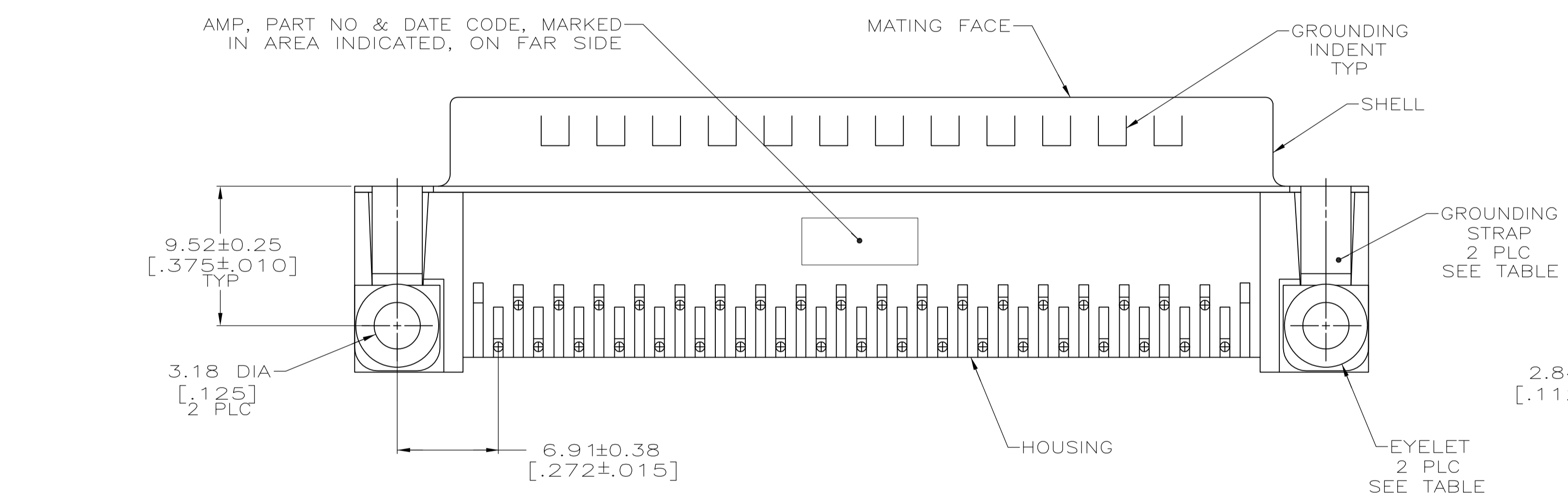
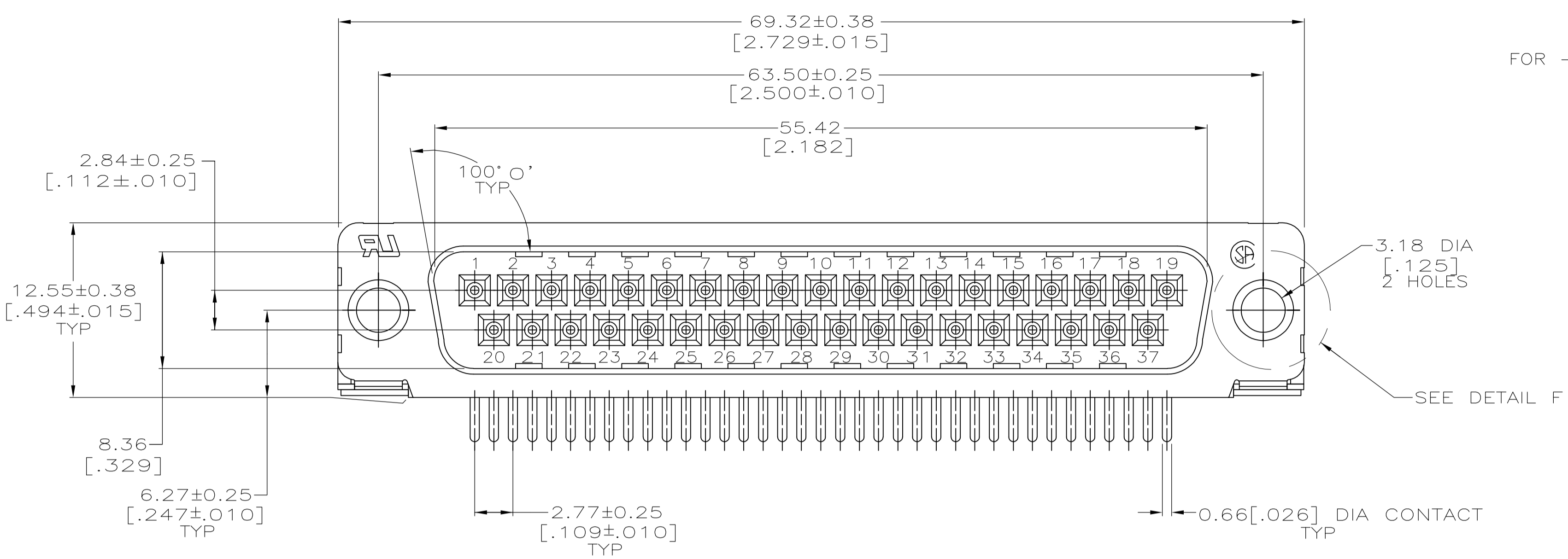


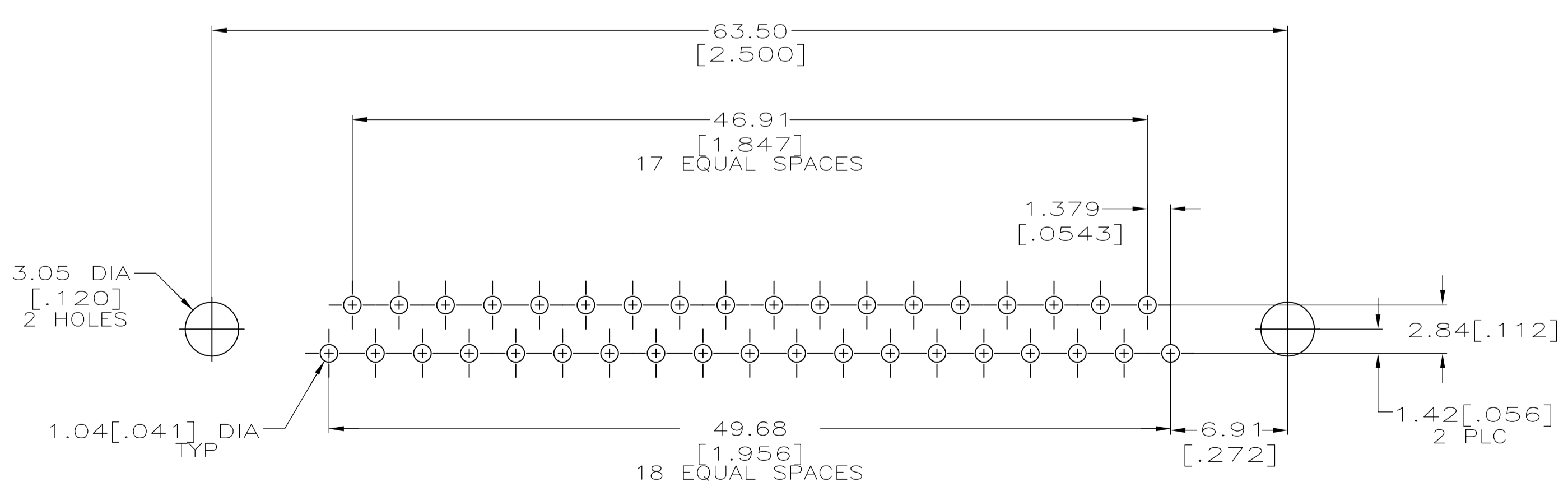
FOR -5, -6, -11 AND -12 ONLY

DETAIL F  
2 PLC

- ① HOUSING: BLACK NYLON OR POLYESTER, FLAME RETARDANT, UL 94V-0 RATED, GLASS FILLED. CONTACTS: BRASS. SHELLS: CARBON STEEL. EYELETS: BRASS.
- ② SHELLS: 2.54μm[.000100] MIN TIN OVER 1.27μm[.000050] MIN COPPER. EYELETS: 5.08μm[.000200] MIN TIN OVER COPPER FLASH. CONTACTS: SEE TABLE. SCREWLOCK AND INSERT: CLEAR CHROMATE.
- ③ GOLD FLASH ON THE MATING SURFACES, 2.54μm[.000100] MIN TIN OR TIN-LEAD PLATE ON THE SOLDER END, 1.27μm[.000050] MIN NICKEL UNDERPLATE ON THE ENTIRE CONTACT.
- ④ 0.76μm[.000030] MIN GOLD PLATE ON THE MATING SURFACES, 2.54μm[.000100] MIN TIN OR TIN-LEAD PLATE ON THE SOLDER END, 1.27μm[.000050] MIN NICKEL UNDERPLATE ON THE ENTIRE CONTACT  
-OR-  
GOLD FLASH OVER PALLADIUM-NICKEL PLATE, 0.76μm[.000030] MIN TOTAL ON THE MATING SURFACES, 2.54μm[.000100] MIN TIN OR TIN-LEAD PLATE ON THE SOLDER END, 1.27μm[.000050] MIN NICKEL UNDERPLATE ON THE ENTIRE CONTACT.
- ⑤ OBSOLETE PART NUMBER.
- ⑥ SUPERSEDED BY 747252-4.
- ⑦ SUPERSEDED BY 747252-6.
- ⑧ SUPERSEDED BY 747843-6.



DETAIL B



RECOMMENDED P.C. BOARD MOUNTING DIMENSIONS

NO SEE DETAIL B	NO	SEE DETAIL E	④	⑧	1-747252-2
		SEE DETAIL D	④	⑧	1-747252-1
YES	YES	-	④	⑧	1-747252-0
		-	④	⑧	747252-9
		SEE DETAIL E	④	⑧	747252-8
		SEE DETAIL D	④	⑧	747252-7
GROUNDING STRAPS	EYELETS	SEE DETAIL E	④	⑧	747252-6
		SEE DETAIL D	④	⑧	747252-5
		-	④	⑧	747252-4
		-	④	⑧	747252-3
MOUNTING HARDWARE	CONTACT FINISH	-	④	⑧	747252-2
		-	④	⑧	747252-1
PART NUMBER					

THIS DRAWING IS A CONTROLLED DOCUMENT. DIMENSIONING AND TOLERANCING PER ASME Y14.5M-2009.

DIMENSIONS:	TOLERANCES UNLESS OTHERWISE SPECIFIED:	DWG: W.G. LENKER 07-NOV-89	REV: R. STONE 05-FEB-90	NAME: M.D. GALLOWAY 06-FEB-90
0 PLC ± -	1 PLC ± -	APPROVED: M.D. GALLOWAY		
2 PLC ± -	3 PLC ± 0.13(.005)	PRODUCT SPEC: 108-40025		
4 PLC ± -	ANGLES ± 2° 0'	APPLICATION SPEC: 114-40010		
MATERIAL: ①	FINISH: ②	SIZE: A1	CAGE CODE: 00779	DRAWING NO: 747252
CUSTOMER DRAWING		SCALE: 4:1	SHEET: 1 OF 1	REV: U

STE TE Connectivity  
PLUG ASSEMBLY, SIZE 4, 37 POSITION, RIGHT ANGLE, FRONT METAL SHELL, .318 SERIES, AMPLIMITE® HD-20

单击下面可查看定价，库存，交付和生命周期等信息

[>>TE Connectivity\(泰科\)](#)