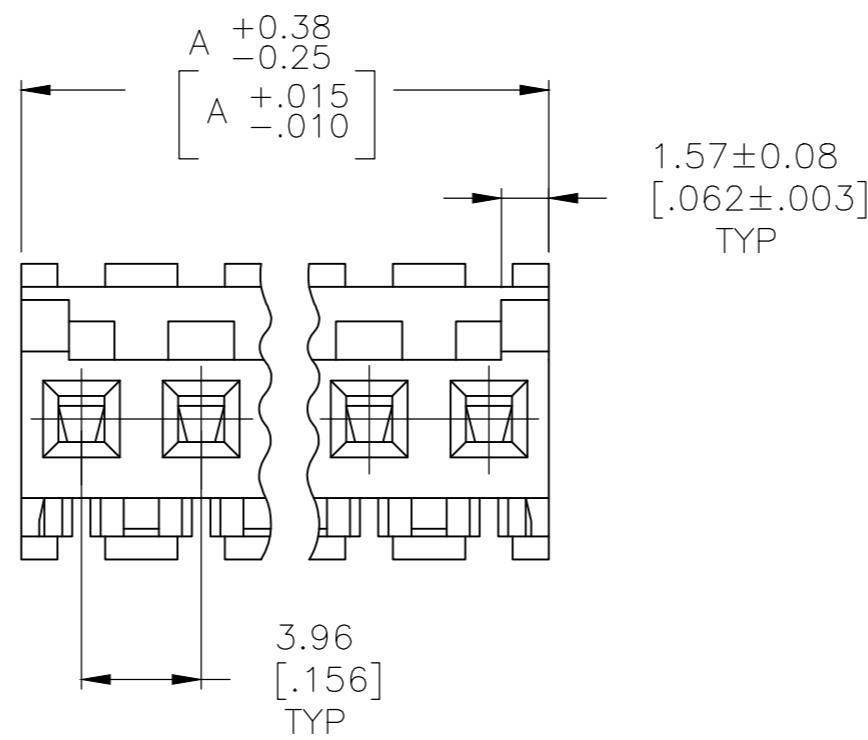
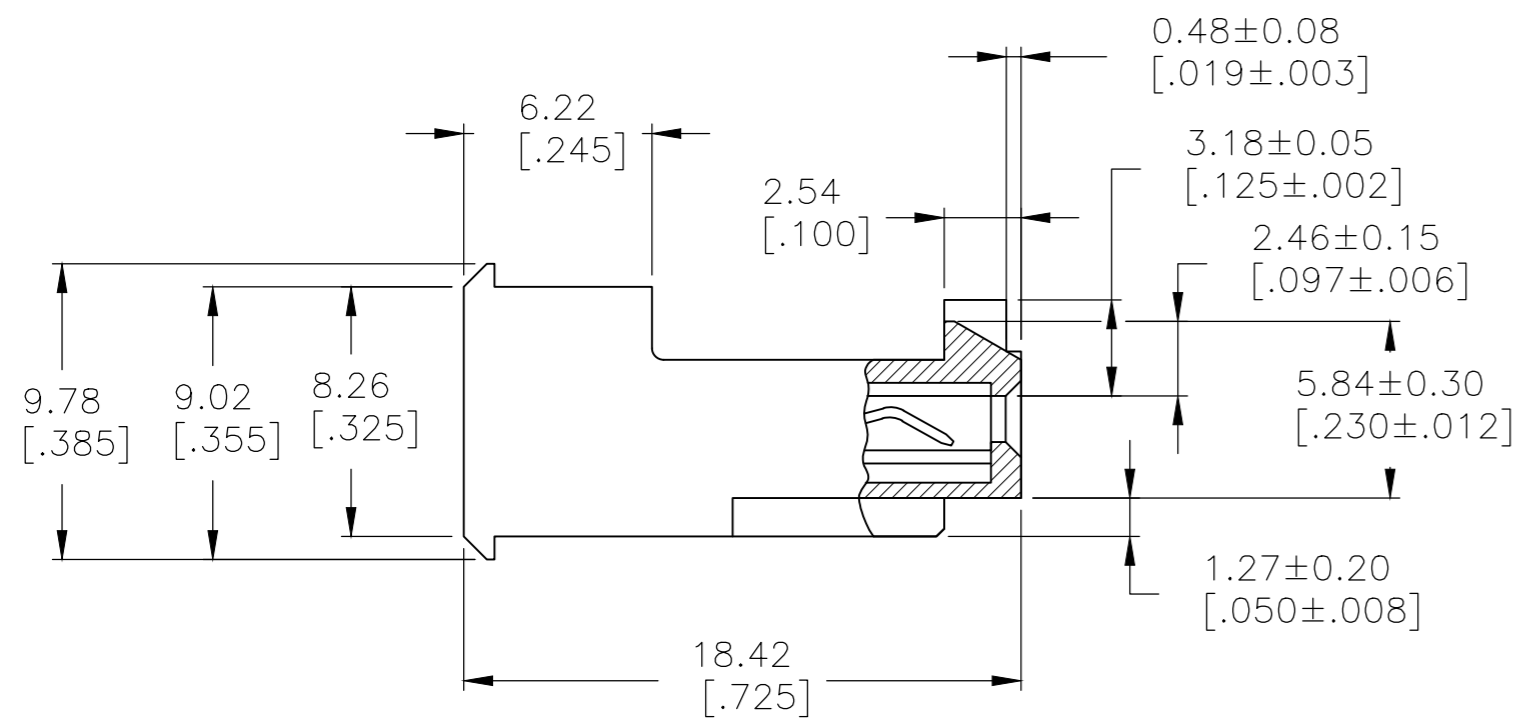
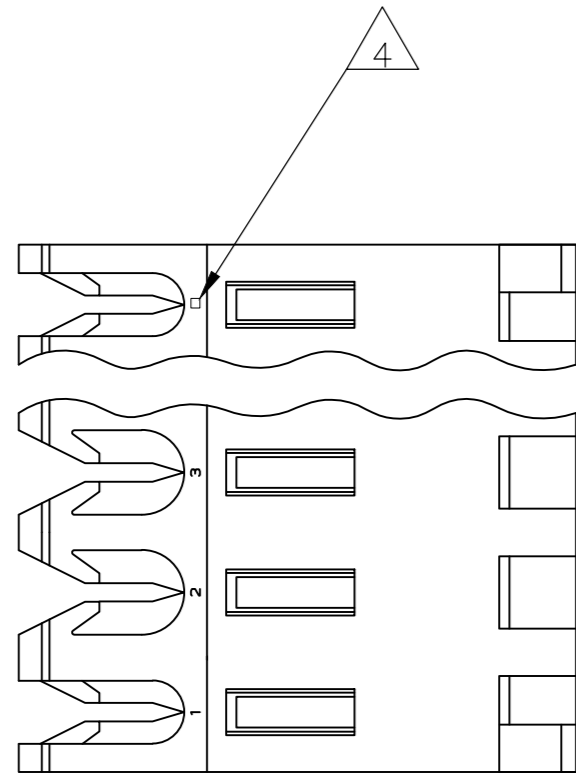


THIS DRAWING IS UNPUBLISHED. RELEASED FOR PUBLICATION
 © COPYRIGHT - By - TE CONNECTIVITY ALL RIGHTS RESERVED.

LOC		DIST		REVISIONS			
P	LTR	DESCRIPTION		DATE	DWN	APVD	
CM	54	E		REVISED PER ECR-20-000822	27MAY2020	PC SW	

- 1 MATERIAL: CONNECTOR - NYLON UL94V-2 (RED).
CONTACTS - 0.30[.012] THICK COPPER ALLOY
(BRIGHT TIN-LEAD 0.00203[.000080] MIN. THICK FOR CONTACTS 644467-2 THRU 1-644467-4)
(MATTE WHISKER MITIGATED TIN 0.00203[.000080] MIN THICKNESS OVER NICKEL UNDERPLATE FOR 3-644467-2 THRU 4-644467-4).
- 2 CONTACTS ACCEPT 22 AWG WIRE WITH 2.41[.095] MAX INSULATION DIAMETER.
- 3 CONTACTS MUST ACCEPT 1.14±0.03[.045±.001] SQUARE POST AND REMAIN LOCKED IN POSITION.
- 4 IDENTIFICATION NUMBER FOR LAST CIRCUIT MAY NOT APPEAR ON ALL ASSEMBLIES.
- 5 DIMENSIONS IN BRACKETS ARE IN INCHES.
- 6 HOUSING FEATURES ARE: FEED-THRU WITH LOCKING RAMP AND POLARIZING TAB.
- 7 OBSOLETE PARTS: OBSOLETE CIS STREAMLINING PER D.RENAUD/D.SINISI
- 8 OBSOLETE PARTS



	55.47 [2.184]	14	4-644467-4
	51.51 [2.028]	13	4-644467-3
	47.55 [1.872]	12	4-644467-2
	43.59 [1.716]	11	4-644467-1
	39.62 [1.560]	10	4-644467-0
	35.66 [1.404]	9	3-644467-9
	31.70 [1.248]	8	3-644467-8
	27.74 [1.092]	7	3-644467-7
	23.77 [.936]	6	3-644467-6
	19.81 [.780]	5	3-644467-5
	15.85 [.624]	4	3-644467-4
	11.89 [.468]	3	3-644467-3
	7.92 [.312]	2	3-644467-2
7 SUPERSEDED	55.47 [2.184]	14	1-644467-4
7 SUPERSEDED	51.51 [2.028]	13	1-644467-3
8 SUPERSEDED	47.55 [1.872]	12	1-644467-2
	43.59 [1.716]	11	1-644467-1
7 SUPERSEDED	39.62 [1.560]	10	1-644467-0
	35.66 [1.404]	9	644467-9
7 SUPERSEDED	31.70 [1.248]	8	644467-8
7 SUPERSEDED	27.74 [1.092]	7	644467-7
8 SUPERSEDED	23.77 [.936]	6	644467-6
	19.81 [.780]	5	644467-5
8 SUPERSEDED	15.85 [.624]	4	644467-4
	11.89 [.468]	3	644467-3
8 SUPERSEDED	7.92 [.312]	2	644467-2
	DIM A	NO. OF CIRCUITS	PART NO

THIS DRAWING IS A CONTROLLED DOCUMENT.		DWN B. LEWIS 12 FEB 91	TE Connectivity	
DIMENSIONS: mm [INCHES]		CHK R. SWING 12 FEB 91	MTA 156 CONNECTOR ASSEMBLY, 22 AWG, STANDARD	
TOLERANCES UNLESS OTHERWISE SPECIFIED: 0 PLC ± - 1 PLC ± - 2 PLC ± - 3 PLC ± - 4 PLC ± - ANGLES ± -		APVD D. CLARK 20 FEB 91	NAME	
MATERIAL		PRODUCT SPEC 108-1051	SIZE	
FINISH		APPLICATION SPEC 114-1020	CAGE CODE 00779	DRAWING NO 644467
CUSTOMER DRAWING		WEIGHT	RESTRICTED TO	SCALE 4:1
			SHEET 1 OF 1	REV E

单击下面可查看定价，库存，交付和生命周期等信息

[>>TE Connectivity\(泰科\)](#)