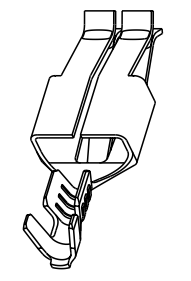
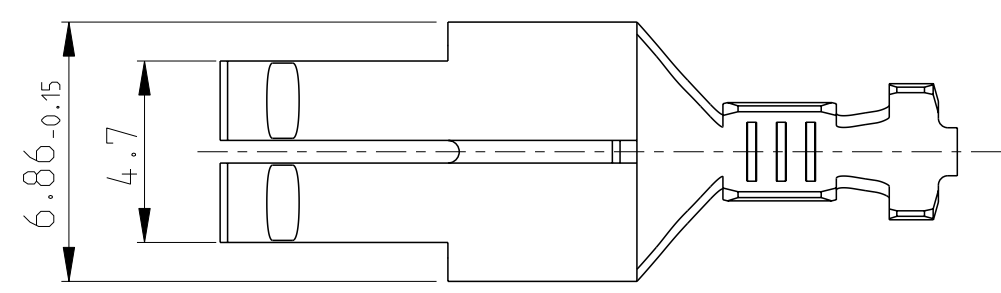
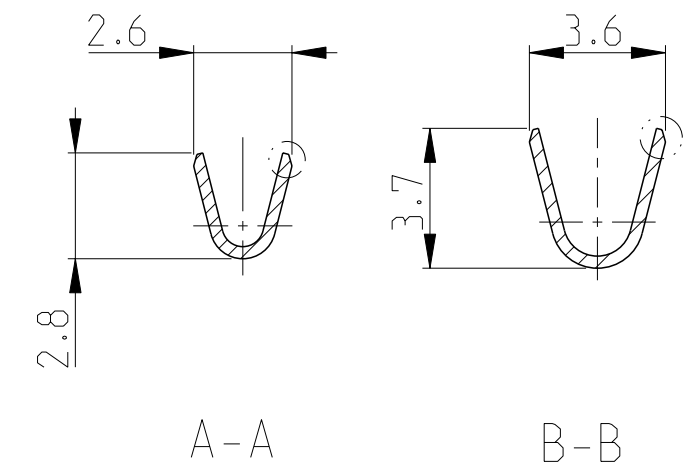
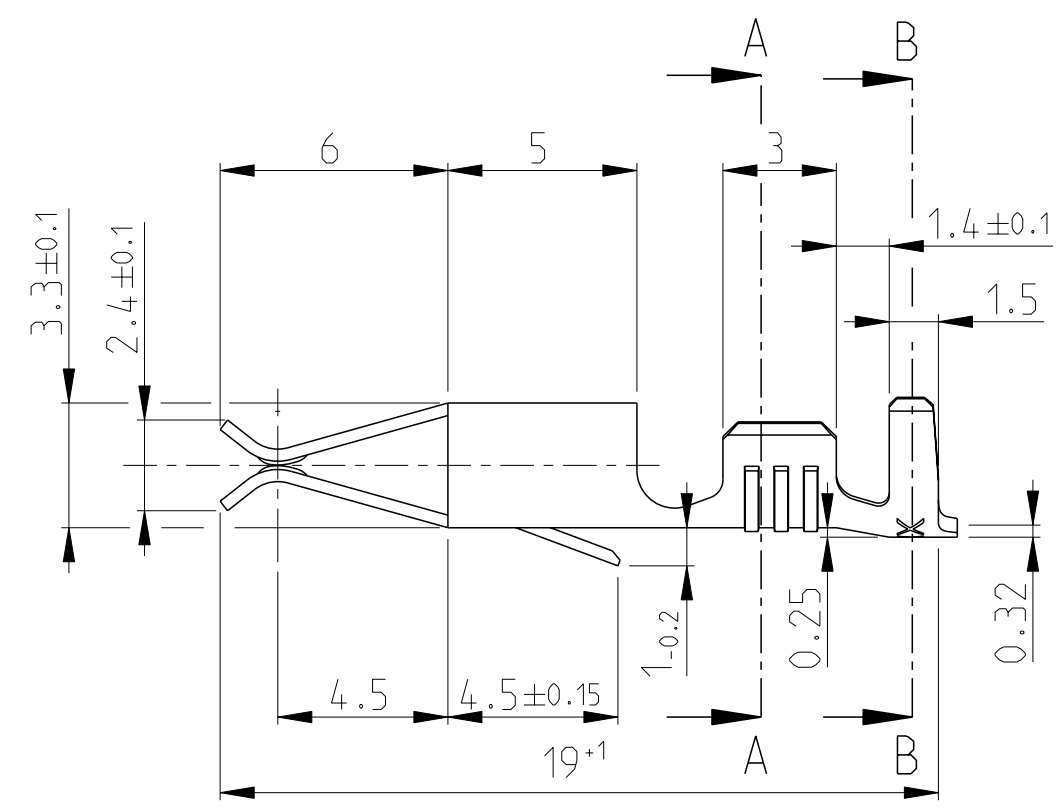


THIS DRAWING IS UNPUBLISHED. RELEASED FOR PUBLICATION 20
 © COPYRIGHT 20 BY - ALL RIGHTS RESERVED.

LOC	DIST	REVISIONS				
P	LTR	DESCRIPTION	DATE	DWN	APVD	
	E	SEE ECR-11-010607	04APR2011	JS	LB	
	E1	ECR-14-007191	21JUL2014	SK	JS	



CROSS-SECTION IN mm ² Leitungsquerschnitt in mm ²		0.35	0.50	0.75	1.00	1.50	2.00
SINGLE CONNECTION Einzelanschlag		X	X				
0.35		X	X				
0.50	X	X	X				
0.75	X						
1.00	X						
1.50							
2.00							

Note
 ① OBSOLETE

① 927848-3	TIN (vorverzinnt)	CuFe2	① 927847-3	E
927848-2	TIN (vorverzinnt)	CuSn4	927847-2	E
927848-1	TIN (vorverzinnt)	CuZn30	927847-1	E
LOOSE PIECE	FINISH	MATERIAL	PART NO.	REV.

THIS DRAWING IS A CONTROLLED DOCUMENT.		DWN J. SALO	04-Apr-11		
DIMENSIONS: mm		CHK R. SOLE	12APR2011		
TOLERANCES UNLESS OTHERWISE SPECIFIED:		APVD L. BATILLO	12APR2011	NAME STANDARD TIMER CONTACT	
		PRODUCT SPEC		RESTRICTED TO	
0 PLC ± 1 PLC ± 2 PLC ±0.2 3 PLC ± 4 PLC ± ANGLES ±°		APPLICATION SPEC		SIZE A3	CAGE CODE 00779
MATERIAL		WEIGHT		DRAWING NO C-927847	
FINISH		Customer Drawing		SCALE 5:1	SHEET 1 OF 1
				REV E1	

单击下面可查看定价，库存，交付和生命周期等信息

[>>TE Connectivity\(泰科\)](#)