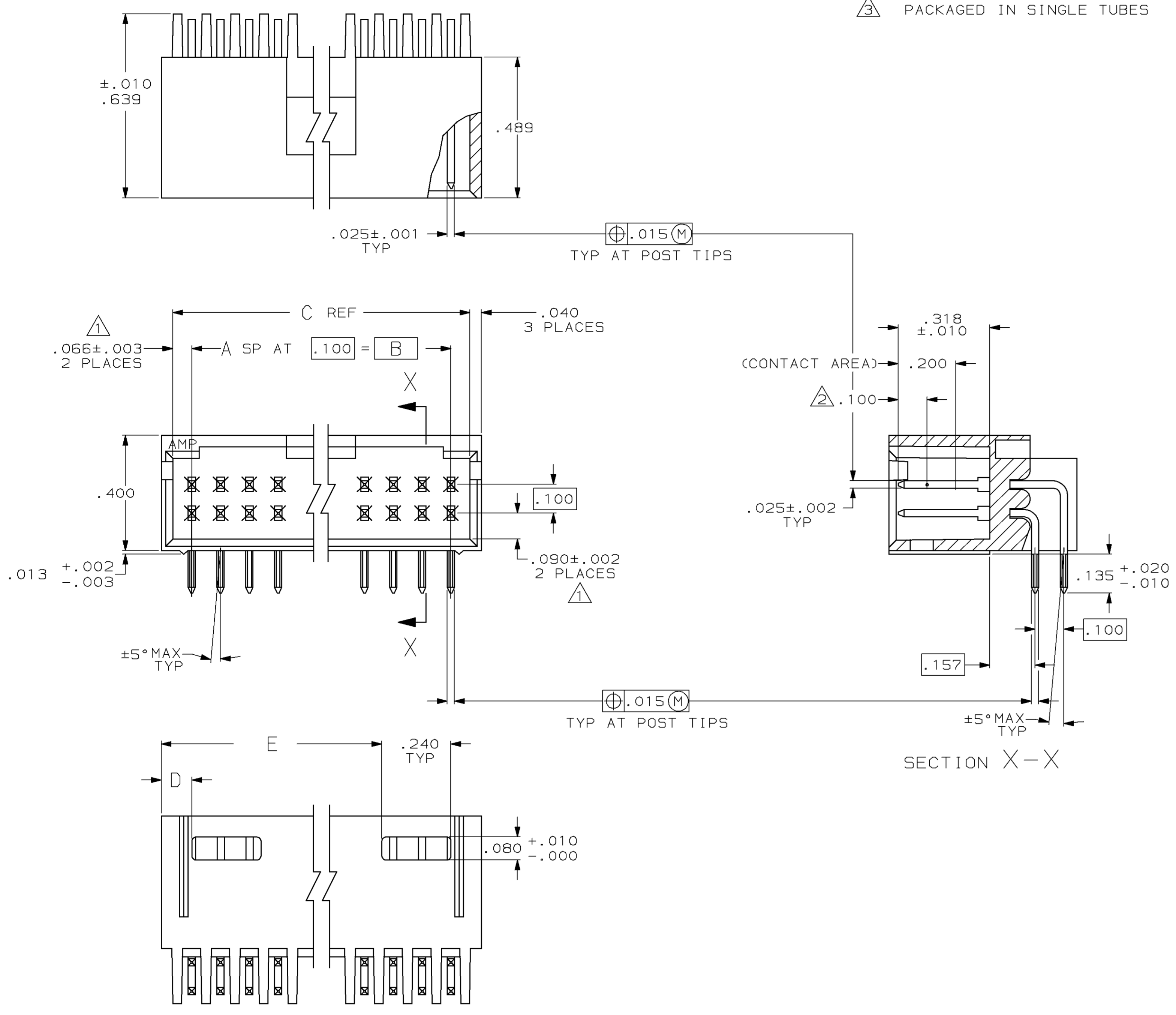
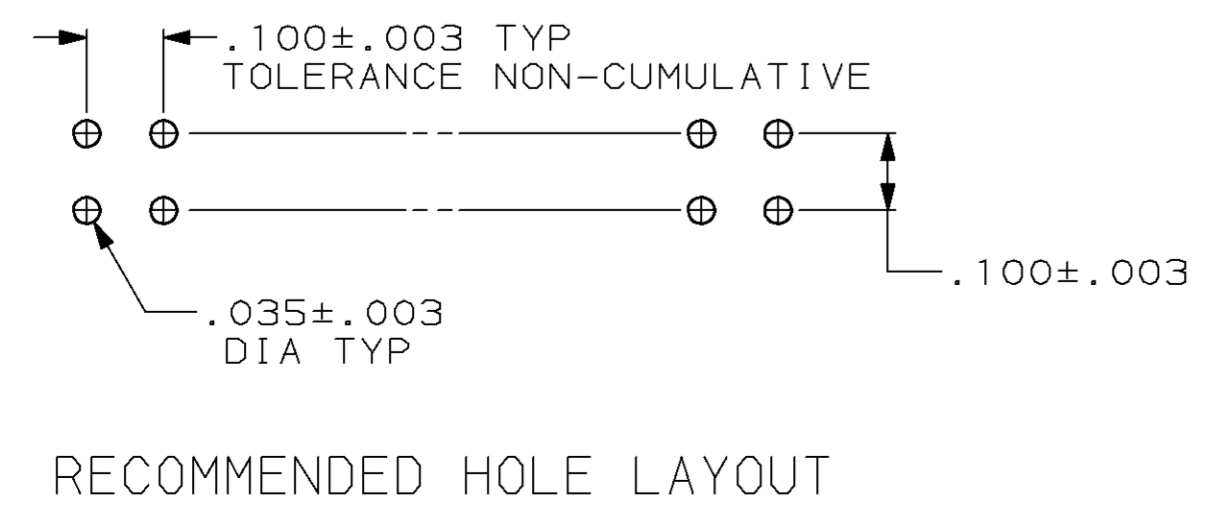


MOD		LOC		DIST		REV		REVISIONS		DATE	APPD
25	AD	39	P	F	ZONE	LTR		DESCRIPTION			
								A	REV & REDRAWN ECN 1610	-	-
								B	REV PER AR-2217	BM	-
								C	RV PER AR-2605	SH	7/89
								D	REV PER ECN AR2699	10-03-89	KIH
								E	REV LOC & DIST AD-4171	3-90	BF
								F	ECN AD-4707	08/02/90	KIH
								G	REV PER AD-5084	1-31-91	-
								H	REV PER 0310-0040-96	12-14-96	SAS
								J	REV PER 0310-0430-97	19JUN98	SAS

- ① THE NOTED DIMENSIONS APPLY AT THE INTERSECTION OF THE POST AND HOUSING
- ② POINT OF MEASUREMENT FOR PLATING THICKNESS
- ③ PACKAGED IN SINGLE TUBES



		.106	.332	.200	2	6	3-103166-6
3.506	.106	3.732	3.600	36	74	3-103166-5	
3.406	.106	3.632	3.500	35	72	3-103166-4	
3.306	.106	3.532	3.400	34	70	3-103166-3	
3.206	.106	3.432	3.300	33	68	3-103166-2	
3.106	.106	3.332	3.200	32	66	3-103166-1	
3.006	.106	3.232	3.100	31	64	3-103166-0	
2.906	.106	3.132	3.000	30	62	2-103166-9	
2.806	.106	3.032	2.900	29	60	2-103166-8	
2.706	.106	2.932	2.800	28	58	2-103166-7	
2.606	.106	2.832	2.700	27	56	2-103166-6	
2.506	.106	2.732	2.600	26	54	2-103166-5	
2.406	.106	2.632	2.500	25	52	2-103166-4	
2.306	.106	2.532	2.400	24	50	2-103166-3	
2.206	.106	2.432	2.300	23	48	2-103166-2	
2.106	.106	2.332	2.200	22	46	2-103166-1	
2.006	.106	2.232	2.100	21	44	2-103166-0	
1.906	.106	2.132	2.000	20	42	1-103166-9	
1.806	.106	2.032	1.900	19	40	1-103166-8	
1.706	.106	1.932	1.800	18	38	1-103166-7	
1.606	.106	1.832	1.700	17	36	1-103166-6	
1.506	.106	1.732	1.600	16	34	1-103166-5	
1.406	.106	1.632	1.500	15	32	1-103166-4	
1.306	.106	1.532	1.400	14	30	1-103166-3	
1.206	.106	1.432	1.300	13	28	1-103166-2	
1.106	.106	1.332	1.200	12	26	1-103166-1	
1.006	.106	1.232	1.100	11	24	1-103166-0	
.906	.106	1.132	1.000	10	22	103166-9	
.806	.106	1.032	.900	9	20	103166-8	
.706	.106	.932	.800	8	18	103166-7	
.606	.106	.832	.700	7	16	103166-6	
.506	.106	.732	.600	6	14	103166-5	
.406	.106	.632	.500	5	12	103166-4	
.306	.106	.532	.400	4	10	103166-3	
.206	.106	.432	.300	3	8	103166-2	
.106	.106	.332	.200	2	6	103166-1	
E	D	C	B	A	NO OF POSN	ASSEMBLY PART NUMBER	



UNLESS OTHERWISE SPECIFIED DIMENSIONS ARE IN INCHES TOLERANCES ON:

2 PL DEC ± .005	DR 7-27-87 H MOLL	AMP INCORPORATED Harrisburg, Pa. 17105
3 PL DEC ± .005	CHK 7-29-87 L A MAYER	
ANGLES ± .005	APPD 7-28-87 R FEIDT	NAME HDR ASSY, MOD II, SHROUDED, 4 SIDES, DBL ROW, .100X.100¢, RIGHT ANGLE, W/ .025 SQ POSTS
MATERIAL: HOUSING: FLAME RETARDANT THERMOPLASTIC, COLOR-BLACK	APPD 7-29-87 R ELICKER	PRODUCT SPEC
POSTS: PHOS BRONZE	APPLICATION SPEC	SIZE D
FINISH: POSTS: .000030 GOLD IN CONTACT AREA, .000100-.000200 MATTE TIN-LEAD ON SOLDER TAIL, ALL OVER .000050 NICKEL	WEIGHT	FSCM NO 00779
		DRAWING NO 103166
		SCALE 4:1
		SHEET 1 OF 1

单击下面可查看定价，库存，交付和生命周期等信息

[>>TE Connectivity\(泰科\)](#)