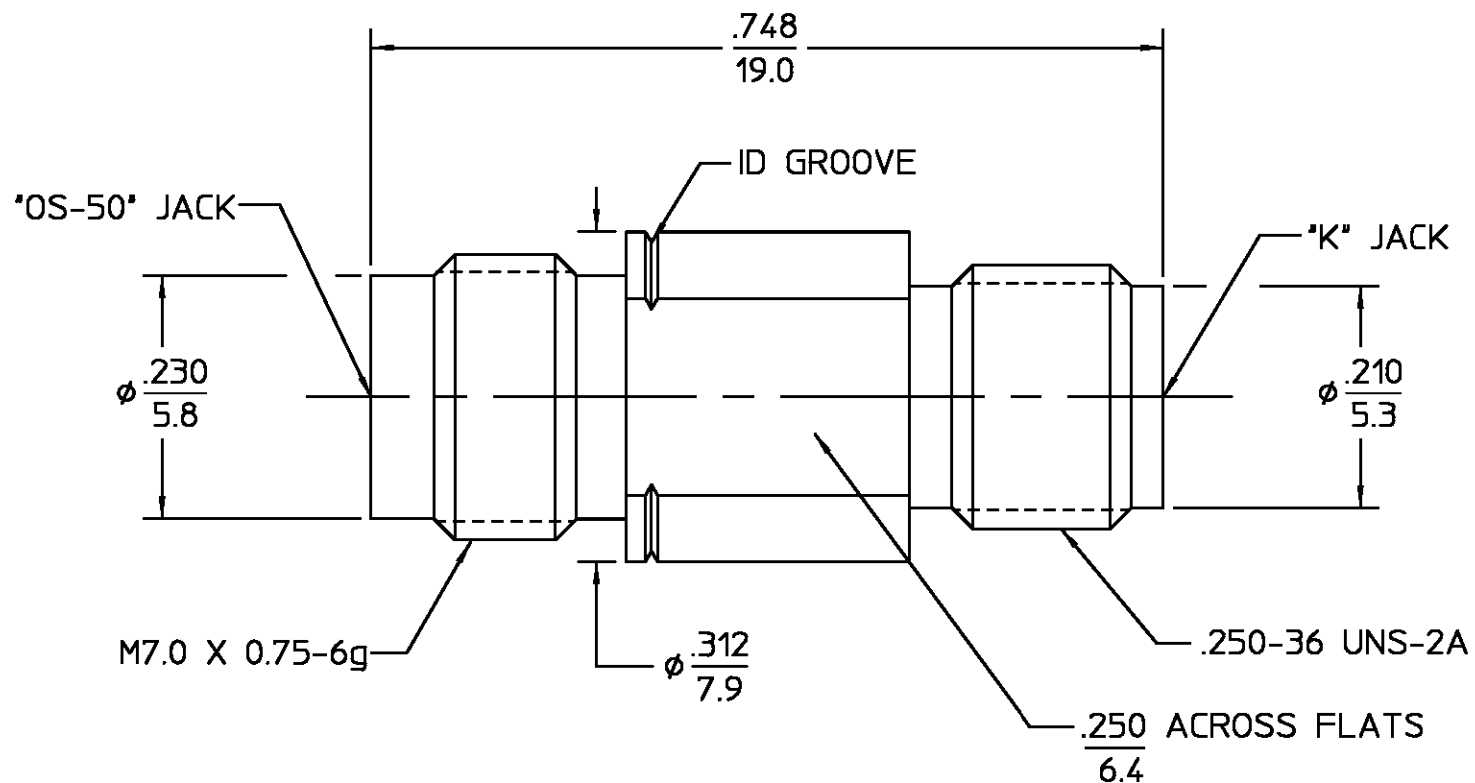


REVISIONS			
REV	DESCRIPTION	DATE	APPROVED
01 ₁	REVISED	11/19/86	<i>[Signature]</i>



HOUSING INNER SLEEVE	STAINLESS STEEL PER ASTM-A484 AND ASTM-A582, TYPE 303	PASSIVATE PER QQ-P-35
DIELECTRIC	TFE FLUOROCARBON PER ASTM-D-1457	N/A
CENTER CONTACT	BERYLLIUM COPPER PER ASTM-B-196 OR ASTM-B-197, ALLOY C17300, CONDITION H	GOLD PLATE PER MIL-G-45204
COMPONENT	MATERIAL	FINISH
UNLESS OTHERWISE SPECIFIED DIMENSIONS ARE IN INCHES	DRAWN BY DAC	DATE 11/10/88
FRAC. ± 1/64	CHECKED BY DAC	11/23/88
DEC. ± .005	APPR. BY AW	11/28/88
ANGLES ± 1°	AMP Incorporated 140 Fourth Avenue Waltham, MA 02451-7599	
These drawings and specifications are the property of M/A COM Interconnect Div. and shall not be reproduced or copied or used in whole or in part as the basis for the manufacture or sale of item(s) without written permission.	USE ASSY PROCEDURE	TITLE OS-50 JACK TO OS 2.9 JACK
	NO. A.P. N/A	SIZE B
		CODE IDENT NO. 26805
	SCALE 6:1	8580-2361-02
		REV 01 ₁
		SHEET 1 OF 1

NOTES:
1. CAPTURED CENTER CONTACT

.XXX = in
XX.X = mm (REF)

CUSTOMER DRAWING

AMP PART # 1063383-1
SHEET 1 OF 1 REV A

单击下面可查看定价，库存，交付和生命周期等信息

[>>TE Connectivity\(泰科\)](#)