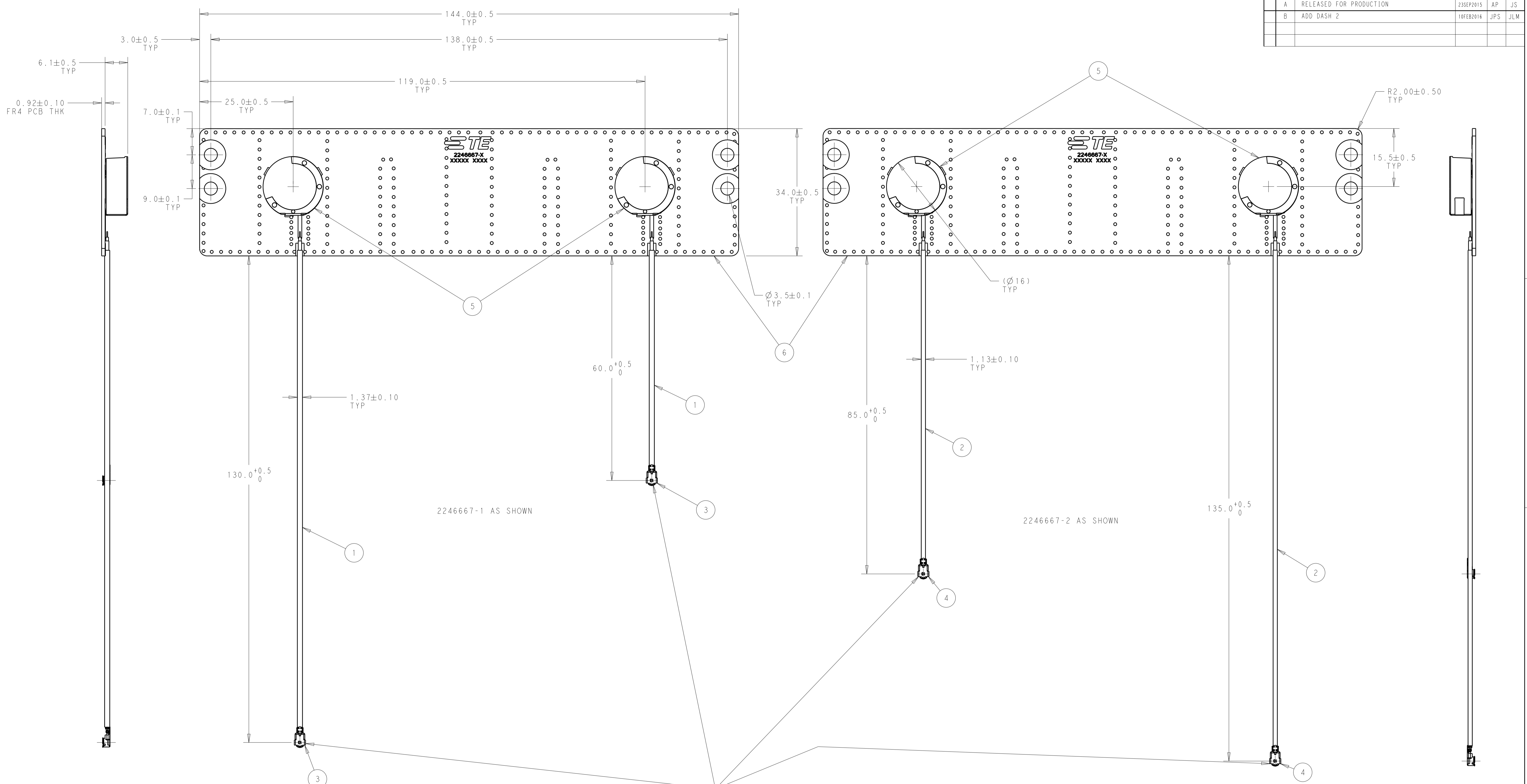


| REVISIONS | | | | |
|-----------|-----|-------------------------|-----------|---------|
| P | LTN | DESCRIPTION | DATE | APVD |
| A | | RELEASED FOR PRODUCTION | 23SEP2015 | AP JS |
| B | | ADD DASH 2 | 10FEB2016 | JFS JLM |



2246667-1 AS SHOWN

2246667-2 AS SHOWN

CONNECTOR ORIENTATION MATING FACE SIDE DOWN TYPICAL

1. PARTS AND PROCESSES ARE RoHS COMPLIANT PER TE CONNECTIVITY STANDARD TEC-138-702.

| QTY | DESCRIPTION | ITEM |
|-----|---------------------------------------|------|
| 1 | PCB | 6 |
| 2 | DUAL BAND PUCK ANTENNA | 5 |
| 2 | 1-PEX 20565 MHF4L CONNECTOR PLUG 1.13 | 4 |
| 2 | 1-PEX 20351 MHF CONNECTOR PLUG 1.37 | 3 |
| 2 | 1.13 DIA COAX CABLE BLACK | 2 |
| 2 | 1.37 DIA COAX CABLE BLACK | 1 |

| | | | | |
|--|--|---|---|--|
| THIS DRAWING IS A CONTROLLED DOCUMENT. | | DWN J. SCHOLZ 10FEB2016 | TE Connectivity | |
| DIMENSIONS: mm | | CHK J. SCHOLZ 10FEB2016 | NAME DUAL BAND PUCK ANTENNA ASSEMBLY WITH 1.37 AND 1.13 COAX CABLES | |
| TOLERANCES UNLESS OTHERWISE SPECIFIED: | | APVD J. MOORE 10FEB2016 | PRODUCT SPEC - | |
| 0 PLC ±0.2 | | APPLICATION SPEC - | | |
| 1 PLC ±0.1 | | SIZE CAGE CODE DRAWING NO. A1 C=2246667 | | |
| 2 PLC ±0.05 | | RESTRICTED TO - | | |
| 3 PLC ± | | WEIGHT - | | |
| 4 PLC ± | | CUSTOMER DRAWING | | |
| ANGLES ± | | SCALE 2:1 SHEET 1 OF 1 REV B | | |
| FINISH ±0.2 | | | | |

单击下面可查看定价，库存，交付和生命周期等信息

[>>TE Connectivity\(泰科\)](#)