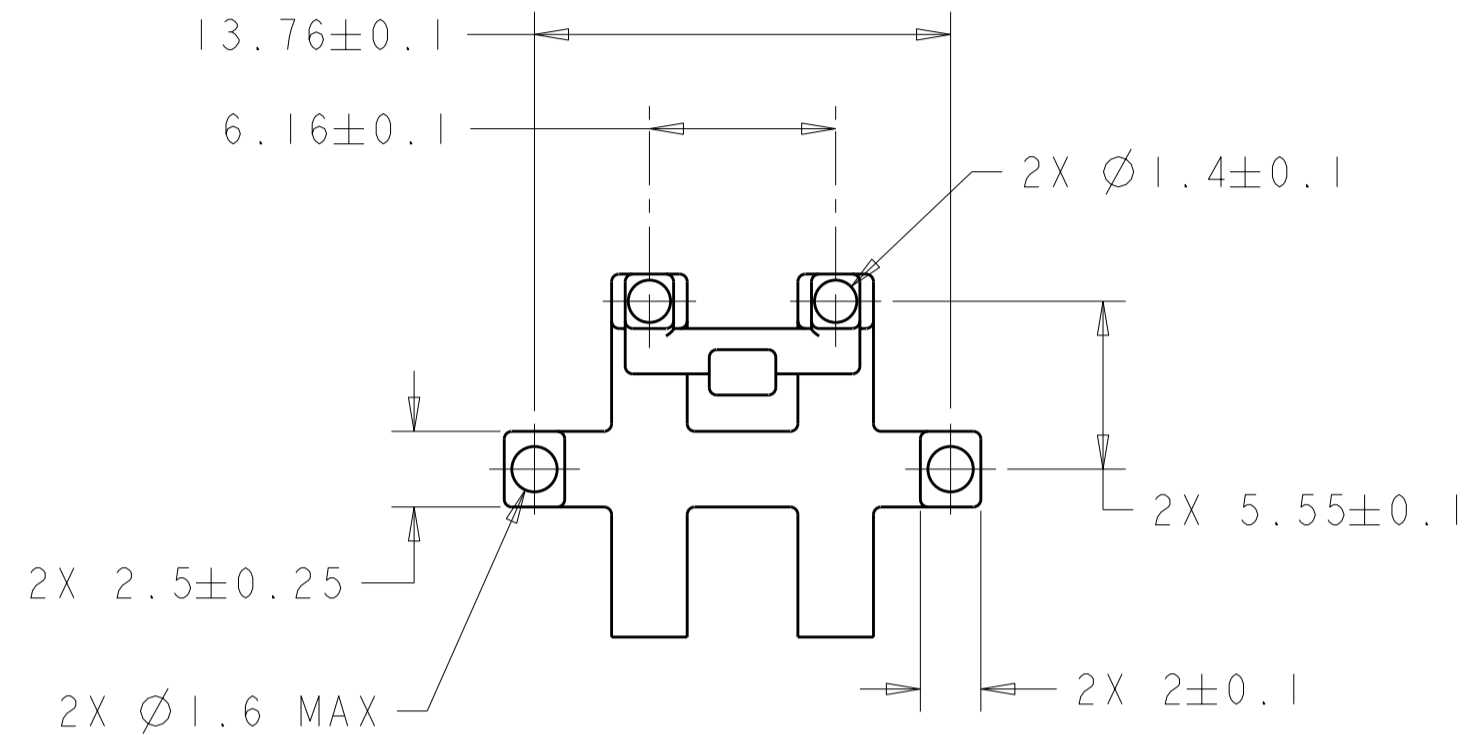
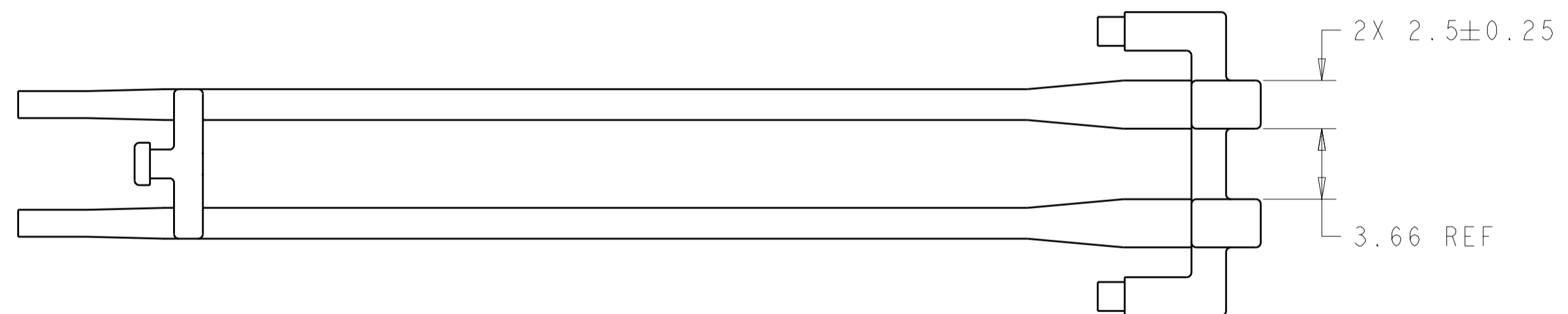
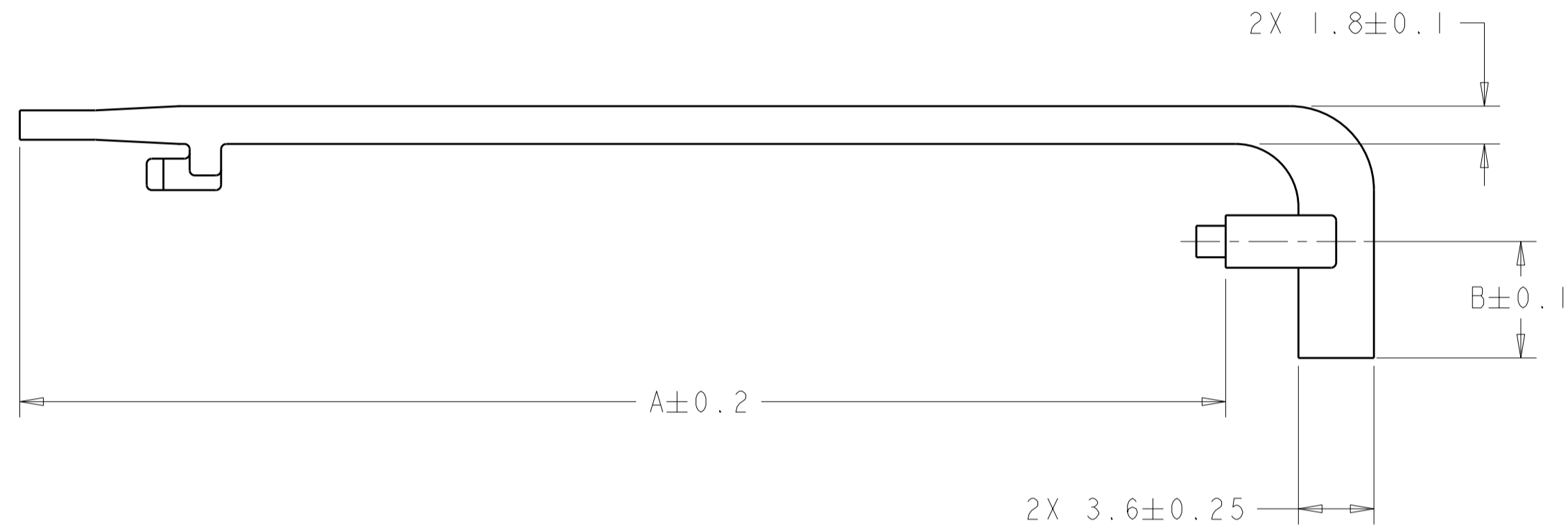


THIS DRAWING IS UNPUBLISHED. RELEASED FOR PUBLICATION 2007  
 © COPYRIGHT 2007 BY TYCO ELECTRONICS CORPORATION. ALL RIGHTS RESERVED.

| LOC | DIST | REVISIONS   |           |     |      |
|-----|------|-------------|-----------|-----|------|
| P   | LTR  | DESCRIPTION | DATE      | DWN | APVD |
| GP  | 00   | 1 ORIGINAL  | 03SEP2008 | CJV | EB   |
|     |      |             |           |     |      |
|     |      |             |           |     |      |



△ MATERIAL: POLYCARBONATE, CLEAR



|      |      |             |
|------|------|-------------|
| 6.00 | 57.5 | 2057002-3   |
| 5.55 | 54.0 | 2057002-2   |
| 5.55 | 57.5 | 2057002-1   |
| B    | A    | PART NUMBER |

THIS PRINT IS  
**PRELIMINARY**  
 UNQUALIFIED PRODUCT  
 CONTACT PRODUCT ENGINEERING  
 BEFORE USING THIS PRINT

|   |  |                                  |   |                    |
|---|--|----------------------------------|---|--------------------|
| THIS DRAWING IS A CONTROLLED DOCUMENT FOR TYCO ELECTRONICS CORPORATION. IT IS SUBJECT TO CHANGE AND THE CONTROLLING ENGINEERING ORGANIZATION SHOULD BE CONTACTED FOR THE LATEST REVISION. |  | DWN<br>C. VALENTINE<br>03SEP2008 | Tyco Electronics<br>Harrisburg, PA 17105-3608             |                    |
| DIMENSIONS:<br>mm   |  | CHK<br>E. BRIGHT<br>03SEP2008    | NAME<br>LIGHT PIPE, DOUBLE, THRU BEZEL,<br>1X3 CAGE, QSFP |                    |
| TOLERANCES UNLESS OTHERWISE SPECIFIED:<br>0 PLC ±<br>1 PLC ±0.5<br>2 PLC ±0.13<br>3 PLC ±0.013<br>4 PLC ±0.0001<br>ANGLES ±<br>FINISH   |  | APVD<br>E. BRIGHT<br>03SEP2008   | PRODUCT SPEC<br>-   |                    |
| MATERIAL<br>△   |  | APPLICATION SPEC<br>-            | RESTRICTED TO<br>-  |                    |
| CUSTOMER DRAWING  |  | WEIGHT<br>-                      | SIZE<br>A2  | CAGE CODE<br>00779 |
|   |  | SCALE<br>4:1                     | DRAWING NO<br>2057002                                     | REV<br>-           |

单击下面可查看定价，库存，交付和生命周期等信息

[>>TE Connectivity\(泰科\)](#)