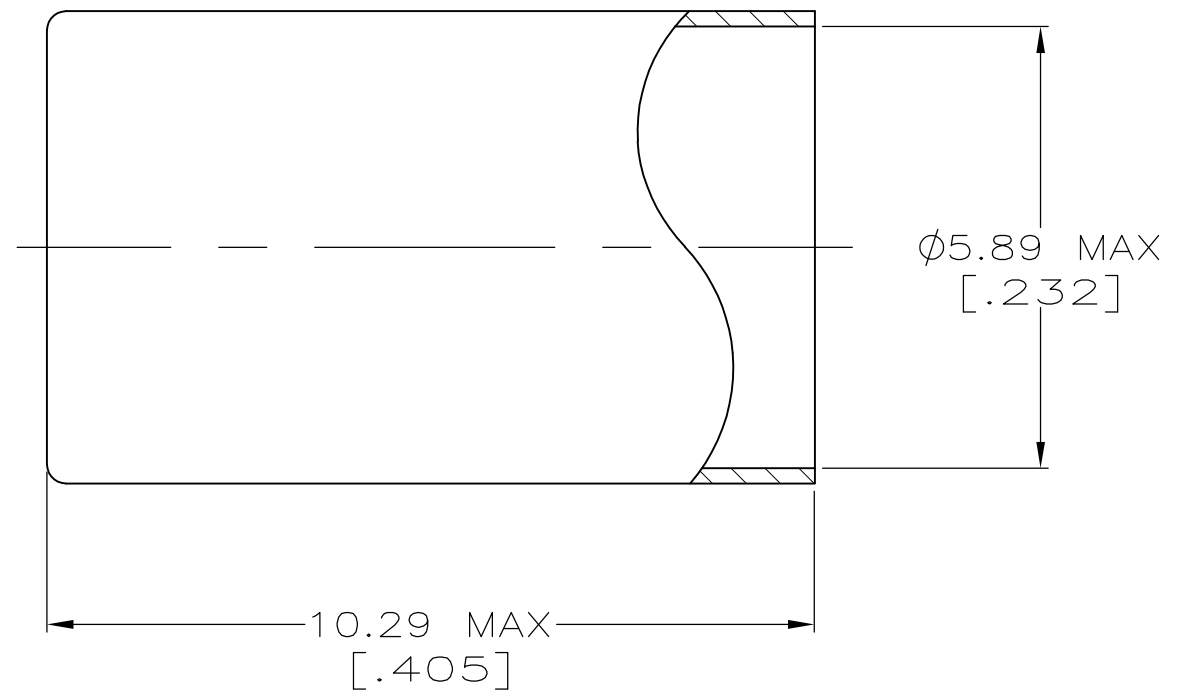


THIS DRAWING IS UNPUBLISHED. RELEASED FOR PUBLICATION
 © COPYRIGHT - By - ALL RIGHTS RESERVED.

REVISIONS					
P	LTR	DESCRIPTION	DATE	DWN	APVD
	S2	REVISED PER ECR-17-009545	07AUG2017	AS	RS



1. COPPER ALLOY
- △2 GOLD PLATE PER MIL-G-45204, 0.76μm [.000030] MIN THICKNESS.
- △3 SILVER PLATE PER QQ-S-365, 5.08μm [.000200] MIN THICKNESS.
- △4 TIN-LEAD PLATE PER ASTM-B-545, 2.54μm [.000100] MIN THICKNESS
- △5 MATTE TIN PLATE PER ASTM-B-545, 2.54μm [.000100] MIN THICKNESS

SUPERCEDED BY 9-329099-0	△3	9-329099-2
	△5	9-329099-1
OBSOLETE	△5	9-329099-0
	△2	1-329099-3
	△4	1-329099-1
SUPERCEDED BY 9-329099-2	△3	329099
	FINISH	PART NUMBER

THIS DRAWING IS A CONTROLLED DOCUMENT.		DWN MICHAEL E. COWHER 14NOV95	TE Connectivity		
DIMENSIONS: mm [INCHES]		CHK FRANK MORANA 14NOV95			
TOLERANCES UNLESS OTHERWISE SPECIFIED:		APVD FRANK MORANA 14NOV95	NAME FERRULE		
0 PLC ± - 1 PLC ± - 2 PLC ± - 3 PLC ± - 4 PLC ± - ANGLES ± -		PRODUCT SPEC -	RESTRICTED TO -		
MATERIAL △1		APPLICATION SPEC -	SIZE A3	CAGE CODE 00779	DRAWING NO C-329099
FINISH △2 △3 △4 △5		WEIGHT 0.000000	SCALE 10:1		
CUSTOMER DRAWING			SHEET 1 OF 1		REV S2

单击下面可查看定价，库存，交付和生命周期等信息

[>>TE Connectivity\(泰科\)](#)