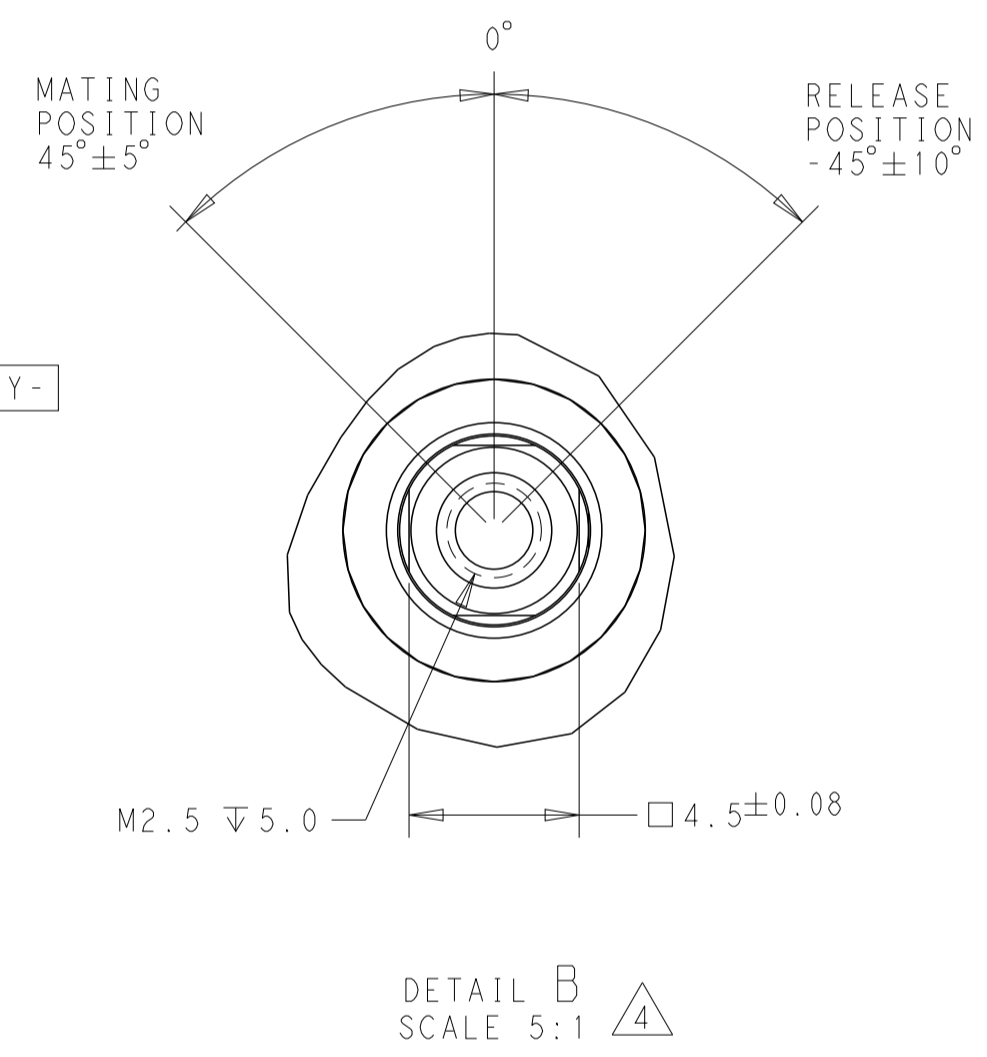
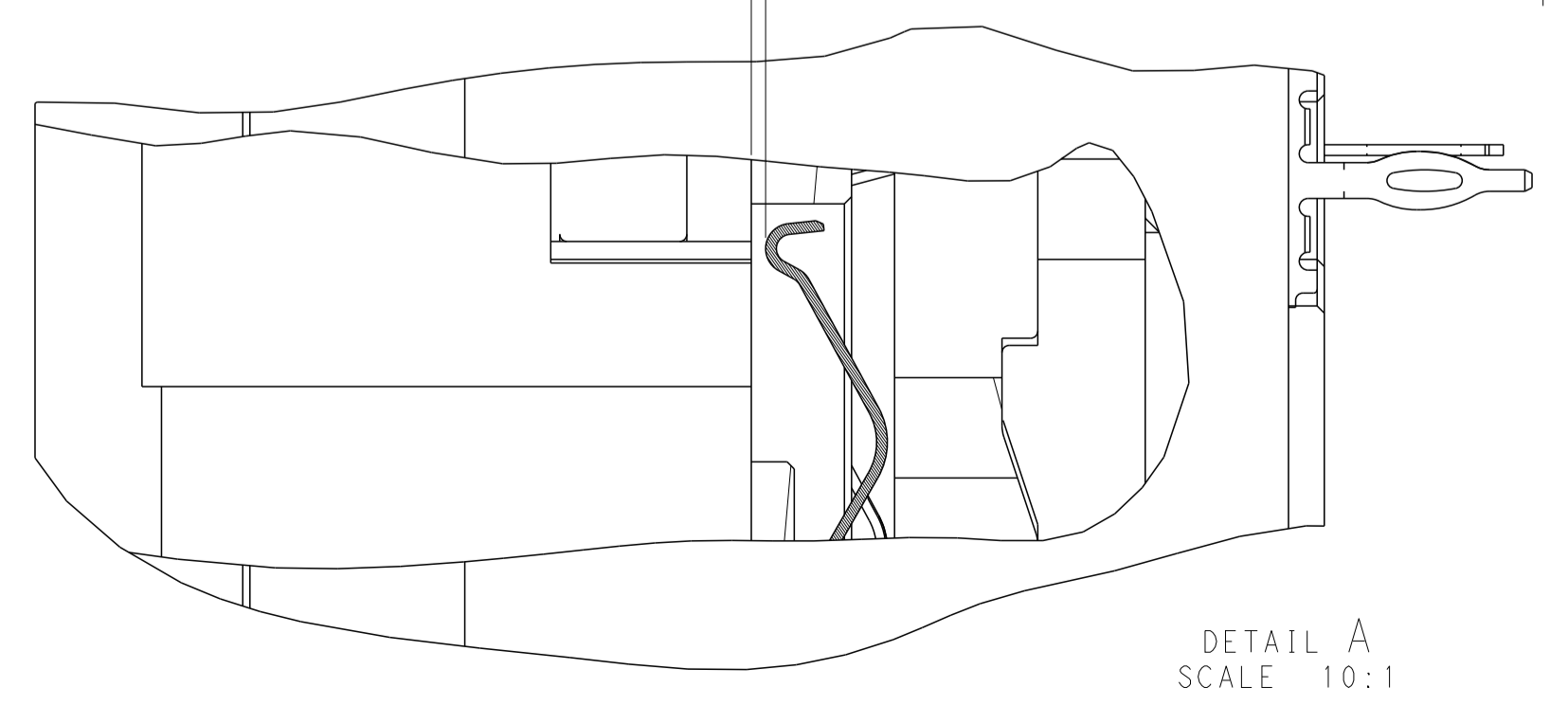
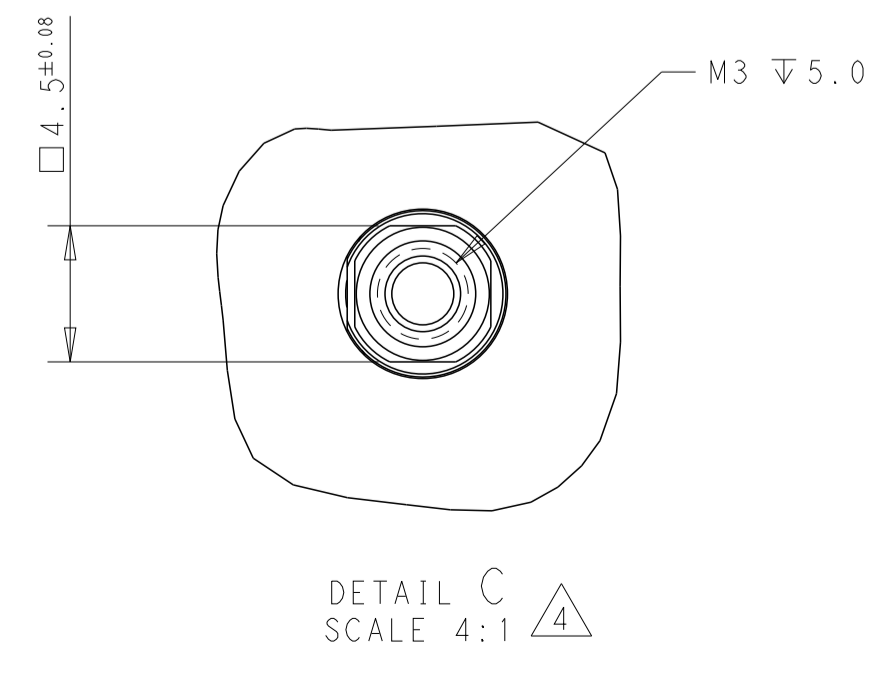
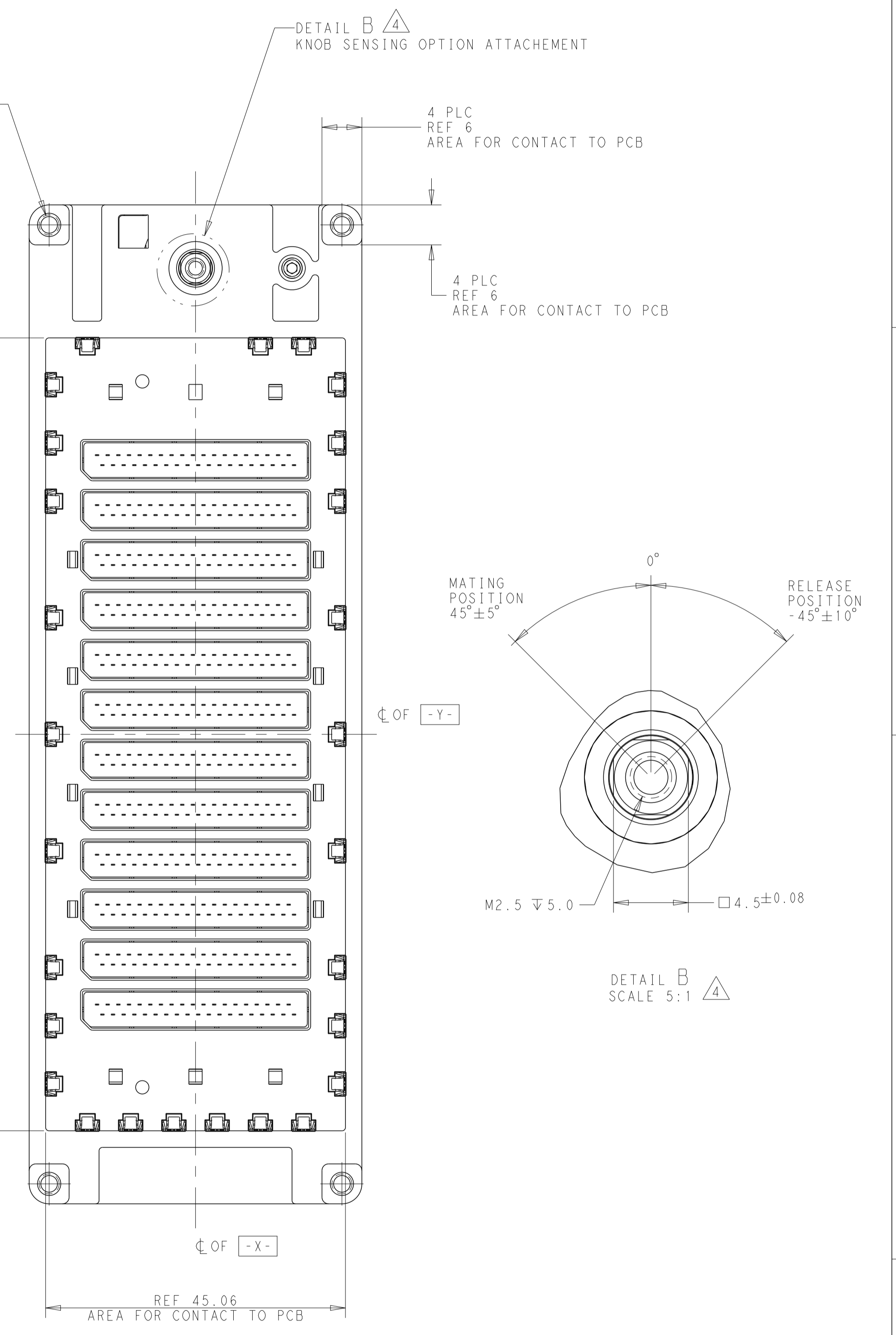
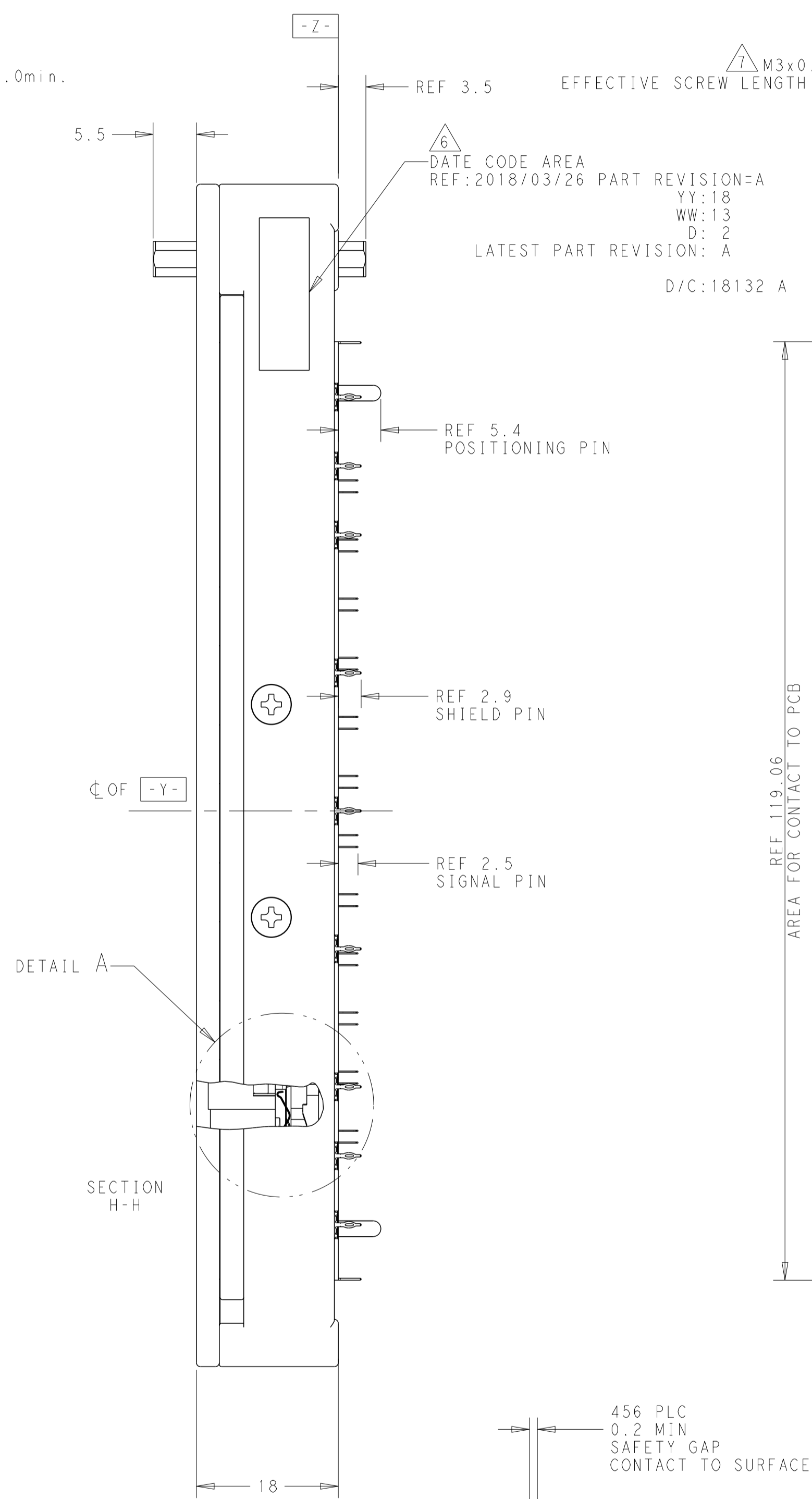
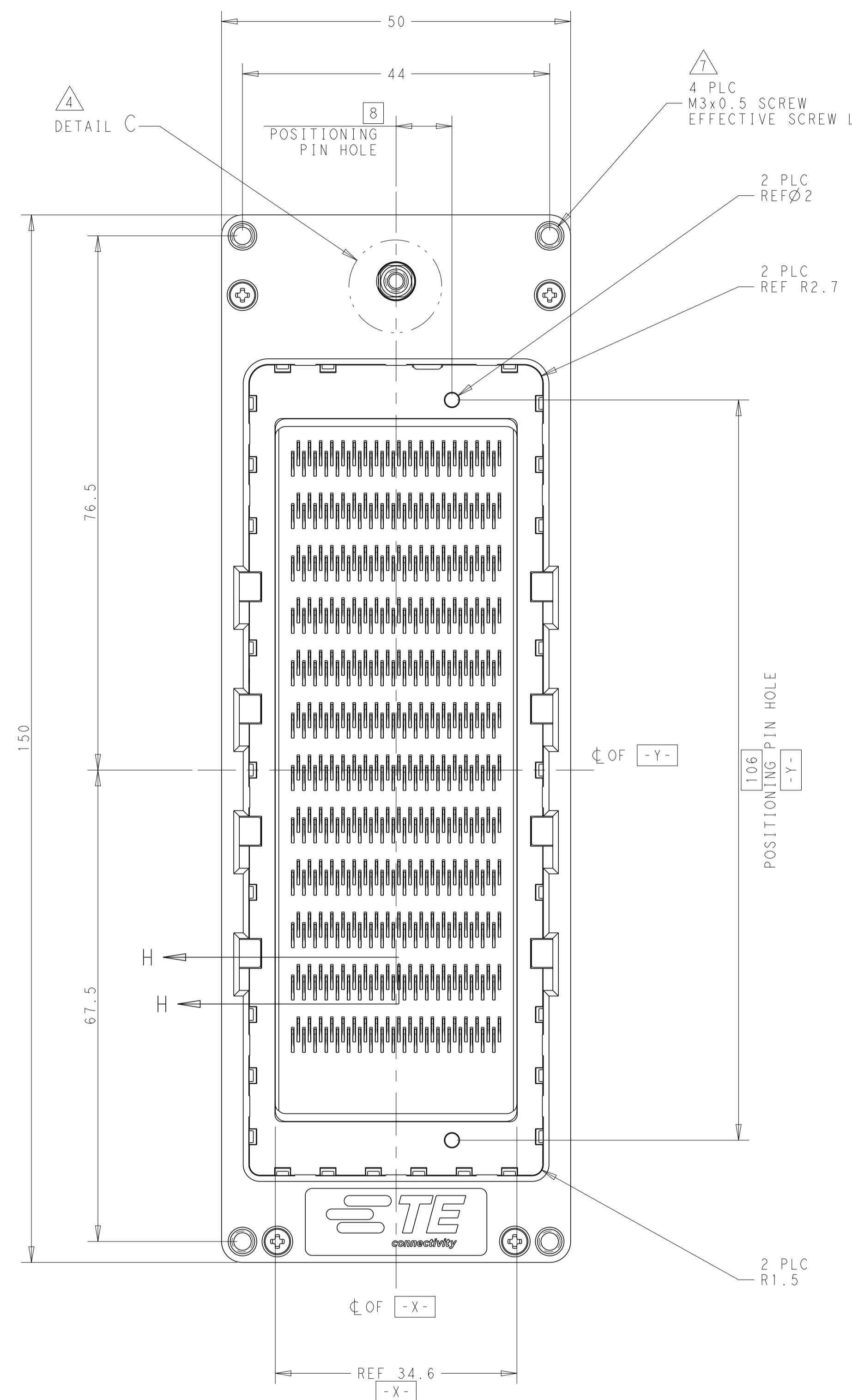


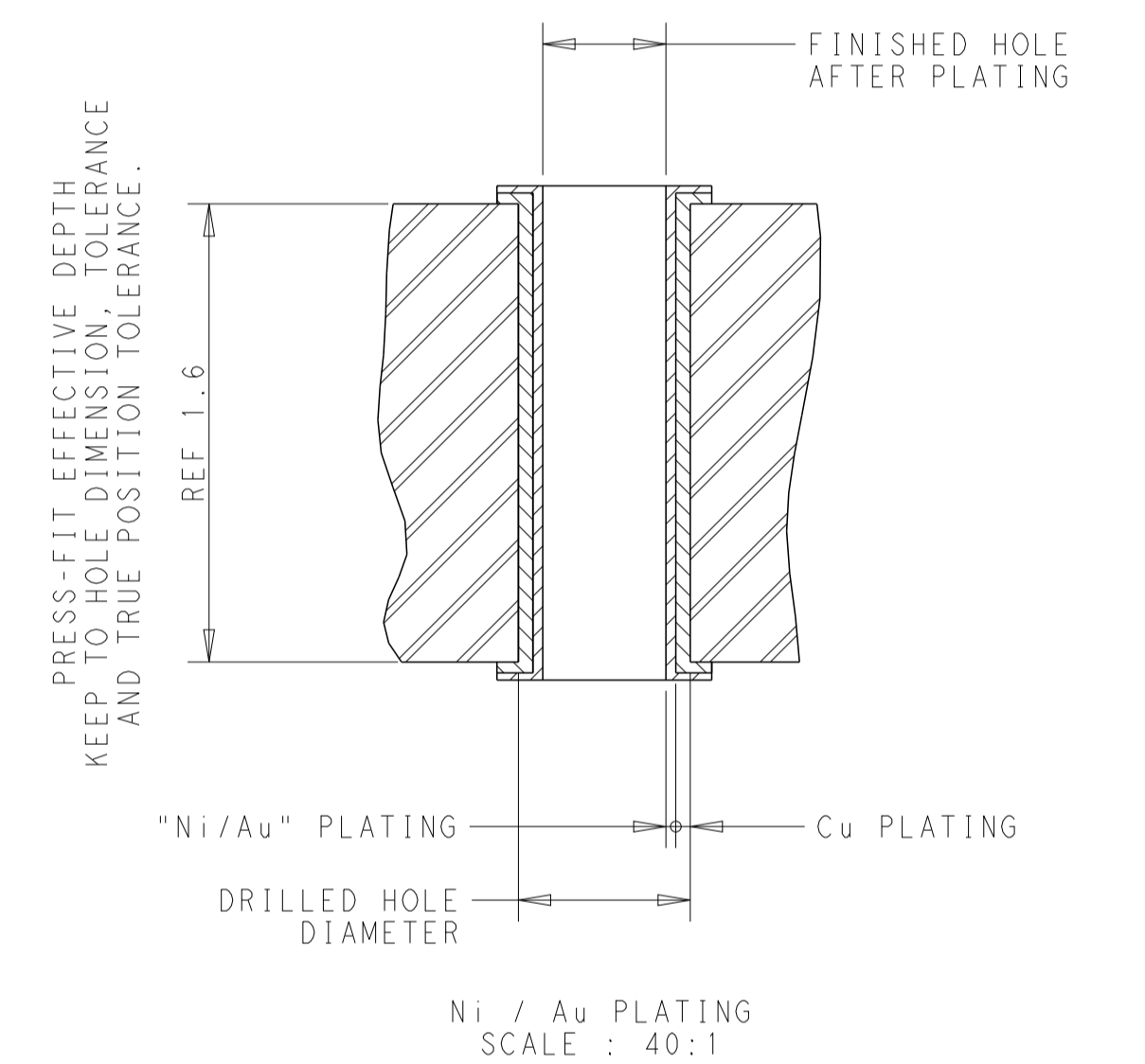
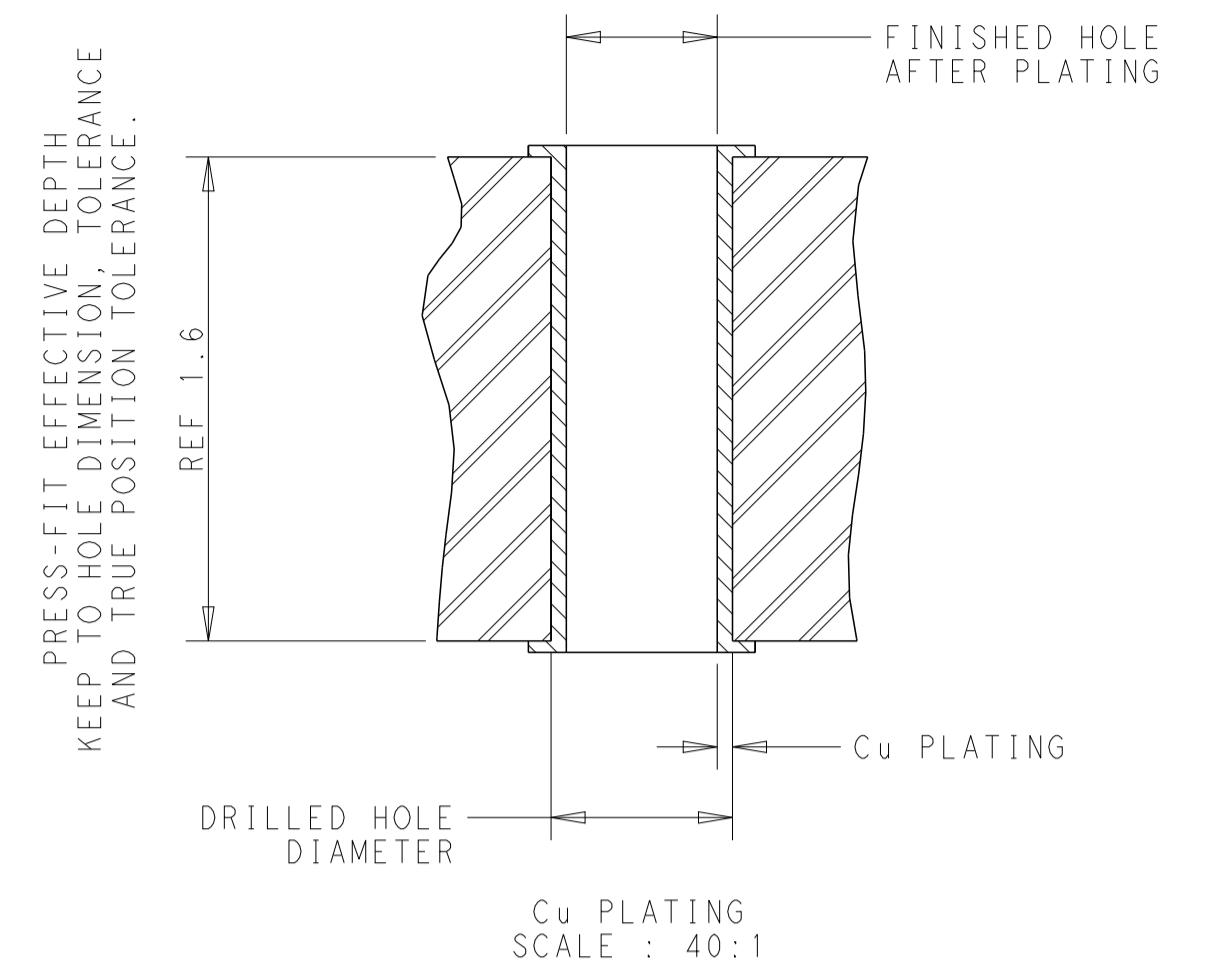
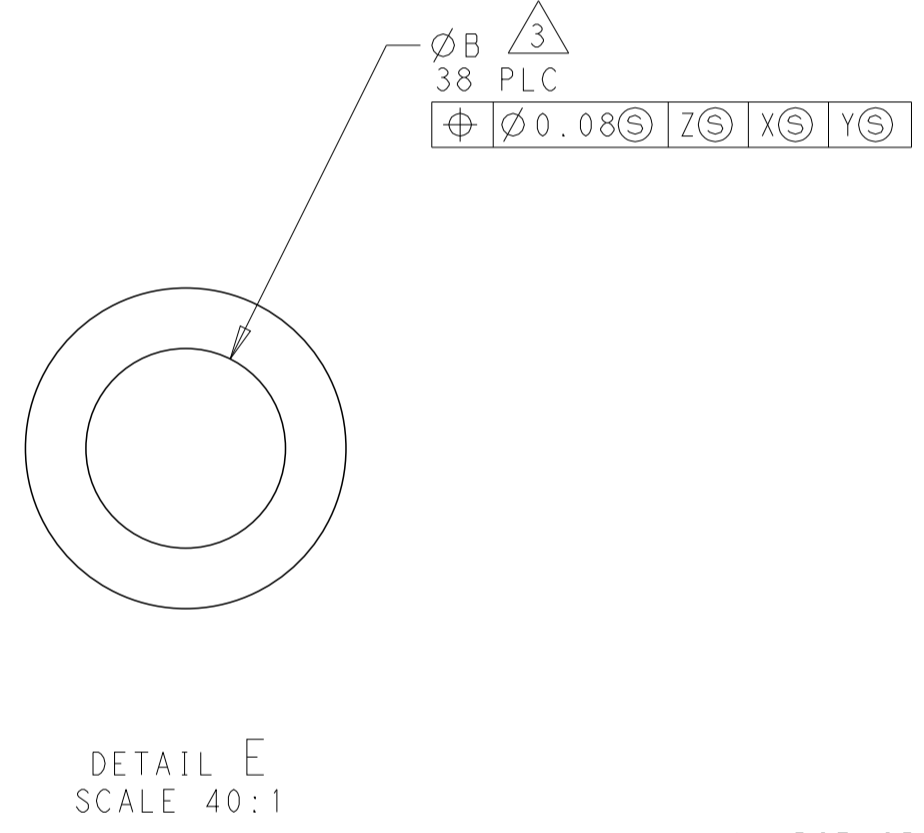
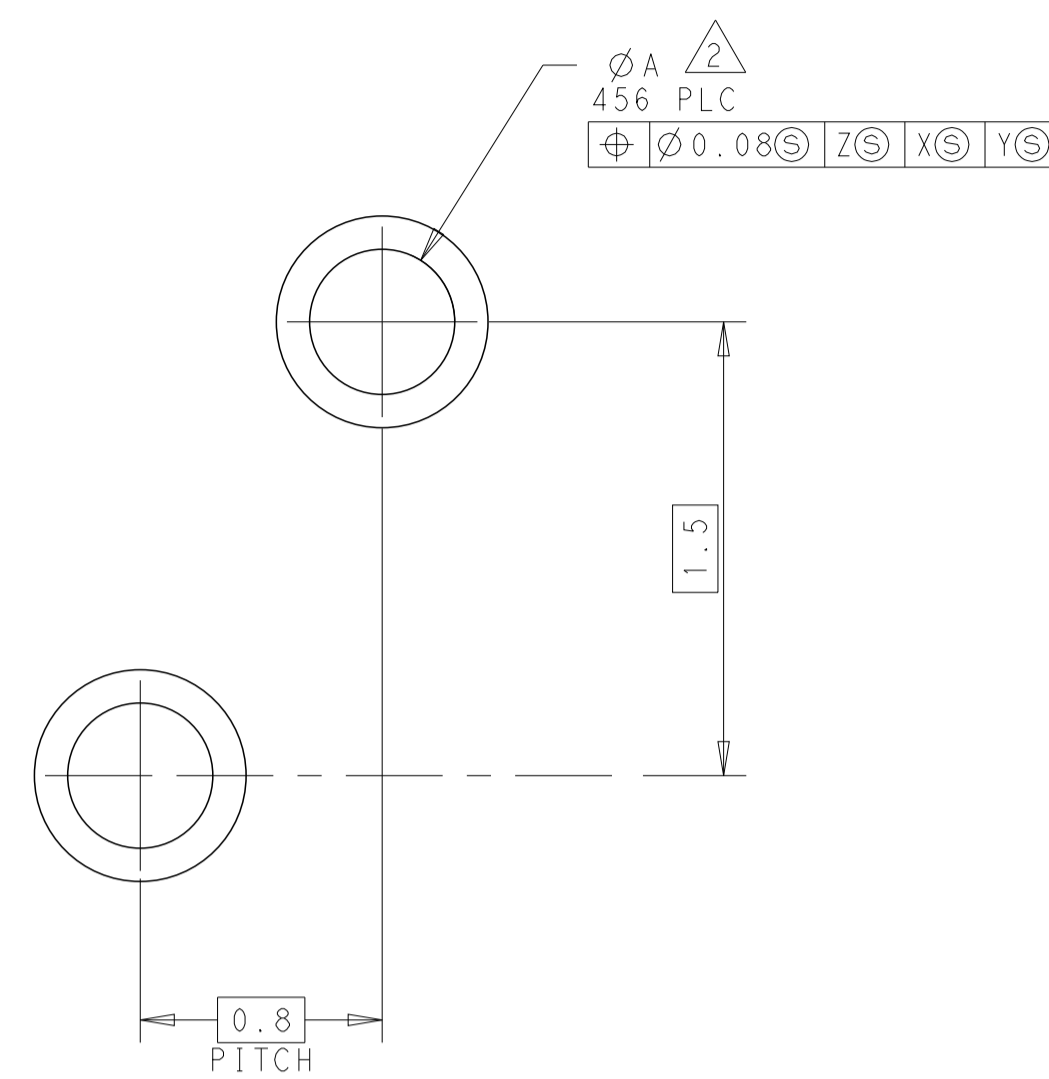
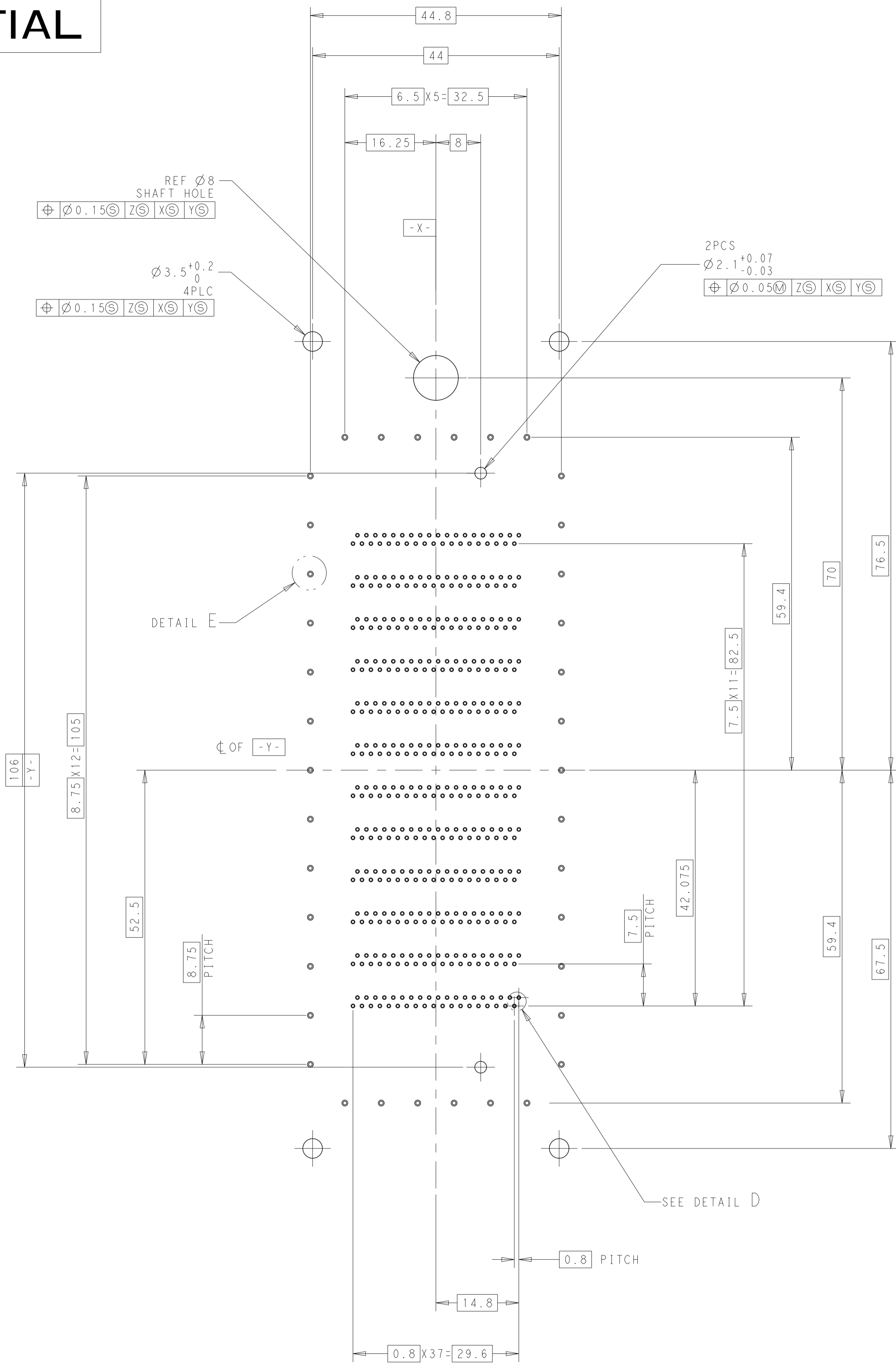
CONFIDENTIAL

| REVISIONS | | | | |
|-----------|-----------------------------------|-----------|-----|------|
| REV | DESCRIPTION | DATE | OWN | APVD |
| E | REVISED | 10SEP2015 | Y.S | M.K |
| F | REVISED | 06OCT2016 | Y.S | M.K |
| G | REVISED FOR SHIELD FINGER CHANGED | 23FEB2018 | Y.S | M.K |
| H | REVISED ECO-18-006616 | 27APR2018 | Y.S | M.K |



| | | | |
|--|--|---|--|
| THIS DRAWING IS A CONTROLLED DOCUMENT. | | OWN: Y. SASAKI 11MAR2014 | TE Connectivity |
| DIMENSIONS: UNLESS OTHERWISE SPECIFIED: mm | | CHK: M. KIMURA 11MAR2014 | |
| TOLERANCES UNLESS OTHERWISE SPECIFIED: | | APVD: M. KIMURA 11MAR2014 | RECEPTACLE CONNECTOR 456P RECEPTACLE ASSEMBLY BEEHIVE I/O CONNECTOR SERIES |
| 9-PLC ±0.3 | | NAME: S/N | |
| 1-PLC ±0.5 | | SIZE: CAGE CODE DRAWING NO. RESTRICTED TO | |
| 3-PLC ±0.13 | | 108-140047 | |
| 5-PLC ±0.013 | | APPLICATION SPEC | 114-5518 |
| 4-PLC ±0.004 | | FINISH: SEE SHEET 3 TABLE | WEIGHT: 308 g |
| ANGLES ±1.0 | | MATERIAL: SEE SHEET 3 TABLE | C=2822650 |
| CUSTOMER DRAWING | | SCALE: 2:1 | SHEET 1 OF 7 REV H |

CONFIDENTIAL



- PCB SPECIFICATION
MATERIAL : FR4(REF)
THICKNESS : 1.6mm MINIMUM
- PLATED THROUGH HOLE ØA
COPPER PLATING TYPE
COPPER FINISHED T,H DIA : REF Ø0.48 (Ø0.48±0.05)
DRILL HOLE DIA : Ø0.56±0.02
COPPER PLATING : 0.038±0.013

Au PLATING TYPE
Au FINISHED T,H DIA : REF Ø0.48 (Ø0.48±0.05)
DRILL HOLE DIA : Ø0.56±0.02
COPPER PLATING : 0.038±0.013
Ni PLATING : 0.00127 TO 0.0026mm
Au PLATING : 0.0001 TO 0.0005mm
- PLATED THROUGH HOLE ØB
COPPER PLATING TYPE
COPPER FINISHED T,H DIA : REF Ø0.66 (Ø0.66±0.05)
DRILL HOLE DIA : Ø0.74±0.025
COPPER PLATING : 0.038±0.013

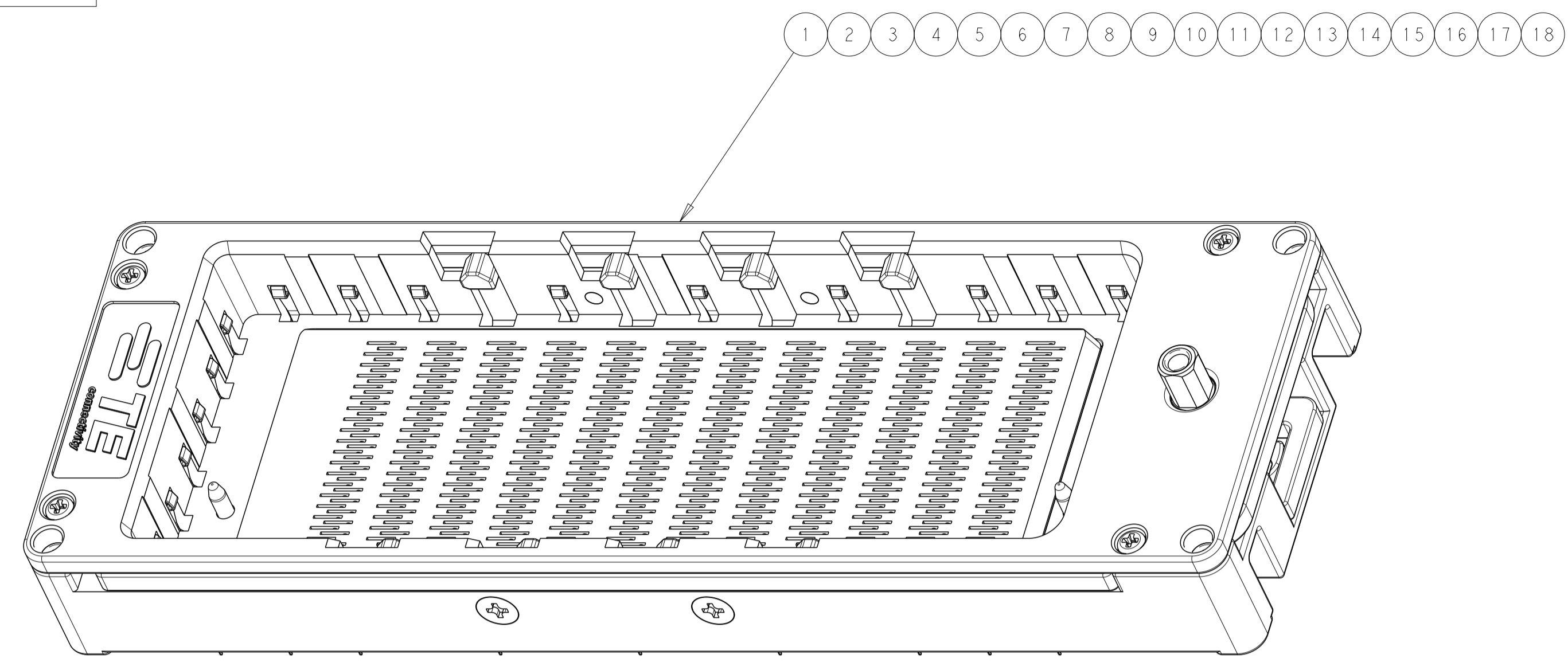
Au PLATING TYPE
Au FINISHED T,H DIA : REF Ø0.66 (Ø0.66±0.05)
DRILL HOLE DIA : Ø0.74±0.025
COPPER PLATING : 0.038±0.013
Ni PLATING : 0.00127 TO 0.0026mm
Au PLATING : 0.0001 TO 0.0005mm

RECOMMENDED PCB LAYOUT
CONNECTOR TOP VIEW

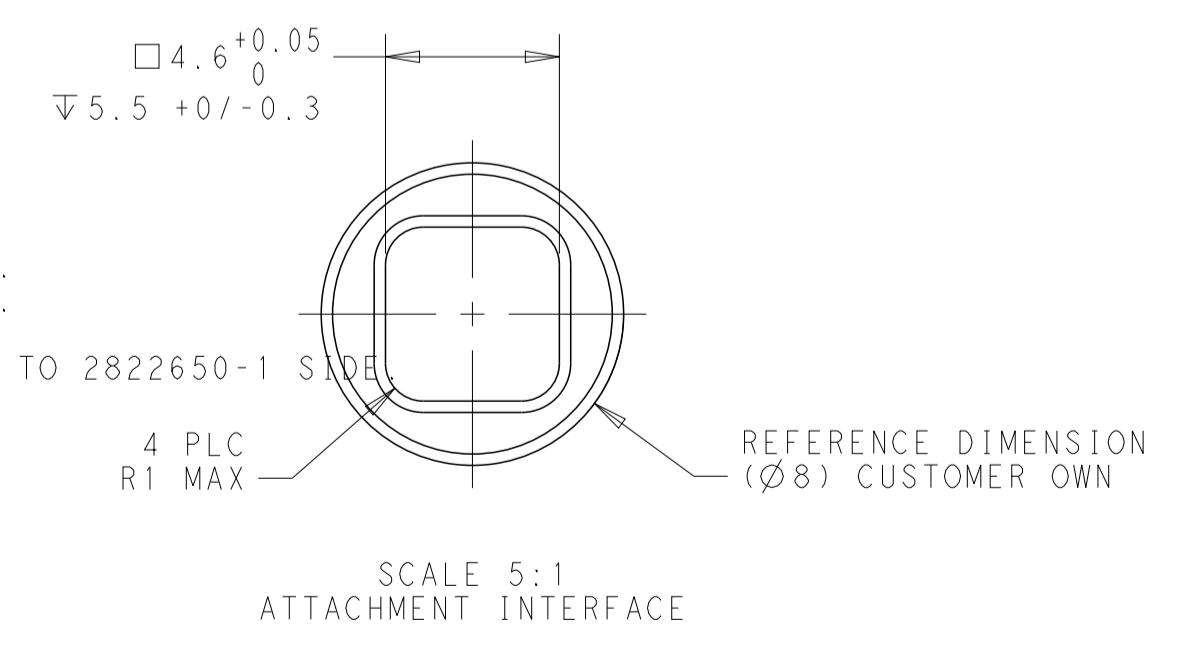
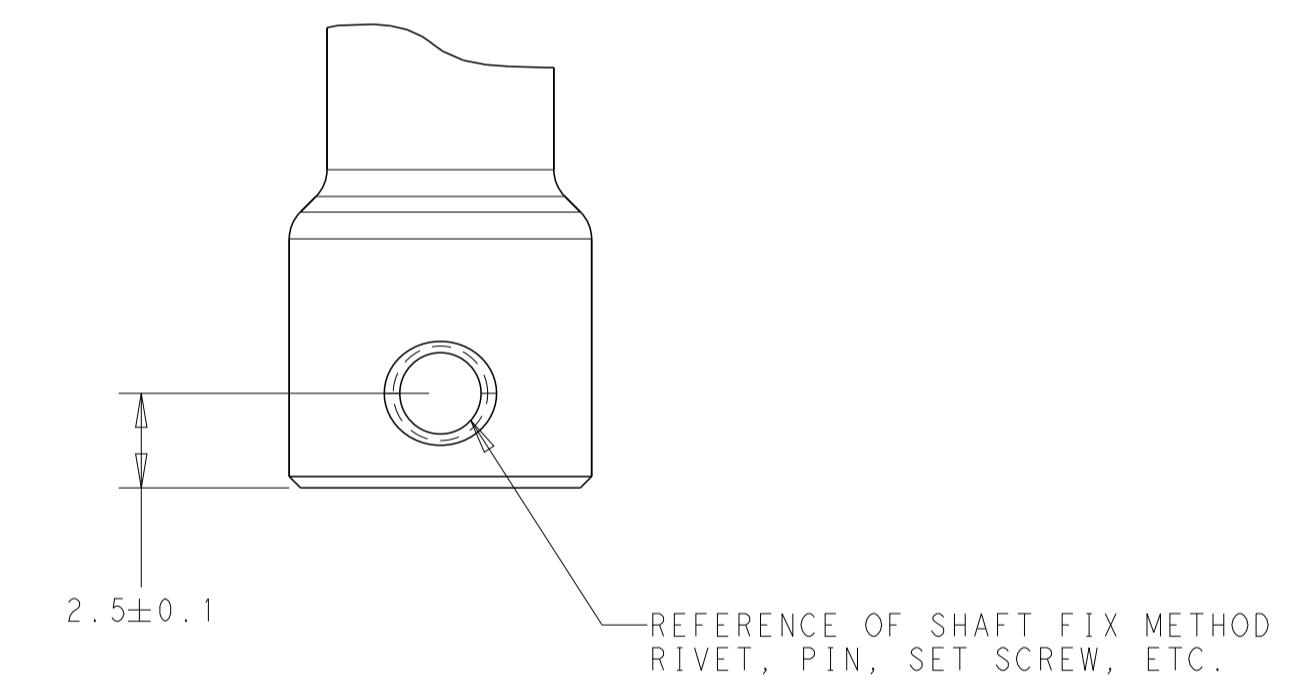
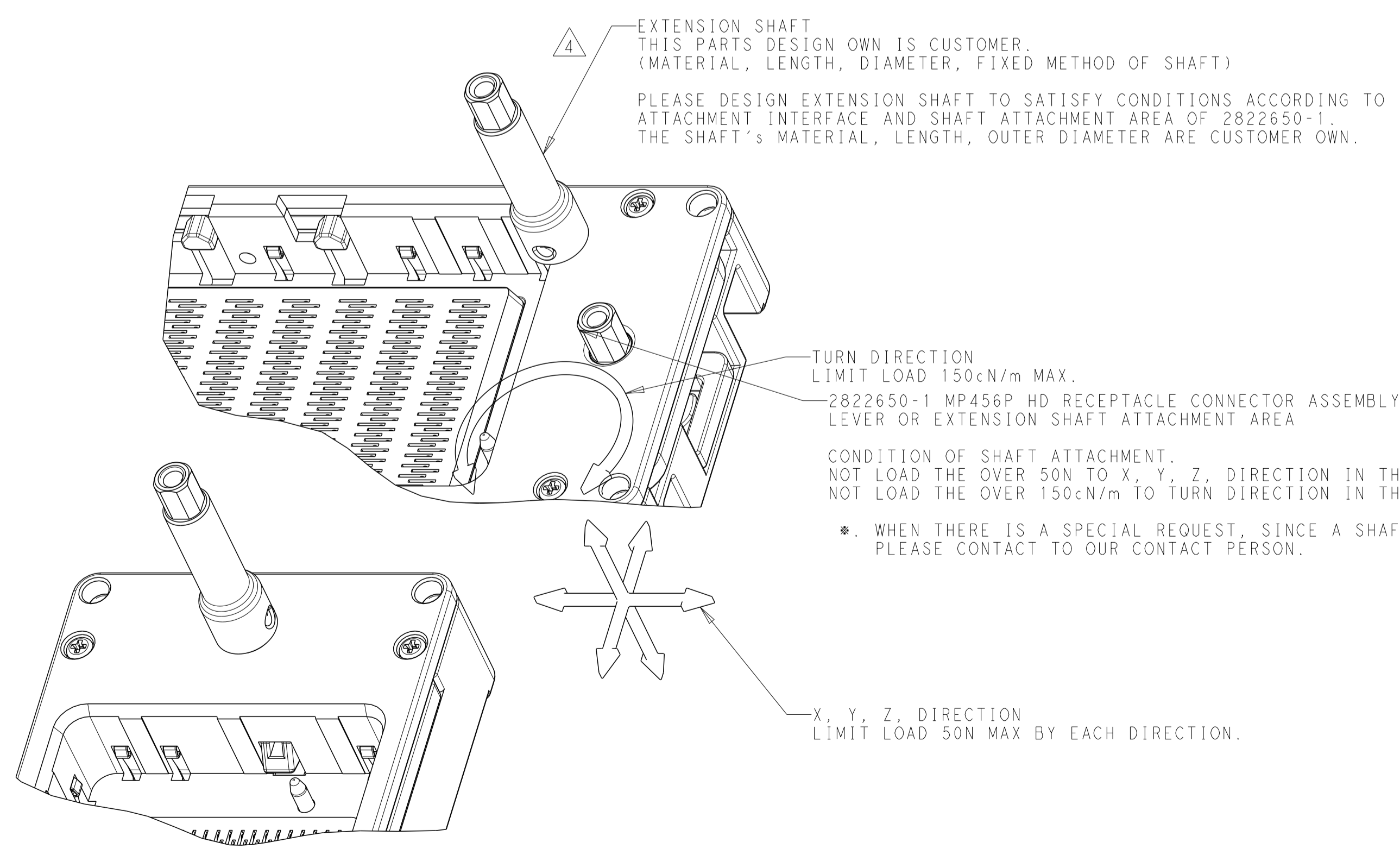
| | | | | |
|--|--|--------------------------------|----------------------------|-------------------------|
| THIS DRAWING IS A CONTROLLED DOCUMENT. | | OWN T. SASAKI 11MAR2014 | REVISITONS | |
| DIMENSIONS: mm | | CHK M. KIMURA 11MAR2014 | DESCRIPTION SEE SHEET 1 | DATE |
| TOLERANCES UNLESS OTHERWISE SPECIFIED: mm | | APVD M. KIMURA 11MAR2014 | DATE | OWN |
| Ø-PLC ±0.3 | | NAME S/N | DATE | APVD |
| Ø-PLC ±0.5 | | PRODUCT SPEC 108-140047 | | |
| Ø-PLC ±0.13 | | APPLICATION SPEC 114-5518 | | |
| Ø-PLC ±0.001 | | SIZE A1 | CAGE CODE - | DRAWING NO C=2822650 |
| ANGLES ±1.0 | | WEIGHT 308 g | RESTRICTED TO | |
| FINISH PL | | CUSTOMER DRAWING | SCALE 2:1 | SHEET 2 OF 7 |
| MATERIAL SEE SHEET 3 TABLE | | | | REV H |

CONFIDENTIAL

| REVISIONS | | | | |
|-----------|-------------|----|-----|------|
| REV | DATE | BY | CHK | APPV |
| - | SEE SHEET 1 | - | - | - |



- 4. WHEN ROTATE A LEVER 90 ± 10 DEGREES, THERE NEEDS TO BE A FEELING OF A CLICK. WHEN MATING WITH PLUG ASSY LEVER OPERATING TORQUE : $70 \text{cN}\cdot\text{m}$ MAX.
- 5. DIELECTRIC WITHSTAND VOLTAGE : 500VAC ,CURRENT LEAKAGE 0.5mA,2sec DISCONTINUITY TEST, TEST CONDITION : VOLTAGE 5VDC, 2sec. LEVER ANGLE : 90 ± 10 (LOCK AND CONNECT COMPLETE STATE)
- 6. STAMP A DATE CODE : YYWWD * (* IS LATEST PART REVISION. REF:PART REVISION IS A. YYWWD A)
- 7. M3 SCREWS TO BE MOUNTED USING TORQUE DRIVER. TORQUE : REFER TO 0.315N·m
- 8. USED MATERIAL AND FINISH ARE ON THE TABLE OF SHEET 3.
- 9. PCB MOUNT M3.0 SCREW AND PCB, PCB ASSEMBLY ARE CUSTOMER OWN COMPONENT. THESE CUSTOMER OWN COMPONENT SHOULD MEET TE RECOMMENDATION FOR CONNECTOR ASSEMBLY.



| QTY | MATERIAL | NAME | ITEM NO |
|-----|---------------------------------------|----------------------------------|---------|
| 4 | SUS / Alok | M2.5x4 FLAT HEAD SCREW WITH ALOK | 18 |
| AR | LUBRICANT GREASE | - | 17 |
| AR | LUBRICANT OIL | - | 16 |
| 4 | SUS / Alok | M2.0x0.4 L6 SHALLOW HEAD SCREW | 15 |
| 1 | MISUMI BSZF3 OR EQUIVALENT PRODUCT | BALL PRANGER | 14 |
| 1 | SUS | LOCK BLOCK SPRING | 13 |
| 1 | SUS MIM | SHAFT LOCK BLOCK | 12 |
| 2 | SUS | POST PIN | 11 |
| 1 | Zn ALLOY DIE-CAST FINISH : Ni PLATING | UPPER SHELL | 10 |
| 1 | Zn ALLOY DIE-CAST FINISH : Ni PLATING | LOCK PLATE | 9 |
| 1 | LCP GF10 | UPPER HOUSING | 8 |
| 1 | PA9T GF30 | LIFT PLATE | 7 |
| 1 | SUS MIM | CAM SHAFT | 6 |
| 1 | PA9T GF30 | SLIDE PLATE | 5 |
| 27 | PH BRONZE FINISH : Au, Ni PLATING | SHIELD FINGER | 4 |
| 12 | LCP GF10 | CONTACT HOUSING | 3 |
| 456 | COPPER ALLOY FINISH : Au, Ni PLATING | RECEPTACLE CONTACT | 2 |
| 1 | Zn ALLOY DIE-CAST FINISH : Ni PLATING | BASE HOUSING | 1 |

THIS DRAWING IS A CONTROLLED DOCUMENT.

OWN: T. SASAKI 11MAR2014
 CHK: M. KIMURA 11MAR2014
 APVD: M. KIMURA 11MAR2014

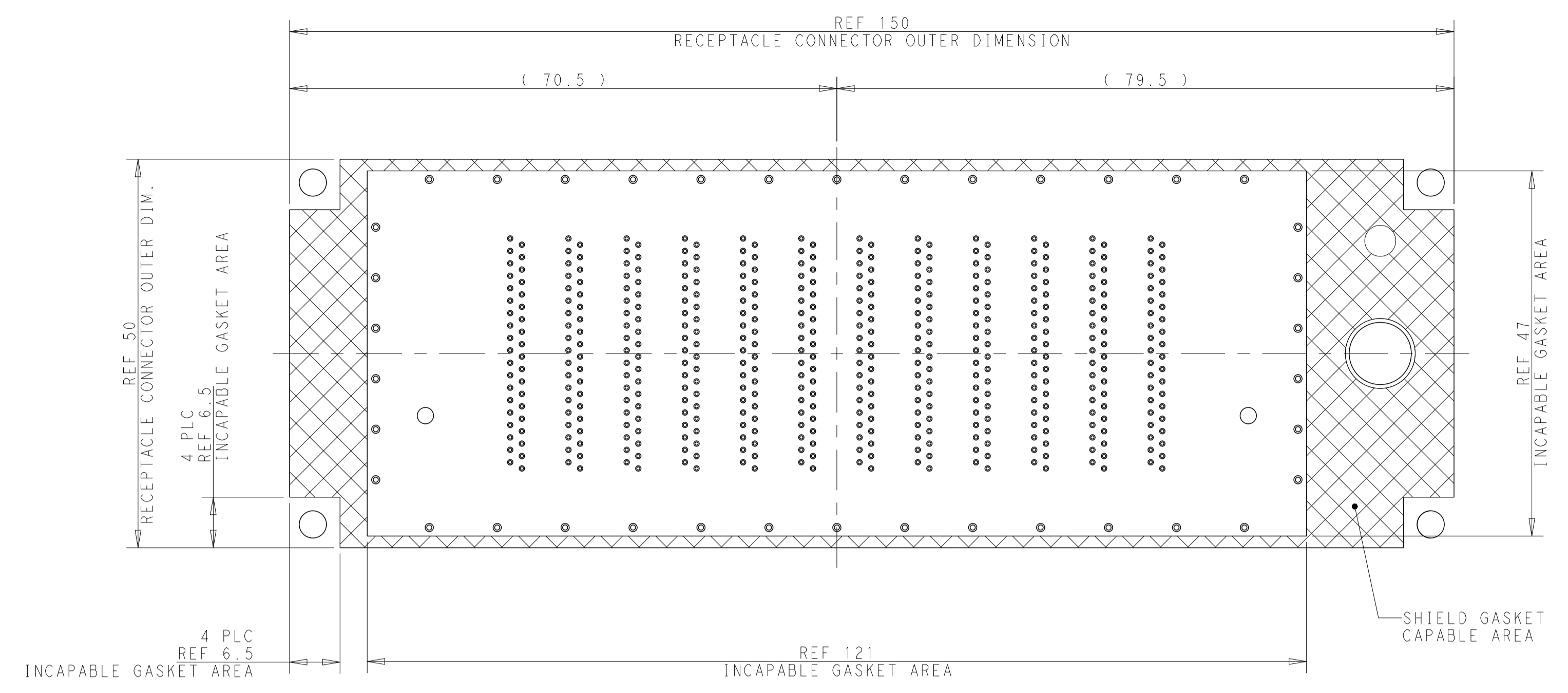
TE Connectivity

RECEPTACLE CONNECTOR
 456P RECEPTACLE ASSEMBLY
 BEEHIVE I/O CONNECTOR SERIES

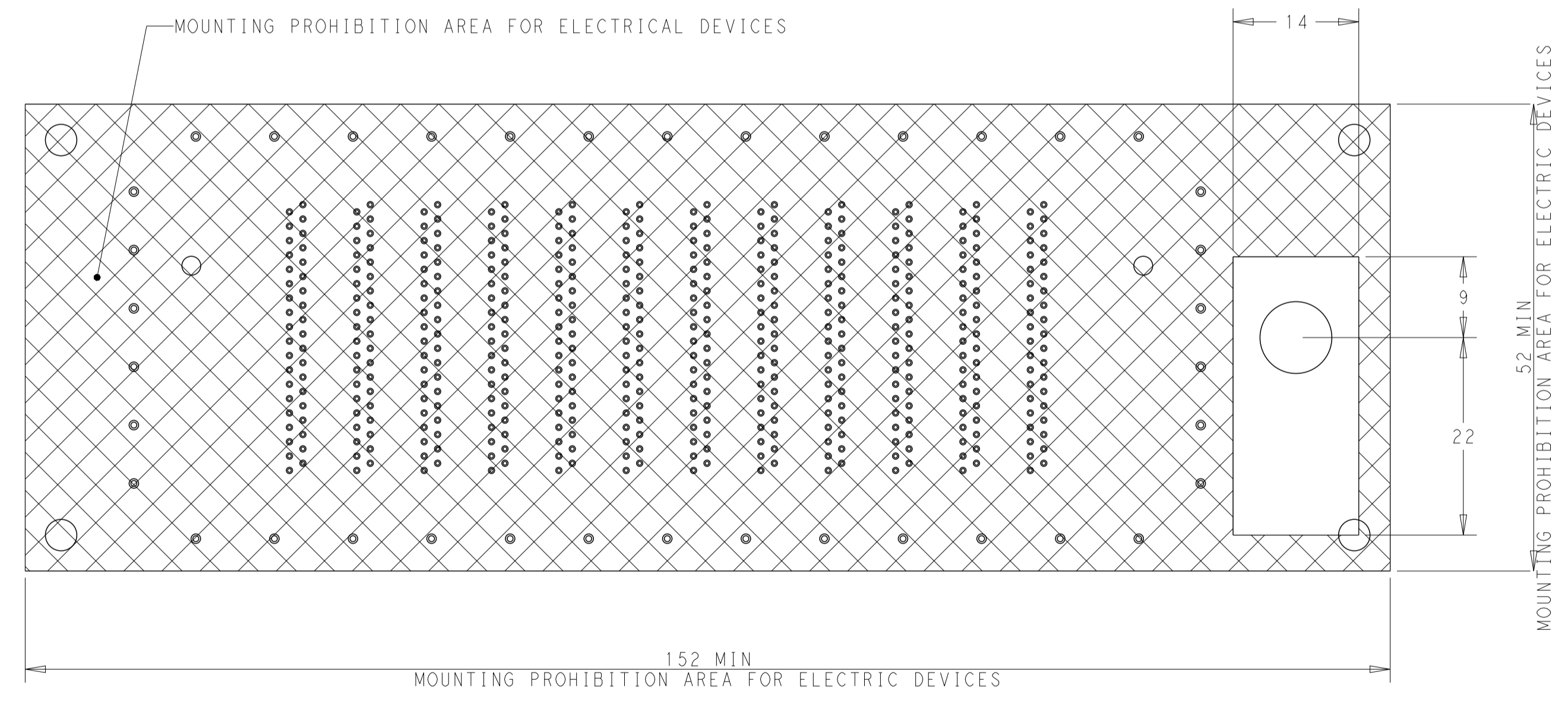
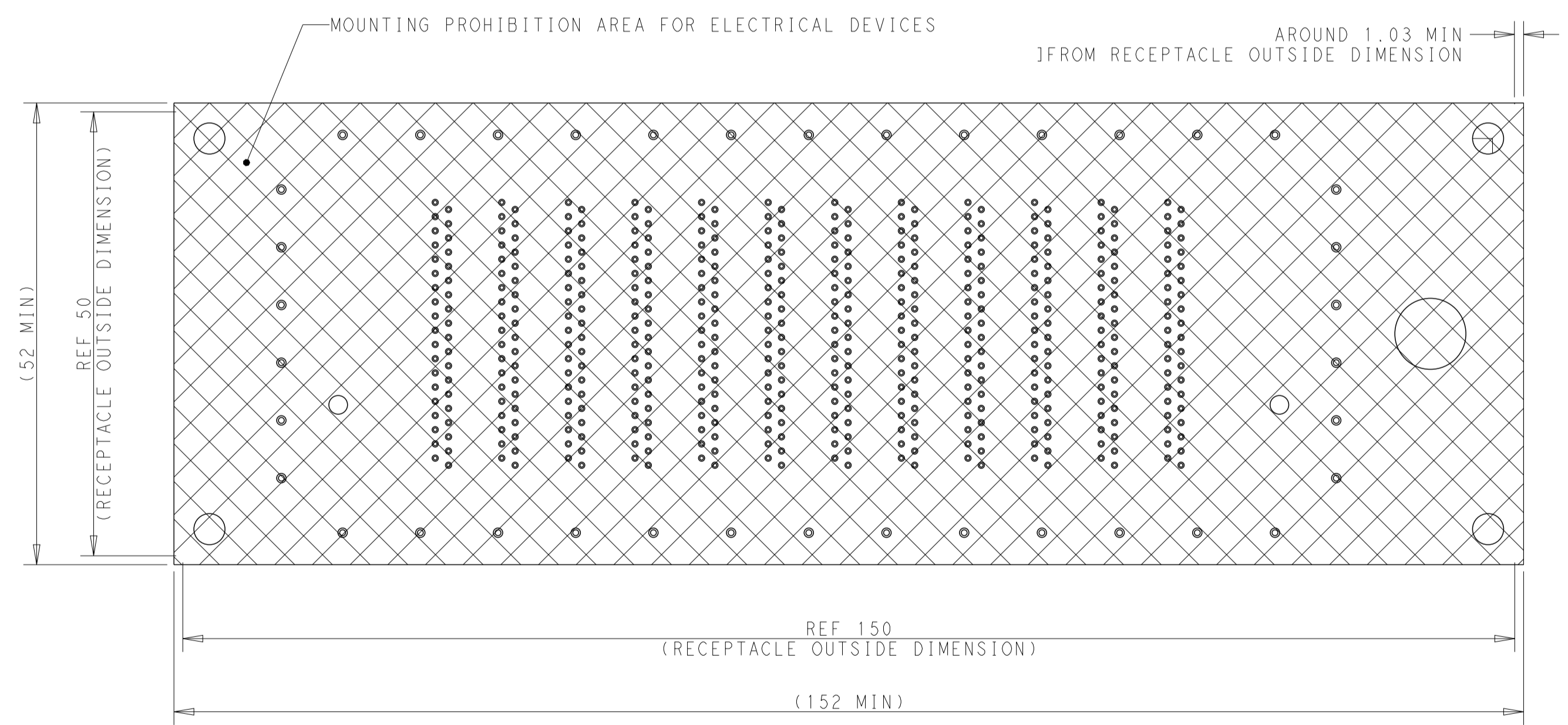
SIZE: A1
 CAGE CODE: -
 DRAWING NO: C=2822650
 WEIGHT: 308 g
 SCALE: 2:1
 SHEET: 3 of 7
 REV: H

CONFIDENTIAL

| REVISIONS | | | | |
|-----------|------|-------------|------|-------|
| P. | LTN. | DESCRIPTION | DATE | APVD. |
| - | - | SEE SHEET 1 | - | - |
| | | | | |
| | | | | |



SCALE 2:1
SHIELD GASKET AREA

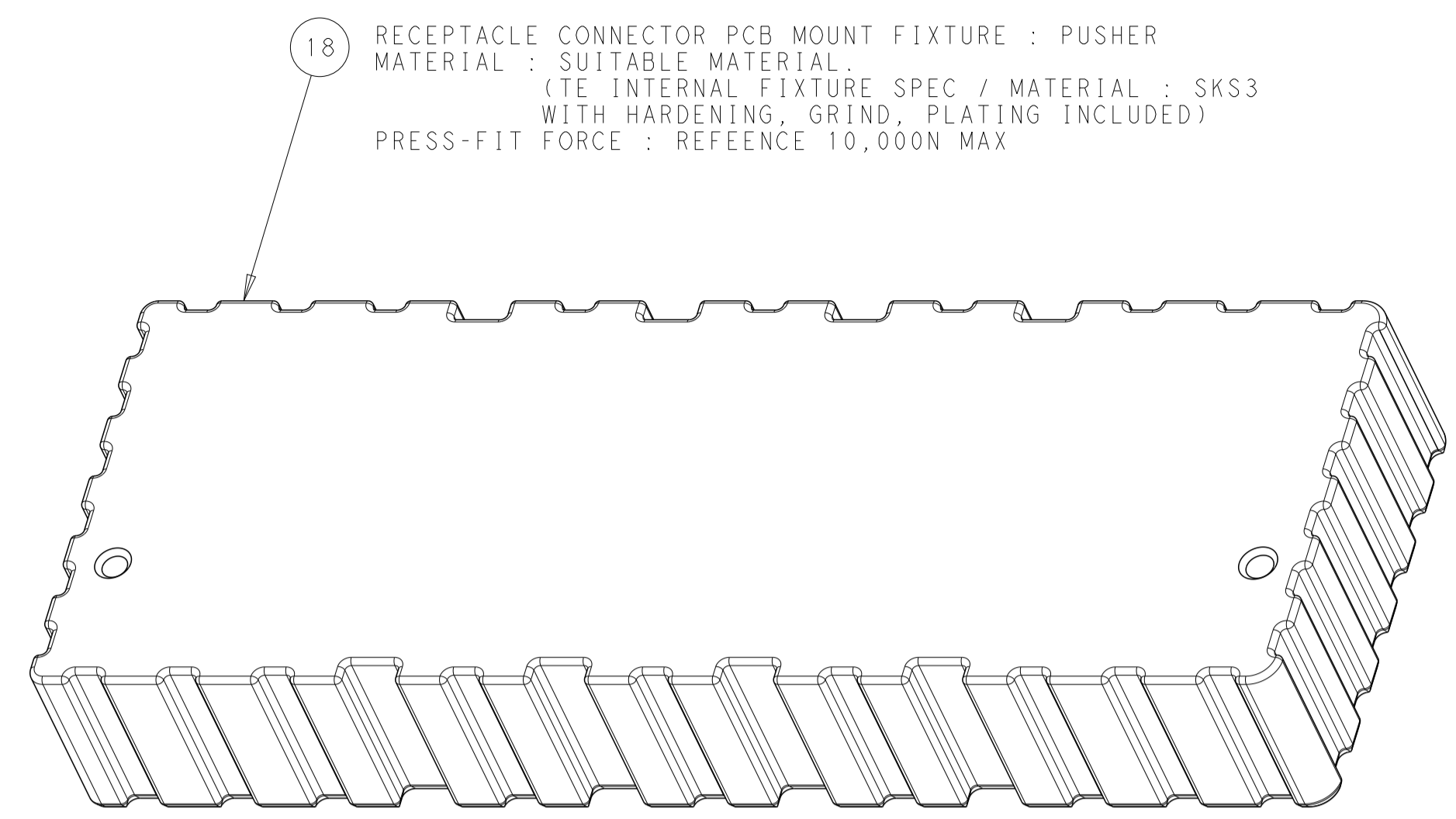


ELECTRIC DEVICES MOUNTING CONSTRAINT AREA

| | | | | | | | | | | | | | |
|--|---------|--------------------------------|-------------------------|-------|-------|-------|--------|-------|-------|-------|---------|----------------------------|--|
| THIS DRAWING IS A CONTROLLED DOCUMENT. | | OWN T. SASAKI 11MAR2014 | | | | | | | | | | | |
| DIMENSIONS: mm | | CHK M. KIMURA 11MAR2014 | | | | | | | | | | | |
| TOLERANCES UNLESS OTHERWISE SPECIFIED: mm | | APVD M. KIMURA 11MAR2014 | NAME SPE | | | | | | | | | | |
| <table border="1"> <tr><td>0-PLC</td><td>± 0.3</td></tr> <tr><td>1-PLC</td><td>± 0.5</td></tr> <tr><td>2-PLC</td><td>± 0.75</td></tr> <tr><td>3-PLC</td><td>± 0.9</td></tr> <tr><td>4-PLC</td><td>± 0.001</td></tr> </table> | | 0-PLC | ± 0.3 | 1-PLC | ± 0.5 | 2-PLC | ± 0.75 | 3-PLC | ± 0.9 | 4-PLC | ± 0.001 | PRODUCT SPEC 108-140047 | RECEPTACLE CONNECTOR 456P RECEPTACLE ASSEMBLY BEEHIVE I/O CONNECTOR SERIES |
| 0-PLC | ± 0.3 | | | | | | | | | | | | |
| 1-PLC | ± 0.5 | | | | | | | | | | | | |
| 2-PLC | ± 0.75 | | | | | | | | | | | | |
| 3-PLC | ± 0.9 | | | | | | | | | | | | |
| 4-PLC | ± 0.001 | | | | | | | | | | | | |
| MATERIAL SEE SHEET 3 TABLE | | APPLICATION SPEC 114-5518 | SIZE A1 | | | | | | | | | | |
| FINISH SEE SHEET 3 TABLE | | WEIGHT - | DRAWING NO C=2822650 | | | | | | | | | | |
| | | CUSTOMER DRAWING | RESTRICTED TO H | | | | | | | | | | |

CONFIDENTIAL

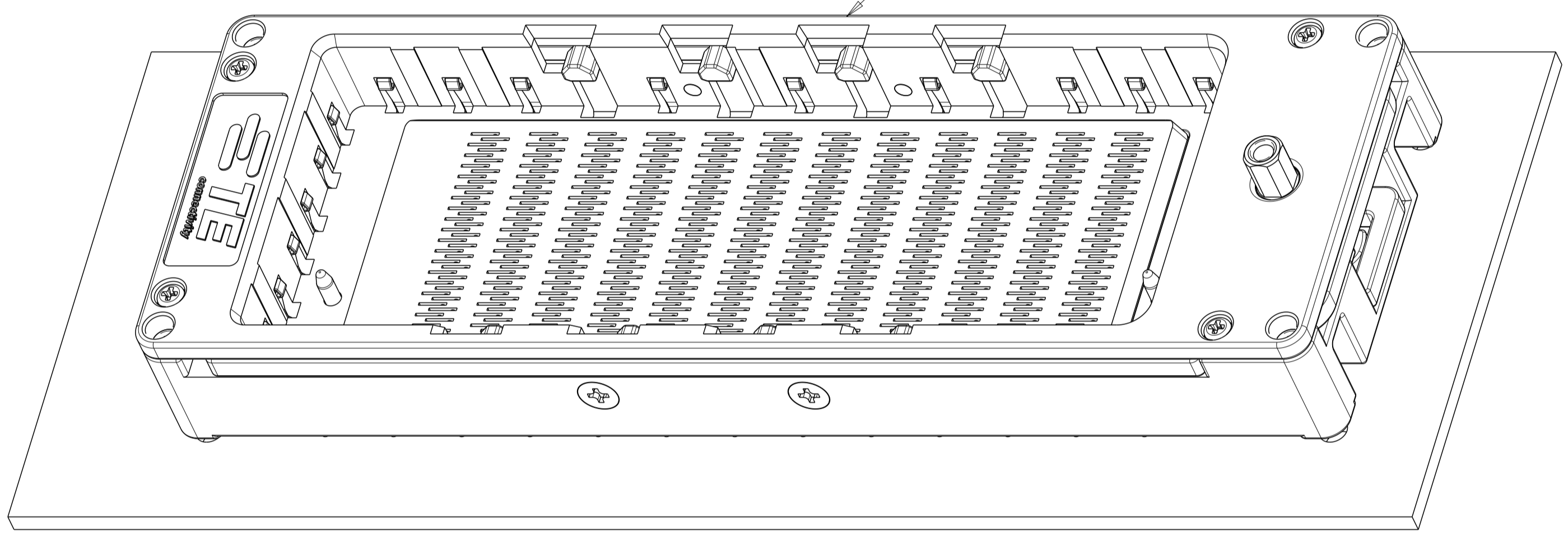
| LOC | DIST | REVISIONS | | | |
|-----|------|-------------|------|-----|------|
| P | LTN | DESCRIPTION | DATE | DMN | APVD |
| | | SEE SHEET 1 | | | |
| | | | | | |
| | | | | | |



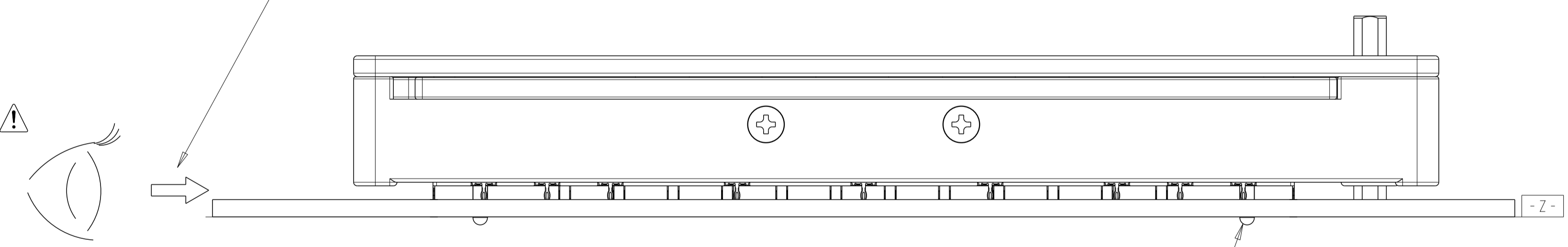
18 RECEPTACLE CONNECTOR PCB MOUNT FIXTURE : PUSHER
 MATERIAL : SUITABLE MATERIAL
 (TE INTERNAL FIXTURE SPEC / MATERIAL : SKS3
 WITH HARDENING, GRIND, PLATING INCLUDED)
 PRESS-FIT FORCE : REFERENCE 10,000N MAX

MP456P HD RECEPTACLE CONNECTOR
 P/N : 2822650-*

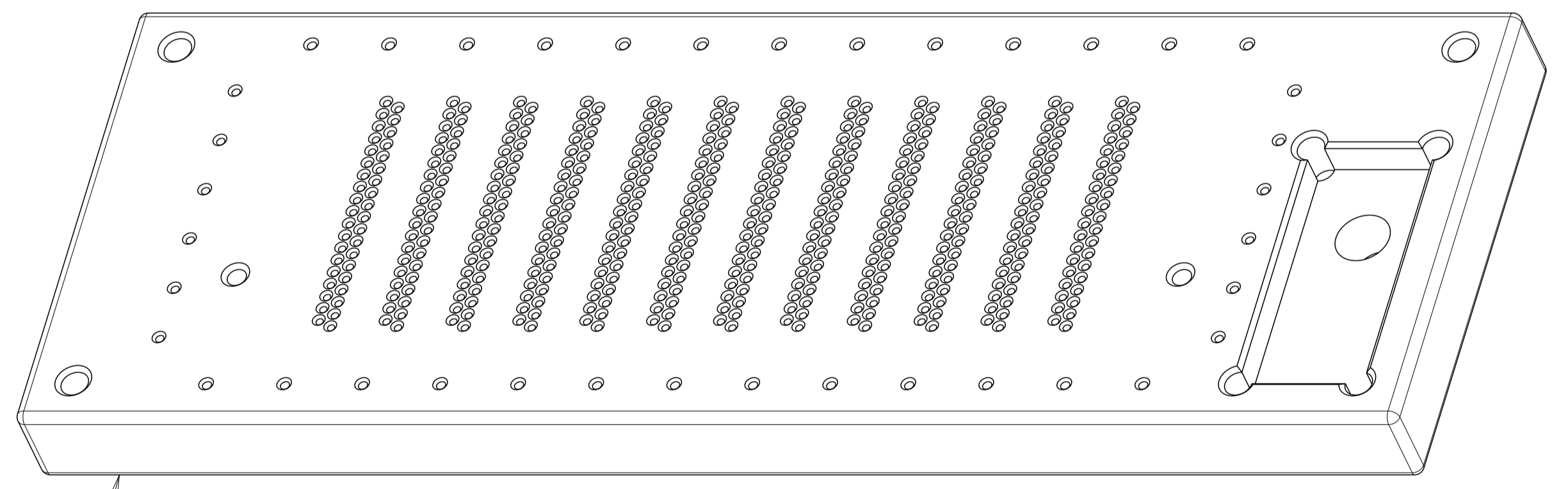
! IMPORTANT !
 MUST BE APPLY THE LUBRICANT OIL TO ALL
 PRESS-FIT CONTACT AND EACH PCB THROUGH HOLE.



BEFORE DOING PRESS-FIT OPERATION, MUST BE SURE TO CONFIRM THE NEXT THING BY YOUR EYES.
 THERE IS NO UNUSUAL CONDITION IN A CONTACT AND A PCB.
 THAT ALL PCB HOLES AND LOCATIONS OF THE CONTACT ARE FIT.



WHEN THE THICKNESS OF PCB IS BIG, THE POSITIONING PINS DOES NOT WORK POSITIONING OF 2822650-*.
 PLEASE ADD A BEARING PIN TO BASE FIXTURE SO THAT THE LOCATION MAY BE DECIDED AT A HOLE IN A CORNER
 AND M3 HOLE OF 2822650-* OF BASE FIXTURE IN THIS CASE.



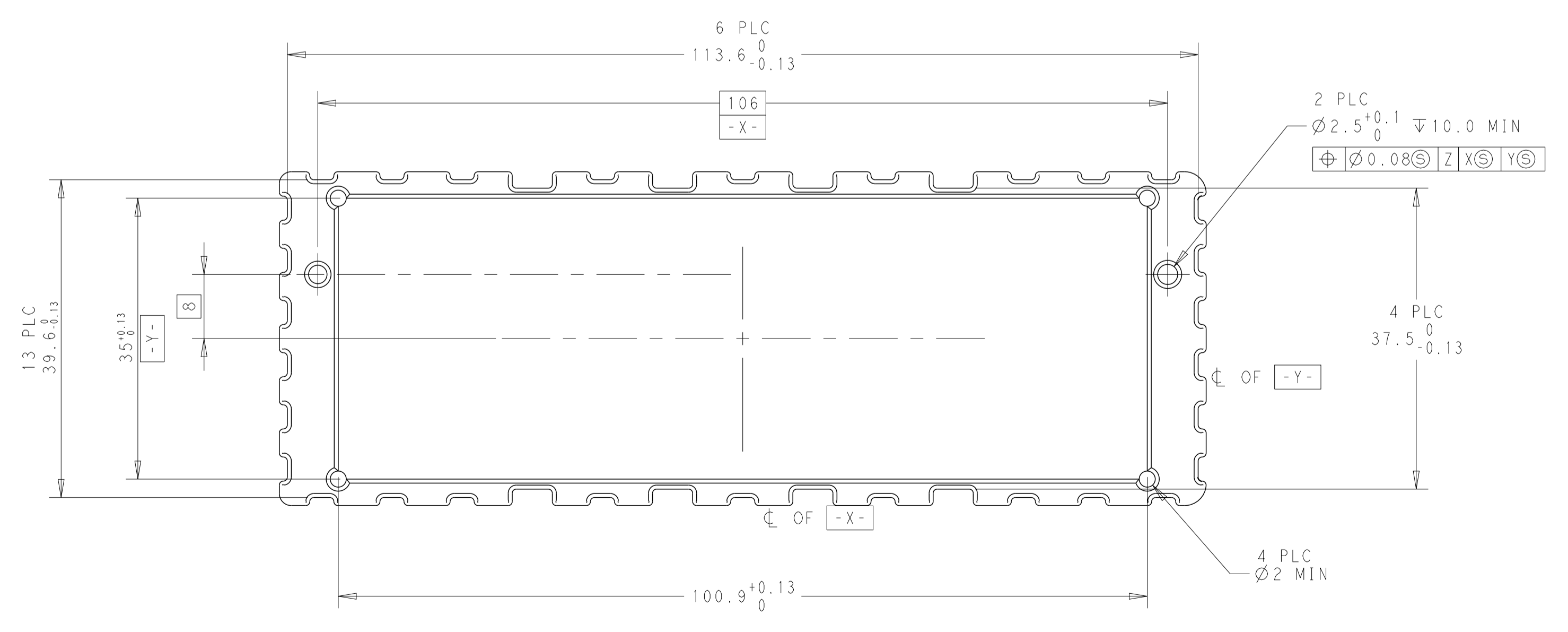
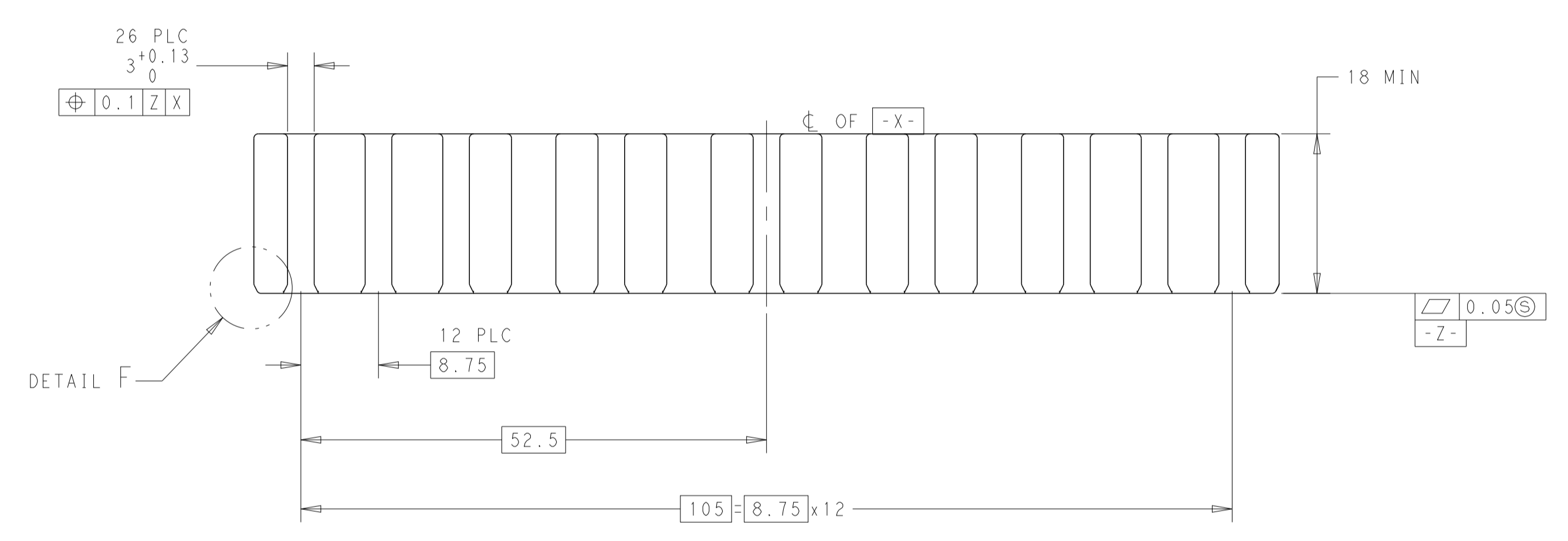
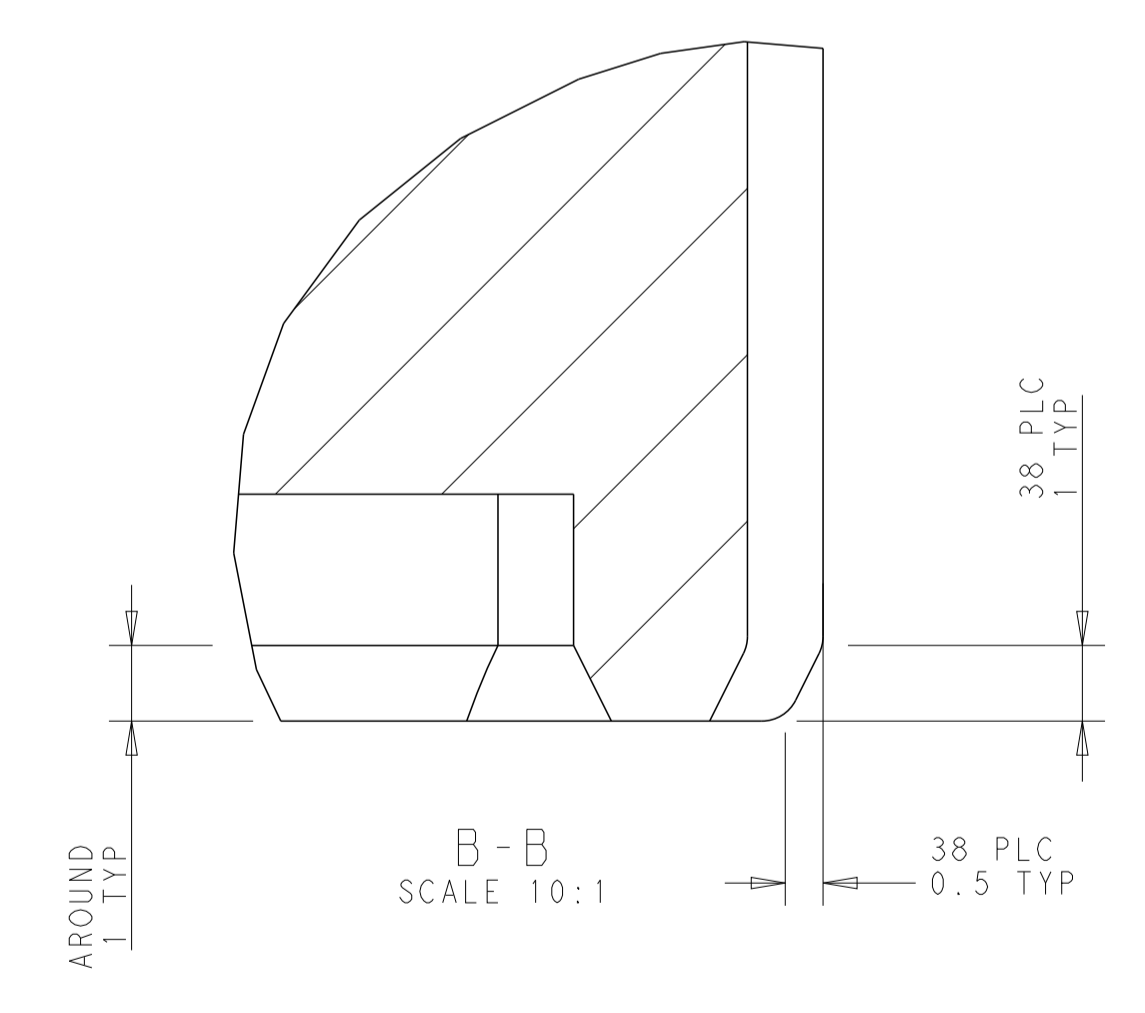
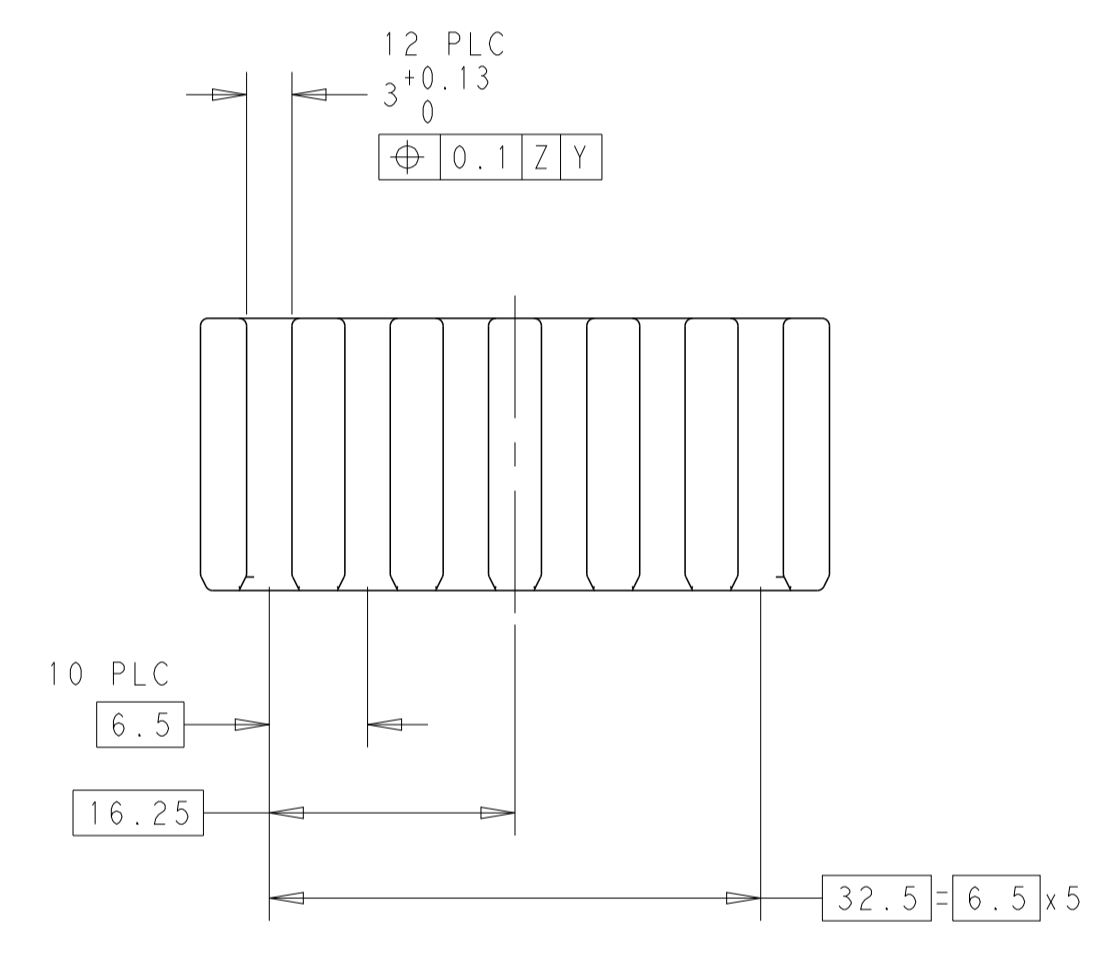
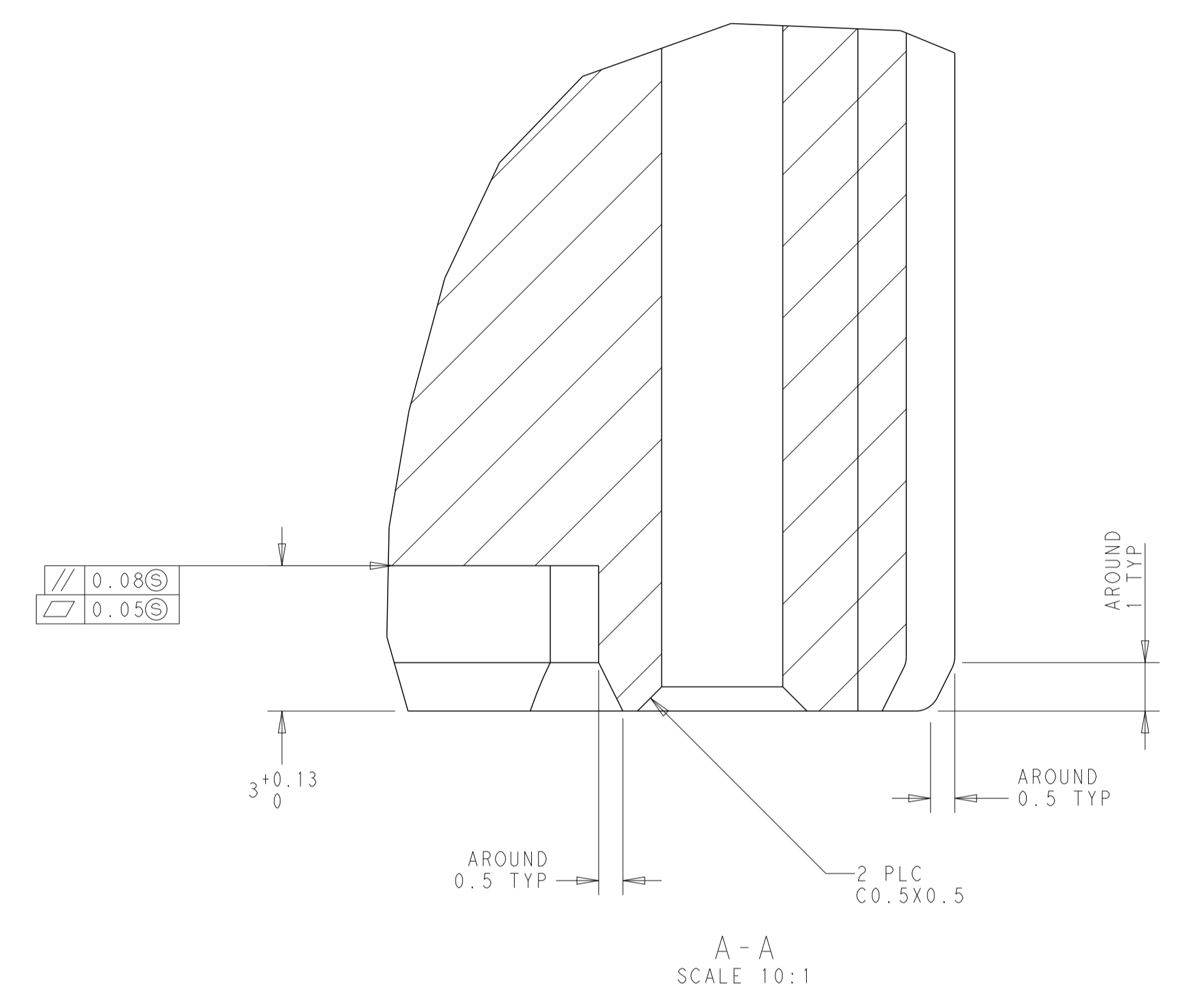
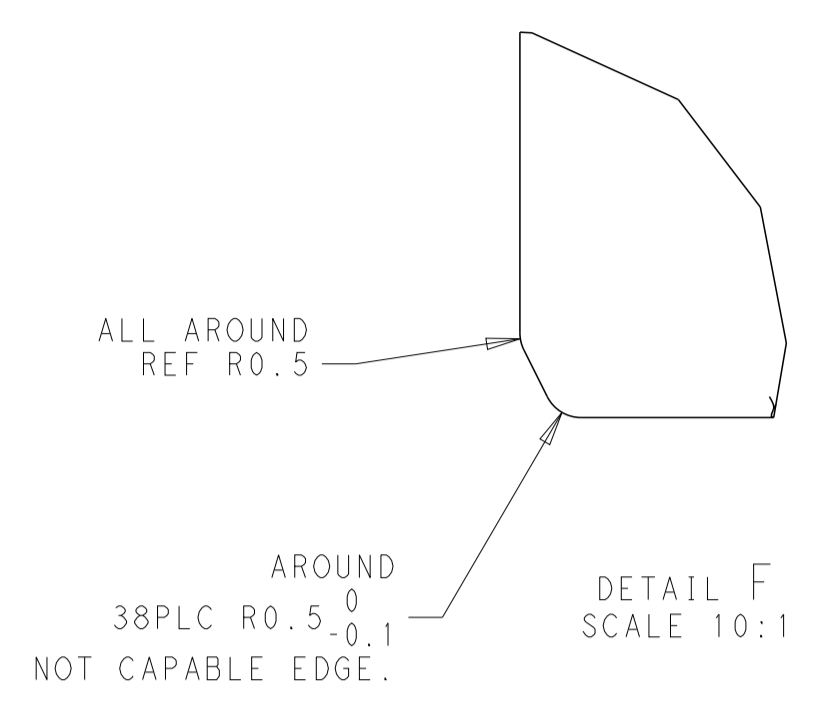
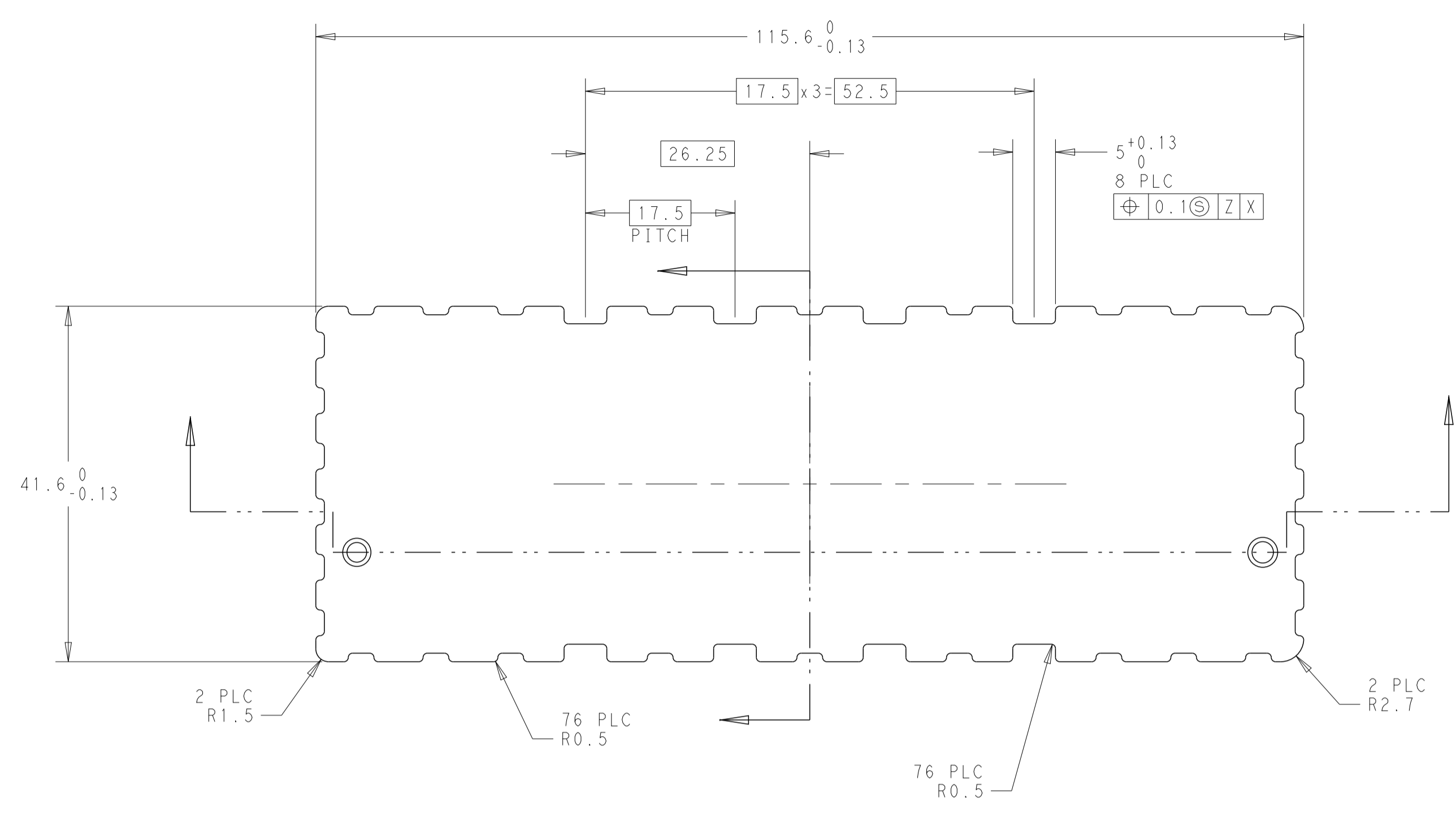
19 RECEPTACLE CONNECTOR PCB MOUNT FIXTURE : BASE
 MATERIAL : SUITABLE MATERIAL
 (TE INTERNAL FIXTURE SPEC / MATERIAL : SKS3
 WITH HARDENING, GRIND, PLATING INCLUDED)

! IMPORTANT !
 PLEASE CUSTOMIZE ACCORDING TO THE STATE OF THE PCB AND THE USE SITUATION.

| | | | |
|---|--|--------------------------------|--|
| THIS DRAWING IS A CONTROLLED DOCUMENT. | | DMN Y. SASAKI 11MAR2014 | TE Connectivity |
| DIMENSIONS: mm | | CHK M. KIMURA 11MAR2014 | |
| TOLERANCES UNLESS OTHERWISE SPECIFIED: ± 0.3 | | APVD M. KIMURA 11MAR2014 | NAME RECEPTACLE CONNECTOR 456P RECEPTACLE ASSEMBLY BEEHIVE I/O CONNECTOR SERIES |
| 0-PLC ± 0.3 | | PRODUCT SPEC | SIZE A1 |
| 1-PLC ± 0.5 | | 108-140047 | CAGE CODE - |
| 2-PLC ± 0.13 | | APPLICATION SPEC | DRAWING NO C=2822650 |
| 3-PLC ± 0.03 | | 114-5518 | RESTRICTED TO - |
| 4-PLC ± 0.001 | | WEIGHT - | SCALE 2:1 |
| ANGLES ± 1.0 | | CUSTOMER DRAWING | SHEET 5 of 7 |
| FINISH SEE SHEET 5 | | | REV H |

CONFIDENTIAL

| LOC | DIST | REVISIONS | | | |
|-----|------|-------------|------|-----|------|
| P | LTN | DESCRIPTION | DATE | DWN | APVD |
| - | - | SEE SHEET 1 | - | - | - |
| | | | | | |
| | | | | | |



| | | | | |
|---|--|-----------------------------------|--|--|
| THIS DRAWING IS A CONTROLLED DOCUMENT. | | DWN Y. SASAKI 11MAR2014 | TE Connectivity | |
| DIMENSIONS: mm | | CHK M. KIMURA 11MAR2014 | NAME RECEPTACLE CONNECTOR 456P RECEPTACLE ASSEMBLY BEEHIVE I/O CONNECTOR SERIES | |
| TOLERANCES UNLESS OTHERWISE SPECIFIED: ± 0.3 | | APVD M. KIMURA 11MAR2014 | PRODUCT SPEC 108-140047 | |
| 0-PLC ±0.5 | | APPLICATION SPEC 114-5518 | | |
| 1-PLC ±0.5 | | RESTRICTED TO A1 | | |
| 2-PLC ±0.13 | | SCALE 2:1 SHEET 6 OF 7 REV H | | |
| 3-PLC ±0.13 | | CUSTOMER DRAWING | | |
| 4-PLC ±0.001 | | CAGE CODE DRAWING NO C=2822650 | | |
| ANGLES ±1.0 | | WEIGHT | | |
| FINISH SEE SHEET 5 | | MATERIAL SEE SHEET 5 | | |

单击下面可查看定价，库存，交付和生命周期等信息

[>>TE Connectivity\(泰科\)](#)