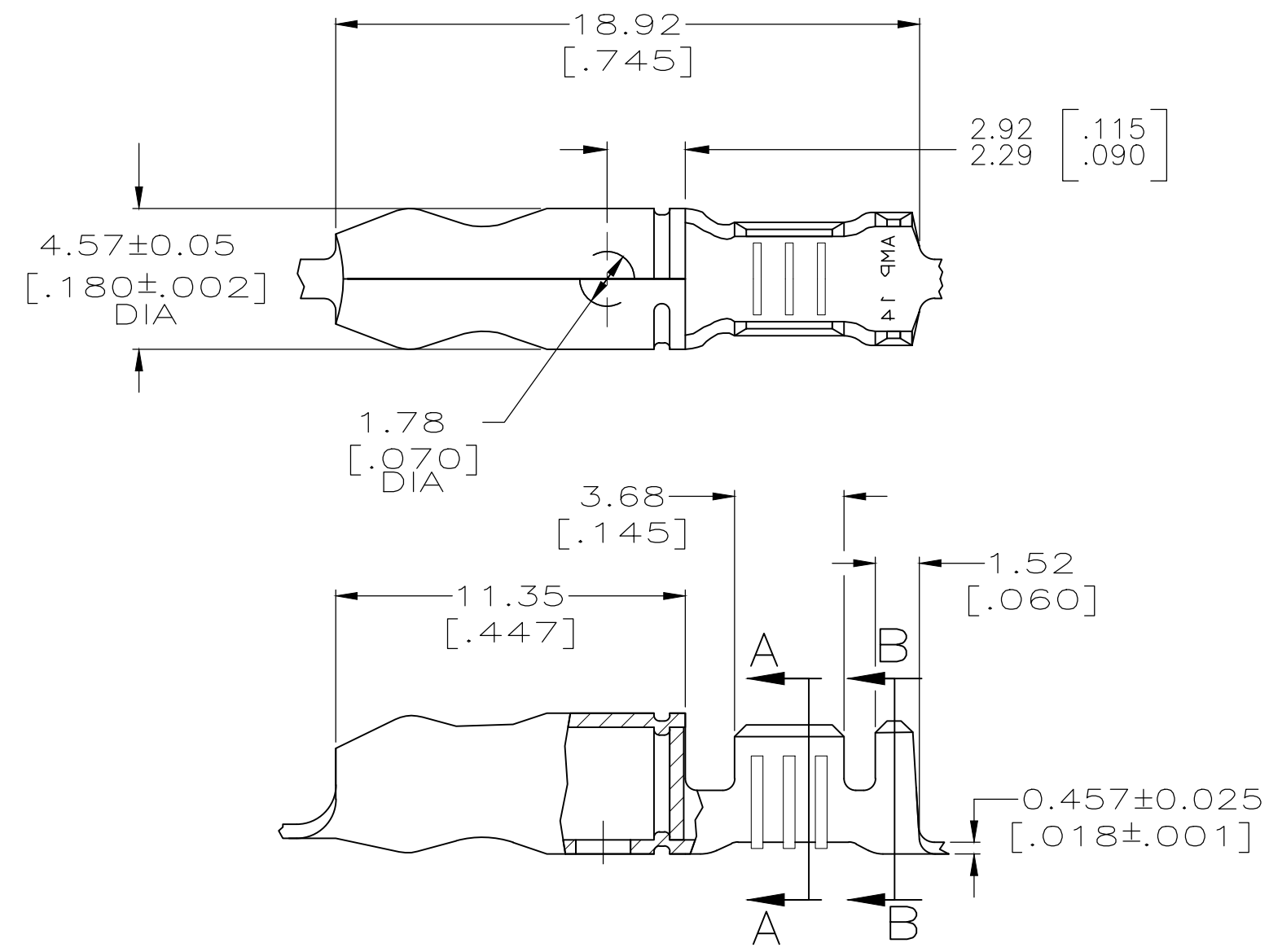
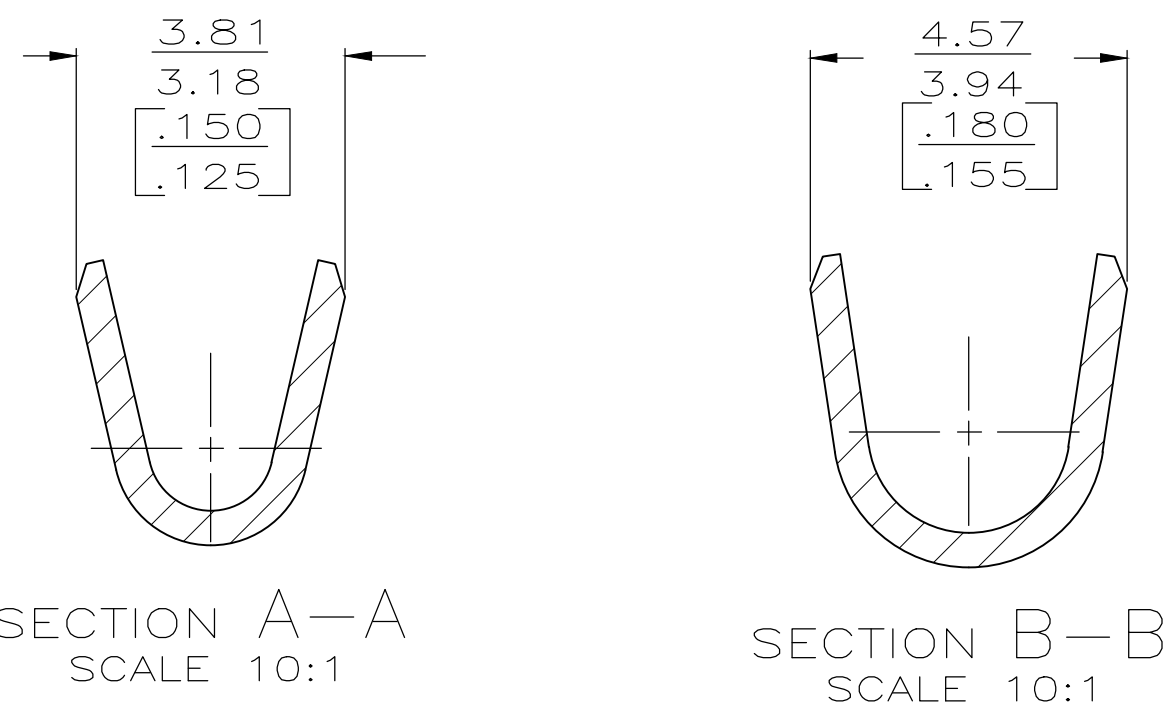


THIS DRAWING IS UNPUBLISHED. RELEASED FOR PUBLICATION
 © COPYRIGHT - By - ALL RIGHTS RESERVED.

REVISIONS				
P	LTR	DESCRIPTION	DATE	APVD
	R4	REVISED PER ECR-19-006625	17JUN2019	LZ TD



- 1 CONTINUOUS STRIP ON REEL.
- △2 0.002032 [.000080] MIN TIN PLATE.
- △3 0.002032 [.000080] MIN TIN PLATE OVER 0.00127 [.000050] MIN NICKEL UNDERPLATE.
- △4 WITH INTERLEAVING PAPER
- △5 0.00508 [.000200] MIN SILVER PLATE OVER 0.00127 [.000050] MIN NICKEL PLATE
- △6 0.000762 [.000030] MIN GOLD OVER 0.00127 [.000050] MIN NICKEL UNDERPLATE.
- 7 WIRE SIZE IS [#18-#14] AWG
- 8 INSULATION RANGE IS 2.29-3.18 [.090-.125] DIA
- △9 PRELIMINARY - NOT FOR PRODUCTION



OBSOLETE	△5	081 BRASS	60793-7
	△6	081 BRASS	△9 60793-6
	△2	081 BERYLLIUM COPPER	△9 60793-5 △4
	△2	081 BRASS	60793-4
	△3	081 BRASS	60793-3
	△2	081 BRASS	60793-1
		FINISH	MATERIAL
			PART NUMBER

THIS DRAWING IS A CONTROLLED DOCUMENT.		DWN 11/NOV/96 PHILLIP M FORTNEY	STE TE Connectivity	
		CHK 11/NOV/96 JEFF R RUTH		
DIMENSIONS: mm [INCHES]		APVD 11/NOV/96 GARY YETTER	NAME	
		PRODUCT SPEC		SHUR PLUG, 4.57 [.180] DIA
		APPLICATION SPEC		
MATERIAL SEE TABLE	FINISH SEE TABLE	WEIGHT 0.000000	SIZE A3	CAGE CODE 00779
CUSTOMER DRAWING			DRAWING NO C-60793	RESTRICTED TO -
			SCALE 5:1	SHEET 1 OF 1
			REV R4	

单击下面可查看定价，库存，交付和生命周期等信息

[>>TE Connectivity\(泰科\)](#)