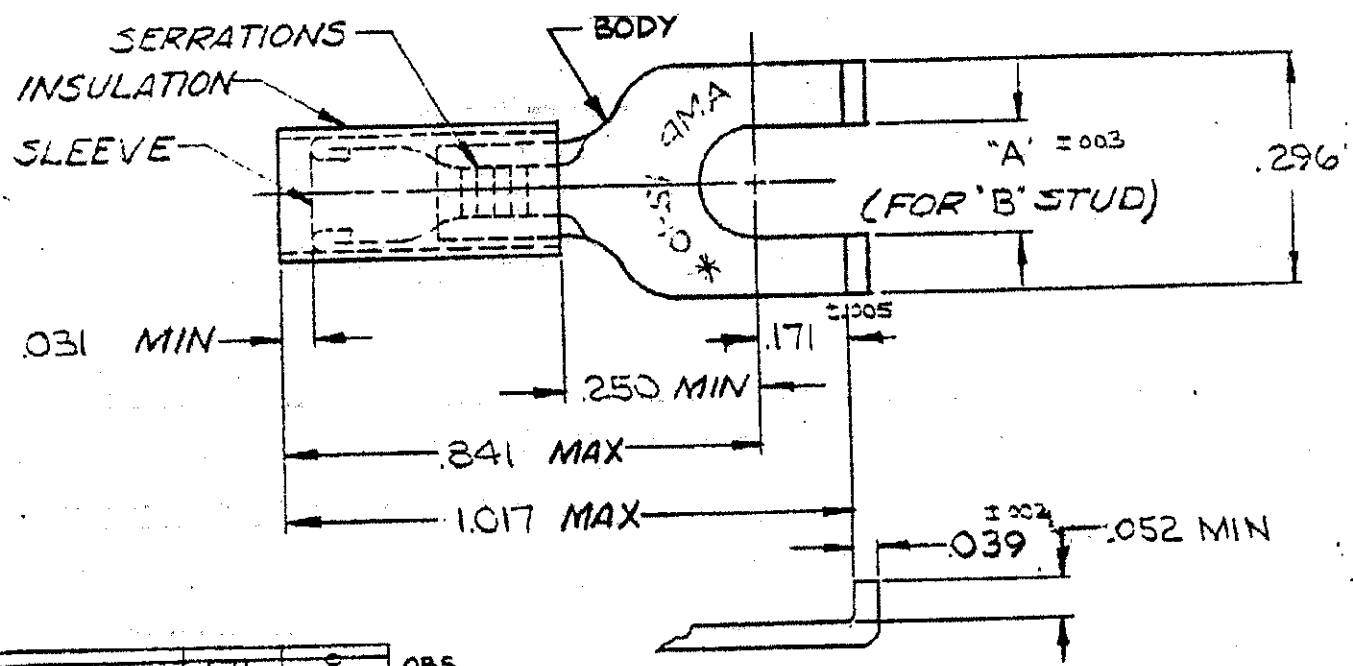


DRAWING MADE IN AMERICAN PROJECTION

REVISIONS			
LTR	DESCRIPTION	DATE	APPROVED
K1	REVISED PER ECO-11-005294	11APR11	HMR



1-325150-0	.171	S	OBS.
1-325150-0	.145	G	
325150			
PART NO.	"A"	"B"	

FOR .150 TO .250 WIRE INS. DIA.

1	WIRE TERMINAL	1-325150-0
1	325150 ON TAPE	1-325150-0
50	LOOSE PC. BOX	3-325150-2
1	WIRE TERMINAL	325150

SLEEVE: COPPER (QQ-C-576)
 BODY: COPPER (QQ-C-576)
 TIN PL (MIL-T-10727)
 INSULATION: NYLON
 COLOR: YELLOW
 MATERIAL & FINISH

UNLESS OTHERWISE SPECIFIED DIMENSIONS ARE IN INCHES TOLERANCES ON: DECIMALS = .008 ANGLES = 5°	CONTRACT NO.	
	DR.	5-13-70
	CHK.	5-13-70
	APPD	Label 5-13-70
	REL	5-13-70
MATERIAL	DSGN/APPD	
SEE TABLE	OTHER APPD	

TE TE Connectivity		
NAME: WIRE TERMINAL		
P.I.D.G. - FLANGED SPADE		
WIRE SIZE: 12-10		
SIZE	CODE IDENT NO.	NUMBER
A	00779	325150

SCALE NTS SHEET 1 OF 1
CUSTOMER DRAWING

单击下面可查看定价，库存，交付和生命周期等信息

[>>TE Connectivity\(泰科\)](#)