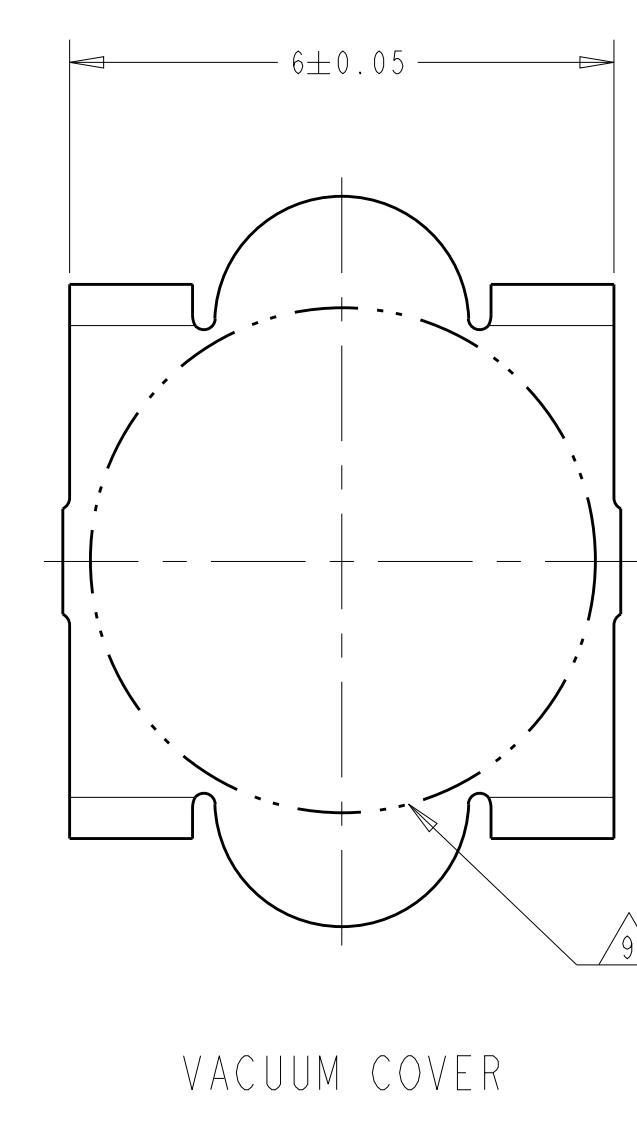
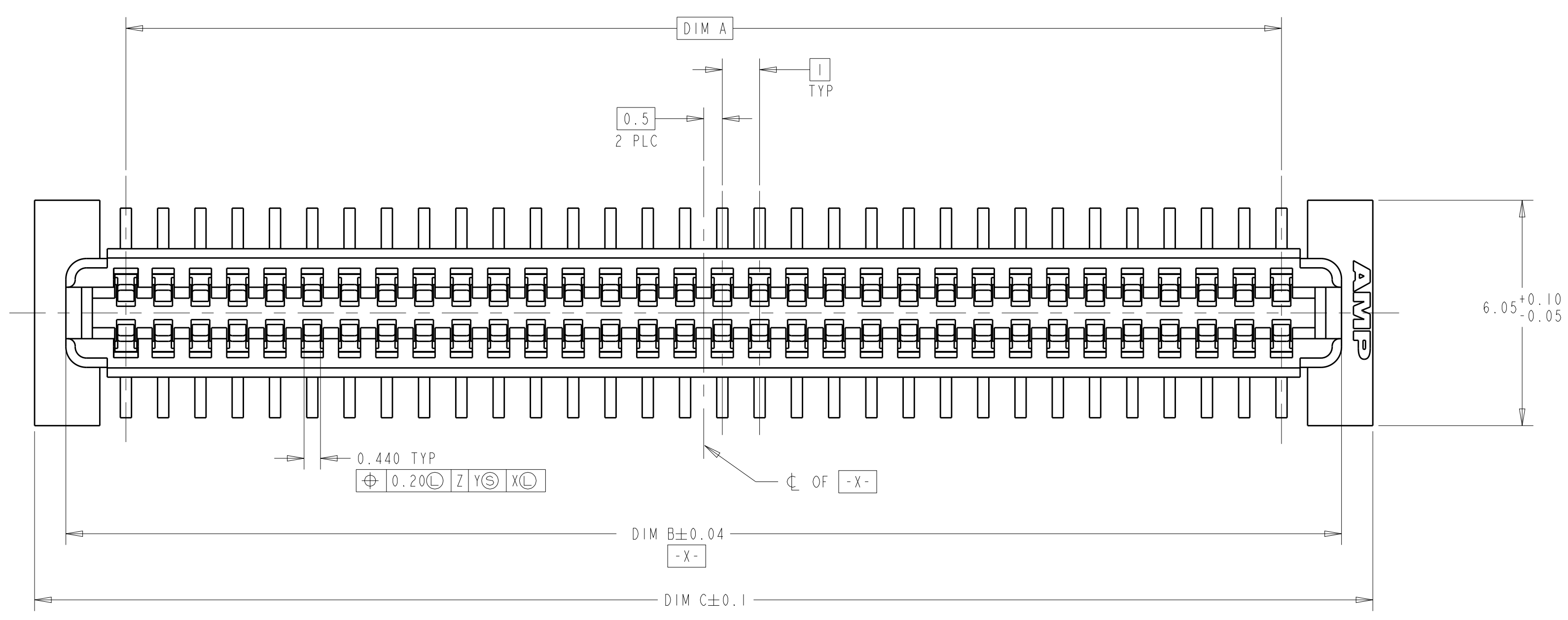
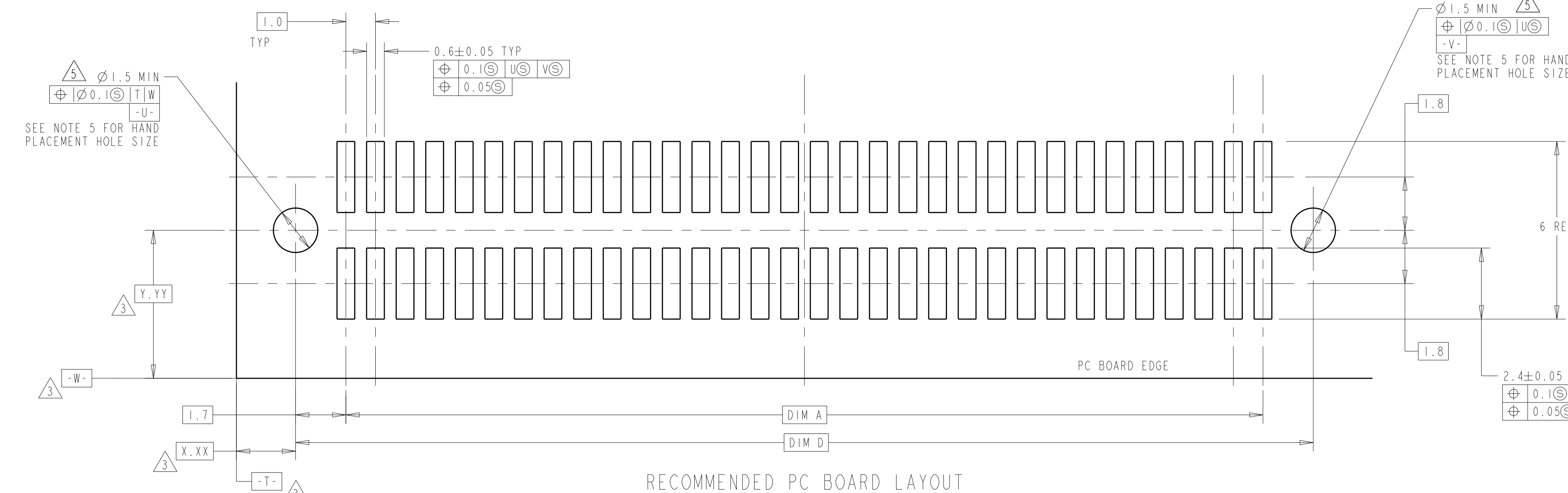
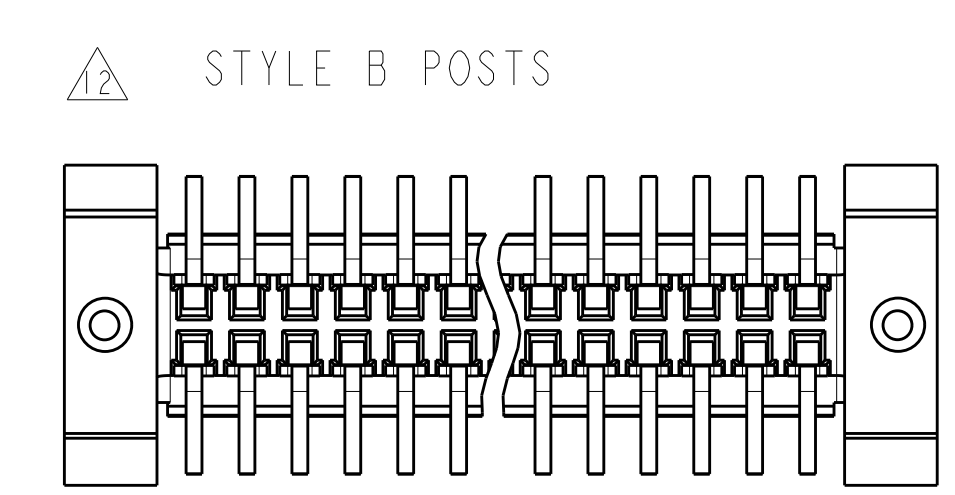
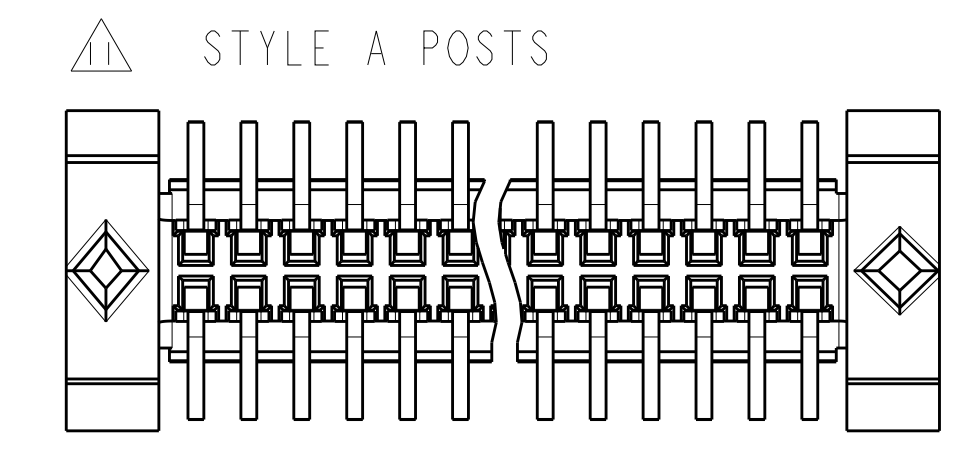
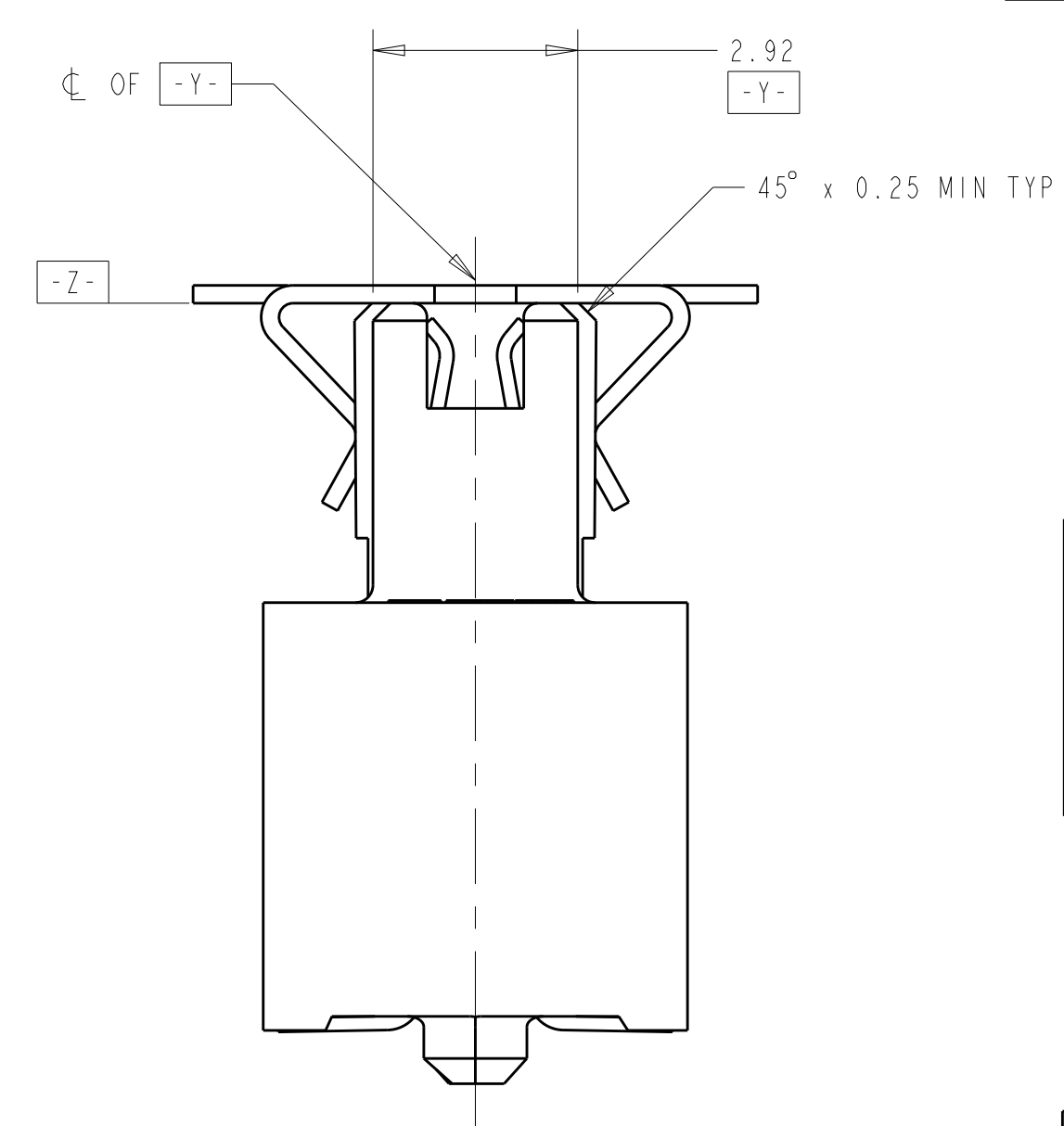
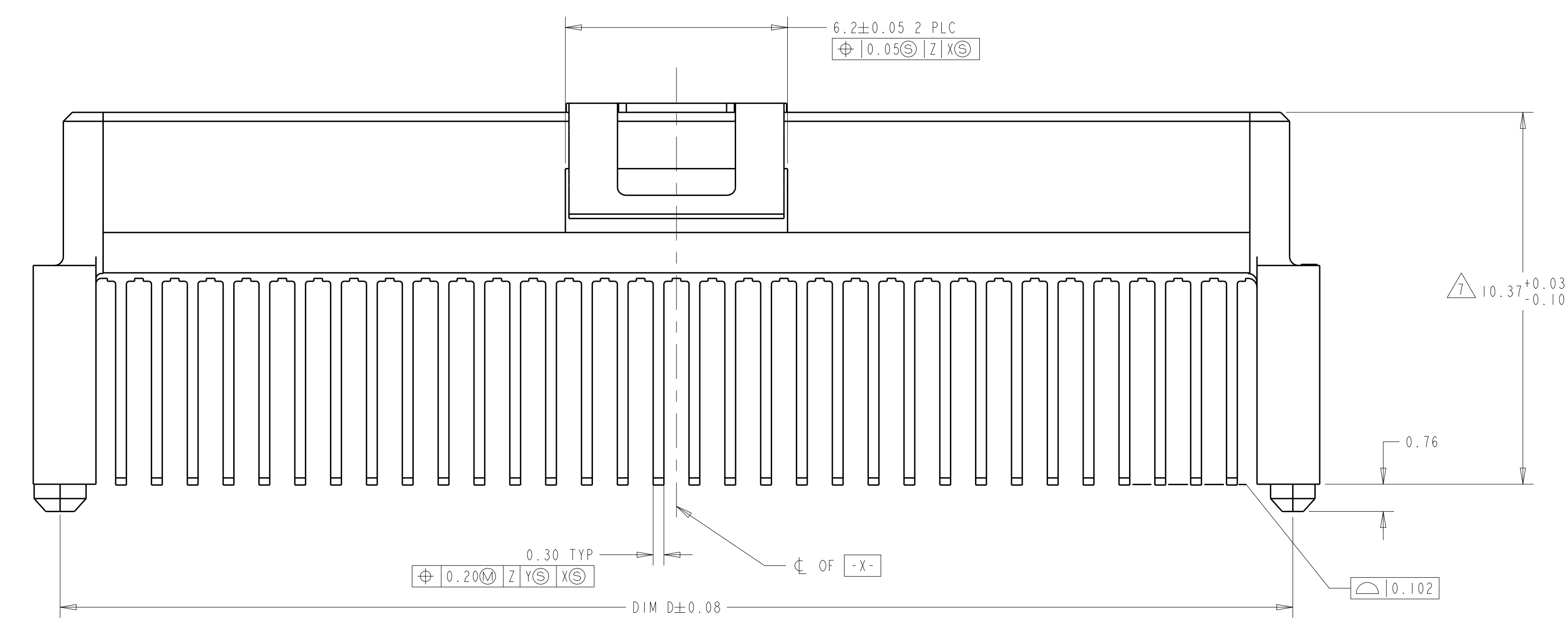


REVISIONS				
P.	LTN	DESCRIPTION	DATE	OWN APVD
M	REV PER ECR-14-016951		11FEB2015	J.T W.H



- HOUSING MATERIAL: HIGH TEMPERATURE THERMOPLASTIC, COLOR: BLACK. CONTACT MATERIAL: PHOSPHOR BRONZE.
- CONTACT FINISH: NICKEL UNDERPLATE ALL OVER, MATING SURFACES PLATED TO MEET PLI PERFORMANCE REQUIREMENTS OF INDUSTRY SPECIFICATION EIA-700AAAAB, SOLDER TAILS PLATED TIN-LEAD.
- DATUM LOCATIONS AND BASIC DIMENSIONS TO BE ESTABLISHED BY THE CUSTOMER. CONSULT AMP ENGINEERING WHEN PLACING MULTIPLE CONNECTORS ON A PC BOARD.
- PACKAGED IN TAPE ON REEL PER EIA-481.
- 1.4±0.05 DIAMETER HOLE WHEN PLACING BY HAND.
- SHORTER SOLDER LANDS MAY BE USED PER EIA 700AAAAB, HOWEVER 2.4 LENGTH ASSURES OPTIMUM SOLDER FILLET REGARDLESS OF MANUFACTURER OF CONNECTOR.
- REFERRED TO AS DIM H = 5.30±0.1 IN EIA 700AAAAB SPECIFICATION.
- VACUUM COVER NOT SHOWN IN SOME VIEWS FOR CLARITY.
- 5.5 MIN DIAMETER TARGET AREA FOR VACUUM PICK-UP.
- CONTACT FINISH: 0.002 MINIMUM BRIGHT TIN-LEAD (93-7) ON SOLDER AREA. 0.00127 MINIMUM GOLD ON MATING AREA. BOTH OVER 0.00127 MINIMUM NICKEL ON ENTIRE CONTACT.
- SQUARE AND DIAMOND SHAPED POSTS.
- ROUND SHAPED POSTS.



POST STYLE	FINISH	DIM D	DIM C	DIM B	DIM A	STACK HEIGHTS	POS	AMP PART NUMBER
12	10	44.4	45.9	44.22	41	14, 15	84	3-146896-2
12	10	34.4	35.9	34.22	31	14, 15	64	3-146896-1
12	2	44.4	45.9	44.22	41	14, 15	84	2-146896-2
12	2	34.4	35.9	34.22	31	14, 15	64	2-146896-1
11	10	44.4	45.9	44.22	41	14, 15	84	1-146896-2
11	10	34.4	35.9	34.22	31	14, 15	64	1-146896-1
11	2	44.4	45.9	44.22	41	14, 15	84	146896-2
11	2	34.4	35.9	34.22	31	14, 15	64	146896-1

THIS DRAWING IS A CONTROLLED DOCUMENT. DWN: D.K. SCHRUM, CHN: CHAD BAKER, APVD: CHAD BAKER

PRODUCT SPEC: 502-1079  
APPLICATION SPEC: 114-25045

RECEPTACLE ASSY, W/ VACUUM COVER, 1.0mm FH (IEEE 1386) CONNECTOR

SCALE: 10:1 SHEET 1 OF 1 REV M

单击下面可查看定价，库存，交付和生命周期等信息

[>>TE Connectivity\(泰科\)](#)