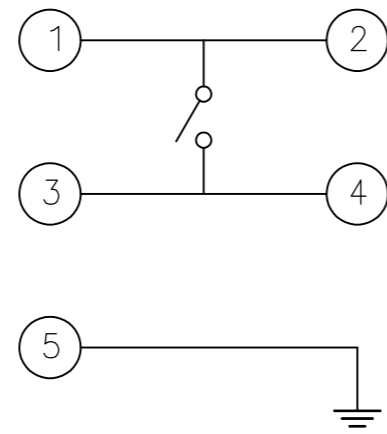
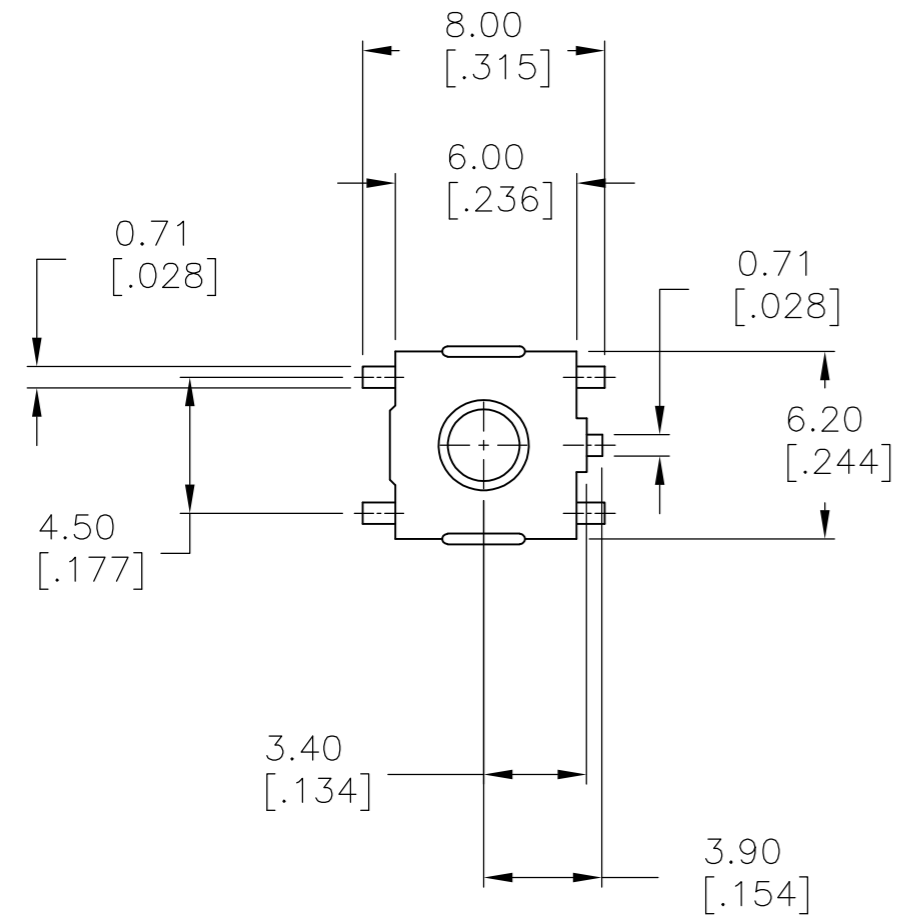
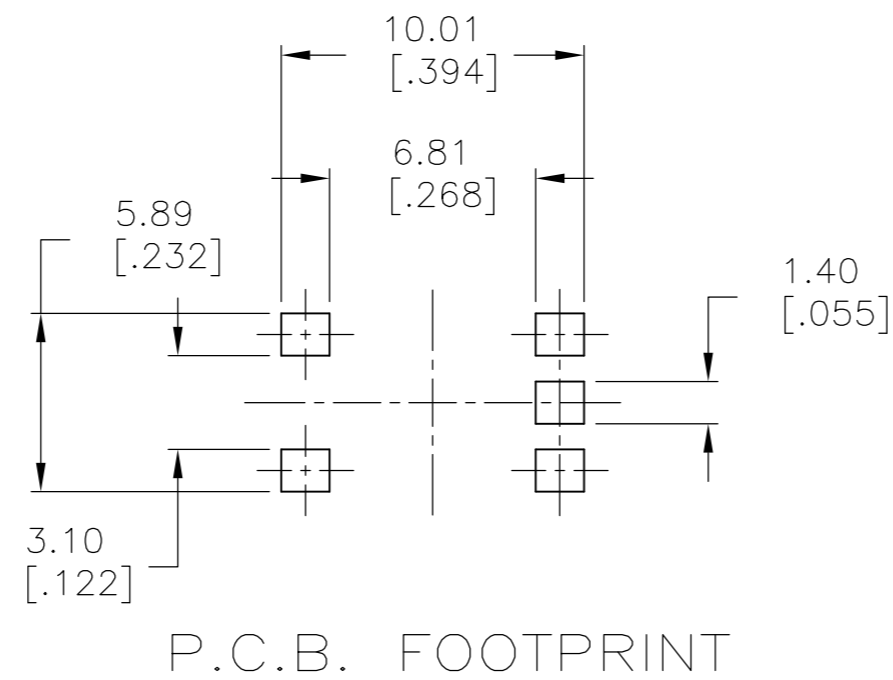
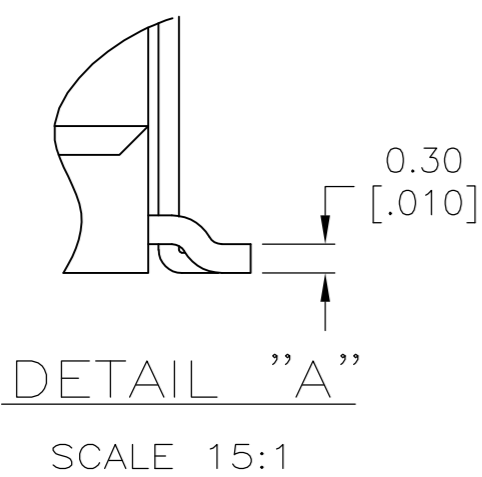
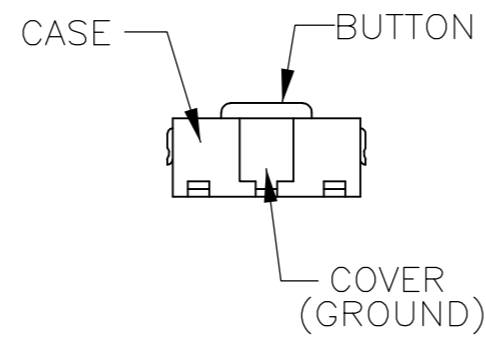
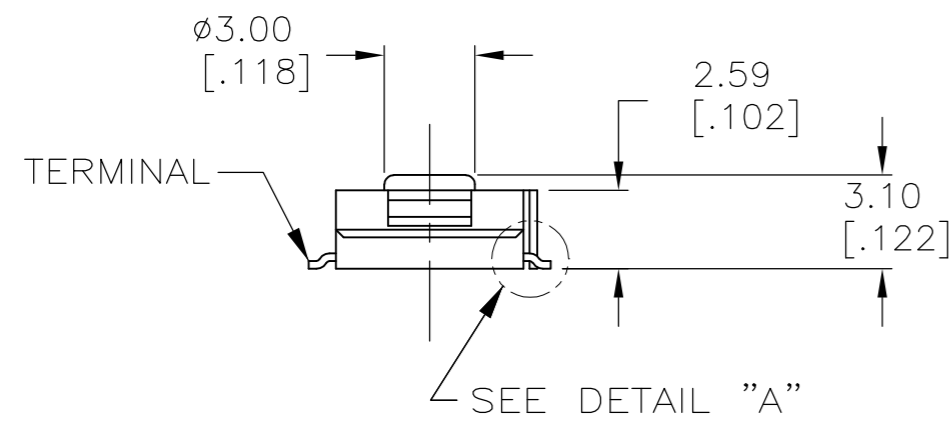


THIS DRAWING IS UNPUBLISHED. RELEASED FOR PUBLICATION  
 © COPYRIGHT - By - ALL RIGHTS RESERVED.

LOC		DIST		REVISIONS			
P	LTR	DESCRIPTION		DATE	DWN	APVD	
AD	00	A4	REVISED PER ECO-14-014370	23SEP2014	NK	RH	



CIRCUIT DIAGRAM



SPECIFICATIONS:

MATERIALS:

CASE, NYLON 46 UL94 V-0, IVORY  
 ACTUATOR, NYLON PA6T UL94V-0, SEE P/N TABLE FOR FINISH  
 COVER, COPPER ALLOY, TIN FINISH  
 TERMINAL/FIXED CONTACT, COPPER ALLOY-SILVER FINISH  
 MOVING CONTACT, STAINLESS STEEL-SILVER FINISH

ELECTRICAL:

MAX CONTACT RATING, 50MILLIAMPER@24V DC  
 MIN CONTACT RATING, 1MICROAMP@1V DC  
 CONTACT RESISTANCE, 100 MILLIOHMS MAX  
 INSULATION RESISTANCE, 100 MEGOHM MIN.  
 DIELECTRIC STRENGTH, 500 V AC FOR 1 MINUTE  
 LIFE EXPECTANCY, 1,000,000 CYCLES

MECHANICAL:

ACTUATION FORCE, SEE P/N TABLE  
 ACTUATION TRAVEL, 0.25 +0.20/-0.10  
 LIFE EXPECTANCY, 1,000,000, (2 CYCLES PER SECOND AND 150% ACTUATION FORCE)

ENVIRONMENTAL:

OPERATING TEMPERATURE, -40 TO +105° C  
 STORAGE TEMPERATURE, -40 TO +105° C  
 SOLDERABILITY, EIA-RS-186-9E, OR MIL-STD-202F  
 RESISTANCE TO SOLDER HEAT, 260° C FOR 10SEC-PER 109-201, CONDITION B  
 1. NO CHANGE IN INITIAL ELECTRICAL AND MECHANICAL CHARACTERISTICS

- ALL MATERIALS AND FINISHES SHALL COMPLY WITH EU DIRECTIVE 2002/95/EC OF 27JAN2003 (ROHS)
- TAPE AND REEL PACKAGING PER EIA-481

1,000,000	PINK	260 +/-50g	12 MM	16 MM	FSM1LPASTR	1977263-4
1,000,000	PINK	260 +/-50g			FSM1LPAS	1977263-3
1,000,000	GREEN	160 +/-50g	12 MM	16 MM	FSM1LPSTR	1977263-2
1,000,000	GREEN	160 +/-50g			FSM1LPS	1977263-1
LIFE CYCLE	ACTUATOR COLOR	ACTUATION FORCE	PITCH	TAPE WIDTH	T&B P/N	TE P/N

THIS DRAWING IS A CONTROLLED DOCUMENT.		DWN	M.BINNER	24JAN08		
DIMENSIONS: mm [INCHES]		CHK	M.SARVER	24JAN08		
TOLERANCES UNLESS OTHERWISE SPECIFIED:		APVD	M.SARVER	24JAN08		
0 PLC ± - 1 PLC ± - 2 PLC ± 0.30[.012] 3 PLC ± - 4 PLC ± - ANGLES ± -		PRODUCT SPEC	NAME			
MATERIAL		FINISH		WEIGHT	-	
-		-		SCALE	A2 00779 C=1977263	
CUSTOMER DRAWING				SCALE	4:1	SHEET 1 OF 2
				REV	A4	

4

3

2

1

THIS DRAWING IS UNPUBLISHED. RELEASED FOR PUBLICATION  
 © COPYRIGHT - By - ALL RIGHTS RESERVED.

LOC	DIST	REVISIONS			
P	LTR	DESCRIPTION	DATE	DWN	APVD
AD	00	SEE SHEET 1	-	-	-

Technical drawing showing the carrier tape and cover tape with dimensions:  $\phi 1.5^{+0.1}$ ,  $2.0 \pm 0.1$ ,  $4.0 \pm 0.1$ ,  $2.0 \pm 0.1$ ,  $1.75 \pm 0.1$ ,  $13.3$ ,  $16.0 \pm 0.1$ ,  $7.5 \pm 0.1$ ,  $0.4$ ,  $3.6$ , and  $12.0 \pm 0.1$ . Labels include CARRIER TAPE and COVER TAPE.

Technical drawing showing the carrier tape and cover tape with a drawing direction arrow pointing right. Labels include CARRIER TAPE and COVER TAPE.

Technical drawing of a reel with dimensions:  $330.0$ ,  $16.4^{+0.1}$ ,  $2.5 \pm 0.15$ , and  $\phi 100.0$ . Labels include LABEL and REEL.

Technical drawing of a reel with a drawing direction arrow pointing right. Labels include LABEL, REEL, COVER TAPE, and CARRIER TAPE. Text below reads: -THE DIRECTION OF PILOT HOLES-

-THE DIMENSION OF CARRIER TAPE, COVER TAPE AND REEL-

Technical drawing showing the carrier tape, cover tape, and reel with end tape. Labels include CARRIER TAPE, COVER TAPE, REEL, and END TAPE.

Technical drawing showing the carrier tape and cover tape with sections: TRAILER, PACKED PORTION, LEADER, and START. Labels include CARRIER TAPE, COVER TAPE, and REEL. Dimensions include  $300-360\text{mm}$ ,  $30.0\text{max}$ , and  $5.0\text{max}$ .

Technical drawing of end tape with dimensions:  $30.0\text{max}$ ,  $5.0\text{max}$ , and  $8.0 - 10.0$ .

Technical drawing of end tape with dimension  $0.5$ . Label: -END TAPE-

THIS DRAWING IS A CONTROLLED DOCUMENT.		DWN	M.BINNER	24JAN08		TE Connectivity					
DIMENSIONS: mm [INCHES]		CHK	M.SARVER	24JAN08		TACTILE SWITCH FSM1LP					
TOLERANCES UNLESS OTHERWISE SPECIFIED:		APVD	M.SARVER	24JAN08		SIZE	CAGE CODE	DRAWING NO			
0 PLC ± - 1 PLC ± - 2 PLC ± 0.30[.012] 3 PLC ± - 4 PLC ± - ANGLES ± - FINISH ± -		PRODUCT SPEC	APPLICATION SPEC	WEIGHT		A2	00779	C=1977263			
MATERIAL	-	FINISH	-	-	CUSTOMER DRAWING	SCALE	4:1	SHEET	2 of 2	REV	A4

1471-9 (3/11) Downloaded From [Onevac.com](http://Onevac.com)

1977263

单击下面可查看定价，库存，交付和生命周期等信息

[>>TE Connectivity\(泰科\)](#)