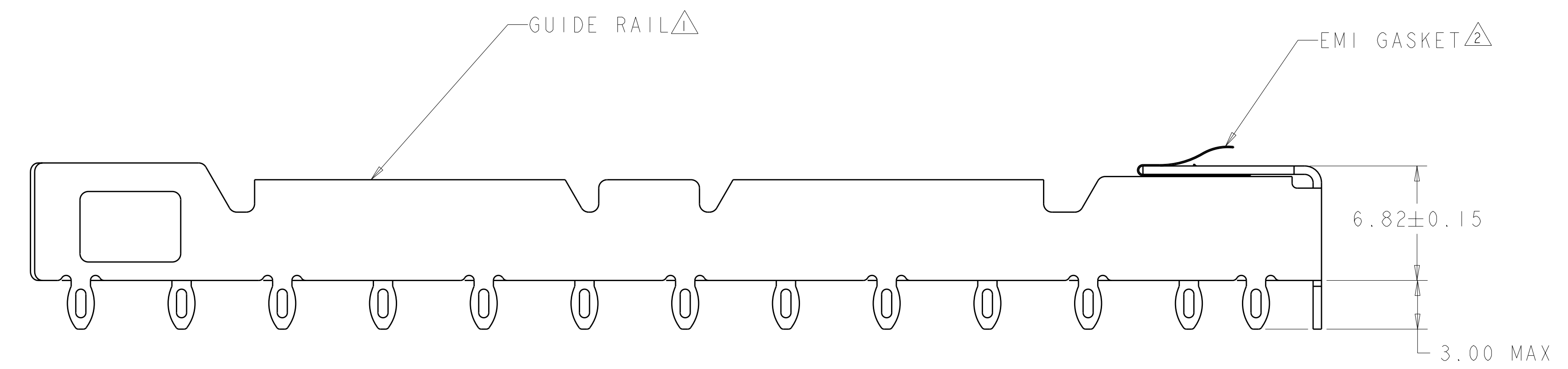
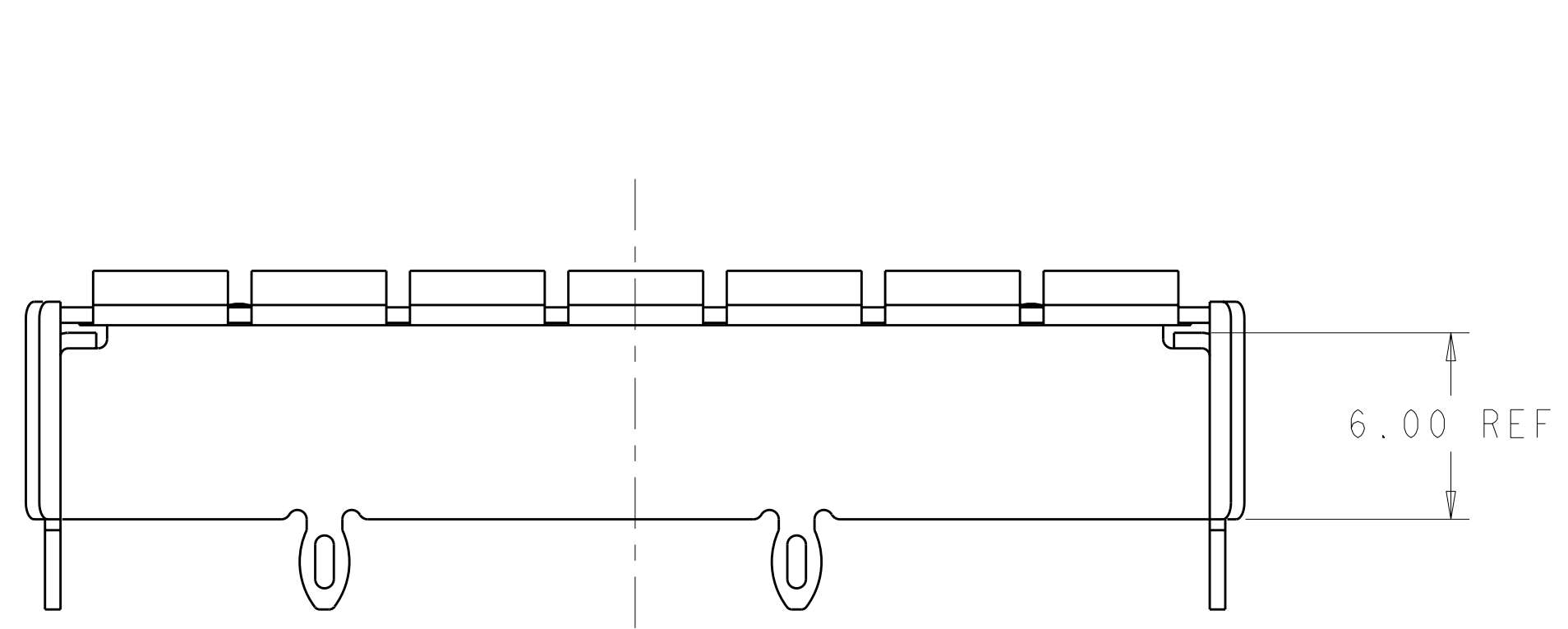
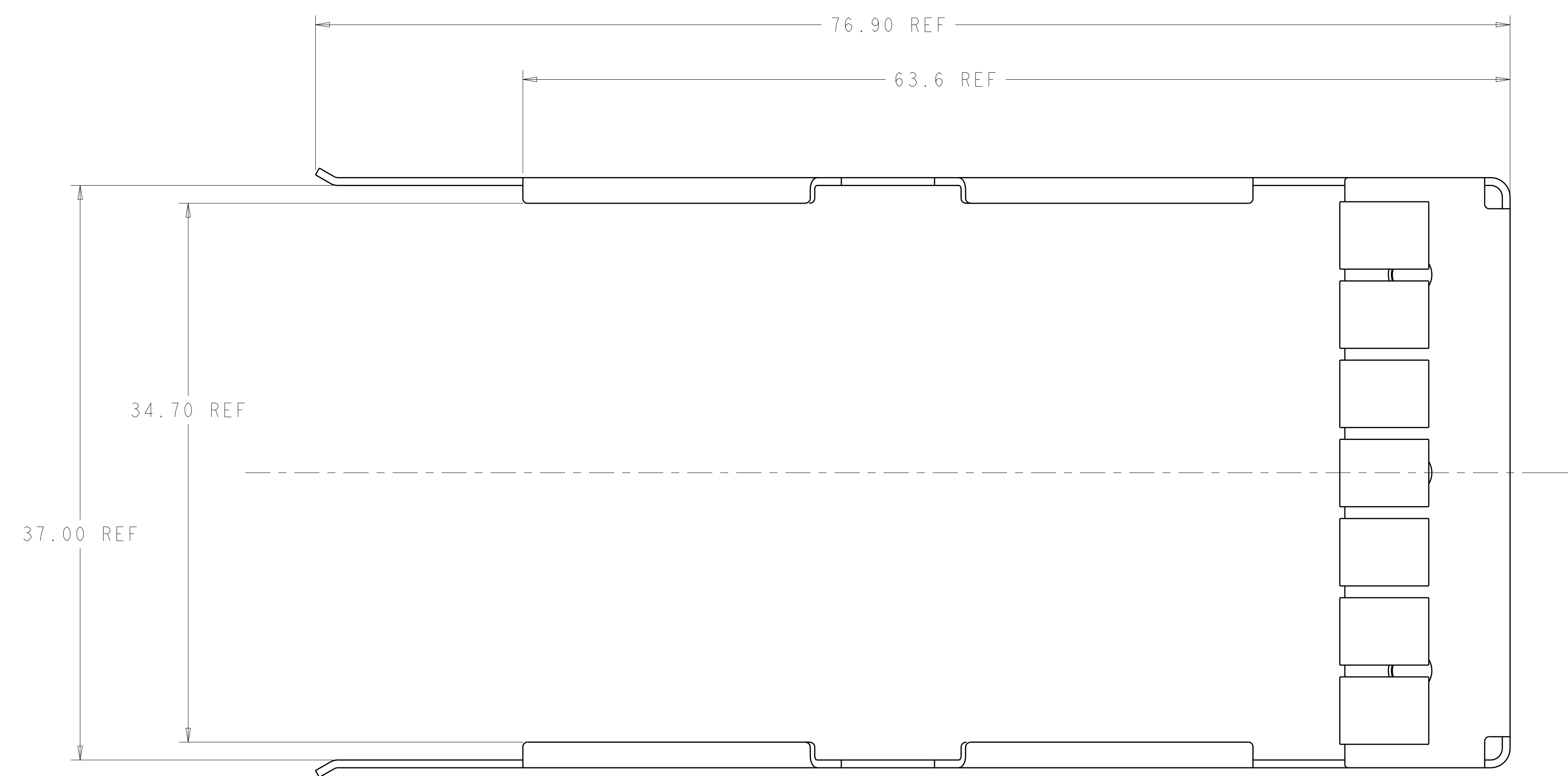


LOC	DIST	REV	DATE	BY	CHK	APPV
AG	00					

REV	DATE	DESCRIPTION	DATE	BY	CHK	APPV
5	11JUL2006	Ø 1.55±0.02 WAS Ø 1.45 ±0.02				
A	11APR07	RELEASED PER ECO-07-007698				

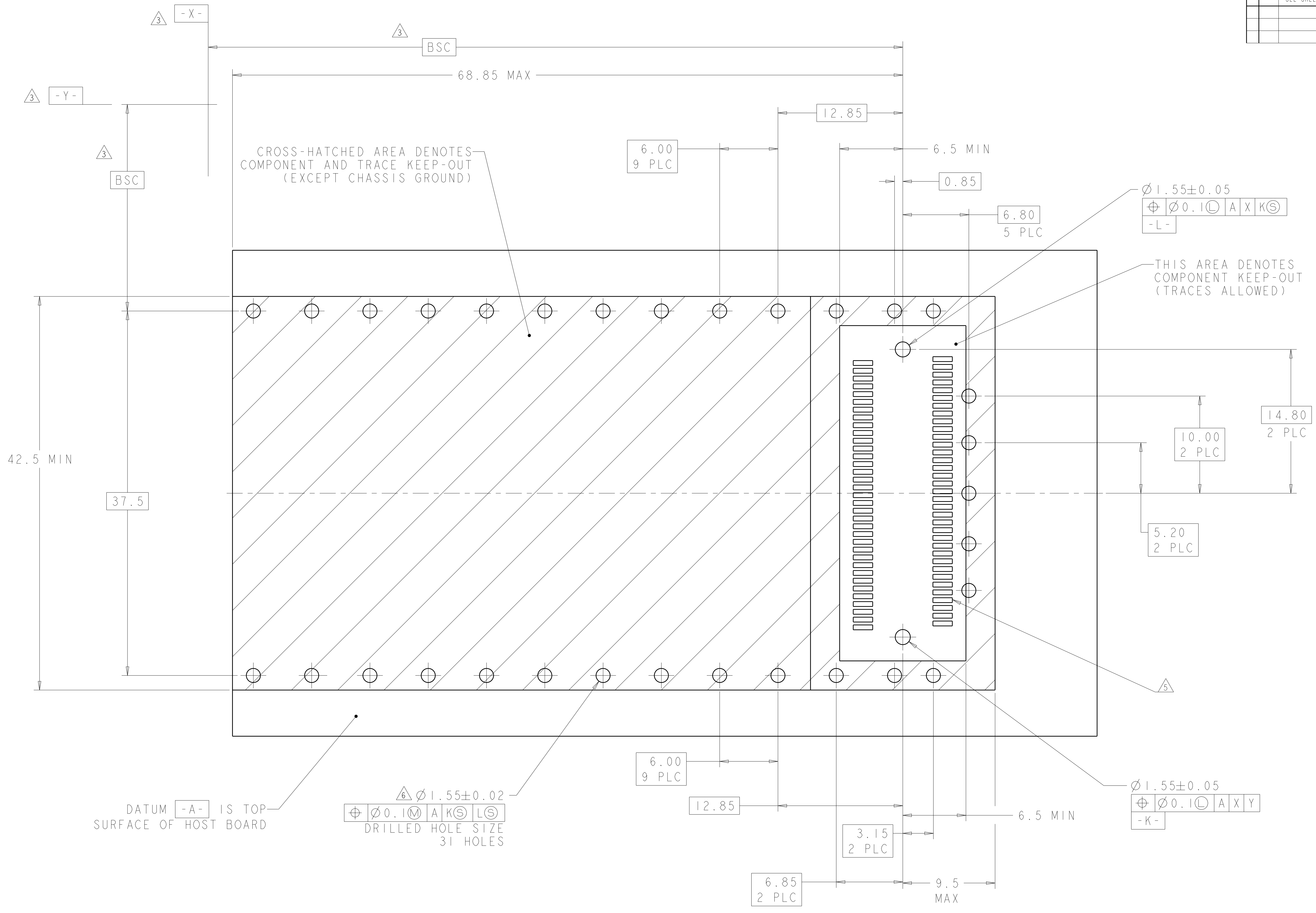
- △ GUIDE RAIL MATERIAL: COPPER ALLOY
 GUIDE RAIL FINISH: 0.4 MICROMETERS MIN THK TIN COATING
- △ EMI GASKET MATERIAL: COPPER ALLOY
 EMI GASKET PLATING: 2 MICROMETERS MIN THK TIN PLATE
- △ DATUMS X AND Y AND BSC DIMENSIONS TO BE ESTABLISHED BY CUSTOMER
- 4. DESIGN ACCEPTS MODULES THAT ARE COMPLIANT WITH X2 SPECIFICATION REV 2.0b
- △ SEE CUSTOMER DRAWING 1367337-1 FOR CONNECTOR PAD DIMENSIONS
- △ RECOMMENDATION FOR P.C. BOARD HOLES:
 COPPER UNDERPLATE, 25-50 MICROMETERS THICK, FOLLOWED BY ANY OF THESE SURFACE FINISHES:
 - A. HASL SnPb: 35 MICROMETERS MAX THK
 - B. GALVANIC Au: 4-5 MICROMETERS Ni + 0.1-0.5 MICROMETERS Au
 - C. OSP: 0.2-0.5 MICROMETERS THK
 - D. IMMERSION Sn: 0.5 MICROMETERS MIN THK
 - E. IMMERSION Au: 4-5 MICROMETERS Ni + 0.1-0.5 MICROMETERS Au
 - F. IMMERSION Ag: 0.1-0.3 MICROMETERS
- 7. BARE EDGES PERMITTED
- 8. 3.0 MIN PRINTED CIRCUIT BOARD THICKNESS FOR BELLY TO BELLY APPLICATION
- 9. BEZEL REQUIREMENTS PER X2 MSA
- 10. REFERENCE INSTRUCTION SHEET 408-8997 FOR ADDITIONAL INSTRUCTIONS.



1367608-1
 PART NUMBER

DIMENSIONS: mm 		TOLERANCES UNLESS OTHERWISE SPECIFIED: 9 PLC ±0.5 1 PLC ±0.2 5 PLC ±0.1 4 PLC ± ANGLES ±		DWN P. KERLIN 04MAR2004 CHK E. BRIGHT 04MAR2004 APVD - NAME PRODUCT SPEC APPLICATION SPEC WEIGHT CUSTOMER DRAWING		Tyco Electronics Harrisburg, PA 17105-3608 RAIL ASSY, GUIDE, X2 BELLY TO BELLY SIZE CAGE CODE DRAWING NO A 00779 C=1367608 SCALE 5:1 SHEET 1 OF 3 REV A	
-----------------------	--	---	--	--	--	--	--

LOC	DIST	REV	DATE	BY	APPD
AG	00	1			
DESCRIPTION			DATE	BY	APPD
SEE SHEET 1					



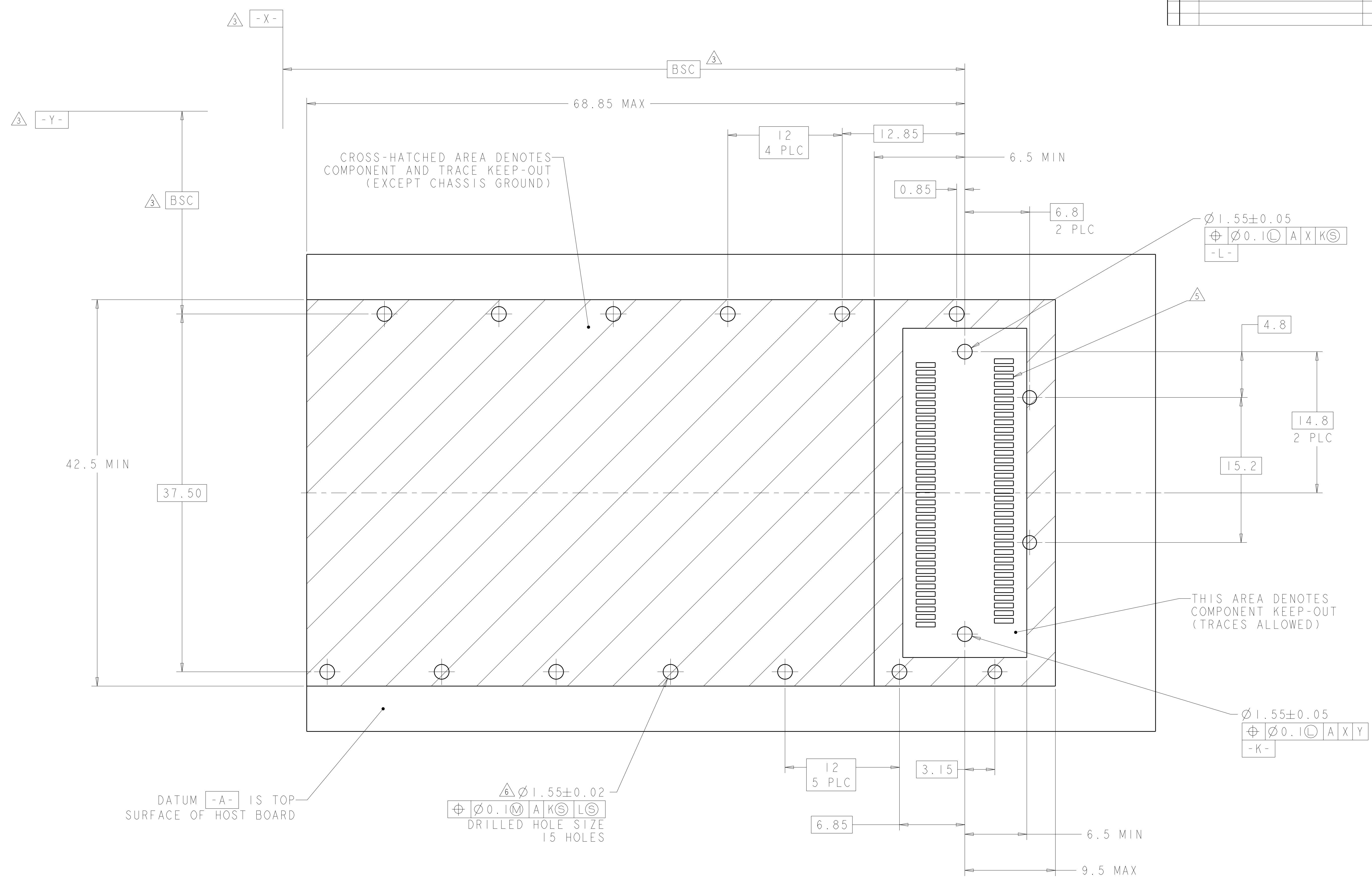
RECOMMENDED P.C. BOARD LAYOUT FOR BELLY TO BELLY X2

DIMENSIONS:		TOLERANCES UNLESS OTHERWISE SPECIFIED:		MATERIAL:		FINISH:		WEIGHT:		CUSTOMER DRAWING:	
mm	9 PLC	±0.5	9 PLC	-	-	-	-	-	-	-	-
	1 PLC	±0.2	1 PLC	-	-	-	-	-	-	-	-
	2 PLC	±0.1	2 PLC	-	-	-	-	-	-	-	-
	3 PLC	±	3 PLC	-	-	-	-	-	-	-	-
	4 PLC	±	4 PLC	-	-	-	-	-	-	-	-
	5 PLC	±0.1	5 PLC	-	-	-	-	-	-	-	-
	ANGLES	±	ANGLES	-	-	-	-	-	-	-	-

DWN	P. KERLIN	04MAR2004		Tyco Electronics Harrisburg, PA 17105-3608
CHK	E. BRIGHT	04MAR2004		
APVD	-	-	NAME	RAIL ASSY, GUIDE, X2 BELLY TO BELLY
PRODUCT SPEC			SIZE	A
APPLICATION SPEC			CAGE CODE	00779
MATERIAL			DRAWING NO	C=1367608
FINISH			RESTRICTED TO	-
CUSTOMER DRAWING			SCALE	5:1
			SHEET	2 OF 3
			REV	A

LOC	DIST	REV	DATE	BY	APPD
AG	00				

REVISIONS		DATE	BY	APPD
1	SEE SHEET 1			



DATUM **-A-** IS TOP SURFACE OF HOST BOARD

$\phi 1.55 \pm 0.02$
 $\phi 0.1$ M A K S L S
 DRILLED HOLE SIZE
 15 HOLES

RECOMMENDED P.C. BOARD LAYOUT FOR SINGLE SIDE MOUNTED X2

<small>THIS DRAWING IS UNPUBLISHED. RELEASED FOR PUBLICATION BY TYCO ELECTRONICS CORPORATION. ALL RIGHTS RESERVED.</small>		DWN P. KERLIN 04MAR2004 CHK E. BRIGHT 04MAR2004 APVD -	tyco Electronics Tyco Electronics Harrisburg, PA 17105-3608
DIMENSIONS: mm 	TOLERANCES UNLESS OTHERWISE SPECIFIED: 9 PLC ± 0.5 1 PLC ± 0.2 5 PLC ± 0.1 4 PLC \pm ANGLES \pm FINISH -	PRODUCT SPEC - APPLICATION SPEC - WEIGHT - CUSTOMER DRAWING	NAME RAIL ASSY, GUIDE, X2 BELLY TO BELLY SIZE CAGE CODE DRAWING NO RESTRICTED TO A 00779 C-1367608 -
SCALE 5:1 SHEET 3 OF 3 REV A			

单击下面可查看定价，库存，交付和生命周期等信息

[>>TE Connectivity\(泰科\)](#)