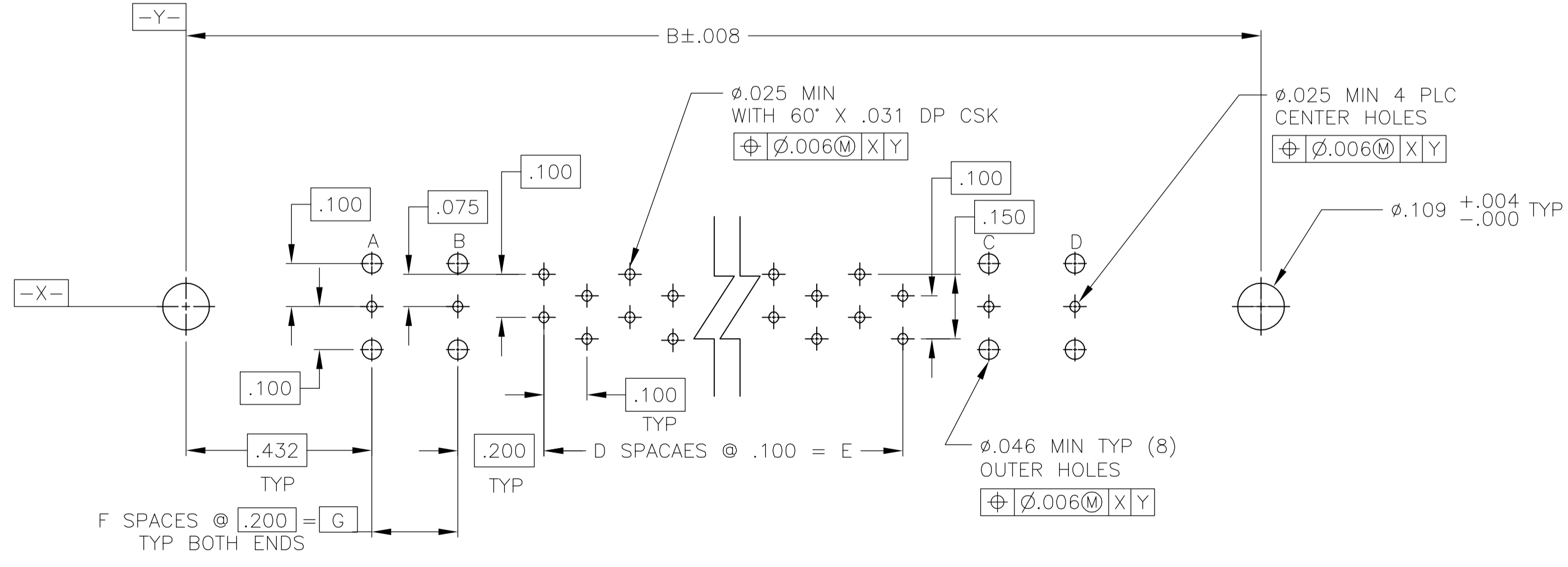
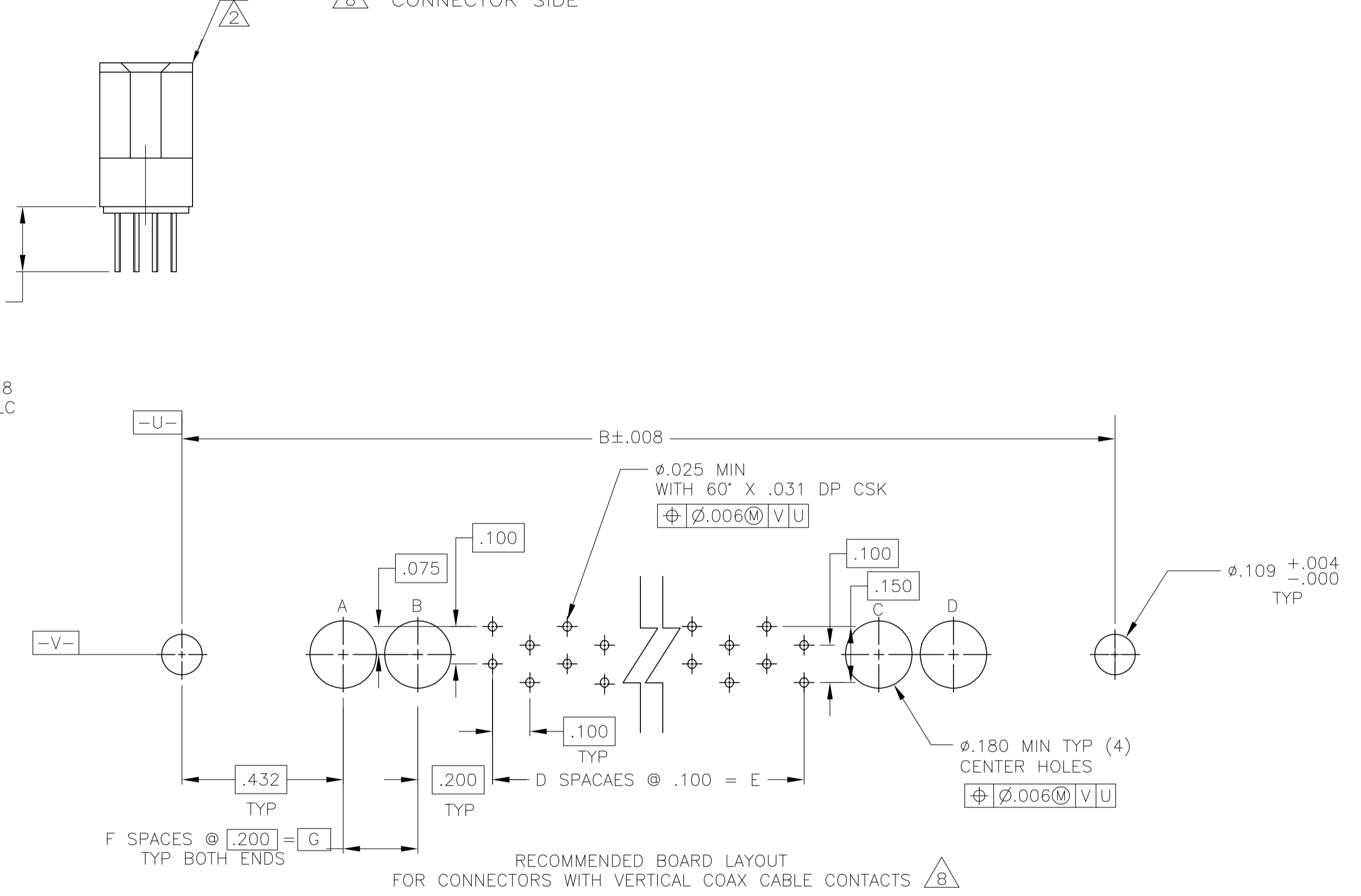
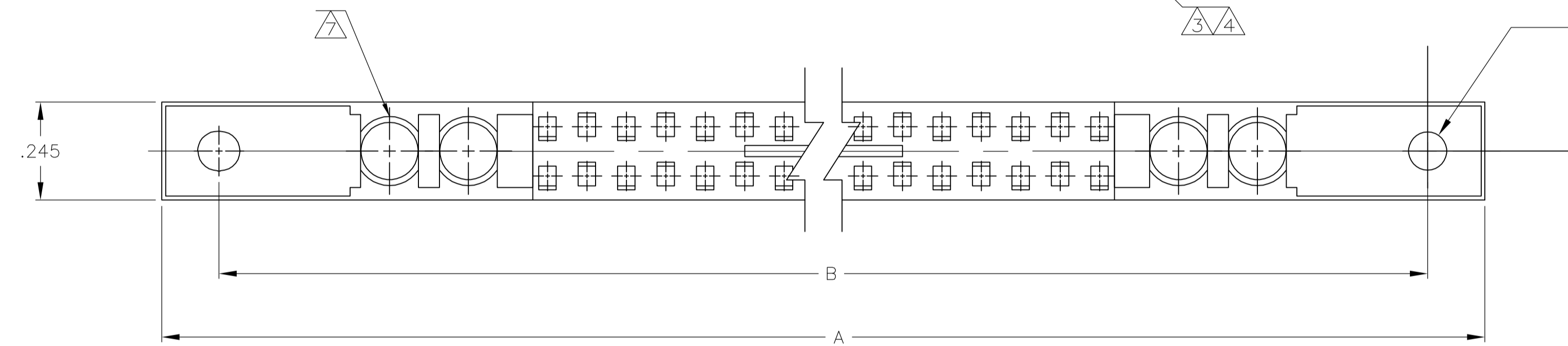
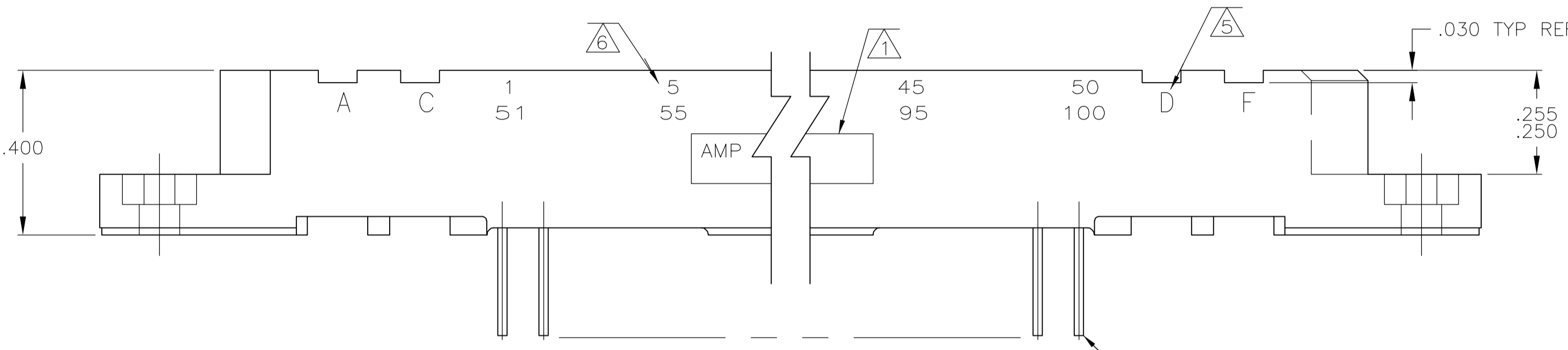


- 1 "AMP" PART NO & DATE CODE MARKED WITHIN THIS AREA.
- 2 HOUSING MATERIAL: DIALLYL PHTHALATE, COLOR: BLUE.
- 3 CONTACT FINISH: .000050 GOLD IN CONTACT ENGAGEMENT AREA, .000100 MIN. TIN-LEAD ON CONTACT TAIL OVER .000030 MIN. NICKEL ON ENTIRE CONTACT.
- 4 CONTACT MATERIAL: BERYLLIUM COPPER (BeCu) OR COPPER NICKEL SILICONE (CuNiSi)
- 5 COAX POSITIONS (A,B,C,D,E,F) MARKED THIS SIDE ONLY.
- 6 NUMBERS INDICATING EVERY FIFTH CAVITY MARKED THIS SIDE.
- 7 WILL ACCEPT MICROMINIATURE COAX CONTACT: SEE AMP DATA SHEET 80-600. INSERT COAX CONTACT FROM THIS SIDE BEFORE MOUNTING TO P.C.BOARD
- 8 CONNECTOR SIDE



OBsolete	1	57	.400	2	5.500	55	7.165	7.565	7.855	6	112	1-533639-0
OBsolete	1	52	.400	2	5.000	50	6.665	7.065	7.355	6	102	533639-9
OBsolete	1	47	.400	2	4.500	45	6.165	6.565	6.855	6	92	533639-8
OBsolete	1	42	.400	2	4.000	40	5.665	6.065	6.355	6	82	533639-7
OBsolete	1	37	.400	2	3.500	35	5.165	5.565	5.855	6	72	533639-6
	1	32	.400	2	3.000	30	4.665	5.065	5.355	6	62	533639-5
OBsolete	1	27	.400	2	2.500	25	4.165	4.565	4.855	6	52	533639-4
OBsolete	1	22	.400	2	2.000	20	3.665	4.065	4.355	6	42	533639-3
OBsolete	1	17	.400	2	1.500	15	3.165	3.565	3.855	6	32	533639-2
	1	12	.400	2	1.000	10	2.665	2.065	3.355	6	22	533639-1
	1	11	.400	2	1.000	10	2.665	2.065	3.355	6	22	533639-1
CAVITY IDENT	G	F	E	D	C	B	A	NO OF COAX POS		NO OF BOX POS		ASSEMBLY NUMBER

RECOMMENDED BOARD LAYOUT FOR CONNECTORS WITH VERTICAL COAX PC BOARD CONTACTS

RECOMMENDED BOARD LAYOUT FOR CONNECTORS WITH VERTICAL COAX CABLE CONTACTS

THIS DRAWING IS A CONTROLLED DOCUMENT.

APPROVED: T. KRAYBILL, 08FEB06
 CHK: C. THOMAS, 12FEB06
 NAME: C. THOMAS, 12FEB06

TYCO Electronics
 Tyco Electronics Corporation
 Harrisburg, PA 17105-3608

RECEPTACLE ASSEMBLY, 1000 SERIES BOX, WITH 6COAX CAVITIES, EXTERNAL KEYING, AND FLOW SOLDER CONTACTS

SIZE: A1, CASE CODE: 00779, DRAWING NO: 533639, RESTRICTED TO: —

WEIGHT: —, SCALE: 4:1, SHEET: 1 of 1, REV: E

单击下面可查看定价，库存，交付和生命周期等信息

[>>TE Connectivity\(泰科\)](#)