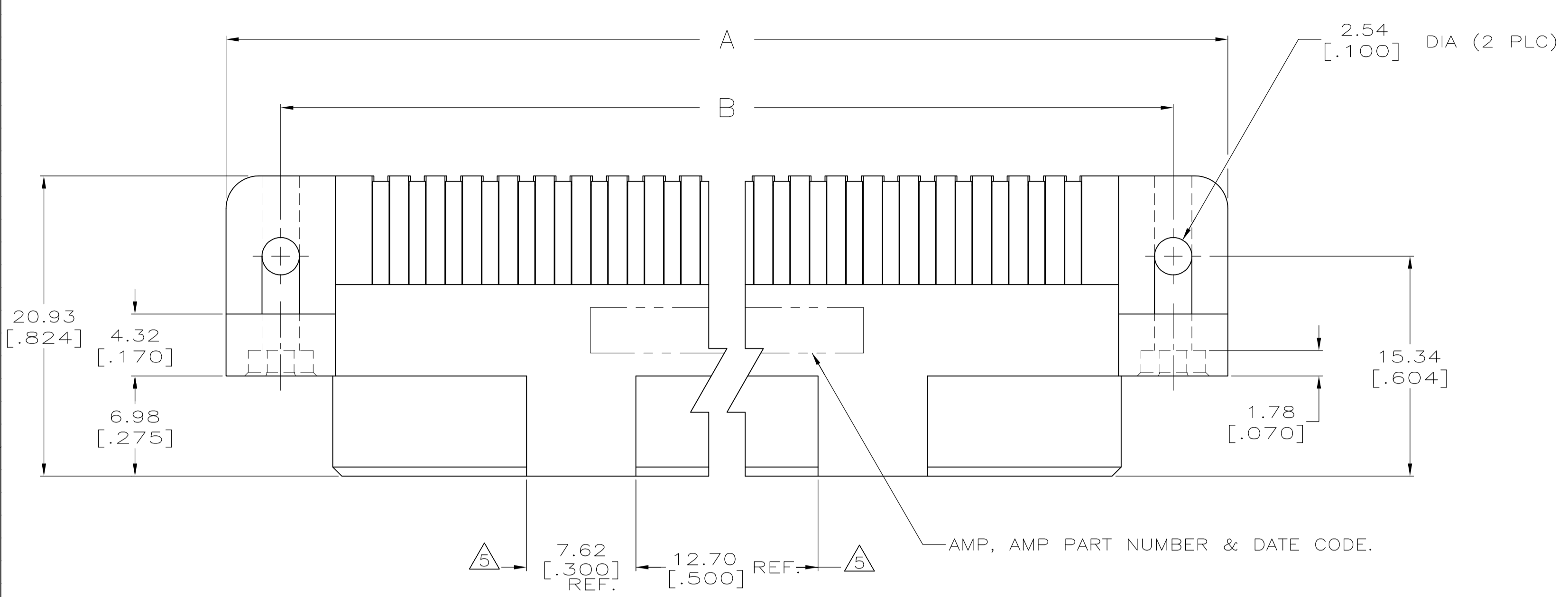
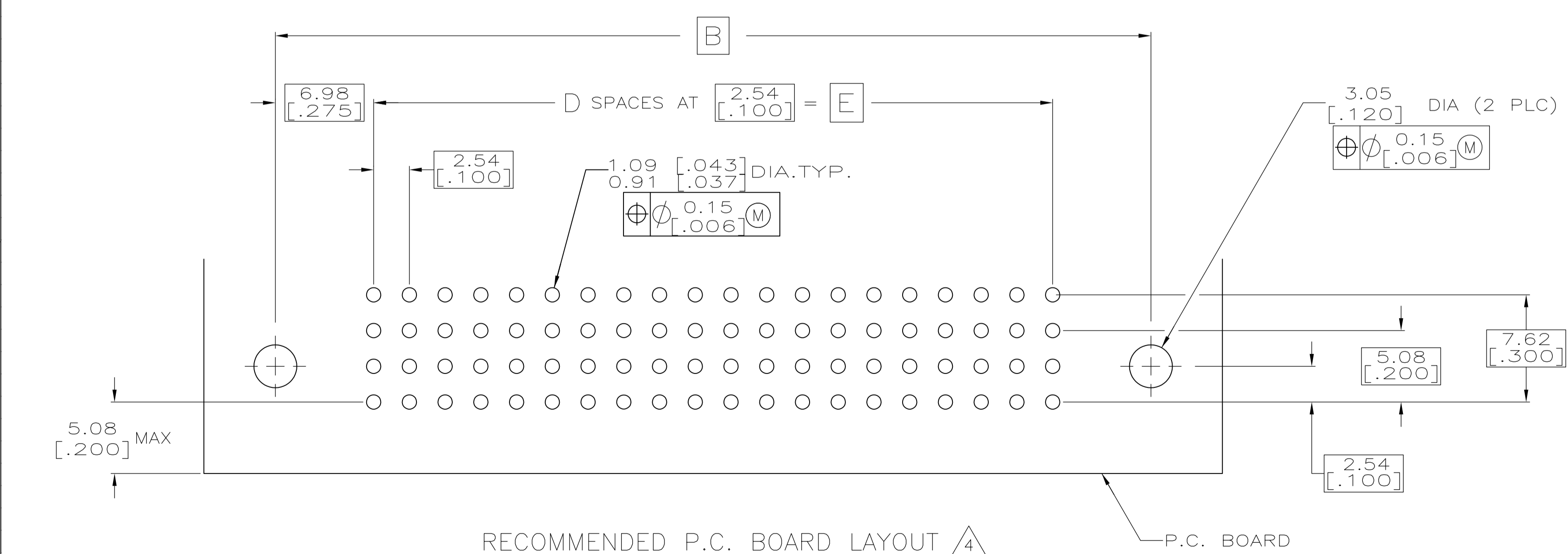
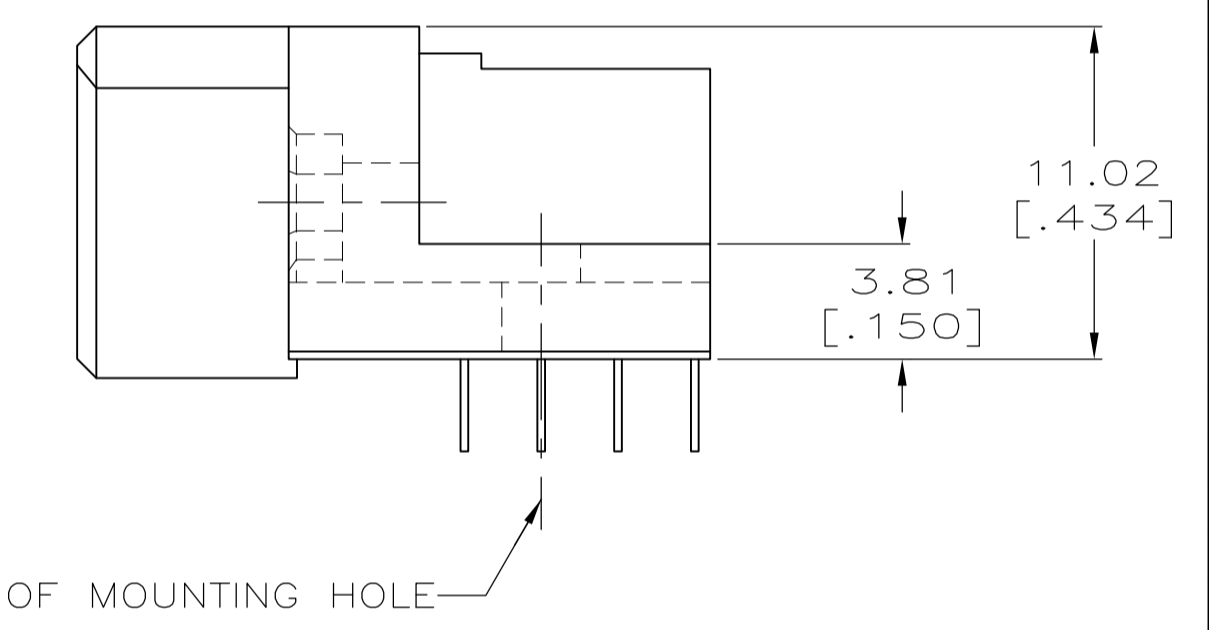
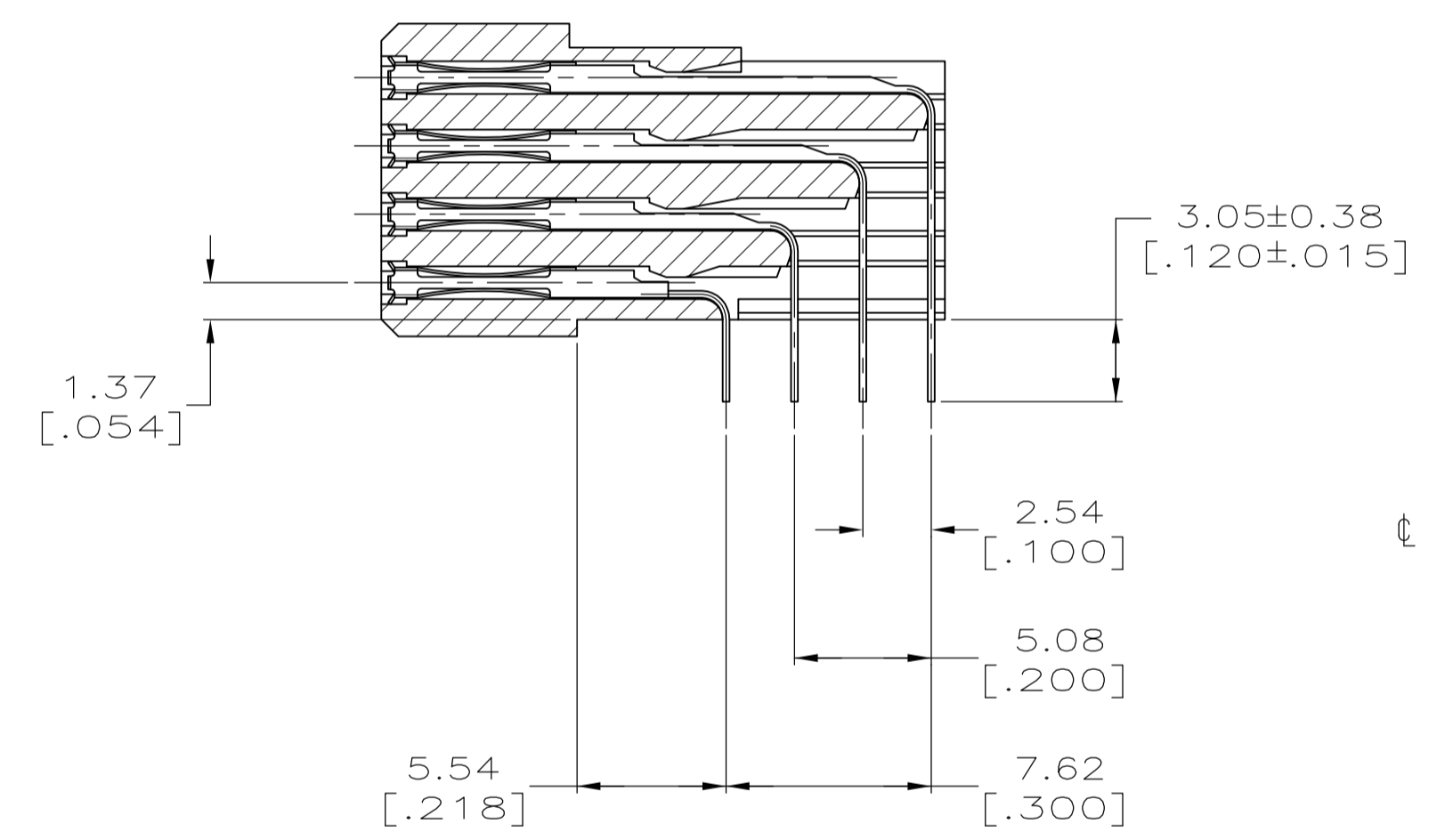
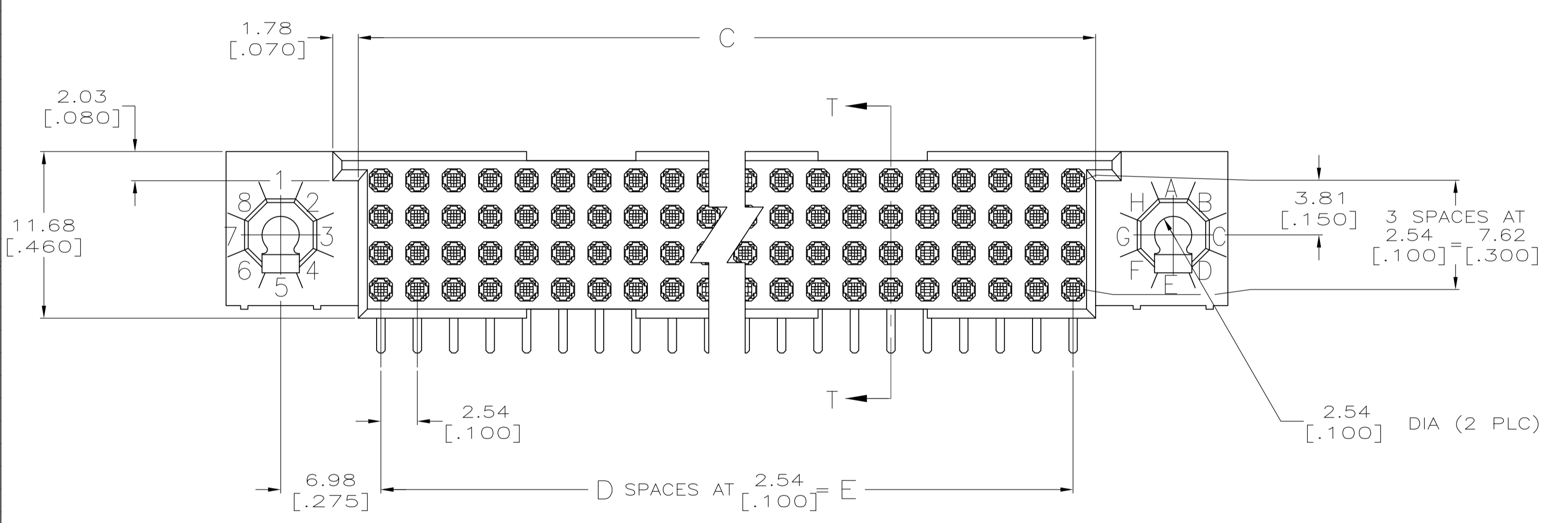


| REVISIONS | | | | | |
|-----------|-----|---------------------------|---------|-----|------|
| P | LTR | DESCRIPTION | DATE | DMN | APVO |
| A | | REVISED PER ECO-15-015252 | 16NOV15 | BJ | FY |



- ① HOUSING MATERIAL: THERMOPLASTIC.
- ② CONTACT MATERIAL: COPPER ALLOY.
- ③ FINISH:
MATING AREA: MEETS THE PERFORMANCE REQUIREMENTS OF PRODUCT SPECIFICATION 108-9063; BASED ON TELCORDIA DR-1217-CORE APPLICATIONS IN UNCONTROLLED ENVIRONMENTS.
TIN PLATED SOLDER TAILS.
- ④ SOLDER TAILS MUST FIT HOLE PATTERN AS SHOWN ON THE RECOMMENDED P.C. BOARD LAYOUT.
- ⑤ QUANTITIES OF VOID CORING ARE DEPENDENT ON THE POSITION SIZE OF THE HOUSING.
- ⑥ HOUSINGS WITH CENTER MOUNTING ARE RECOMMENDED FOR ASSEMBLIES HAVING 75 CONTACTS OR MORE PER ROW..
- ⑦ OBSOLETE PARTS: OBSOLETE CIS STREAMLINING PER D.RENAUD/D.SINISI



| SECTION T-T | 73.66 [2.900] | 29 | 76.81 [3.024] | 87.63 [3.450] | 95.25 [3.750] | 120 | 1-5532903-2 |
|--------------|-------------------|----|-------------------|-------------------|-------------------|------|---------------|
| ⑦ OBSOLETE | 175.26 [6.900] | 69 | 178.41 [7.024] | 189.23 [7.450] | 196.85 [7.750] | 280 | -1-5532903-1- |
| | 137.16 [5.400] | 54 | 140.31 [5.524] | 151.13 [5.950] | 158.75 [6.250] | 220 | 5532903-8 |
| | 124.46 [4.900] | 49 | 127.61 [5.024] | 138.43 [5.450] | 146.05 [5.750] | 200 | 5532903-7 |
| | 111.76 [4.400] | 44 | 114.91 [4.524] | 125.73 [4.950] | 133.35 [5.250] | 180 | 5532903-6 |
| | 99.06 [3.900] | 39 | 102.21 [4.024] | 113.03 [4.450] | 120.65 [4.750] | 160 | 5532903-5 |
| | 86.36 [3.400] | 34 | 89.51 [3.524] | 100.33 [3.950] | 107.95 [4.250] | 140 | 5532903-4 |
| | 78.74 [3.100] | 31 | 81.89 [3.224] | 92.71 [3.650] | 100.33 [3.950] | 128 | 5532903-3 |
| | 60.96 [2.400] | 24 | 64.11 [2.524] | 74.93 [2.950] | 82.55 [3.250] | 100 | 5532903-2 |
| ⑥ ⑦ OBSOLETE | 187.96 [7.400] | 74 | 191.11 [7.524] | 201.93 [7.950] | 209.55 [8.250] | 300 | -5532903-1- |
| | E | D | C | B | A | POSN | PART NUMBER |

THIS DRAWING IS A CONTROLLED DOCUMENT.

| | | | | |
|-------------------------|--|--------------------------|------------------------|--|
| DIMENSIONS: mm [INCHES] | TOLERANCES UNLESS OTHERWISE SPECIFIED: | DIN J. POLIGNONE 10JUN05 | APVO A. SHARPE 10JUN05 | NAME ASSEMBLY, RECEPTACLE, RIGHT ANGLE, HDI, LEAD-FREE, 4 ROW, WITHOUT GUIDES, 3.05[.120] SOLDER POSTS |
| 0 PLC ± - | 1 PLC ± - | 2 PLC ± 0.13[.005] | 3 PLC ± - | APPLICATION SPEC |
| 4 PLC ± - | ANGLES ± - | | | SIZE A1 |
| MATERIAL | FINISH | WEIGHT | CAGE CODE | DRAWING NO |
| | | | A1 | 00779 |
| | | | SCALE | SHEET |
| | | | 4:1 | 1 of 1 |
| | | | | REV |
| | | | | A |

CUSTOMER DRAWING

单击下面可查看定价，库存，交付和生命周期等信息

[>>TE Connectivity\(泰科\)](#)