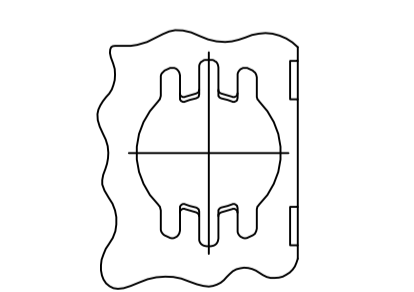
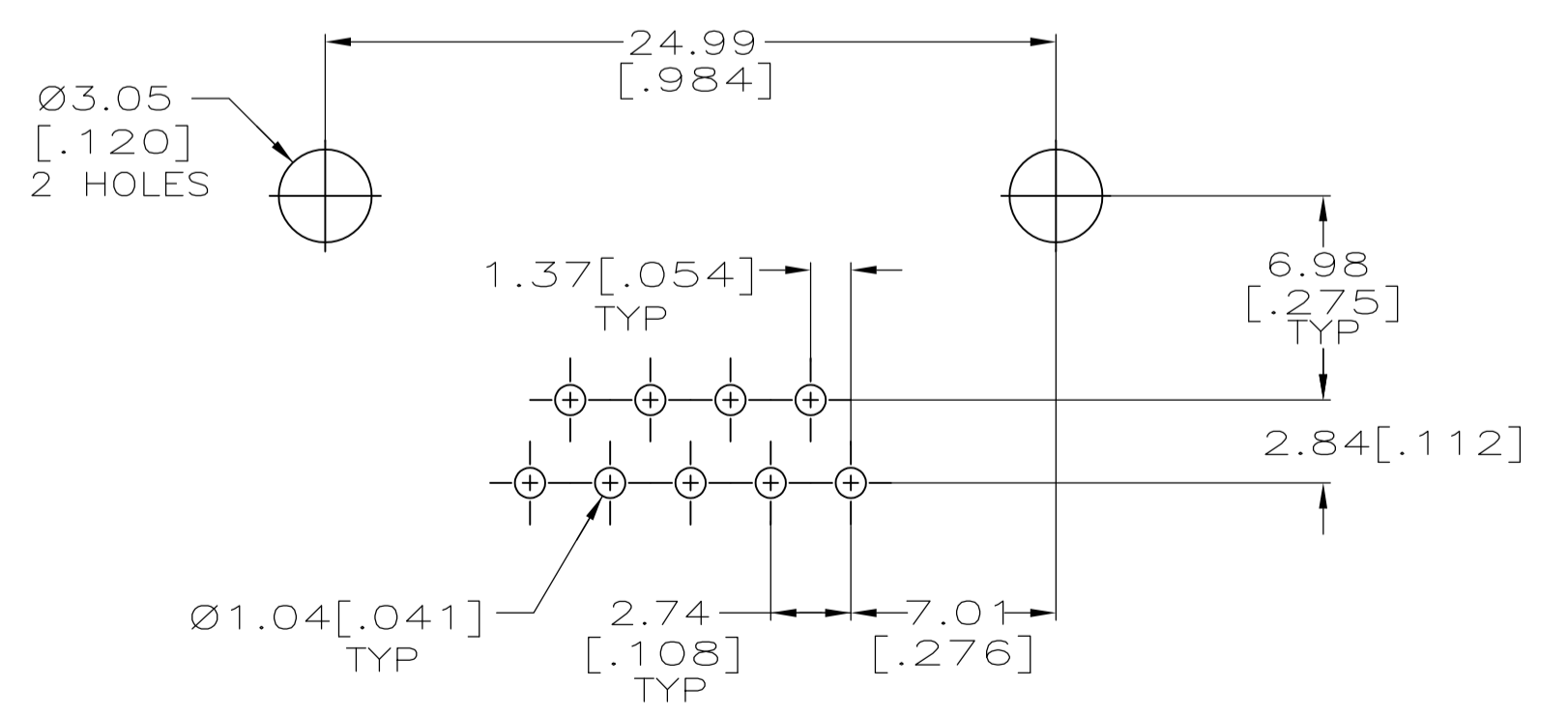
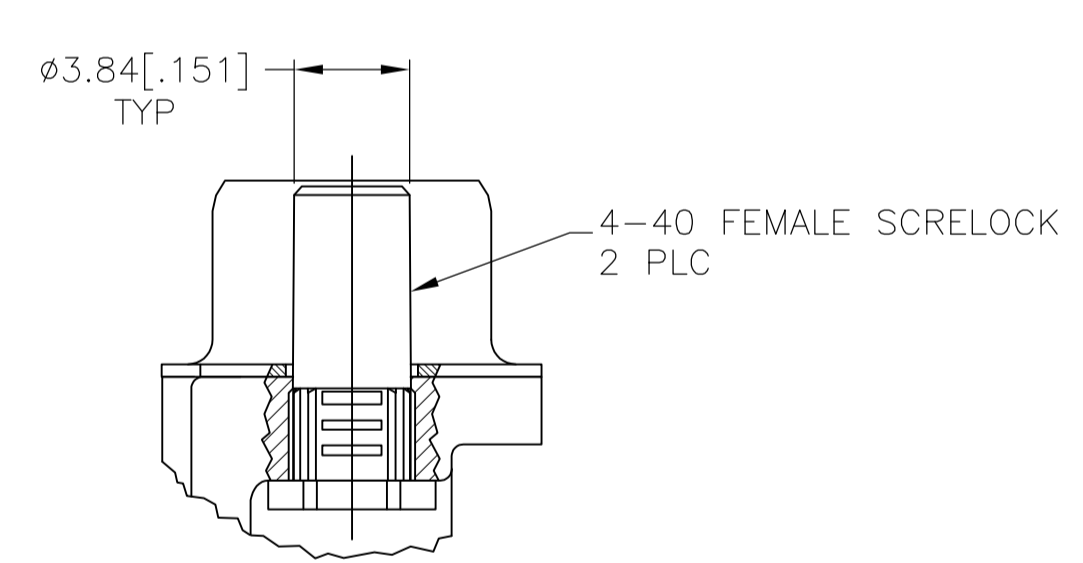
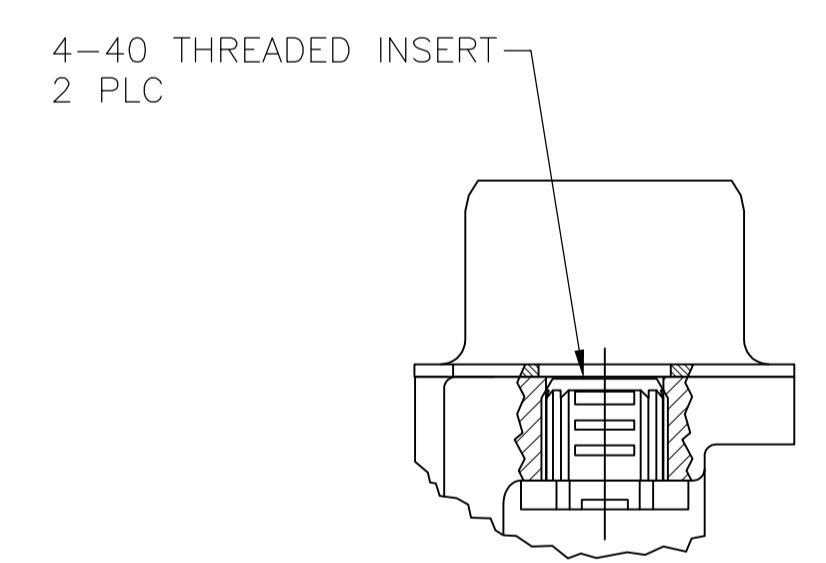
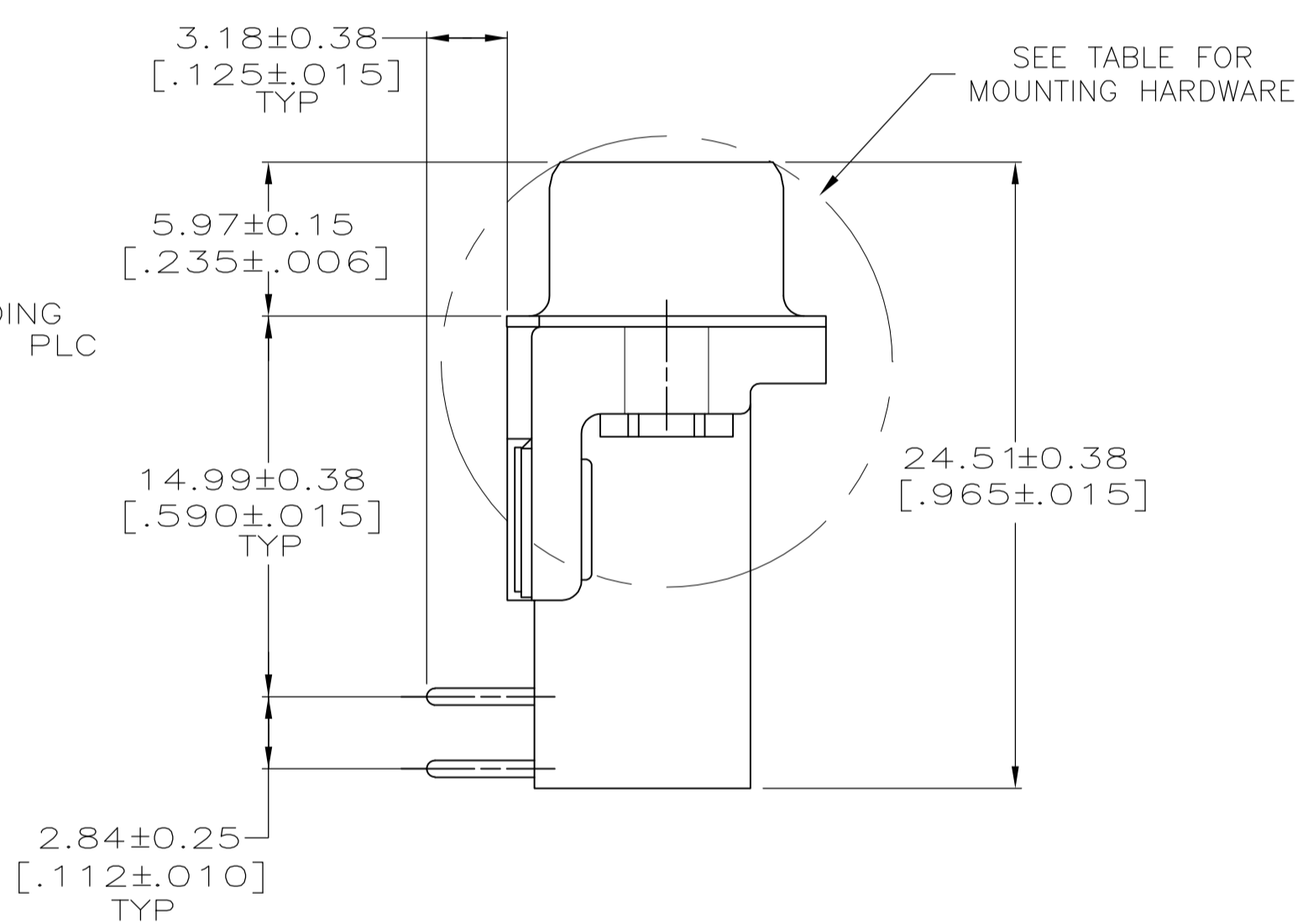
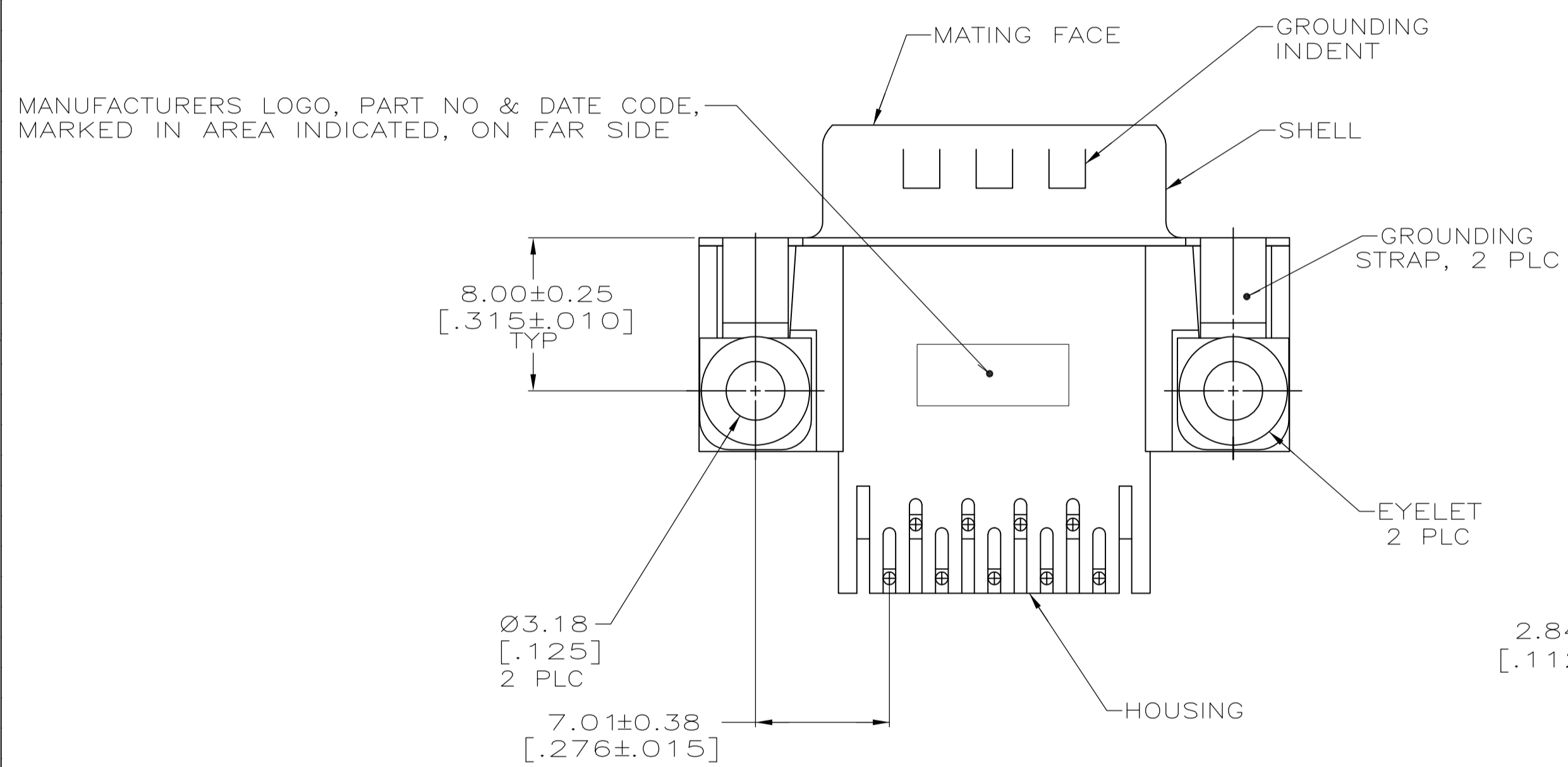


- 1 HOUSING: NYLON OR POLYESTER, FLAME RETARDANT, UL 94V-0 RATED, GLASS FILLED, BLACK, CONTACTS: BRASS, SHELL: CARBON STEEL, EYELETS: BRASS, INSERTS & SCREWLOCKS: ZINC
- 2 SHELL: 2.54µm [.000100] MIN TIN OVER 1.27µm [.000050] MIN COPPER. EYELETS: 2.54µm [.000100] MIN TIN OVER COPPER FLASH. INSERTS & SCREWLOCKS: CLEAR CHROMATE, CONTACTS: SEE TABLE
- 3 GOLD FLASH ON THE MATING SURFACES, 2.54µm (.000100) MIN TIN PLATE ON THE SOLDER END, 1.27µm (.000050) MIN NICKEL UNDERPLATE ON THE ENTIRE CONTACT.
- 4 0.76µm (.000030) MIN GOLD PLATE ON THE MATING SURFACES, 2.54µm (.000100) MIN TIN PLATE ON THE SOLDER END, 1.27µm (.000050) MIN NICKEL UNDERPLATE ON THE ENTIRE CONTACT -OR- GOLD FLASH OVER PALLADIUM-NICKEL PLATE, 0.76µm (.000030) MIN TOTAL ON THE MATING SURFACES, 2.54µm (.000100) MIN TIN PLATE ON THE SOLDER END, 1.27µm (.000050) MIN NICKEL UNDERPLATE ON THE ENTIRE CONTACT.



FOR -6 ONLY
DETAIL F
2 PLC

SEE DETAIL E	△	5745990-6
SEE DETAIL D	△	5745990-4
SEE DETAIL D	△	5745990-3
MOUNTING HARDWARE	△	PART NUMBER

THIS DRAWING IS A CONTROLLED DOCUMENT. DIMENSIONING AND TOLERANCING PER ASME Y14.5M-2009		DIN A. FERNANDEZ-DUCKS 04-08-05	APVD S. BOLASH 04-08-05	NAME M. WALMSLEY	RESTRICTED TO
DIMENSIONS: mm [INCHES]	TOLERANCES UNLESS OTHERWISE SPECIFIED:	PRODUCT SPEC 108-40025		SIZE 114-40010	WEIGHT
0 PLC ± -	1 PLC ± -	APPLICATION SPEC		SCALE 1:1	SHEET 1 OF 1
2 PLC ± 0.13 [.005]	3 PLC ± -	DRAWING NO 000779		REV D	
4 PLC ± -	ANGLES ± 2°	CUSTOMER DRAWING			



PLUG ASSEMBLY, SIZE 1, 9 POSITION, RIGHT ANGLE, FRONT METAL SHELL, .590 SERIES, AMPLIMITE HD-20

单击下面可查看定价，库存，交付和生命周期等信息

[>>TE Connectivity\(泰科\)](#)