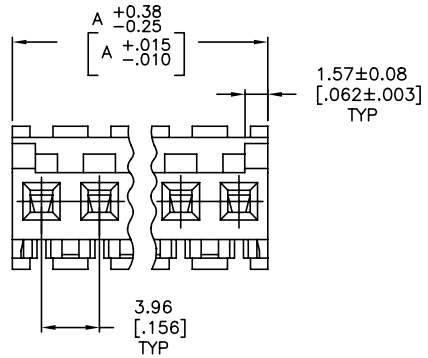
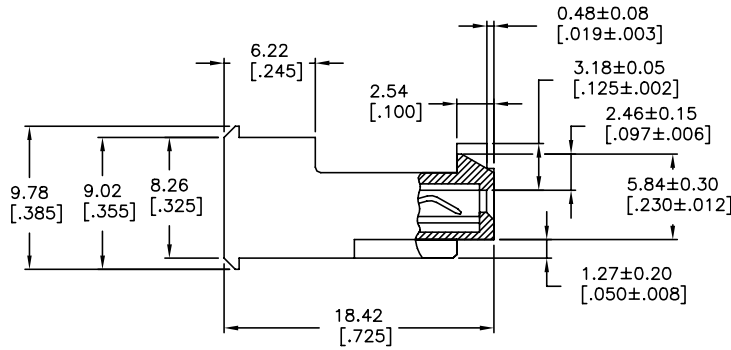
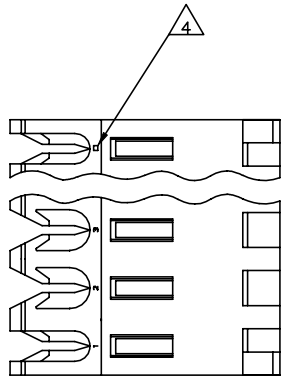


THIS DRAWING IS UNPUBLISHED. RELEASED FOR PUBLICATION
 © COPYRIGHT - TE Connectivity Ltd. ALL RIGHTS RESERVED.

REVISIONS					
P	LTN	DESCRIPTION	DATE	DWN	APVD
E		REVISED PER ECR-20-000824	29MAY2020	PC	SW



1 MATERIAL: CONNECTOR - NYLON UL94V-2 (WHITE).
 CONTACTS - 0.30[.012] THICK COPPER ALLOY BRIGHT TIN-LEAD 0.00203[.000080] MIN THICK FOR CONTACTS 644468-2 THRU 1-644468-4 MATTE WHISKER MITIGATED TIN 0.00203[.000080] MIN THICKNESS OVER NICKEL UNDERPLATE FOR 3-644468-2 THRU 4-644468-4

- 2. CONTACTS ACCEPT 24 AWG WIRE WITH 2.41[.095] MAX INSULATION DIAMETER.
- 3. CONTACTS MUST ACCEPT 1.14±0.03[.045±.001] SQUARE POST AND REMAIN LOCKED IN POSITION.
- 4 IDENTIFICATION NUMBER FOR LAST CIRCUIT MAY NOT APPEAR ON ALL ASSEMBLIES.
- 5. DIMENSIONS IN BRACKETS ARE IN INCHES.
- 6. HOUSING FEATURES ARE: FEED-THRU WITH LOCKING RAMP AND POLARIZING TAB.

7 OBSOLETE PARTS: OBSOLETE CIS STREAMLINING PER D.RENAUD/D.SINISI
 8 OBSOLETE PARTS

55.47 [2.184]	14	4-644468-4
51.51 [2.028]	13	4-644468-3
47.55 [1.872]	12	4-644468-2
43.59 [1.716]	11	4-644468-1
39.62 [1.560]	10	4-644468-0
35.66 [1.404]	9	3-644468-9
31.70 [1.248]	8	3-644468-8
27.74 [1.092]	7	3-644468-7
23.77 [.936]	6	3-644468-6
19.81 [.780]	5	3-644468-5
15.85 [.624]	4	3-644468-4
11.89 [.468]	3	3-644468-3
7.92 [.312]	2	3-644468-2
55.47 [2.184]	14	4-644468-4
51.51 [2.028]	13	4-644468-3
47.55 [1.872]	12	4-644468-2
43.59 [1.716]	11	4-644468-1
39.62 [1.560]	10	4-644468-0
35.66 [1.404]	9	3-644468-9
31.70 [1.248]	8	3-644468-8
27.74 [1.092]	7	3-644468-7
23.77 [.936]	6	3-644468-6
19.81 [.780]	5	3-644468-5
15.85 [.624]	4	3-644468-4
11.89 [.468]	3	3-644468-3
7.92 [.312]	2	3-644468-2
	DIM A	NO. OF CIRCUITS
		PART NO

THIS DRAWING IS A CONTROLLED DOCUMENT. DWN: B. LEWIS 12 FEB 91
 CHK: R. SWING 12 FEB 91
 APVD: D. CLARK 20 FEB 91

TE Connectivity Ltd.

MTA-156 CONNECTOR ASSEMBLY, 24 AWG, STANDARD

SIZE: A2 CAGE CODE: 00779 DRAWING NO: 644468

CUSTOMER DRAWING SCALE: 4:1 SHEET: 1 OF 1 REV: E

单击下面可查看定价，库存，交付和生命周期等信息

[>>TE Connectivity\(泰科\)](#)