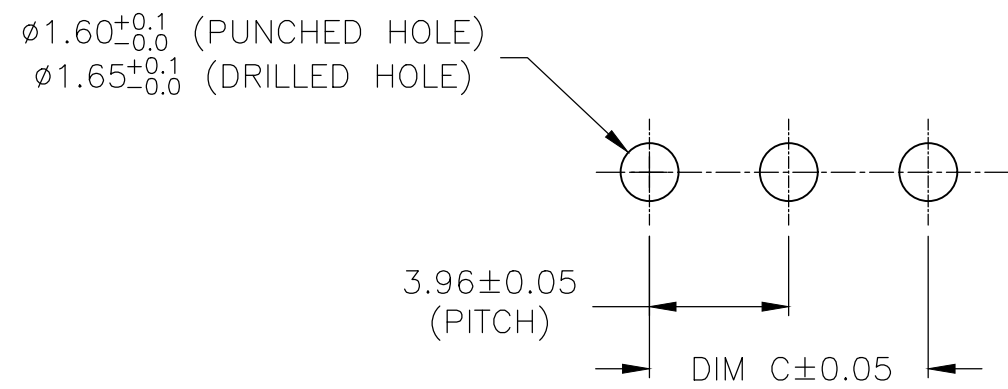
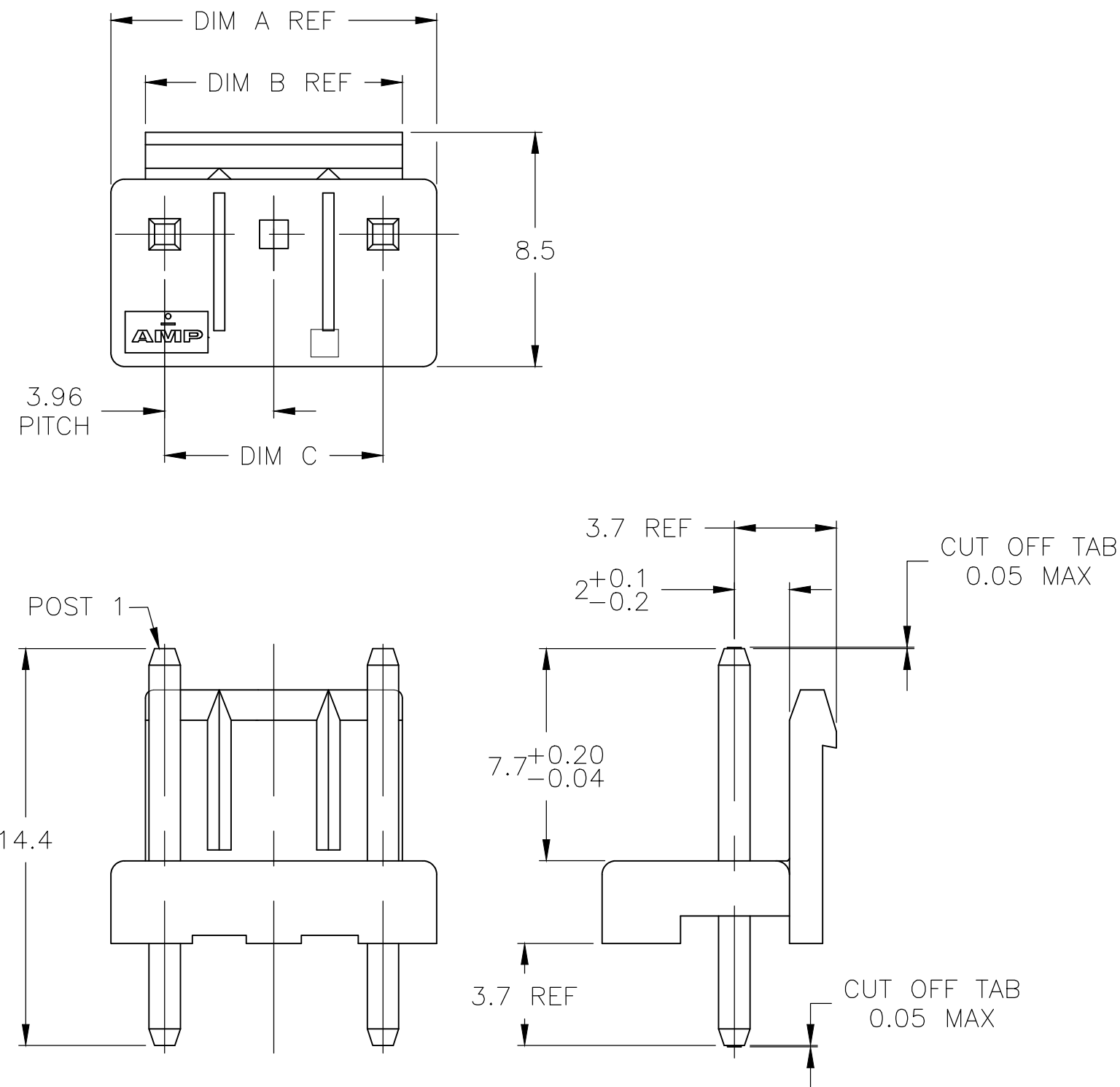


REVISIONS					
P	LTR	DESCRIPTION	DATE	DWN	APVD
C2		REVISED PER ECO-20-005520	20APR2020	WH	DZ



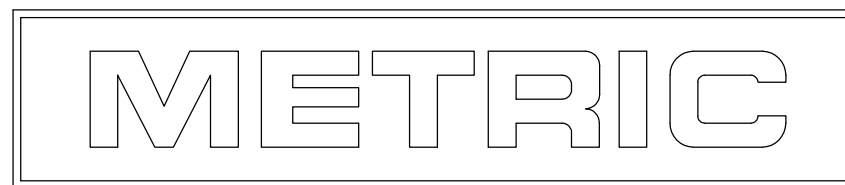
1 MATERIAL: HOUSING- PBT, 30% GLASS, UL94-V0, NATURAL
 POST-BRASS, 1MICROMETER MIN TIN OVER
 0.8 MICROMETER MIN NICKEL.

2. RECOMMENDED MATING PART: *-1123722-*

3 O : WITH PIN,
 X : WITHOUT PIN.

4 PRELIMINARY PART - NOT RELEASED FOR PRODUCTION

4	4	0	0	3.96	5.36	7.86	COLOR	NO. OF POSITIONS	ASSEMBLY PART NO.
4	4	0	0	3.96	5.36	7.86	PINK	2	8-1744103-2
4	4	0	0	3.96	5.36	7.86	GRAY	2	7-1744103-2
4	4	0	0	3.96	5.36	7.86	GREEN	2	6-1744103-2
4	4	0	0	3.96	5.36	7.86	BLACK	2	5-1744103-2
4	4	0	0	3.96	5.36	7.86	RED	2	4-1744103-2
4	4	0	0	3.96	5.36	7.86	BLUE	2	3-1744103-2
4	4	0	0	3.96	5.36	7.86	YELLOW	2	2-1744103-2
4	4	0	0	3.96	5.36	7.86	NATURAL	2	1744103-2
4	4	0	0	7.92	9.32	11.82	PINK	3	8-1744103-3
4	4	0	0	7.92	9.32	11.82	GRAY	3	7-1744103-3
4	4	0	0	7.92	9.32	11.82	GREEN	3	6-1744103-3
4	4	0	0	7.92	9.32	11.82	BLACK	3	5-1744103-3
4	4	0	0	7.92	9.32	11.82	RED	3	4-1744103-3
4	4	0	0	7.92	9.32	11.82	BLUE	3	3-1744103-3
4	4	0	0	7.92	9.32	11.82	YELLOW	3	2-1744103-3
4	4	0	0	7.92	9.32	11.82	NATURAL	3	1744103-3
4	4	0	X	7.92	9.32	11.82	PINK	3	8-1744103-1
4	4	0	X	7.92	9.32	11.82	GRAY	3	7-1744103-1
4	4	0	X	7.92	9.32	11.82	GREEN	3	6-1744103-1
4	4	0	X	7.92	9.32	11.82	BLACK	3	5-1744103-1
4	4	0	X	7.92	9.32	11.82	RED	3	4-1744103-1
4	4	0	X	7.92	9.32	11.82	BLUE	3	3-1744103-1
4	4	0	X	7.92	9.32	11.82	YELLOW	3	2-1744103-1
4	4	0	X	7.92	9.32	11.82	NATURAL	3	1744103-1
3	1	2	3	DIM C	DIM B	DIM A	COLOR	NO. OF POSITIONS	ASSEMBLY PART NO.



THIS DRAWING IS A CONTROLLED DOCUMENT.

DWN: K. WHITAKER 03JUN04
 CHK: D. BOSSI 03JUN04
 APVD: D. BOSSI 03JUN04

DIMENSIONS: mm
 TOLERANCES UNLESS OTHERWISE SPECIFIED:
 0 PLC ± -
 1 PLC ± 0.5
 2 PLC ± 0.30
 3 PLC ± -
 4 PLC ± -
 ANGLES ± -

MATERIAL: 1
 FINISH: 1

NAME: D. BOSSI
 PRODUCT SPEC: 108-5609
 APPLICATION SPEC: 114-32134

WEIGHT: -

CUSTOMER DRAWING

TE Connectivity
 HEADER ASSEMBLY, SPECIAL,
 OMITTED POST, 3 POSITION,
 ECONOMY POWER (EP)

SIZE: A2
 CAGE CODE: N/A
 DRAWING NO: 1744103
 RESTRICTED TO: -

SCALE: N/A
 SHEET: 1 of 1
 REV: C2

单击下面可查看定价，库存，交付和生命周期等信息

[>>TE Connectivity\(泰科\)](#)