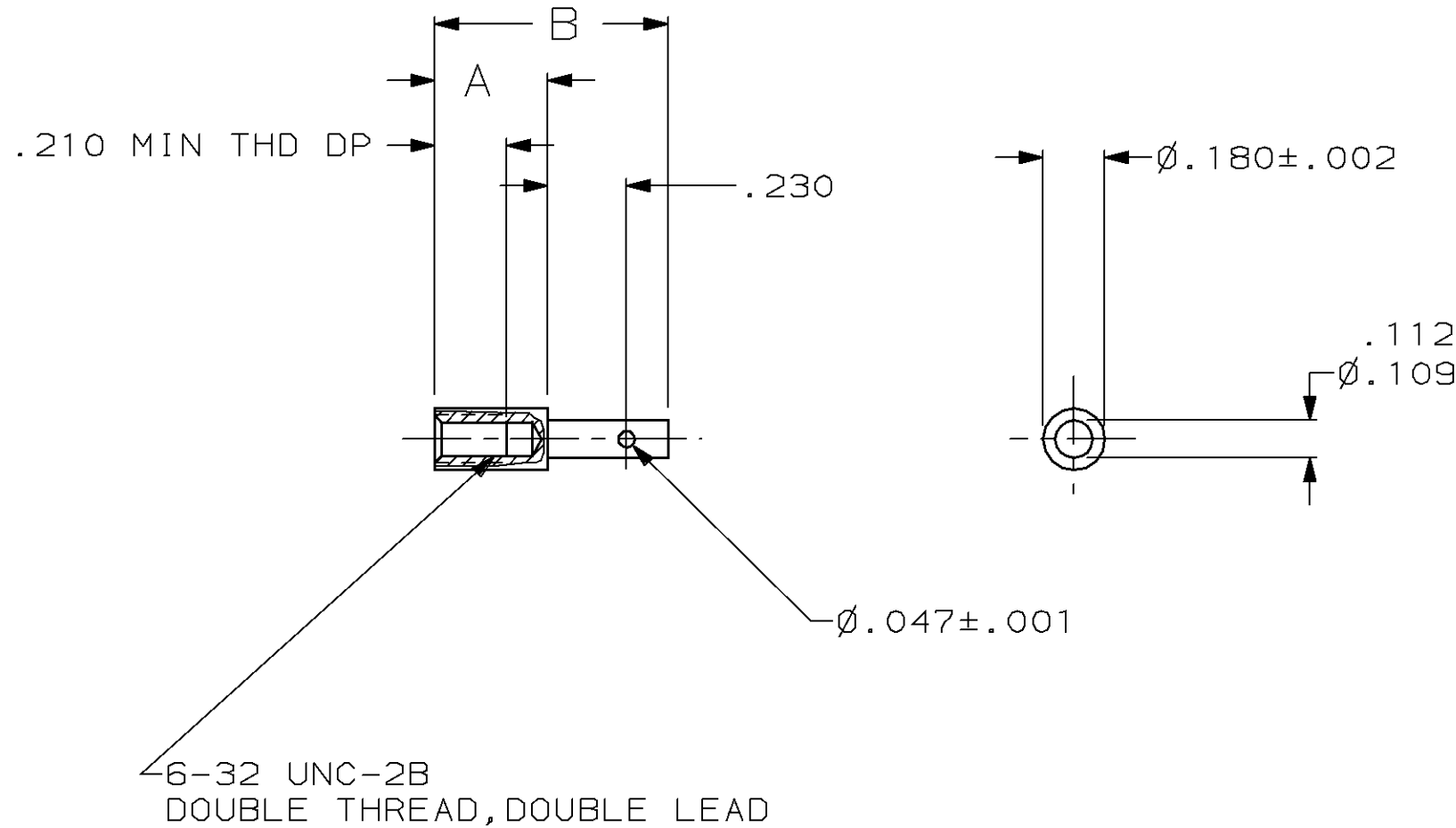


THIS DRAWING IS UNPUBLISHED. RELEASED FOR PUBLICATION, 19
 © COPYRIGHT 19 BY AMP INCORPORATED. ALL INTERNATIONAL RIGHTS RESERVED.

LOC	DIST	P	F	REVISIONS				
				ZONE	LTR	DESCRIPTION	DATE	APPD
AR	39			0		RELEASED TO CUST AR2290	1-89	-
				A		SUPSD -2 PER EC 0020-542-94	12/21/94	GM



OBSOLETE	.772	.420	4	2	86939-6
	.682	.330	3	1	86939-3
SUPSD BY 86939-3	.682	.330	4	2	86939-2
	B	A	FINISH	MATERIAL	PART NO.

- 1 STAINLESS STEEL
- 2 CARBON STEEL
- 3 PASSIVATED
- 4 ZINC PLATED PER QQ-Z-325, CLASS 3, TYPE II

DO NOT SCALE PRINT. UNLESS SPECIFIED DIMENSIONS IN INCHES. TOLERANCES ON: 2 PLC DEC ± - 3 PLC DEC ± .005 ANGLES ± -		DR 1-30-89 C. OBERMAN	AMP INCORPORATED Harrisburg, Pa. 17105	
MATERIAL SEE TABLE		CHK 2-15-89 G.D. MILLER		
FINISH SEE TABLE		APPD 2-15-89 G.D. MILLER	NAME TIP, JACKSCREW, FEMALE, TURNABLE	
		APPD 2-15-89 W. PARKER	SIZE B	FSCM NO 00779
		PRODUCT SPEC -	DRAWING NO 86939	
		APPLICATION SPEC -	SCALE 2:1	SHEET 1 OF 1
		WEIGHT -		

单击下面可查看定价，库存，交付和生命周期等信息

[>>TE Connectivity\(泰科\)](#)